



**PIDG**

TE Internal #: 696426-1

Splices, Butt Splice, 24 - 20 AWG Wire Size, .2 - .6 mm<sup>2</sup> Wire Size, Serrated, .043 in [1.09 mm] Barrel Inside Diameter, 320 - 1290 CMA Wire Size, PIDG

[View on TE.com >](#)

Terminals & Splices > Splices



Splice Type: **Butt Splice**

Wire Size: **.2 - .6 mm<sup>2</sup>**

Sealable: **No**

Splice Features: **Serrated**

**Features**

**Product Type Features**

Splice Accessory Type	Splice
Splice Type	Butt Splice
Sealable	No
Compatible With Discrete Wire Type	Stranded
Wire Insulation Support Retention Type	Insulation Support

**Configuration Features**

Number of Serrations	8
Compatible With Wire & Cable Type	Discrete Wire

**Body Features**

Insulation Type	Pre-Insulated
Insulation Support Sleeve Material	Copper
Stripe Color	White
Insulation Material	PVF2
Splice Features	Serrated



### Contact Features

Terminal Plating Material	Tin
Contact Base Material	Copper
Barrel Type	Closed

### Termination Features

Termination Method to Wire & Cable	Crimp
------------------------------------	-------

### Mechanical Attachment

Wire Insulation Support	With
-------------------------	------

### Dimensions

Wire Size	320 - 1290 CMA
Compatible Insulation Diameter Range	2.54 mm[.04 - .1 in]
Barrel Inside Diameter	1.09 mm[.043 in]
Product Length	26.29 mm[1.035 in]

### Usage Conditions

Insulation Option	Fully Insulated
Operating Temperature Range	150 °C[302 °F]

### Industry Standards

Government Qualified Splice	No
-----------------------------	----

### Packaging Features

Packaging Quantity	1000
Packaging Method	Loose Piece

### Product Compliance

[For compliance documentation, visit the product page on TE.com>](#)

EU RoHS Directive 2011/65/EU	Compliant
EU ELV Directive 2000/53/EC	Compliant
China RoHS 2 Directive MIIT Order No 32, 2016	No Restricted Materials Above Threshold
EU REACH Regulation (EC) No. 1907/2006	Current ECHA Candidate List: JAN 2024 (240) Candidate List Declared Against: JAN 2024 (240) Does not contain REACH SVHC
Halogen Content	Not Low Halogen - contains Br or Cl > 900 ppm.

Solder Process Capability

Not applicable for solder process capability

Product Compliance Disclaimer

This information is provided based on reasonable inquiry of our suppliers and represents our current actual knowledge based on the information they provided. This information is subject to change. The part numbers that TE has identified as EU RoHS compliant have a maximum concentration of 0.1% by weight in homogenous materials for lead, hexavalent chromium, mercury, PBB, PBDE, DBP, BBP, DEHP, DIBP, and 0.01% for cadmium, or qualify for an exemption to these limits as defined in the Annexes of Directive 2011/65/EU (RoHS2). Finished electrical and electronic equipment products will be CE marked as required by Directive 2011/65/EU. Components may not be CE marked. Additionally, the part numbers that TE has identified as EU ELV compliant have a maximum concentration of 0.1% by weight in homogenous materials for lead, hexavalent chromium, and mercury, and 0.01% for cadmium, or qualify for an exemption to these limits as defined in the Annexes of Directive 2000/53/EC (ELV). Regarding the REACH Regulation, the information TE provides on SVHC in articles for this part number is based on the latest European Chemicals Agency (ECHA) 'Guidance on requirements for substances in articles' posted at this URL: <https://echa.europa.eu/guidance-documents/guidance-on-reach>

## Compatible Parts



REPRESENTATION ONLY

TE Part # 47907-1  
DAHT PIDG 24-20 ASSY

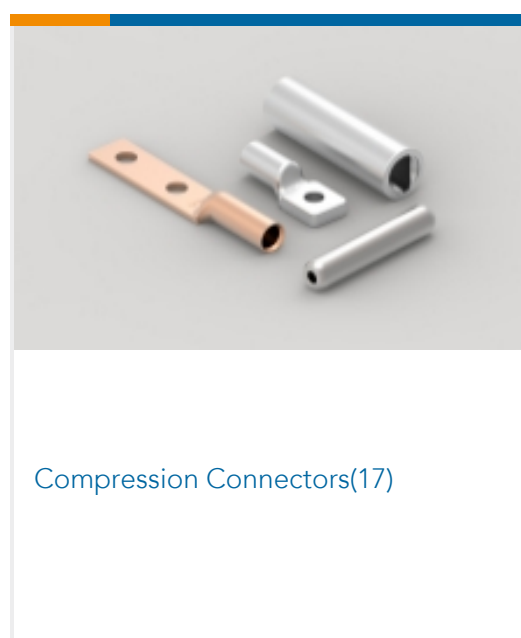


TE Part # 59275  
T-HEAD PIDG PG SH 26-20 ASSY



TE Part # 59300  
T-HEAD PIDG PG 26-16 ASSY

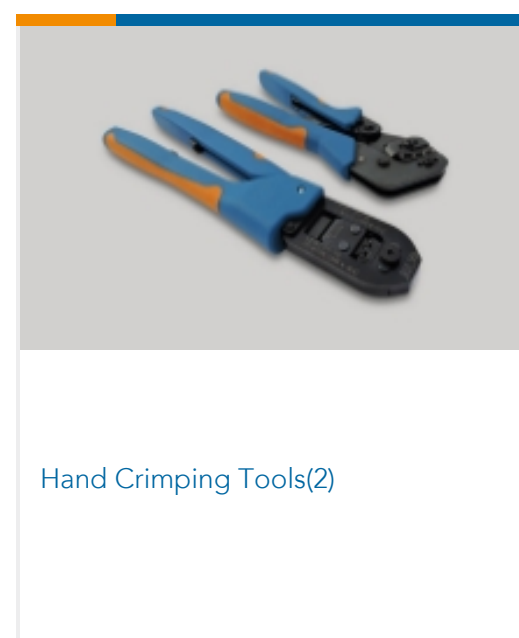
## Also in the Series | PIDG



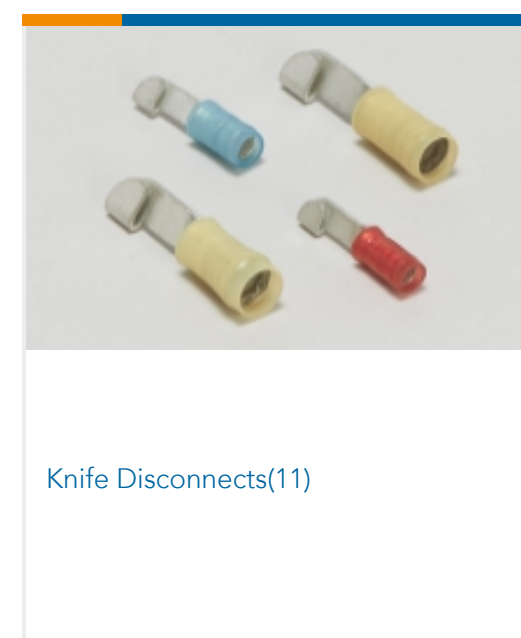
Compression Connectors(17)



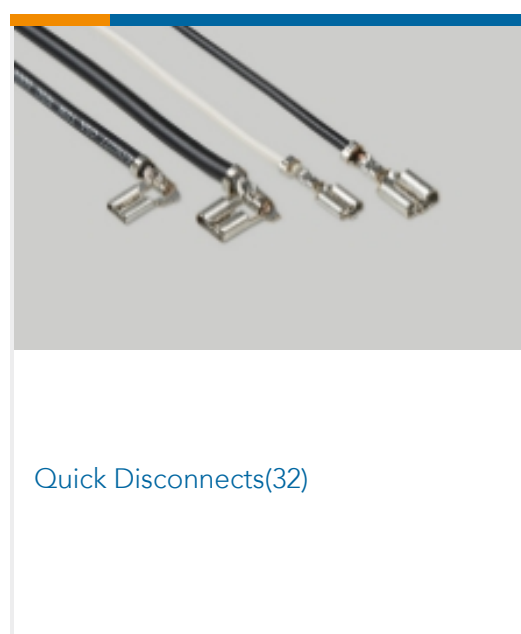
Crimp Wire Pins, Tabs & Ferrules(41)



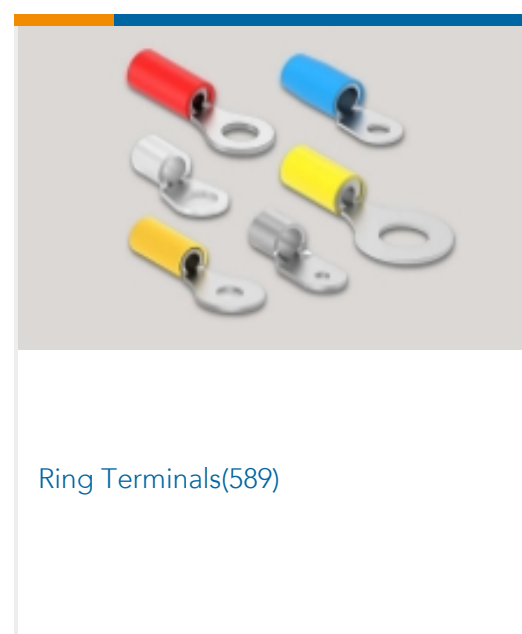
Hand Crimping Tools(2)



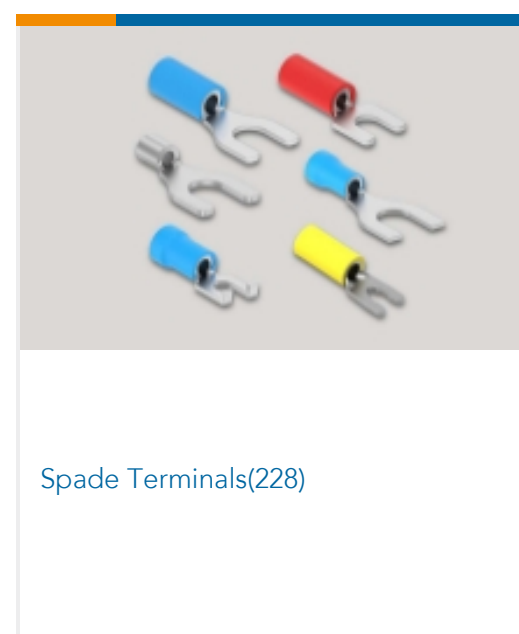
Knife Disconnects(11)



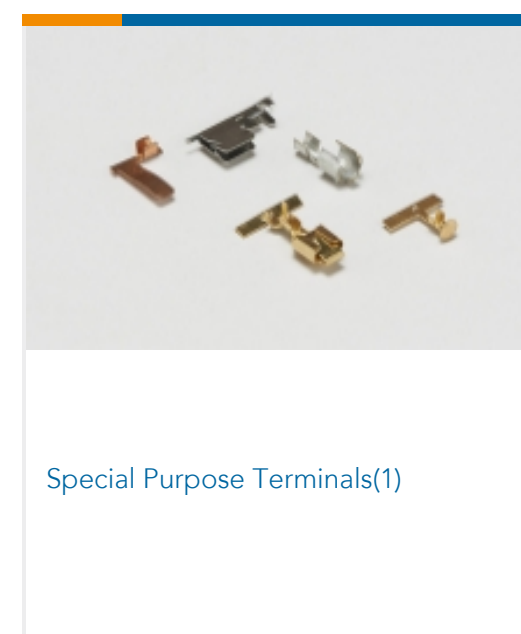
Quick Disconnects(32)



Ring Terminals(589)



Spade Terminals(228)



Special Purpose Terminals(1)



Splices(40)

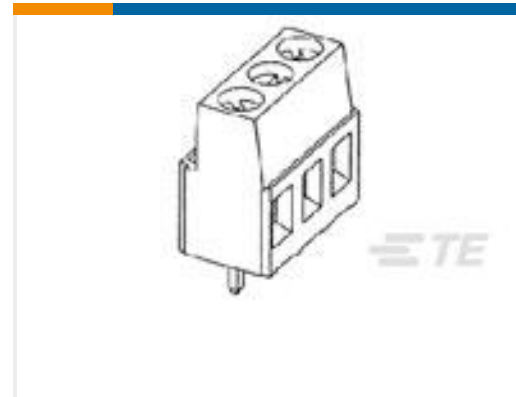
## Customers Also Bought



TE Part # 66104-8  
Strip Pin and Socket Contacts, Type III



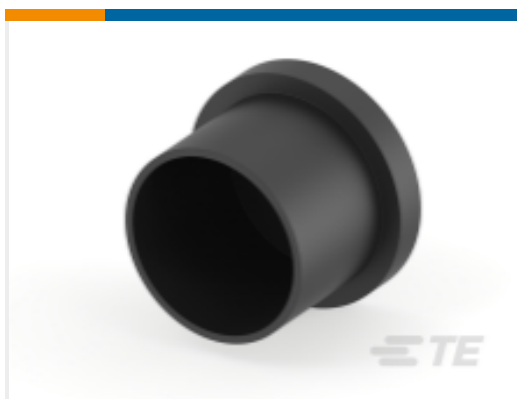
TE Part # 8-323994-3  
PIDG Butt Splices



TE Part # 1-282843-0  
TERMI-BLOK PCB MOUNT 90 10P.



TE Part # HPP805A031  
HM1500LF HUMIDITY MODULE



TE Part # 1-2407269-2  
CAP, CPC, SIZE 11 RECP & 13 PLUG,  
BLACK



TE Part # 2336600-2  
ACTUATOR,TYPE 2, SPARE PART  
PACK



TE Part # US331-000005-015PA  
PRESS XDCR US331-000005-015PA

## Documents

### Product Drawings

[SPLICE BUTT PVF2 PIDG 24-20](#)

English

### CAD Files

[3D PDF](#)

3D

Customer View Model

[ENG\\_CVM\\_CVM\\_696426-1\\_A.2d\\_dxf.zip](#)

English

Customer View Model

[ENG\\_CVM\\_CVM\\_696426-1\\_A.3d\\_igs.zip](#)

English

Customer View Model

[ENG\\_CVM\\_CVM\\_696426-1\\_A.3d\\_stp.zip](#)

English

By downloading the CAD file I accept and agree to the [Terms and Conditions](#) of use.



---

**Datasheets & Catalog Pages**

**RADIATION\_RESISTANT\_PRE-INSULATED\_TERMINALS\_SPLICES**

English