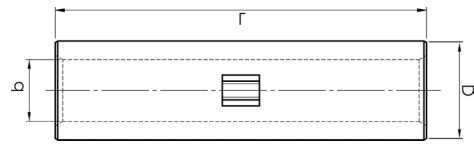




# ELPRESS®

## Product Datasheet

### KS/KSF through connectors 0.75 - 800 mm<sup>2</sup>



mm <sup>2</sup> (Cu)	AWG Cu	Name	Screen conductor	d (mm)	D	L	s	Die	Pcs/pack	Tool
0,75	(22)-18	KS0,75		1,3	2,8	14	7		100	DKB0325, DKB0760
1,5	(18)-16	KS1,5		1,8	3,3	14	7		100	DKB0325, DKB0760
2,5	(16)-14	KS2,5		2,3	4,2	16	8		100	DKB0325, DKB0760
4	12	KS4		3	5	19	9		100	GWB4099, ES2258
6	10	KS6		4	6	19	9		100	GWB4099, ES2258
10	8	KS10		5	8	30	15	8	100	GWB4099, ES2258, PVL350, V600, DV1300
16	6	KSF16	15	6	9	35	17	9	100	ES2258, PVL350, V600, DV1300
25	4	KSF25	21-29	8	11	35	17	11	100	ES2258, PVL350, V600, DV1300
35	2	KSF35	41	9	13	35	17	13	100	PVL350, V600, DV1300, DV250
50	1/0	KSF50	57	11	14,5	45	22	14,5	50	V600, DV1300, DV250
70	2/0	KSF70	72-88	13	17	45	22	17	50	V600, DV1300, DV250
95	3/0	KSF95	111	15	20	45	25	20	50	V600, DV1300, DV250
120	4/0	KSF120		17	22	55	27	22	50	V600, DV1300, DV250
150	300	KSF150		19	25	65	32	25	25	V600, DV1300, DV250
185	350	KSF185		21	27	70	35	27	25	DV1300, DV250
240	450	KSF240A		22,5	29	70	35	30	25	DV1300, DV250
300	550	KSF300A		24,5	31,5	75	37	32	10	DV1300, DV250
400	750	KSF400A		30	38	100	50	38	10	DV1300, DV250
500	950	KSF500		33	42	135	68	42	5	DV250, V1470
630	1250	KSF630		39	53	175	88	53	3	DV250, V1470
800	1500	KSF800		42,5	53	175	88	53	2	DV250, V1470

s = strip length



# ELPRESS®