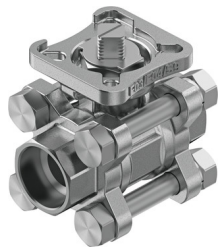



Ball valve
VZBE-1/2-WA-63-T-2-F0304-V15V15
 Part number: 8089040

FESTO



Data sheet

 [General operating condition](#)

Feature	Value
Structural design	2-way ball valve
Actuation type	Mechanical
Sealing principle	Soft
Mounting position	Any
Type of mounting	Line installation
Fitting connection	Weld-on end according to ASME B16.11
Switching position indication	Slot direction = flow direction
Flange hole pattern	F03 F04
Inside diameter	15 mm
Nominal width DN	15
Valve function	2/2

Feature	Value
Flow direction	Reversible
Nominal pressure of fitting PN	63
Breakaway torque at differential pressure, nominal pressure, fitting PN	7 Nm
Based on norm	ASME B16.11 ISO 5211
Symbol	00991458
Medium	Vapor Compressed air as per ISO 8573-1:2010 [:-:-] Inert gas Water Neutral liquids
Temperature of medium	-20 °C ... 200 °C
Flow rate Kv	32 m³/h
Note on materials	RoHS-compliant
LABS (PWIS) conformity	VDMA24364 zone III
Housing material	Cast stainless steel
Material number of housing	1.4408/CF8M
Seat seal material	PTFE, modified
Seals material	FPM PTFE
Ball material	Cast stainless steel
Material number for ball	1.4408/CF8M
Shaft material	High-alloy stainless steel
Material number for shaft	1.4401
Product weight	500 g
Certification	CRN
Explosion prevention and protection	Zone 1 (ATEX) Zone 2 (ATEX) Zone 21 (ATEX) Zone 22 (ATEX)
Corrosion resistance class (CRC)	4 - Particularly high corrosion stress