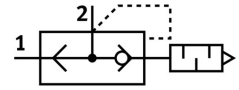


Quick exhaust valve SEU-1/4

Part number: 6753

FESTO



[PDF](#) General operating condition

Data sheet

| Feature | Value |
|---|--|
| Valve function | Quick exhaust |
| Selection of additional function | with muffler |
| Pneumatic connection 1 | G1/4 |
| Pneumatic connection 2 | G1/4 |
| Type of mounting | Screw-in |
| Standard nominal flow rate exhaust air 6→5 bar | 1100 l/min |
| Standard flow rate exhaust 6→0 bar | 2300 l/min |
| Standard nominal flow rate pressurization 6→5 bar | 960 l/min |
| Operating pressure | 0.5 bar ... 10 bar |
| Ambient temperature | -20 °C ... 75 °C |
| Housing material | Die-cast zinc |
| Operating medium | Compressed air as per ISO 8573-1:2010 [7:-:-] |
| Nominal width | 7 mm |
| Mounting position | Any |
| Symbol | 00991460 |
| Information on operating and pilot media | Operation with oil lubrication possible (required for further use) |
| LABS (PWIS) conformity | VDMA24364-B1/B2-L |
| Temperature of medium | -20 °C ... 75 °C |
| Noise level | 95 dB(A) |
| Product weight | 120 g |
| Seals material | NBR |