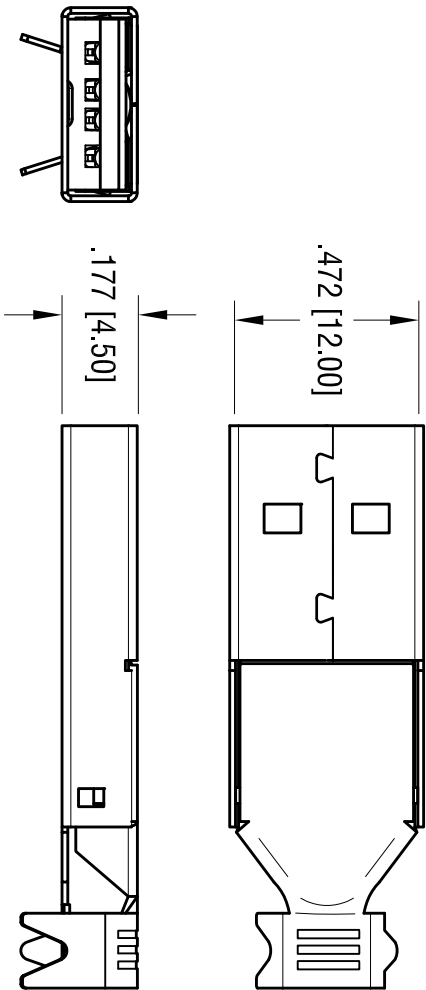


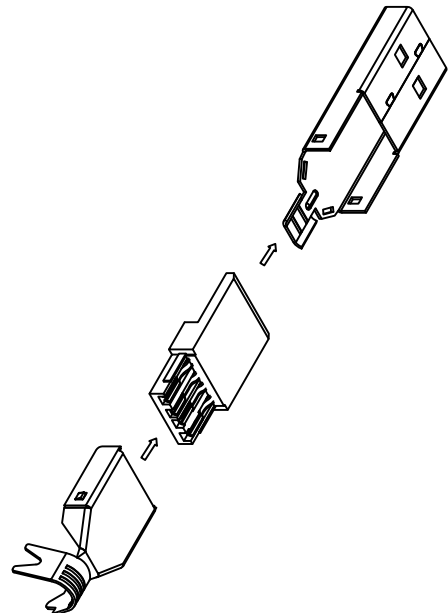
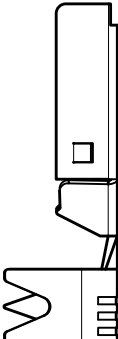
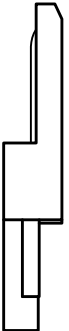
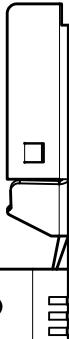
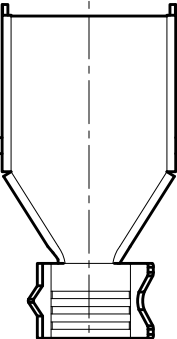
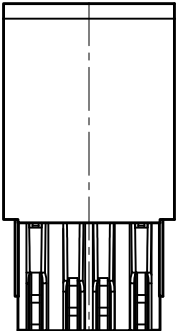
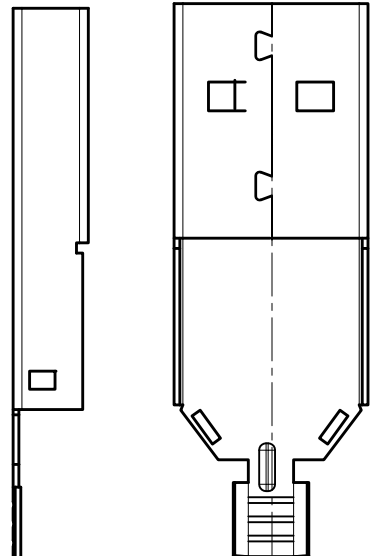
DATE	DESCRIPTION	REV.
4.14.00	CHANGE AS PER ECN 00-024	C
6.8.05	CHANGE AS PER ECN 056-035	D
6.30.08	CHANGE AS PER ECN 08-116	E
12.17.09	CHANGE AS PER ECN 09-191	F
12.21.12	CHANGE AS PER ECN 12-162	G
12.14.17	CHANGE AS PER ECN 17-076	H
7.07.20	CHANGE AS PER ECN 20-065	K
1.20.23	CHANGE AS PER ECN 23-006	L



FRONT SHELL

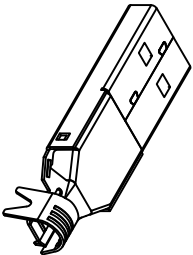
INSULATOR BODY

REAR SHELL



NOTE:

1. SHELL: MAT'L- STEEL
FINISH- NICKEL PLATE, OVER COPPER PLATE
2. INSULATOR: MAT'L- PBT
FINISH: CONTACT AREA- GOLD PLATE, OVER NICKEL
ON SOLDER TAIL- TIN PLATE, OVER NICKEL PLATE
3. CONTACT: MAT'L- BRONZE



ACTUAL SIZE

KEYSTONE ELECTRONICS CORP.			
www.keystco.com • NEW HYDE PARK, NY 11040 • Tel (516) 328-7500			
PART NAME			
USB A-TYPE PLUG			
MATERIAL			
AS NOTED			
FINISH			
AS NOTED			
TOLERANCES		INCH	[MM]
DECIMAL		± .010	[± 0.25]
ANGULAR		± 1°	
UNLESS OTHERWISE SPECIFIED			
DRN BY		BOONE	DATE
Appd		RH	6.18.98
DWG NO.			2X
CODE		C	
			925

THIS DOCUMENT IS THE PROPERTY OF
KEYSTONE ELECTRONICS CORP. AND
SHALL NOT BE REPRODUCED, DISTRIBUTED
OR USED AS A BASIS FOR MANUFACTURE
WITHOUT PRIOR WRITTEN PERMISSION
FROM KEYSTONE ELECTRONICS CORP.