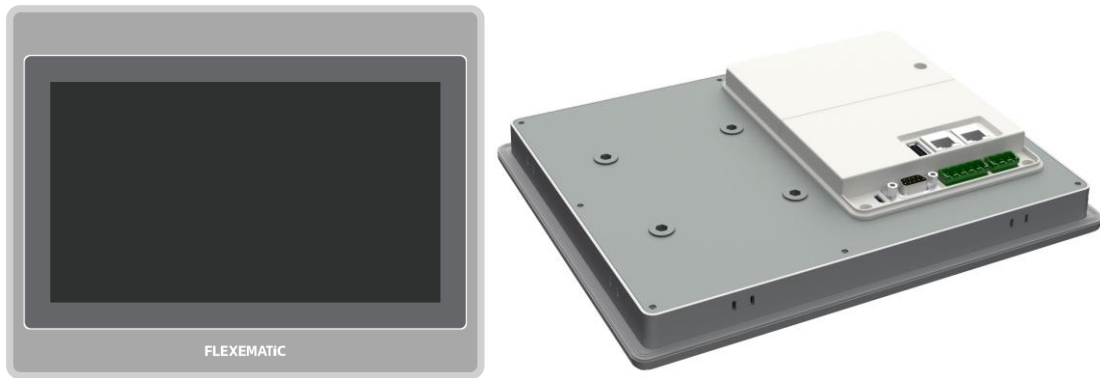


10.1” Industrial IOT HMI

FS910R



Product Overview

FS910R HMI is FLEXEMATIC's new generation Industrial IoT HMI with industrial ABS economic frame, the embedded installation buckle adopts an isolated power module and has lightning surge protection, lost cost and high reliability. The motherboard is treated with three anti paint treatments to adapt to harsh environments. Adopting a more practical backward threading method. Good-looking; There are high-resolution models available for selection.

Through selecting FWay IOT module to update to IOT HMI directly to enjoy complete FLEXEMATIC IOT cloud service.

Product Specifications

1. Hardware specification

Display diagonal	10.1"
Display Type	16:9 LCD TFT
Resolution	1024x600 pixels
Color range	65536
Brightness (cd/m ²)	400
Backlight	LED
Half Brightness Life Time (MTBF*1)	50000 hours
LCD viewing angle (T/B/L/R)	85'/85'/85'/85'
Touch Screen	4-wire Industrial Resistive Type
CPU	4-core 1.2G Cortex-A53
Random access memory	1GB DDR3
Internal flash memory	8GB FLASH
RTC	Built-in
Ethernet port	2*RJ45, based on 10/100/1000Mbps
SD Card	Support
USB Port	1 USB Slave 2.0 port 1 USB Host 2.0 port
Serial port	COM1: RS232/RS485/RS422 COM2:RS485/RS422 COM3:RS232
Download method	USB Slave Port / USB drive / Ethernet port

2. Electrical specification

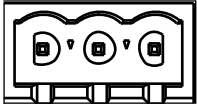
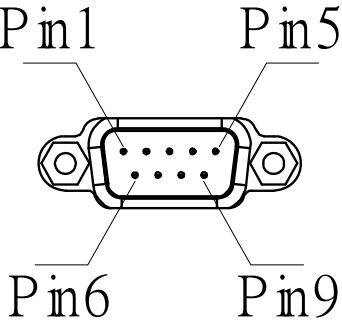
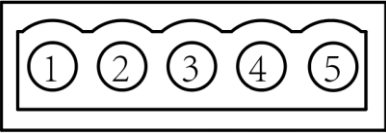


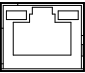
Rated Power	< 10W
Rated Voltage	DC24V
Permitted voltage range	+9VDC ~+28VDC
Power supply protection	With lightning surge protection
Allowable power-off time	< 5mS
Certification	CE, RoHS

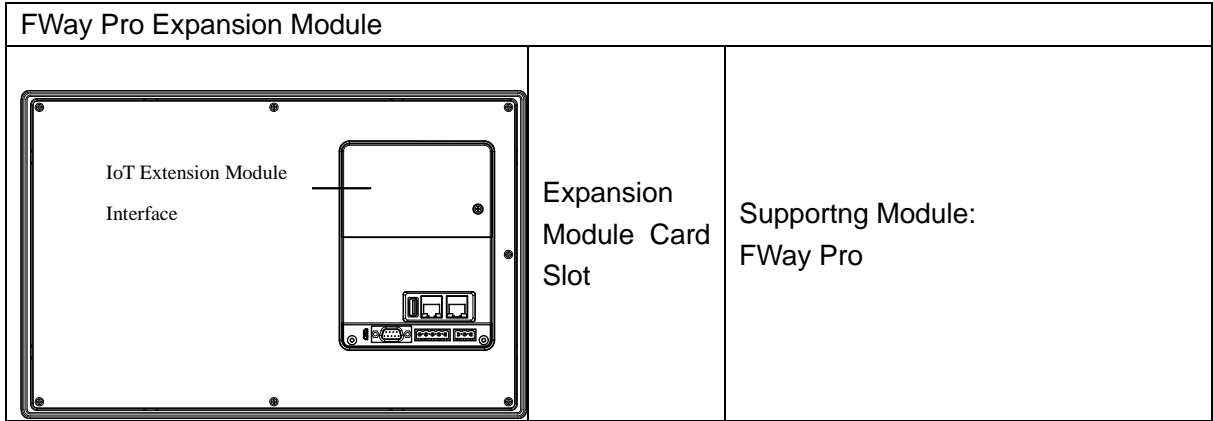
3. Environmental requirements

Environmental requirements	Working Temperature	-10~60℃
	Storage Temperature	-20~70℃
	Environment humidity	10~90%RH (Non condensate)
	Anti-vibration	10~25Hz (X, Y, Z direction 2G/30 minutes)
	Cooling method	Natural Cooling

Mechanical Parameters	Installation method	Panel mount / VESA installation
	Protection	Front: IP65 Rear: IP20
	Mechanical Structure	Aluminum Frame
	Panel Cutout	260mm×202mm
	Net Weight	About 1450g

Wiring Definition

Power Terminals (Pin1~3 from left to Right)		
	Pin1	DC24V
	Pin2	GND
	Pin3	FG
DB9 Serial ports (COM1/COM3)		
	Pin1	Rx-(B)
	Pin2	RxD (COM1 RS232)
	Pin3	TxD (COM1 RS232)
	Pin4	Tx-
	Pin5	GND
	Pin6	Rx+(A)
	Pin7	RxD (COM3 RS232)
	Pin8	TxD (COM3 RS232)
	Pin9	Tx+
COM2 Ports		
	Pin1	Rx+(A)
	Pin2	Rx-(B)
	Pin3	GND
	Pin4	Tx+
	Pin5	Tx-
USB Host		
	USB Type A	Used for connecting U-DISC, barcode scanner
USB Slave		
	Micro USB	Used For downloading programs and debugging
Ethernet Port		
	RJ45	Used for setting Ethernet with controller or connecting server.



Dimension drawings

