

MDE Semiconductor, Inc.

201 Shipyard Way, Unit C, Newport Beach, CA., USA 92663 Tel : 760-564-8656 • Fax : 760-564-2414
1-800-831-4881 Email: sales@mdesemiconductor.com Web: www.mdesemiconductor.com

MLCE SERIES

LOW CAPACITANCE TRANSIENT VOLTAGE SUPPRESSOR STAND-OFF VOLTAGE- 6.5 TO 28 Volts 1500 Watt Peak Pulse Power

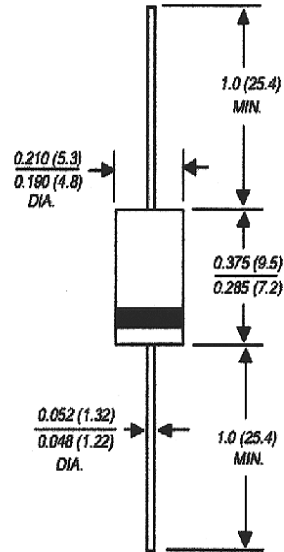
FEATURES

- Plastic package has Underwriters Laboratory Flammability Classification 94 V-O
- Glass passivated junction
- 1500W Peak Pulse Power capability on 10/1000 μ s waveform
- Glass passivated junction
- Low incremental surge resistance
- Excellent clamping capability
- Repetition rate (duty cycle): 0.05%
- Fast response time: typically less than 5.0 ns from 0 volts to V(BV)
- Ideal for data line applications
- High temperature soldering guaranteed: 265°C/10 seconds/ .375", (9.5mm) lead length, 5lbs., (2.3kg) tension

MECHANICAL DATA

Case: JEDEC DO-201 Molded plastic over glass passivated junction
Terminals: Solder plated axial leads, solderable per MIL-STD-750, Method 2026
Polarity: Color band denoted positive end (cathode) except Bipolar
Mounting Position: Any
Weight: 0.045 ounces, 1.2 grams

DO-201



Dimensions in inches and (millimeters)

MAXIMUM RATINGS AND CHARACTERISTICS

Ratings at 25°C ambient temperature unless otherwise specified.

RATING	SYMBOL	VALUE	UNITS
Peak Pulse Power Dissipation on 10/1000 μ s waveform (NOTE 1, Fig.1)	P_{PPM}	Minimum 1500	Watts
Peak Pulse Current of on 10/1000 μ s waveform (Note 1, Fig 3)	I_{PPM}	SEE TABLE 1	Amps
Steady State Power Dissipation at TL = 75°C Lead lengths .375", 9.5mm	$P_{M(AV)}$	5.0	Watts
Operatings and Storage Temperature Range	T_J, T_{STG}	-65 +175	°C

NOTES:

1. Non-repetitive current pulse, per Fig.3 and derated above Ta=25 °C per Fig.2.

Certified RoHS Compliant
UL File # E223026

MDE Semiconductor, Inc.

201 Shipyard Way, Unit C, Newport Beach, CA., USA 92663 Tel : 760-564-8656 • Fax : 760-564-2414
 1-800-831-4881 Email: sales@mdesemiconductor.com Web: www.mdesemiconductor.com

RATING AND CHARACTERISTIC CURVES MLCE6.5 THRU MLCE28A

Fig. 1 - Peak Pulse Power Rating Curve

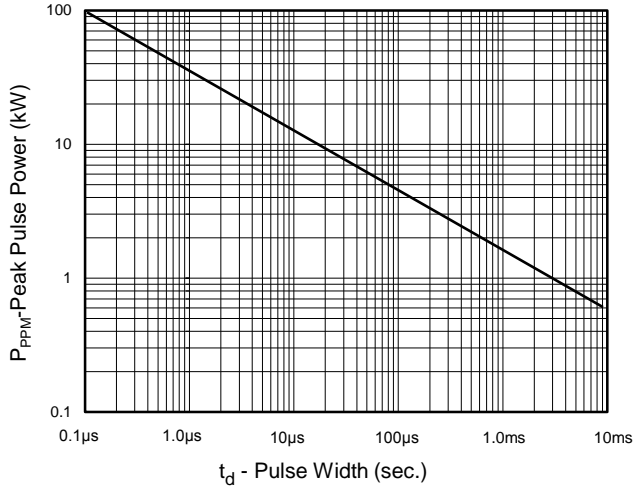


Fig.2-Power Derating Curve

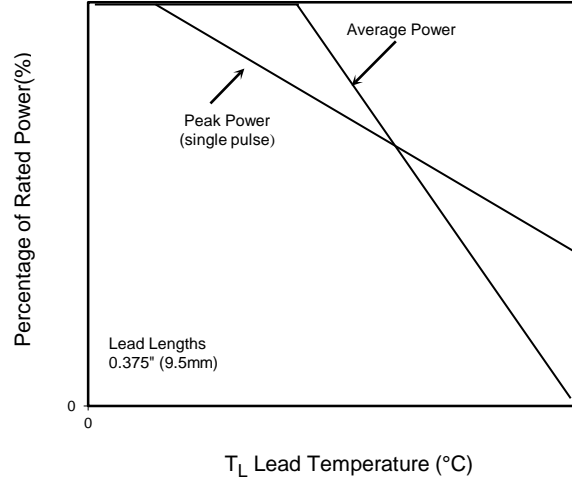


Fig.3 - Pulse Waveform

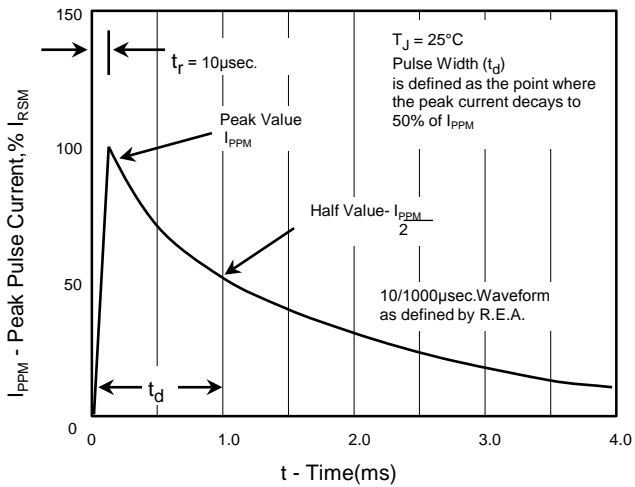
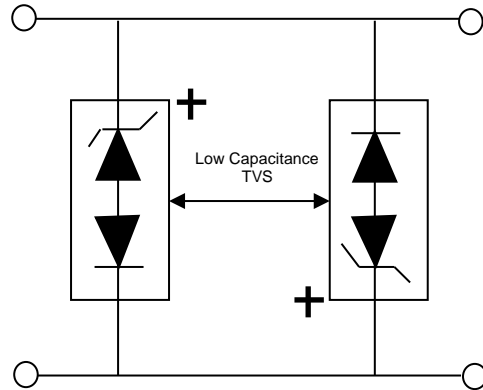


Fig. 4 - AC Line Protection Application



Application Note: Device must be used with two units in parallel, opposite in polarity as shown in circuit for AC signal line protection.

MDE Semiconductor, Inc.

201 Shipyard Way, Unit C, Newport Beach, CA., USA 92663 Tel : 760-564-8656 • Fax : 760-564-2414
1-800-831-4881 Email: sales@mdesemiconductor.com Web: www.mdesemiconductor.com

1500 Watt Low Capacitance TVS

PART NUMBER	STANDOFF VOLTAGE VWM (V)	BREAKDOWN VOLTAGE VBR (V) MIN./MAX. @ IT	MAXIMUM REVERSE LEAKAGE @ VWM ID(μA)	TEST CURRENT (It) mA	MAXIMUM CLAMPING VOLTAGE @Ipp Vc (V)	PEAK PULSE CURRENT IppM (A)	MAXIMUM JUNCTION CAPACITANCE @ 0 VOLTS (pF)	WORKING INVERSE BLOCKING VOLTAGE VWIB VOLTS	MAXIMUM INVERSE BLOCKING LEAKAGE CURRENT @ VWIB ID(mA)	MINIMUM PEAK INVERSE BLOCKING VOLTAGE VPIB VOLTS
MLCE6.5	6.50	7.22/8.82	1000	10	12.3	100.0	100	75	1	100
MLCE6.5A	6.50	7.22/7.98	1000	10	11.2	100.0	100	75	1	100
MLCE7.0	7.00	7.78/9.51	500	10	13.3	100.0	100	75	1	100
MLCE7.0A	7.00	7.78/8.6	500	10	12.0	100.0	100	75	1	100
MLCE7.5	7.50	8.33/10.2	250	10	14.3	100.0	100	75	1	100
MLCE7.5A	7.50	8.33/9.21	250	10	12.9	100.0	100	75	1	100
MLCE8.0	8.00	8.89/10.9	100	1	15.0	100.0	100	75	1	100
MLCE8.0A	8.00	8.89/9.83	100	1	13.6	100.0	100	75	1	100
MLCE8.5	8.50	9.44/11.5	50	1	15.9	94.0	100	75	1	100
MLCE8.5A	8.50	9.44/10.4	50	1	14.4	100.0	100	75	1	100
MLCE9.0	9.00	10/12.2	10	1	16.9	89.0	100	75	1	100
MLCE9.0A	9.00	10/11.1	10	1	15.4	97.0	100	75	1	100
MLCE10	10.00	11.1/13.6	5	1	18.8	80.0	100	75	1	100
MLCE10A	10.00	11.1/12.3	5	1	17.0	88.0	100	75	1	100
MLCE11	11.00	12.2/14.9	5	1	20.1	74.0	100	75	1	100
MLCE11A	11.00	12.2/13.5	5	1	18.2	82.0	100	75	1	100
MLCE12	12.00	13.3/16.3	5	1	22.0	68.0	100	75	1	100
MLCE12A	12.00	13.3/14.7	5	1	19.9	75.0	100	75	1	100
MLCE13	13.00	14.4/17.6	5	1	23.8	63.0	100	75	1	100
MLCE13A	13.00	14.4/15.9	5	1	21.5	70.0	100	75	1	100
MLCE14	14.00	15.6/19.1	5	1	25.8	58.0	100	75	1	100
MLCE14A	14.00	15.6/17.2	5	1	23.2	65.0	100	75	1	100
MLCE15	15.00	16.7/20.4	5	1	26.9	56.0	100	75	1	100
MLCE15A	15.00	16.7/18.5	5	1	24.4	61.0	100	75	1	100
MLCE16	16.00	17.8/21.8	5	1	28.8	52.0	100	75	1	100
MLCE16A	16.00	17.8/19.7	5	1	26.0	57.0	100	75	1	100
MLCE17	17.00	18.9/23.1	5	1	30.5	49.0	100	75	1	100
MLCE17A	17.00	18.9/20.9	5	1	27.6	54.0	100	75	1	100
MLCE18	18.00	20/24.4	5	1	32.2	46.0	100	75	1	100
MLCE18A	18.00	20/22.1	5	1	29.2	51.0	100	75	1	100
MLCE20	20.00	22.2/27.1	5	1	35.8	42.0	100	75	1	100
MLCE20A	20.00	22.2/24.5	5	1	32.4	46.0	100	75	1	100
MLCE22	22.00	24.4/29.8	5	1	39.4	38.0	100	75	1	100
MLCE22A	22.00	24.4/26.9	5	1	35.5	42.0	100	75	1	100
MLCE24	24.00	26.7/32.6	5	1	43.0	35.0	100	75	1	100
MLCE24A	24.00	26.7/29.5	5	1	38.9	39.0	100	75	1	100
MLCE26	26.00	28.9/35.3	5	1	46.6	32.0	100	75	1	100
MLCE26A	26.00	28.9/31.9	5	1	42.1	36.0	100	75	1	100
MLCE28	28.00	31.1/38	5	1	50.1	30.0	100	75	1	100
MLCE28A	28.00	31.1/34.4	5	1	45.5	33.0	100	75	1	100

Certified RoHS Compliant
UL File # E223026