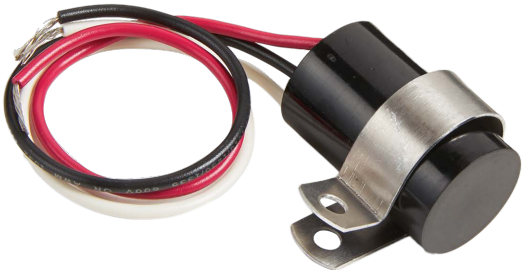
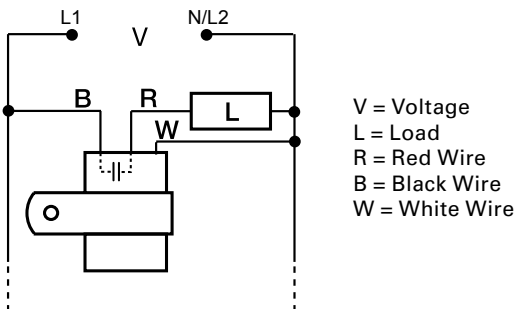


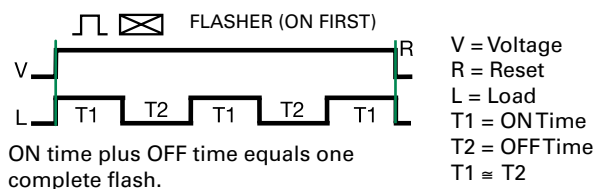
### FS491



#### Wiring Diagram



#### Function Diagram



#### Description

The FS491 is a low leakage AC flasher designed to control LED, or resistive loads. This product offers a solid-state output and may be ordered with an input voltage of 24V to 240VAC, in two ranges. It offers a factory fixed flash rate of 75 FPM or may be ordered with a fixed, custom flash rate ranging from 45 to 150 FPM. The FS491 is the perfect solution for LED lamp flashing.

##### Operation

Upon application of input voltage, the output energizes and the ON time begins. At the end of the ON time, the output de-energizes and the OFF time begins. At the end of the OFF time, the output energizes and the cycle repeats as long as input voltage is applied.

**Reset:** Removing input voltage resets the output and the flash sequence.

#### Features & Benefits

| FEATURES                             | BENEFITS   |
|--------------------------------------|--|
| <b>Totally solid state</b>           | No moving parts to arc and wear out, up to 100 million operations under typical conditions |
| <b>Fully encapsulated</b>            | Protects circuitry from shock, vibration and humidity                                      |
| <b>Extremely low leakage current</b> | Ideal for use in LED lighting applications   |

#### Specifications

##### Technical Data

|                           |  |
|---------------------------|--|
| <b>Operation</b>          | ON/OFF solid-state flasher (continuous duty) |
| <b>Flash Rate</b>         | Fixed at 75 FPM $\pm 20\%$                   |
| <b>Custom Flash Rates</b> | 45 - 150 FPM $\pm 20\%$                      |
| <b>ON/OFF Ratio</b>       | $\approx 50\%$                               |

##### Input

|                          |                     |
|--------------------------|---------------------|
| <b>Voltage</b>           | 24, or 120 - 240VAC |
| <b>Tolerance</b>         | $\pm 15\%$          |
| <b>AC Line Frequency</b> | 50/60Hz             |

##### Output

|                  |                        |
|------------------|------------------------|
| <b>Load Type</b> | LED or resistive       |
| <b>Output</b>    | Bridge Rectifier & FET |

##### Maximum Load Rating

|                                  |                              |
|----------------------------------|------------------------------|
| <b>120VAC to 240VAC</b>          | 0.5A steady state; 5A inrush |
| <b>Max. Load Leakage Current</b> | 250 $\mu$ A                  |

##### Voltage Drop

|  |            |
|--|------------|
|  | 2V typical |
|--|------------|

##### Mechanical

|                   |  |
|-------------------|--|
| <b>Mounting</b>   | Surface mount with one #8 (M4 x 0.7) screw           |
| <b>Dimensions</b> | <b>Dia.</b> 23.9 mm (0.94"); <b>D</b> 38.1 mm (1.5") |

##### Protection

|                  |                            |
|------------------|----------------------------|
| <b>Surge</b>     | IEEE C62.41 - 1991 Level A |
| <b>Circuitry</b> | Encapsulated               |

##### Environmental

|                                      |                              |
|--------------------------------------|------------------------------|
| <b>Operating/Storage Temperature</b> | -20° to 60°C / -40° to 85°C  |
| <b>Humidity</b>                      | 95% relative, non-condensing |
| <b>Weight</b>                        | $\approx 1.1$ oz (31 g)      |