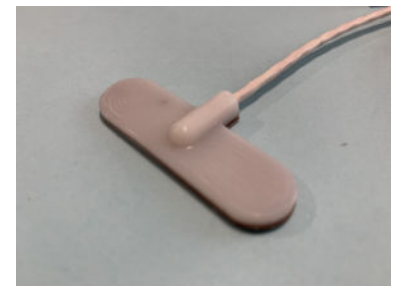
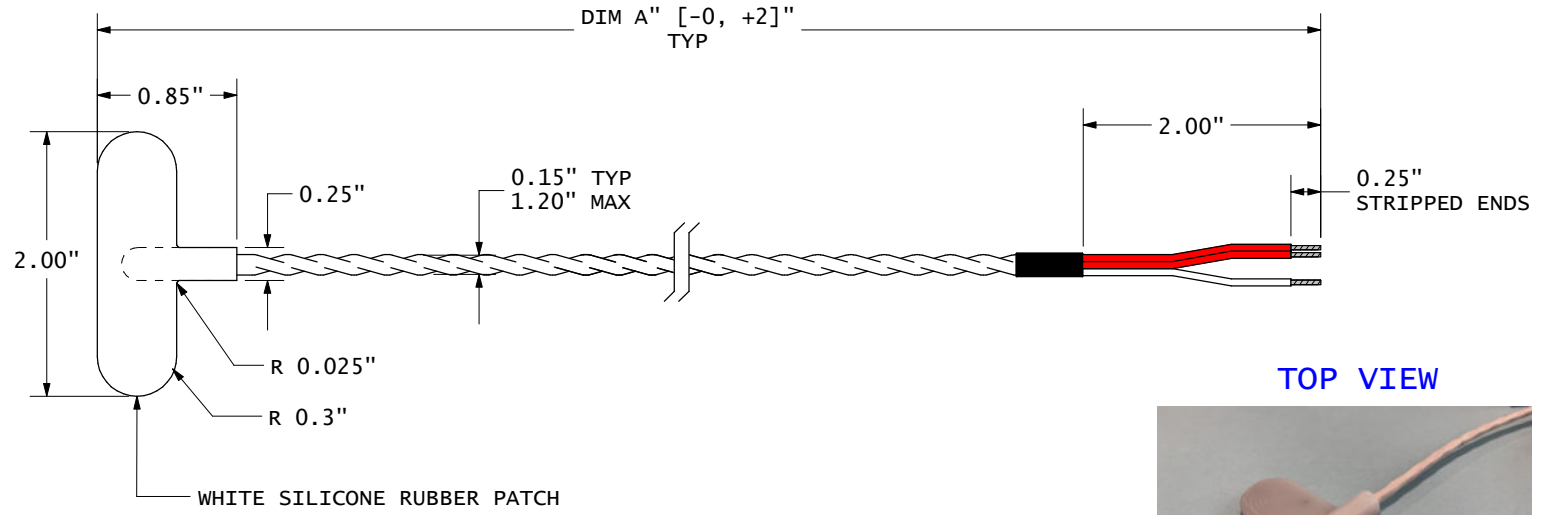
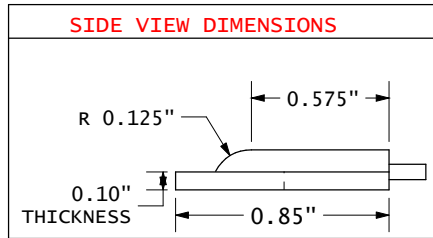


TABLE 1						TABLE 2				
PUI ITEM #	DIM A	DIM B	DIM C	NOTES:	CUSTOMER ITEM#	DWG REV	ECO NUMBER	REV BY	DATE	DESCRIPTION
P100-21033101	41	N/A	N/A	ALL	TBD	X1	21033101	PSM	03/31/21	INITIAL DRAWING
						X2	21072901	PSM	07/29/21	REV TO UPDATE NOTES AND PRODUCT PHOTO

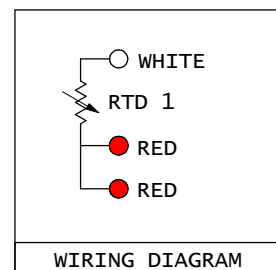


TOP VIEW

°C	OHMS	°C	OHMS	°C	OHMS
0	100.00	102	139.26	206	178.06
2	100.78	104	140.02	208	178.79
4	101.56	106	140.78	210	179.53
6	102.34	108	141.54	212	180.26
8	103.12	110	142.29	214	180.99
10	103.90	112	143.05	216	181.72
12	104.68	114	143.80	218	182.46
14	105.46	116	144.56	220	183.19
16	106.24	118	145.31	222	183.92
18	107.02	120	146.07	224	184.65
20	107.79	122	146.82	226	185.38
22	108.57	124	147.57	228	186.11
24	109.35	126	148.33	230	186.84
25	109.73	128	149.08	232	187.56
26	110.12	130	149.83	234	188.29
28	110.90	132	150.58	236	189.02
30	111.67	134	151.33	238	189.75
32	112.45	136	152.08	240	190.47
34	113.22	138	152.83	242	191.20
36	114.00	140	153.58	244	191.92
38	114.77	142	154.33	246	192.65
40	115.54	144	155.08	248	193.37
42	116.31	146	155.83	250	194.10
44	117.08	148	156.58	252	194.82
46	117.86	150	157.33	254	195.55
48	118.63	152	158.07	256	196.27
50	119.40	154	158.82	258	196.99
52	120.17	156	159.56	260	197.71
54	120.94	158	160.31	262	198.43
56	121.71	160	161.05	264	199.15
58	122.47	162	161.80	266	199.87
60	123.24	164	162.54	268	200.59
62	124.01	166	163.29	270	201.31
64	124.78	168	164.03	272	202.03
66	125.54	170	164.77	274	202.75
68	126.31	172	165.51	276	203.47
70	127.08	174	166.26	278	204.19
72	127.84	176	167.00	280	204.90
74	128.61	178	167.74	282	205.62
76	129.37	180	168.48	284	206.34
78	130.13	182	169.22	286	207.05
80	130.90	184	169.96	288	207.77
82	131.66	186	170.70	290	208.48
84	132.42	188	171.43	292	209.20
86	133.18	190	172.17	294	209.91
88	133.95	192	172.91	296	210.63
90	134.71	194	173.65	298	211.34
92	135.47	196	174.38	300	212.05
94	136.23	198	175.12	302	212.76
96	136.99	200	175.86	304	213.48
98	137.75	202	176.59	306	214.19
100	138.51	204	177.33	308	214.90


**PRELIMINARY DRAWING**  
 THIS DRAWING IS NOT FOR PRODUCTION USE OR SUBSTITUTION FOR ANY PART UNTIL FORMAL APPROVAL AND RELEASE.

- NOTES:
- 1) SENSOR: PT100, .00385 ALPHA CLASS 'A' ( $\pm 0.06\%$ ) PER IEC751 AND DIN43760  
SEE TABLE 3 FOR A PARTIAL R VS. T CHART
  - 2) LEADS: 3 CONDUCTOR TEFLON INSULATED CABLE.  
EACH CONDUCTOR IS 24 AWG, SILVER PLATED COPPER, 7/32 STRANDS, TEFLON INSULATED
  - 3) CONSTRUCTION: SILICONE RUBBER MATERIAL MOLDED OVER THE SENSOR AND PART OF THE WIRE
  - 4) TERMINATION: 2" FLYING LEADS WITH 1/4" STRIPPED ENDS
  - 5) OVERALL TEMPERATURE RATING: -30°C TO 200°C [-22°F TO 392°F]
  - 6) APPLICATION: FLEXIBLE MOLDED SILICONE PATCH FOR SURFACE TEMPERATURE
  - 7) ADHESIVE: SILICONE ADHESIVE GOOD FOR ONE APPLICATION FOR STRONG BOND WITH SURFACE
  - 8) PACKAGING: PARTS ARE WRAPPED AND CAN BE SHIPPED INDIVIDUALLY OR IN BULK



DWG NOT TO SCALE

QUOTE #: Q21033101 SAMPLE DATE: TBD  
 CUSTOMER: TBD  
 APPROVED:  
 This drawing is the intellectual property of Probes Unlimited, Inc. It is not to be reproduced without the express written consent of Probes Unlimited, disclosure of this information is expressly prohibited.  
 © Copyright 2021. by Probes Unlimited, Inc. All International Rights reserved.



Manufacturers of OEM Sensing Devices

Probes Unlimited, Inc.  
 836 W. 8th Street  
 Lansdale, PA 19446  
[www.probesunlimited.com](http://www.probesunlimited.com)  
[info@probesunlimited.com](mailto:info@probesunlimited.com)

DRAWING #: <b>P100-309</b>	REV: <b>X2</b>
-------------------------------	-------------------

ALL DIMENSIONS ARE IN INCHES, STANDARD TOLERANCES UNLESS STATED OTHERWISE:  
 X.XX" =  $\pm .12$ "  
 X.XXX" =  $\pm .062$ "  
 ANGLES =  $\pm 3^\circ$