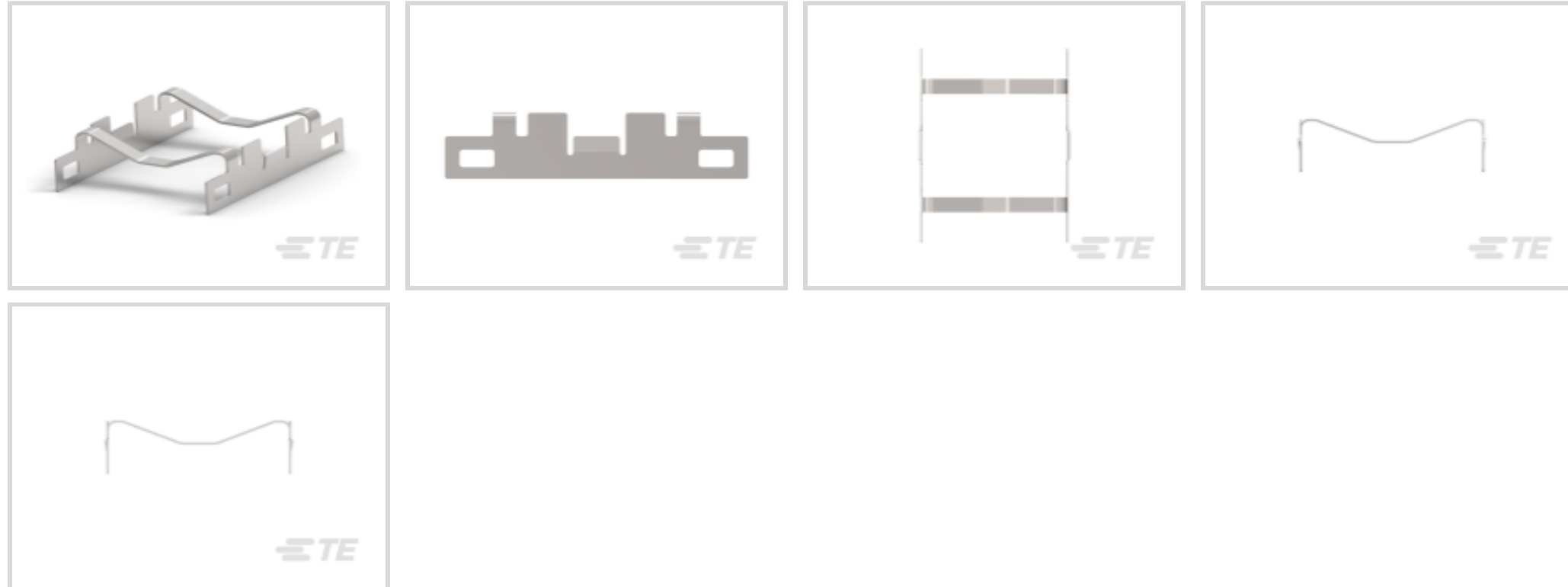




Connectors > Connector Accessories > Heat Sinks



Device Type: **QSFP**

Power Rating: **5 W, 10 W, 15 W**

### Features

#### Product Type Features

Device Type	QSFP
-------------	------

#### Electrical Characteristics

Power Rating	5 W, 10 W, 15 W
--------------	-----------------

#### Body Features

Primary Product Material	Stainless Steel
--------------------------	-----------------

### Product Compliance

[For compliance documentation, visit the product page on TE.com>](#)

EU RoHS Directive 2011/65/EU	Compliant
EU ELV Directive 2000/53/EC	Compliant
China RoHS 2 Directive MIIT Order No 32, 2016	No Restricted Materials Above Threshold
EU REACH Regulation (EC) No. 1907/2006	Current ECHA Candidate List: JAN 2024 (240) Candidate List Declared Against: JAN 2024 (240) Does not contain REACH SVHC
Halogen Content	Low Halogen - Br, Cl, F, I < 900 ppm per homogenous material. Also BFR/CFR/PVC Free
Solder Process Capability	Not applicable for solder process capability



Product Compliance Disclaimer

This information is provided based on reasonable inquiry of our suppliers and represents our current actual knowledge based on the information they provided. This information is subject to change. The part numbers that TE has identified as EU RoHS compliant have a maximum concentration of 0.1% by weight in homogenous materials for lead, hexavalent chromium, mercury, PBB, PBDE, DBP, BBP, DEHP, DIBP, and 0.01% for cadmium, or qualify for an exemption to these limits as defined in the Annexes of Directive 2011/65/EU (RoHS2). Finished electrical and electronic equipment products will be CE marked as required by Directive 2011/65/EU. Components may not be CE marked. Additionally, the part numbers that TE has identified as EU ELV compliant have a maximum concentration of 0.1% by weight in homogenous materials for lead, hexavalent chromium, and mercury, and 0.01% for cadmium, or qualify for an exemption to these limits as defined in the Annexes of Directive 2000/53/EC (ELV). Regarding the REACH Regulation, the information TE provides on SVHC in articles for this part number is based on the latest European Chemicals Agency (ECHA) 'Guidance on requirements for substances in articles' posted at this URL: <https://echa.europa.eu/guidance-documents/guidance-on-reach>

## Compatible Parts



TE Part # CAT-C11-H5011  
QSFP-Four SFP+ I/O Cable Assembly  
30 AWG



TE Part # 1888810-2  
EMI/Dust Cover, XFP And QSFP



TE Part # 2110819-1  
QSFP+ Enh EVERCLEAR PT Conn



TE Part # 1888674-1  
Cage Assy, QSFP, Through Bezel



TE Part # 1-2053638-6  
C/A, QSFP, 0.5M, P1-P2,  
UNEQUALIZED



TE Part # CAT-C11-H5011  
QSFP-Four SFP+ I/O Cable Assembly  
28 AWG



TE Part # CAT-C11-H501142  
QSFP to QSFP I/O Cable Assembly: 33  
AWG

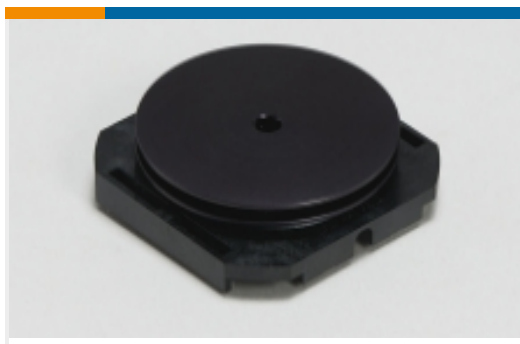


TE Part # 2202165-4  
QSFP TO QSFP, 26AWG, FDR, 4.0  
METER



TE Part # 2202165-5  
QSFP TO QSFP, 26AWG, FDR, 5.0  
METER

Also in the Series | **QSFP/QSFP+**



Heat Sinks(1)



Light Pipes(8)



Pluggable I/O Cable Assemblies(19)



Pluggable IO Connectors & Cages(154)

## Customers Also Bought



TE Part # 1888247-1  
20 POS SMT CONN, SFP/SFP+, 30A



TE Part # 2170707-3  
CAGE ASSY, 1X6, QSFP28, SPRING, HS



TE Part # 2-1926739-5  
AssyMinipak Hdl25s10pRARecptSc



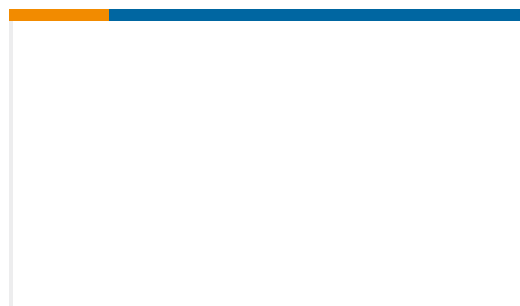
TE Part # 2149730-1  
SFP+ 1x4 Cage, Heatsinks and Lightpipes



TE Part # 2007198-2  
SFP+ 1x1 Cage Assembly, Press-Fit



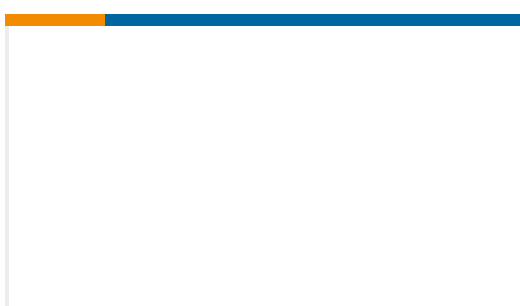
TE Part # 2007132-1  
SFP+ 1X4 Cage Assembly, Press-



TE Part # 1888251-5  
Low Profile,RJ45,1x4,Bi-Color



TE Part # 1367643-1  
DWDM Cage Assembly, 11 PF



TE Part # 2304670-2  
zSFP+ 1x4 Cage Assembly, Press-Fit

## Documents

### CAD Files

3D PDF

3D

Customer View Model

[ENG\\_CVM\\_CVM\\_2007304-1\\_A.2d\\_dxf.zip](#)

English

Customer View Model

[ENG\\_CVM\\_CVM\\_2007304-1\\_A.3d\\_igs.zip](#)



English

Customer View Model

[ENG\\_CVM\\_CVM\\_2007304-1\\_A.3d\\_stp.zip](#)

English

By downloading the CAD file I accept and agree to the [Terms and Conditions](#) of use.

## Product Specifications

[QSFP Behind Bezel Cage Assembly, Heat Sink, and Light Pipe](#)

English