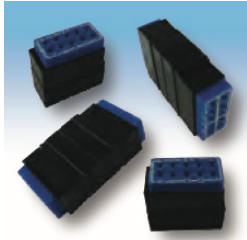


Amphenol offers a line of commercial junction modules that perform to the M81714 electrical and mechanical standards. These modules are labeled with the commercial part number only. These are non-QPL parts.

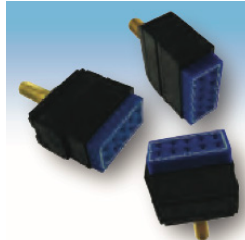
## Series I Commercial Junction Modules



**Feedback, Feedthrough & Bussing Modules**



**Electronic Modules**



**Ground Modules**



**Single & Dual In-Line & Electronic Splices**



**Mounting Tracks**

Series I Commercial Terminal Junction Modules are robust, reliable and performs to M81714 electrical and mechanical standards. Offered in various types and configurations: Feedback/Feedthrough, Electronic, In-Line Splice, and Ground, Series I Commercial Terminal Junction Modules use standard M39029/1 pin contacts. Mounting rail and installation/termination accessories are available and customization is always an option.

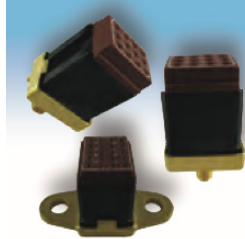
## Series II Commercial Socket Junction Modules



**Feedback, Feedthrough & Bussing Modules**



**Board Mount Modules**



**Ground Modules**



**Sealed Splices**



**Mounting Tracks**

Series II Commercial Socket Junction Modules are robust, reliable and performs to M81714 electrical and mechanical standards. Offered in various types and configurations: Feedback/Feedthrough, Electronic, In-Line Splice, and Ground, Series II Commercial Socket Junction Modules Series II uses M39029/22 socket contacts pin contacts. Mounting rail and installation/termination accessories are available and customization is always an option.

## Series I Commercial Families (Non QPL)

TJM	Size 12, 16, 20	Performs to M81714 Style /1, /2, /3, /4, /6, /7, /8, /9
TJE	Size 12, 16, 20 Electronic	Performs to M81714/26, /25 electrical and mechanical standards
TJHD	Size 22 Electronic	Performs to M81714 Style /17
TJT	Tracks	Performs to M81714 Style /5, /10, /16 (light weight)
TJF	Flange Ground	Performs to M81714/28 electrical and mechanical standards
TJG	Stud Ground	Performs to M81714/27 electrical and mechanical standards
TJS	Single & Double Splices	Performs to M81714 Style /11, /12
TJSE <sup>1</sup>	Electronic Splices	Performs to M81714 Style /21, /23, /24

## Series II Commercial Families (Non QPL)

SJM	Modules	Performs to M81714 Style /61
SJE*	Electronics	Performs to M81714 /62 electrical and mechanical standards
SJT	Metal Track	Performs to M81714 Style /67
SJTC	Composite Track	Performs to M81714 /67 electrical and mechanical standards
SJG	Ground Modules	Performs to M81714 Style /63
SJS	Single & Double Splices	Performs to M81714 Style /65
SJP	Board Mount	Performs to M81714 electrical and mechanical standards

**\* Notes:**

- Electronic coverage includes: Resistors, capacitors, fuses and diodes
- The TJE, SJE and SJTC families have always been commercial parts that perform to the M81714 electrical and mechanical standards.
- Many of the TJSE family members have always been commercial parts that perform to the M81714 electrical and mechanical standards. Exceptions are noted in the List of Commercial Junction Modules with MilSpec Equivalent table.

**LIST OF COMMERCIAL JUNCTION MODULES W/ MIL-SPEC EQUIVALENT**

**Amphenol Pcd**

Mil/Spec P/N	Commercial P/N	Contacts	M81714 P/N	Mil/Spec P/N	Commercial P/N	Contacts	M81714 P/N	Mil/Spec P/N	Commercial P/N	Contacts	M81714 P/N
TJM122601	TJM122801	LC	M81714/1-DA1	TJM116602	TJM116802	LC	M81714/3-DB1	TJM222607	TJM222807	LC	M81714/6-DD1
TJM122701	TJM122901	WC		TJM116702	TJM116902	WC		TJM222707	TJM222907	WC	
TJM122602	TJM122802	LC	M81714/1-DB1	TJM116603	TJM116803	LC	M81714/3-DB2	TJM222608	TJM222808	LC	M81714/6-DE1
TJM122702	TJM122902	WC		TJM116703	TJM116903	WC		TJM222708	TJM222908	WC	
TJM122603	TJM122803	LC	M81714/1-DB3	TJM116605	TJM116805	LC	M81714/3-DC1	TJM222609	TJM222809	LC	M81714/6-DJ1
TJM122703	TJM122903	WC		TJM116705	TJM116905	WC		TJM222709	TJM222909	WC	
TJM122604	TJM122804	LC	M81714/1-DC1	TJM116606	TJM116806	LC	M81714/3-DC2	TJM220601	TJM220801	LC	M81714/7-DA1
TJM122605	TJM122805	WC		TJM116706	TJM116906	WC		TJM220701	TJM220901	WC	
TJM122704	TJM122904	LC	M81714/1-DC1	TJM116607	TJM116807	LC	M81714/3-DD1	TJM220602	TJM220802	LC	M81714/7-DB1
TJM122705	TJM122905	WC		TJM116707	TJM116907	WC		TJM220702	TJM220902	WC	
TJM122606	TJM122806	LC	M81714/1-DC2	TJM112601	TJM112801	LC	M81714/4-DA1	TJM220603	TJM220803	LC	M81714/7-DB2
TJM122706	TJM122906	WC		TJM112701	TJM112901	WC		TJM220703	TJM220903	WC	
TJM122610	TJM122810	LC	M81714/1-DC3	TJM112602	TJM112802	LC	M81714/4-DB1	TJM220604	TJM220804	LC	M81714/7-DB3
TJM122710	TJM122910	WC		TJM112702	TJM112902	WC		TJM220704	TJM220904	WC	
TJM122612	TJM122812	LC	M81714/1-DC4	TJM112603	TJM112803	LC	M81714/4-DB2	TJM220605	TJM220805	LC	M81714/7-DC1
TJM122712	TJM122912	WC		TJM112703	TJM112903	WC		TJM220705	TJM220905	WC	
TJM122607	TJM122807	LC	M81714/1-DD1	TJM112605	TJM112805	LC	M81714/4-DC1	TJM220606	TJM220806	LC	M81714/7-DC2
TJM122707	TJM122907	WC		TJM112705	TJM112905	WC		TJM220706	TJM220906	WC	
TJM122611	TJM122811	LC	M81714/1-DD2	TJM112606	TJM112806	LC	M81714/4-DC2	TJM220607	TJM220807	LC	M81714/7-DD1
TJM122711	TJM122911	WC		TJM112706	TJM112906	WC		TJM220707	TJM220907	WC	
TJM122608	TJM122808	LC	M81714/1-DE1	TJM112607	TJM112807	LC	M81714/4-DD1	TJM220608	TJM220808	LC	M81714/7-DE1
TJM122708	TJM122908	WC		TJM112707	TJM112907	WC		TJM220708	TJM220908	WC	
TJM120601	TJM120801	LC	M81714/2-DA1	TJT701010	TJT801010	Track	M81714/5-1	TJM220609	TJM220809	LC	M81714/7-DJ1
TJM120701	TJM120901	WC		TJT701012	TJT801012	Track	M81714/5-10	TJM220709	TJM220909	WC	
TJM120602	TJM120802	LC	M81714/2-DB1	TJT701013	TJT801013	Track	M81714/5-11	TJM216601	TJM216801	LC	M81714/8-DA1
TJM120702	TJM120902	WC		TJT701014	TJT801014	Track	M81714/5-12	TJM216701	TJM216901	WC	
TJM120603	TJM120803	LC	M81714/2-DB2	TJT701015	TJT801015	Track	M81714/5-13	TJM216602	TJM216802	LC	M81714/8-DB1
TJM120703	TJM120903	WC		TJT701003	TJT801003	Track	M81714/5-2	TJM216702	TJM216902	WC	
TJM120604	TJM120804	LC	M81714/2-DB3	TJT701004	TJT801004	Track	M81714/5-3	TJM216603	TJM216803	LC	M81714/8-DB2
TJM120704	TJM120904	WC		TJT701005	TJT801005	Track	M81714/5-4	TJM216703	TJM216903	WC	
TJM120605	TJM120805	LC	M81714/2-DC1	TJT701006	TJT801006	Track	M81714/5-5	TJM216605	TJM216805	LC	M81714/8-DC1
TJM120705	TJM120905	WC		TJT701007	TJT801007	Track	M81714/5-6	TJM216705	TJM216905	WC	
TJM120606	TJM120806	LC	M81714/2-DC2	TJT701008	TJT801008	Track	M81714/5-7	TJM216606	TJM216806	LC	M81714/8-DC2
TJM120706	TJM120906	WC		TJT701009	TJT801009	Track	M81714/5-8	TJM216706	TJM216906	WC	
TJM120610	TJM120810	LC	M81714/2-DC3	TJT701011	TJT801011	Track	M81714/5-9	TJM216607	TJM216807	LC	M81714/8-DD1
TJM120710	TJM120910	WC		TJM222601	TJM222801	LC	M81714/6-DA1	TJM216707	TJM216907	WC	
TJM120612	TJM120812	LC	M81714/2-DC4	TJM222701	TJM222901	WC		M81714/6-DB1	TJM216608	TJM216808	LC
TJM120712	TJM120912	WC		TJM222602	TJM222802	LC	TJM216708		TJM216908	WC	
TJM120607	TJM120807	LC	M81714/2-DD1	TJM222702	TJM222902	WC	M81714/6-DB2	TJM216609	TJM216809	LC	M81714/8-DH1
TJM120707	TJM120907	WC		TJM222603	TJM222803	LC		TJM216709	TJM216909	WC	
TJM120611	TJM120811	LC	M81714/2-DD2	TJM222703	TJM222903	WC	M81714/6-DB3	TJT702010	TJT802010	Track	M81714/10-1
TJM120711	TJM120911	WC		TJM222604	TJM222804	LC		TJT702003	TJT802003	Track	
TJM120608	TJM120808	LC	M81714/2-DE1	TJM222704	TJM222904	WC	M81714/6-DC1	TJT702004	TJT802004	Track	M81714/10-3
TJM120708	TJM120908	WC		TJM222605	TJM222805	LC		TJT702006	TJT802006	Track	M81714/10-5
TJM116601	TJM116801	LC	M81714/3-DA1	TJM222705	TJM222905	WC	M81714/6-DC2	TJT702008	TJT802008	Track	M81714/10-7
TJM116701	TJM116901	WC		TJM222606	TJM222806	LC		TJT702009	TJT802009	Track	M81714/10-8
				TJM222706	TJM222906	WC					



Mil/Spec P/N	Commercial P/N	Contacts	M81714 P/N	Mil/Spec P/N	Commercial P/N	Contacts	M81714 P/N
SJM020300	SJM820300	WC	M81714/60-20-03	SJS320701	SJS820701	WC	M81714/65-20-2
SJM020301	SJM820301	LC		SJS320601	SJS820601	LC	
SJM020400	SJM820400	WC	M81714/60-20-04	SJS322700	SJS822700	WC	M81714/65-22-1
SJM020401	SJM820401	LC		SJS322600	SJS822600	LC	
SJM020600	SJM820600	WC	M81714/60-20-06	SJS322701	SJS822701	WC	M81714/65-22-2
SJM020601	SJM820601	LC		SJS322601	SJS822601	LC	
SJM022100	SJM822100	WC	M81714/60-22-01	SJT502404	SJT502401	Track	M81714/67-02
SJM022101	SJM822101	LC		SJT503404	SJT503401	Track	M81714/67-03
SJM022200	SJM822200	WC	M81714/60-22-02	SJT504404	SJT504401	Track	M81714/67-04
SJM022201	SJM822201	LC		SJT505404	SJT505401	Track	M81714/67-05
SJM022400	SJM822400	WC	M81714/60-22-04	SJT506404	SJT506401	Track	M81714/67-06
SJM022401	SJM822401	LC		SJT507404	SJT507401	Track	M81714/67-07
SJM022500	SJM822500	WC	M81714/60-22-05	SJT508404	SJT508401	Track	M81714/67-08
SJM022501	SJM822501	LC		SJT509404	SJT509401	Track	M81714/67-09
SJM022600	SJM822600	WC	M81714/60-22-06	SJT510404	SJT510401	Track	M81714/67-10
SJM022601	SJM822601	LC		SJT512404	SJT512401	Track	M81714/67-12
SJM022700	SJM822700	WC	M81714/60-22-10	SJT513404	SJT513401	Track	M81714/67-13
SJM022701	SJM822701	LC		SJT514404	SJT514401	Track	M81714/67-14
SJM000500	SJM800500	WC	M81714/61-0W	SJT515404	SJT515401	Track	M81714/67-15
SJM000501	SJM800501	LC		SJT516404	SJT516401	Track	M81714/67-16
SJM000200	SJM800200	WC	M81714/61-0X	SJT518404	SJT518401	Track	M81714/67-18
SJM000201	SJM800201	LC		SJT519404	SJT519401	Track	M81714/67-19
SJM000800	SJM800800	WC	M81714/61-0Y	SJT520404	SJT520401	Track	M81714/67-20
SJM000801	SJM800801	LC		SJT521404	SJT521401	Track	M81714/67-21
SJM000100	SJM800100	WC	M81714/61-0Z	SJT525404	SJT525401	Track	M81714/67-25
SJM000101	SJM800101	LC		SJT530404	SJT530401	Track	M81714/67-30
SJG012270	SJG812270	WC	M81714/63-12F	SJT532404	SJT532401	Track	M81714/67-32
SJG012271	SJG812271	LC		SJT540404	SJT540401	Track	M81714/67-40
SJG016270	SJG816270	WC	M81714/63-16F				
SJG016271	SJG816271	LC					
SJG016170	SJG816170	WC	M81714/63-16S				
SJG016171	SJG816171	LC					
SJG020270	SJG820270	WC	M81714/63-20F				
SJG020271	SJG820271	LC					
SJG020170	SJG820170	WC	M81714/63-20S				
SJG020171	SJG820171	LC					
SJG022270	SJG822270	WC	M81714/63-22F				
SJG022271	SJG822271	LC					
SJG022170	SJG822170	WC	M81714/63-22S				
SJG022171	SJG822171	LC					
SJS316700	SJS816700	WC	M81714/65-16-1				
SJS316600	SJS816600	LC					
SJS316701	SJS816701	WC	M81714/65-16-2				
SJS316601	SJS816601	LC					
SJS320700	SJS820700	WC	M81714/65-20-1				
SJS320600	SJS820600	LC					