

## Data

### Electrical data

### Ratings per IEC/EN

Rated current	32 A
---------------	------

### Physical data

Pin spacing	10 mm / 0.394 inches
-------------	----------------------

Jumper assignment	1-3
-------------------	-----

### Mechanical data

Suitable	for 745 Series (4 mm <sup>2</sup> )
----------	-------------------------------------

Subject to changes. Please also observe the further product documentation!



## Material data

Note (material data)

Information on material specifications can be found here

Color	silver-colored
Contact material	Copper alloy
Contact plating	Tin
Weight	1.2 g

## Commercial data

Product Group	4 (Printed Circuit Connectors)
eCl@ss 10.0	27-14-11-40
eCl@ss 9.0	27-44-04-92
ETIM 8.0	EC000489
ETIM 7.0	EC000489
ECCN	NO DATA
PU (SPU)	250 (50) pcs
Packaging type	box
Country of origin	CH
GTIN	4044918303392
Customs tariff number	85366990990

## Environmental Product Compliance

RoHS Compliance Status	Compliant, No Exemption
------------------------	-------------------------

## Downloads

### Documentation

#### Additional Information

Technical Section	2019 年4月3日	pdf	Download
Technical explanations		2.1 MB	

## Environmental Product Compliance

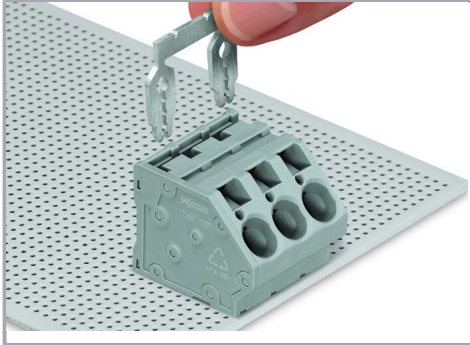
### Compliance Search

Environmental Product Compliance 745-281	URL	Download
--	-----	----------

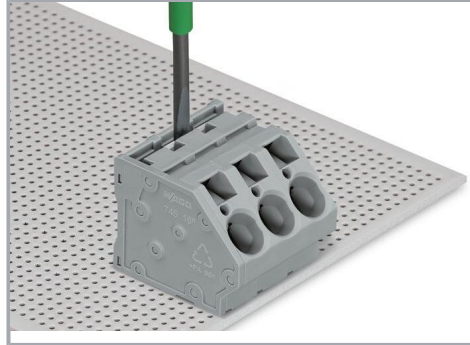
Subject to changes. Please also observe the further product documentation!

Jumper; silver-colored

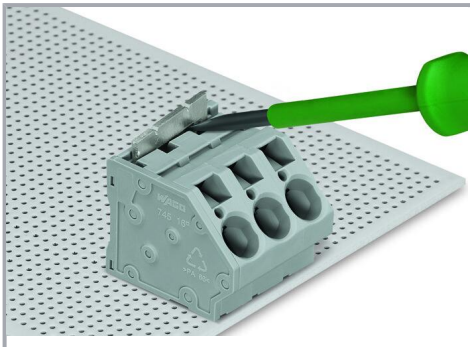
### Installation Notes



Inserting a comb-style jumper bar.



To insert a comb-style jumper bar, push it down using a screwdriver until it hits the backstop – 745 Series.



To remove the jumper bar, lift it up using a screwdriver – 745 Series.

Subject to changes. Please also observe the further product documentation!