

## Data

### Electrical data

Subject to changes. Please also observe the further product documentation!

WAGO GmbH & Co. KG  
Hansastr. 27  
32423 Minden  
Phone: +49571 887-0 | Fax: +49571 887-169  
Email: [info.de@wago.com](mailto:info.de@wago.com) | Web: [www.wago.com](http://www.wago.com)

Do you have any questions about our products?  
We are always happy to take your call at +49 (571) 887-44222.

**Ratings per IEC/EN**

Nominal voltage (III/3)	400 V
Rated current	41 A

**Physical data**

Jumper assignment	1-2
-------------------	-----

**Material data**

Note (material data)	Information on material specifications can be found here
Color	blue
Insulation material	Polyamide (PA66)
Weight of insulation material	0.28 g
Weight	2.7 g

**Environmental requirements**

Continuous operating temperature	-60 ... +105 °C
----------------------------------	-----------------

**Commercial data**

ETIM 8.0	EC000489
ETIM 7.0	EC000489
ECCN	NO DATA
PU (SPU)	5 pcs
Packaging type	bag
Country of origin	CN
GTIN	4055144068115
Customs tariff number	85366990990

**Environmental Product Compliance**

RoHS Compliance Status	Compliant, No Exemption
------------------------	-------------------------

**Downloads****Documentation****Bid Text**

Subject to changes. Please also observe the further product documentation!

WAGO GmbH & Co. KG  
 Hansastr. 27  
 32423 Minden  
 Phone: +49571 887-0 | Fax: +49571 887-169  
 Email: [info.de@wago.com](mailto:info.de@wago.com) | Web: [www.wago.com](http://www.wago.com)

Do you have any questions about our products?  
 We are always happy to take your call at +49 (571) 887-44222.



---

221-942/000-006 X81 - Datei	xml 3.0 kB	Download
--------------------------------	---------------	----------

---

221-942/000-006 doc - Datei	docx 24.5 kB	Download
--------------------------------	-----------------	----------

---

#### Additional Information

Technical Section Technical explanations	pdf 2.3 MB	Download
---	---------------	----------

---

#### CAD/CAE-Data

##### CAD data

2D/3D Models 221-942/000-006	URL	Download
------------------------------	-----	----------

---

##### Asset Administration Shell

Asset Administration Shell 221-942/000-006	URL	Download
--	-----	----------

---

#### Environmental Product Compliance

##### Compliance Search

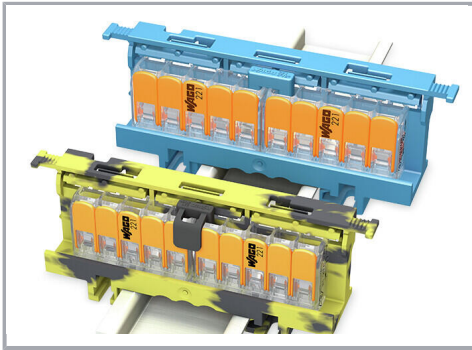
Environmental Product Compliance 221-942/000-006 Jumper; for conductor entry; 2-way; insulated; blue	URL	Download
---	-----	----------

---

#### Installation Notes

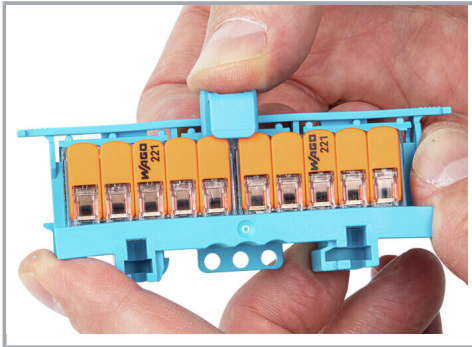
##### Commoning

Subject to changes. Please also observe the further product documentation!



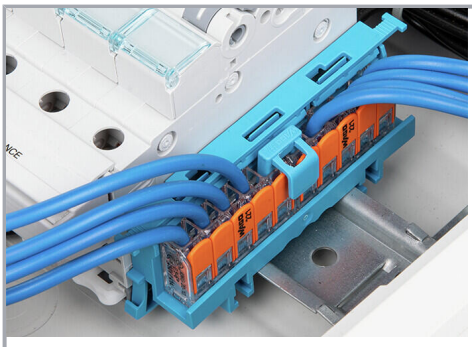
Extending the N and PE (ground) distribution via jumper

### Commoning



Insert the jumper with a locking function into closed clamping units.

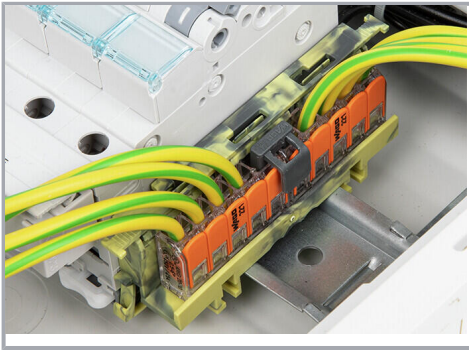
### Commoning



With a locking function:  
The lockable jumper is plugged into the splicing connectors.

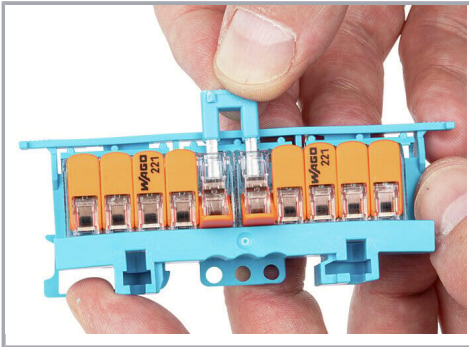
### Commoning

Subject to changes. Please also observe the further product documentation!



The lockable jumper is plugged into the splicing connectors.

### Commoning



Remove the jumper from open clamping units.

Subject to changes. Please also observe the further product documentation!