

# Data sheet

## 3478.4 FQI 4/8 BK

Insulated cross-connector, No. of poles: 8, Mounting type: Plug in, Width: 48.7 mm, Colour: Black

RAL: 9005

### Business data

Article number	3478.4
Article name	FQI 4/8 BK
GTIN (EAN)	4044211113650
Packaging unit	10
Quantity unit	PC
Weight per piece (not including packaging)	5.96 g
Weight per piece (including packaging)	5.98 g
Unit of weight	G
Customs number	85389099
Country of origin	CZ
Prio-Article	3478.8
Product description	Insulated cross-connector

### Technical data

#### Dimensions

Length	4 mm
Width	48.7 mm
Pitch size	6.1 mm

#### Ratings

Max. voltage	800 V
Rated current	32 A
Current load, max.	32 A
Rated cross-section	4 mm <sup>2</sup>

#### Connection data

No. of poles	8
--------------	---

#### Materials

Material	Copper
Surface	Tin-nickel
Insulation housing	Polyamide 6.6
Flammability class UL 94	V-2
Working temperature, min.	-40 °C
Working temperature, max.	105 °C

#### Further technical data

Mounting type	Plug in
Number of bridged terminals	8

#### Environmental Product Compliance

REACH Conform	yes
REACH Reference date	2023-06-14
REACH Candidate Substance Note	No
RoHS Conform	yes

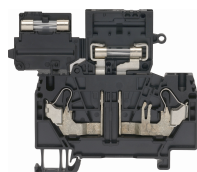
---

### Media

---

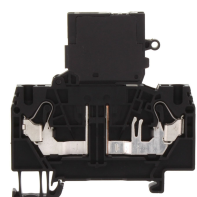
### Accessories

#### ##INVERSE##CONTA-CONNECT



Fuse-disconnect terminal, Push-in connection, Mounting type: Mounting rail TS 35/7.5,  
Rated cross-section: 4 mm<sup>2</sup>, Width: 6 mm, Colour: Black

Article number	Article name	GTIN (EAN)	Packaging unit
<u>3290.4</u>	FSIK 4/2A BK	4044211180287	25 ST



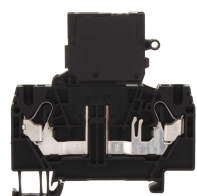
Fuse-disconnect terminal, Push-in connection, Mounting type: Mounting rail TS 35/7.5,  
Rated cross-section: 4 mm<sup>2</sup>, Width: 6 mm, Colour: Black

Article number	Article name	GTIN (EAN)	Packaging unit
<u>3291.4</u>	FSIK 4/2A/LED 12-30V AC/DC BK	4044211188962	25 ST



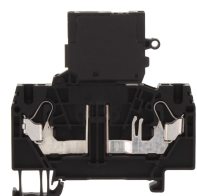
Disconnect-blade terminal, Push-in connection, Mounting type: Mounting rail TS 35/7.5,  
Rated cross-section: 4 mm<sup>2</sup>, Width: 6.1 mm, Colour: Black

Article number	Article name	GTIN (EAN)	Packaging unit
<u>3239.4</u>	FSIK 4/2A/MT BK	4044211209933	50 ST



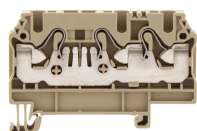
Fuse-disconnect terminal, Push-in connection, Mounting type: Mounting rail TS 35/7.5,  
Rated cross-section: 4 mm<sup>2</sup>, Width: 6 mm, Colour: Black

Article number	Article name	GTIN (EAN)	Packaging unit
<u>3292.4</u>	FSIK 4/2A/LED 30-60V AC/DC BK	4044211188979	25 ST



Fuse-disconnect terminal, Push-in connection, Mounting type: Mounting rail TS 35/7.5,  
Rated cross-section: 4 mm<sup>2</sup>, Width: 6 mm, Colour: Black

Article number	Article name	GTIN (EAN)	Packaging unit
<u>3293.4</u>	FSIK 4/2A/LED 110-250V AC/DC BK	4044211188986	25 ST



Feed-through terminal, Push-in connection, Mounting type: Mounting rail TS 35/7.5,  
Rated cross-section: 4 mm<sup>2</sup>, Width: 6.1 mm, Colour: Beige

Article number	Article name	GTIN (EAN)	Packaging unit
<u>3221.2</u>	FRK 4/3A BG	4044211109981	100

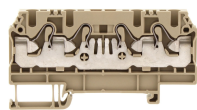
# Data sheet

## 3478.4 FQI 4/8 BK

---

### ##INVERSE##CONTA-CONNECT

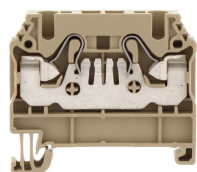
---



Feed-through terminal, Push-in connection, Mounting type: Mounting rail TS 35/7.5,  
Rated cross-section: 4 mm<sup>2</sup>, Width: 6.1 mm, Colour: Beige

Article number	Article name	GTIN (EAN)	Packaging unit
<u>3222.2</u>	FRK 4/4A BG	4044211110048	100

---



Feed-through terminal, Push-in connection, Mounting type: Mounting rail TS 35/7.5,  
Rated cross-section: 4 mm<sup>2</sup>, Width: 6.1 mm, Colour: Beige

Article number	Article name	GTIN (EAN)	Packaging unit
<u>3220.2</u>	FRK 4/2A BG	4044211109929	100

---