

PTCM-MP-P 0,14-0,5 R - Crimp contact



1013778

<https://www.phoenixcontact.com/us/products/1013778>

Please be informed that the data shown in this PDF document is generated from our online catalog. Please find the complete data in the user documentation. Our general terms of use for downloads are valid.



Crimp contact, nominal current: 6 A, contact connection type: Socket, connection method: Crimp connection, contact surface: Tin, type of packaging: Belt

Commercial data

Item number	1013778
Packing unit	5,000 pc
Minimum order quantity	5,000 pc
Sales key	AA01
Product key	AAACPD
GTIN	4055626493121
Weight per piece (including packing)	0.322 g
Weight per piece (excluding packing)	0.322 g
Customs tariff number	85366990
Country of origin	DE

PTCM-MP-P 0,14-0,5 R - Crimp contact



1013778

<https://www.phoenixcontact.com/us/products/1013778>

Technical data

Product properties

Product type	Crimp contact
Product family	PTCM-MP-P
Pitch	0 mm

Connection data

Connection method	Crimp connection
Contact connection type	Socket
Stripping length	4.1 mm ... 4.6 mm
Conductor cross section flexible	0.14 mm² ... 0.5 mm²
Conductor cross section AWG	26 ... 20

Material specifications

Contact surface	Tin Sn
Contact surface material	Tin
Metal surface terminal point (top layer)	Tin (4 - 8 µm Sn)
Metal surface contact area (top layer)	Tin (4 - 8 µm Sn)
Surface characteristics	hot-dip tin-plated
Contact material	Cu alloy

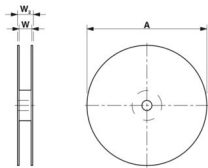
Dimensions

Pitch	0 mm
-------	------

Electrical properties

Nominal current I _N	6 A
--------------------------------	-----

Packaging specifications

Dimensional drawing	
Type of packaging	Belt

PTCM-MP-P 0,14-0,5 R - Crimp contact



1013778

<https://www.phoenixcontact.com/us/products/1013778>

Classifications

ECLASS

ECLASS-11.0	27460403
ECLASS-13.0	27460403
ECLASS-12.0	27460403

ETIM

ETIM 9.0	EC000796
----------	----------

UNSPSC

UNSPSC 21.0	39121500
-------------	----------

PTCM-MP-P 0,14-0,5 R - Crimp contact



1013778

<https://www.phoenixcontact.com/us/products/1013778>

Environmental product compliance

EU RoHS	
Fulfills EU RoHS substance requirements	Yes, No exemptions
China RoHS	
Environment friendly use period (EFUP)	EFUP-E
	No hazardous substances above the limits
EU REACH SVHC	
REACH candidate substance (CAS No.)	No substance above 0.1 wt%

PTCM-MP-P 0,14-0,5 R - Crimp contact



1013778

<https://www.phoenixcontact.com/us/products/1013778>

Accessories

CRIMPFOX-P CC 0.75 L - Crimping pliers

1064998

<https://www.phoenixcontact.com/us/products/1064998>

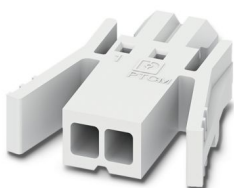


Crimping pliers, for COMBICON crimp connectors with cross section: 0.14 ... 0.75 mm². Unlockable pressure lock, precise parallel crimping, front entry, B crimp, incl. 2 positioning aids

PTCM 0,5/ 2-PL-2,5 WH - PCB connectors

1015464

<https://www.phoenixcontact.com/us/products/1015464>



PCB connector, nominal cross section: 0.75 mm², color: white, nominal current: 6 A, rated voltage (III/2): 160 V, contact surface: Tin, contact connection type: Socket, number of potentials: 2, number of rows: 1, number of positions: 2, number of connections: 2, product range: PTCM 0,5/...-PL, pitch: 2.5 mm, connection method: Crimp connection, conductor/PCB connection direction: 0 °, plug-in system: COMBICON PTSM, locking: Snap-in locking, mounting: Self-locking flange, type of packaging: packed in cardboard

PTCM-MP-P 0,14-0,5 R - Crimp contact



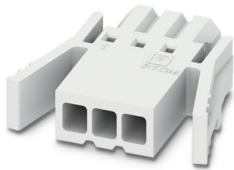
1013778

<https://www.phoenixcontact.com/us/products/1013778>

PTCM 0,5/ 3-PL-2,5 WH - PCB connectors

1015463

<https://www.phoenixcontact.com/us/products/1015463>

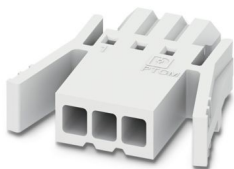


PCB connector, nominal cross section: 0.75 mm^2 , color: white, nominal current: 6 A, rated voltage (III/2): 160 V, contact surface: Tin, contact connection type: Socket, number of potentials: 3, number of rows: 1, number of positions: 3, number of connections: 3, product range: PTCM 0,5/...-PL, pitch: 2.5 mm, connection method: Crimp connection, conductor/PCB connection direction: 0° , plug-in system: COMBICON PTSM, locking: Snap-in locking, mounting: Self-locking flange, type of packaging: packed in cardboard

PTCM 0,5/ 4-PL-2,5 WH - PCB connectors

1015462

<https://www.phoenixcontact.com/us/products/1015462>



PCB connector, nominal cross section: 0.75 mm^2 , color: white, nominal current: 6 A, rated voltage (III/2): 160 V, contact surface: Tin, contact connection type: Socket, number of potentials: 4, number of rows: 1, number of positions: 4, number of connections: 4, product range: PTCM 0,5/...-PL, pitch: 2.5 mm, connection method: Crimp connection, conductor/PCB connection direction: 0° , plug-in system: COMBICON PTSM, locking: Snap-in locking, mounting: Self-locking flange, type of packaging: packed in cardboard

PTCM-MP-P 0,14-0,5 R - Crimp contact



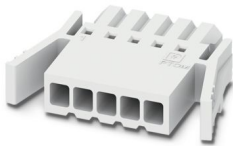
1013778

<https://www.phoenixcontact.com/us/products/1013778>

PTCM 0,5/ 5-PL-2,5 WH - PCB connectors

1015461

<https://www.phoenixcontact.com/us/products/1015461>

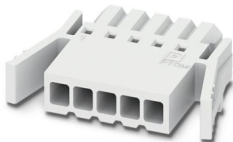


PCB connector, nominal cross section: 0.75 mm^2 , color: white, nominal current: 6 A, rated voltage (III/2): 160 V, contact surface: Tin, contact connection type: Socket, number of potentials: 5, number of rows: 1, number of positions: 5, number of connections: 5, product range: PTCM 0,5/...-PL, pitch: 2.5 mm, connection method: Crimp connection, conductor/PCB connection direction: 0° , plug-in system: COMBICON PTSM, locking: Snap-in locking, mounting: Self-locking flange, type of packaging: packed in cardboard

PTCM 0,5/ 6-PL-2,5 WH - PCB connectors

1015460

<https://www.phoenixcontact.com/us/products/1015460>



PCB connector, nominal cross section: 0.75 mm^2 , color: white, nominal current: 6 A, rated voltage (III/2): 160 V, contact surface: Tin, contact connection type: Socket, number of potentials: 6, number of rows: 1, number of positions: 6, number of connections: 6, product range: PTCM 0,5/...-PL, pitch: 2.5 mm, connection method: Crimp connection, conductor/PCB connection direction: 0° , plug-in system: COMBICON PTSM, locking: Snap-in locking, mounting: Self-locking flange, type of packaging: packed in cardboard

PTCM-MP-P 0,14-0,5 R - Crimp contact



1013778

<https://www.phoenixcontact.com/us/products/1013778>

PTCM 0,5/ 7-PL-2,5 WH - PCB connectors

1015459

<https://www.phoenixcontact.com/us/products/1015459>



PCB connector, nominal cross section: 0.75 mm^2 , color: white, nominal current: 6 A, rated voltage (III/2): 160 V, contact surface: Tin, contact connection type: Socket, number of potentials: 7, number of rows: 1, number of positions: 7, number of connections: 7, product range: PTCM 0,5/...-PL, pitch: 2.5 mm, connection method: Crimp connection, conductor/PCB connection direction: 0° , plug-in system: COMBICON PTSM, locking: Snap-in locking, mounting: Self-locking flange, type of packaging: packed in cardboard

PTCM 0,5/ 8-PL-2,5 WH - PCB connectors

1015458

<https://www.phoenixcontact.com/us/products/1015458>



PCB connector, nominal cross section: 0.75 mm^2 , color: white, nominal current: 6 A, rated voltage (III/2): 160 V, contact surface: Tin, contact connection type: Socket, number of potentials: 8, number of rows: 1, number of positions: 8, number of connections: 8, product range: PTCM 0,5/...-PL, pitch: 2.5 mm, connection method: Crimp connection, conductor/PCB connection direction: 0° , plug-in system: COMBICON PTSM, locking: Snap-in locking, mounting: Self-locking flange, type of packaging: packed in cardboard

PTCM-MP-P 0,14-0,5 R - Crimp contact

1013778

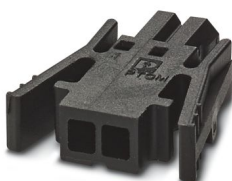
<https://www.phoenixcontact.com/us/products/1013778>



PTCM 0,5/ 2-PL-2,5 BK - PCB connectors

1048116

<https://www.phoenixcontact.com/us/products/1048116>

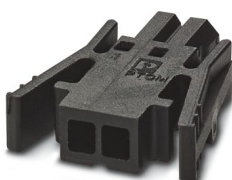


PCB connector, nominal cross section: 0.75 mm^2 , color: black, nominal current: 6 A, rated voltage (III/2): 160 V, contact surface: Tin, contact connection type: Socket, number of rows: 1, number of positions: 2, product range: PTCM 0,5/...-PL, pitch: 2.5 mm, connection method: Crimp connection, conductor/PCB connection direction: 0° , plug-in system: COMBICON PTSM, locking: Snap-in locking, mounting: Self-locking flange, type of packaging: packed in cardboard

PTCM 0,5/ 3-PL-2,5 BK - PCB connectors

1048117

<https://www.phoenixcontact.com/us/products/1048117>



PCB connector, nominal cross section: 0.75 mm^2 , color: black, nominal current: 6 A, rated voltage (III/2): 160 V, contact surface: Tin, contact connection type: Socket, number of rows: 1, number of positions: 3, product range: PTCM 0,5/...-PL, pitch: 2.5 mm, connection method: Crimp connection, conductor/PCB connection direction: 0° , plug-in system: COMBICON PTSM, locking: Snap-in locking, mounting: Self-locking flange, type of packaging: packed in cardboard

PTCM-MP-P 0,14-0,5 R - Crimp contact



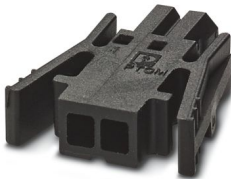
1013778

<https://www.phoenixcontact.com/us/products/1013778>

PTCM 0,5/ 4-PL-2,5 BK - PCB connectors

1048118

<https://www.phoenixcontact.com/us/products/1048118>

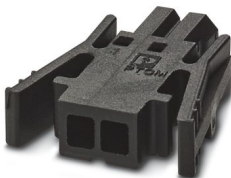


PCB connector, nominal cross section: 0.75 mm², color: black, nominal current: 6 A, rated voltage (III/2): 160 V, contact surface: Tin, contact connection type: Socket, number of rows: 1, number of positions: 4, product range: PTCM 0,5/...-PL, pitch: 2.5 mm, connection method: Crimp connection, conductor/PCB connection direction: 0 °, plug-in system: COMBICON PTSM, locking: Snap-in locking, mounting: Self-locking flange, type of packaging: packed in cardboard

PTCM 0,5/ 5-PL-2,5 BK - PCB connectors

1048119

<https://www.phoenixcontact.com/us/products/1048119>



PCB connector, nominal cross section: 0.75 mm², color: black, nominal current: 6 A, rated voltage (III/2): 160 V, contact surface: Tin, contact connection type: Socket, number of potentials: 5, number of rows: 1, number of positions: 5, number of connections: 5, product range: PTCM 0,5/...-PL, pitch: 2.5 mm, connection method: Crimp connection, conductor/PCB connection direction: 0 °, plug-in system: COMBICON PTSM, locking: Snap-in locking, mounting: Self-locking flange, type of packaging: packed in cardboard

PTCM-MP-P 0,14-0,5 R - Crimp contact



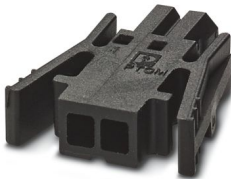
1013778

<https://www.phoenixcontact.com/us/products/1013778>

PTCM 0,5/ 6-PL-2,5 BK - PCB connectors

1048121

<https://www.phoenixcontact.com/us/products/1048121>

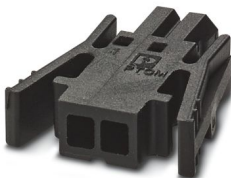


PCB connector, nominal cross section: 0.75 mm^2 , color: black, nominal current: 6 A, rated voltage (III/2): 160 V, contact surface: Tin, contact connection type: Socket, number of potentials: 6, number of rows: 1, number of positions: 6, number of connections: 6, product range: PTCM 0,5/...-PL, pitch: 2.5 mm, connection method: Crimp connection, conductor/PCB connection direction: 0° , plug-in system: COMBICON PTSM, locking: Snap-in locking, mounting: Self-locking flange, type of packaging: packed in cardboard

PTCM 0,5/ 7-PL-2,5 BK - PCB connectors

1048122

<https://www.phoenixcontact.com/us/products/1048122>



PCB connector, nominal cross section: 0.75 mm^2 , color: black, nominal current: 6 A, rated voltage (III/2): 160 V, contact surface: Tin, contact connection type: Socket, number of potentials: 7, number of rows: 1, number of positions: 7, number of connections: 7, product range: PTCM 0,5/...-PL, pitch: 2.5 mm, connection method: Crimp connection, conductor/PCB connection direction: 0° , plug-in system: COMBICON PTSM, locking: Snap-in locking, mounting: Self-locking flange, type of packaging: packed in cardboard

PTCM-MP-P 0,14-0,5 R - Crimp contact

1013778

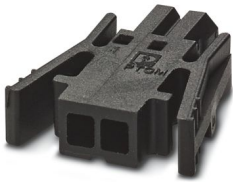
<https://www.phoenixcontact.com/us/products/1013778>



PTCM 0,5/ 8-PL-2,5 BK - PCB connectors

1048123

<https://www.phoenixcontact.com/us/products/1048123>



PCB connector, nominal cross section: 0.75 mm², color: black, nominal current: 6 A, rated voltage (III/2): 160 V, contact surface: Tin, contact connection type: Socket, number of potentials: 8, number of rows: 1, number of positions: 8, number of connections: 8, product range: PTCM 0,5/...-PL, pitch: 2.5 mm, connection method: Crimp connection, conductor/PCB connection direction: 0 °, plug-in system: COMBICON PTSM, locking: Snap-in locking, mounting: Self-locking flange, type of packaging: packed in cardboard

Phoenix Contact 2024 © - all rights reserved

<https://www.phoenixcontact.com>

Phoenix Contact USA
586 Fulling Mill Road
Middletown, PA 17057, United States
(+717) 944-1300
info@phoenixcon.com