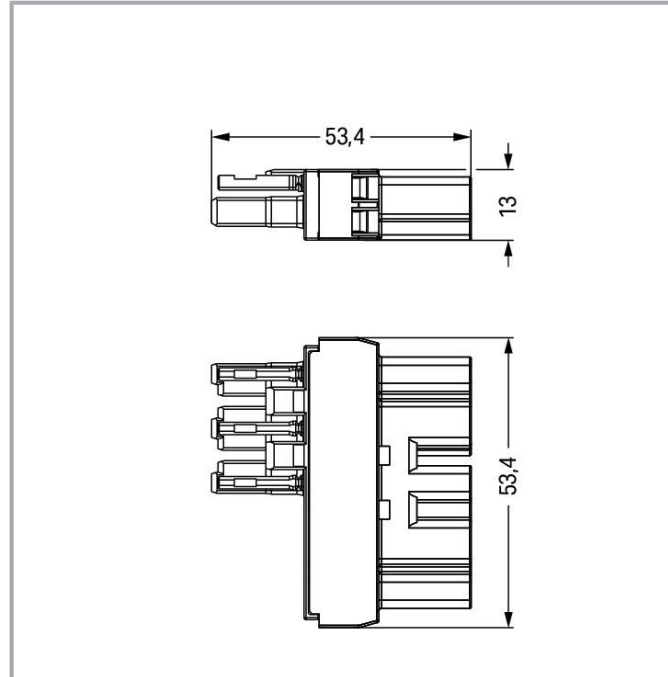
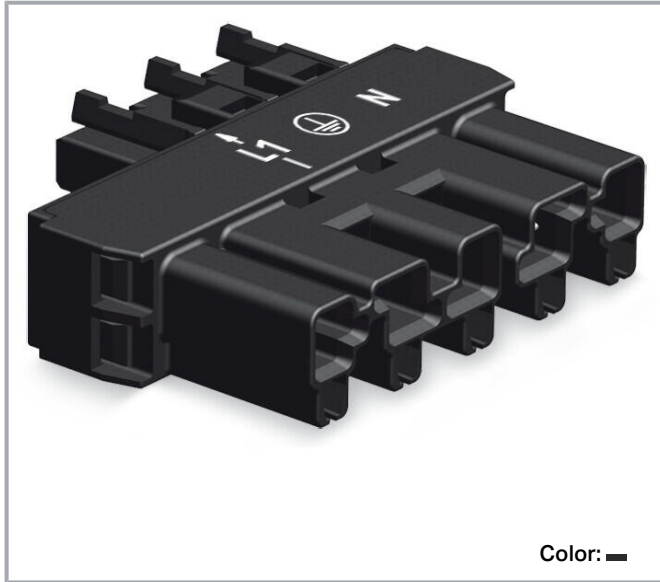


## Data sheet | Item number: 770-901

Intermediate coupler; 5-pole/3-pole; Cod. A; L1 - L; black

[www.wago.com/770-901](http://www.wago.com/770-901)



### Item description

#### Distribution connector *WINSTA*® MIDI with protection type IP20

The *WINSTA*® MIDI distribution connector with locking latch supports fast, reliable installation. On PCBs, in control cabinets or for connecting lights – pluggable installation connectors from WAGO allow you to establish connections according to an enormous variety of requirements in seconds. For greater security in electrical installations, the pluggable installation connector is provided with mechanical protection against mismatching. The pluggable installation connector offers touch-proof protection with live components in accordance with protection type IP20 (When mated: IP2xC (These compact connectors are not designed for use in open, easily accessible areas!)). Standard mains applications for almost any domain of use can be implemented with *WINSTA*® MIDI pluggable installation connectors with A coding. This pluggable installation connector can be used for a current load of up to 25 A. Therefore, it can also be used for high power loads. *WINSTA*® MIDI with Push-in CAGE CLAMP® spring pressure connection technology is found in can be found in a variety of projects you can use for quick, easy, secure, tailored installation.

Subject to changes. Please also observe the further product documentation!

WAGO GmbH & Co. KG  
Hansastr. 27  
32423 Minden  
Phone: +49571 887-0 | Fax: +49571 887-169  
Email: [info.de@wago.com](mailto:info.de@wago.com) | Web: [www.wago.com](http://www.wago.com)

Do you have any questions about our products?  
We are always happy to take your call at +49 (571) 887-44222.



## Push-in CAGE CLAMP® spring pressure connection technology – pluggable installation instead of laborious screw connections!

The WINSTA® Pluggable Connection System is perfectly tailored to the very strict requirements of building installation. It makes electrical installation pluggable, and therefore more efficient, even more reliable, and error-free. Using this pre-assembled system decreases time spent on assembly and errors during installation at the construction site. Choose quality and durability – with marking from WAGO makes the installation of electrical components visibly easier.

- 
- pluggable installation connectors with protection against mismatching
- simple circuits
- for any mains application
- flexible installation to save space
- quick replacement of defective units during ongoing operation

### Data Electrical data

#### Ratings per IEC/EN

| Ratings per                   | IEC/EN 60664-1  |
|-------------------------------|---|
| Nominal voltage (III/3)       | 400 V   |
| Rated impulse voltage (III/3) | 6 kV  |
| Rated current                 | 25 A  |
| Legend (ratings)              | (III / 3) ≙ Overvoltage category III / Pollution degree 3 |

#### Ratings per IEC/EN 2

|                               |       |
|-------------------------------|-------|
| Rated voltage (III/3) 2       | 250 V |
| Rated surge voltage (III/3) 2 | 4 kV  |

#### Ratings per UL 1977

|                         |  |
|-------------------------|--|
| Note for the US market  | Some versions may also be used for current interruption in accordance with the UL certificate in select applications with currents below 16 A and voltages up to 600 V. For further information, please contact your local sales office. |
| Rated voltage (UL 1977) | 600 V  |
| Rated current UL 1977   | 23 A   |

Subject to changes. Please also observe the further product documentation!



## General information

|                            |  |
|----------------------------|--|
| Note on contact resistance | approx. 1 mΩ of contact resistance<br>approx. 0.25 mΩ contact transition plug/socket |
|----------------------------|--|

## Connection data

|                            |   |
|----------------------------|---|
| Total number of potentials | 5 |
|----------------------------|---|

## Connection 1

|             |   |
|-------------|---|
| Pole number | 5 |
|-------------|---|

## Physical data

|             |                        |
|-------------|------------------------|
| Pin spacing | 10 mm / 0.394 inches   |
| Width       | 53.4 mm / 2.102 inches |
| Height      | 13 mm / 0.512 inches   |
| Depth       | 53.4 mm / 2.102 inches |

## Mechanical data

|   |   |
|---|---|
| Application                             | General mains applications  |
| Coding                                  | A   |
| Variable coding                         | Yes   |
| Marking                                 | L1 - L $\neq$ N   |
| Mating force of a plug-in connection    | approx. 20 ... 70 N (depending on pole number)  |
| Retention force of a plug-in connection | When locked: > 80 N   |
| Unmating force of a plug-in connection  | Unlocked: approx. 20 ... 70 N (depending on pole number)  |
| Number of mating cycles                 | 200, without resistive load   |
| Type of distribution box                | Intermediate coupler  |
| Protection type                         | IP20; When mated: IP2xC (These compact connectors are not designed for use in open, easily accessible areas!) |
| Suitable                                | 5- to 3-pole; L1 - L  |

## Plug-in connection

|                                    |   |
|------------------------------------|---|
| Contact type (pluggable connector) | Socket/plug   |
| Mismating protection               | Yes   |
| Note on mismating protection       | All <i>WINSTA</i> <sup>®</sup> components are 100% protected against mismating when:<br>a.) plugging different numbers of poles |

Subject to changes. Please also observe the further product documentation!



|                               |  |
|-------------------------------|--|
|                               | b.) plugging while rotated 180<br>c.) plugging while laterally staggered<br>d.) plugging one pole  |
| Locking lever                 | yes  |
| Locking of plug-in connection | locking lever  |
| Note on locking system        | All connectors for mounted installations (snap-in versions for lighting fixtures or devices, all types of PCB and distribution connectors) are factory-equipped with locking levers to ensure plugs and sockets are securely locked. Additional locking levers are only required for flying leads (plug/socket). |

## Material data

|                             |  |
|-----------------------------|--|
| Note (material data)        | Information on material specifications can be found here |
| Color                       | black  |
| Insulation material         | Polyamide (PA66)   |
| Flammability class per UL94 | V0   |
| Contact material            | Copper or copper alloy; surface-treated                  |
| Contact plating             | Tin  |
| Fire load                   | 0.411 MJ   |
| Weight                      | 15.3 g   |

## Environmental requirements

|  |  |
|--|--|
| Processing temperature                   | -5 ... +40 °C                              |
| Continuous operating temperature         | -35 ... +85 °C                             |
| Note on continuous operating temperature | Insulating parts for temperatures ≤ 105 °C |

## Commercial data

|                   |               |
|-------------------|---------------|
| Product Group     | 20 (Winsta)   |
| eCl@ss 10.0       | 27-44-06-03   |
| eCl@ss 9.0        | 27-44-06-03   |
| ETIM 8.0          | EC002567      |
| ETIM 7.0          | EC002567      |
| ECCN              | NO DATA       |
| PU (SPU)          | 50 pcs        |
| Packaging type    | box           |
| Country of origin | DE            |
| GTIN              | 4045454424626 |

Subject to changes. Please also observe the further product documentation!


Customs tariff number 85366990990

## Environmental Product Compliance

RoHS Compliance Status Compliant, No Exemption




## Approvals / Certificates

### General approvals

| Logo   | Approval                                | Additional Approval Text | Certificate name |
|--|---|--------------------------|------------------|
|  | cURus<br>Underwriters Laboratories Inc. | UL 1059                  | E 45172          |

## Optional accessories

### Cover

|  |   |  |
|--|---|--|
|   | Item no.: 770-360<br>Lockout cap; for plugs; 5-pole; separable; yellow            | <a href="http://www.wago.com/770-360">www.wago.com/770-360</a> |
|  | Item no.: 770-201<br>Lockout cap; 12-pole, separable; for sockets; Plastic; black | <a href="http://www.wago.com/770-201">www.wago.com/770-201</a> |
|  | Item no.: 770-221<br>Lockout cap; 12-pole, separable; for sockets; Plastic; white | <a href="http://www.wago.com/770-221">www.wago.com/770-221</a> |

## Downloads

### Documentation

#### Bid Text

|                        |               |                |          |
|------------------------|---------------|----------------|----------|
| 770-901<br>X81 - Datei | 2019 年2月19 日  | xml<br>2.7 kB  | Download |
| 770-901<br>doc - Datei | 2014 年12月10 日 | doc<br>23.6 kB | Download |

## CAD/CAE-Data

Subject to changes. Please also observe the further product documentation!

WAGO GmbH & Co. KG  
Hansastr. 27  
32423 Minden  
Phone: +49571 887-0 | Fax: +49571 887-169  
Email: [info.de@wago.com](mailto:info.de@wago.com) | Web: [www.wago.com](http://www.wago.com)

Do you have any questions about our products?  
We are always happy to take your call at +49 (571) 887-44222.



CAE data

|                           |     |          |
|---------------------------|-----|----------|
| EPLAN Data Portal 770-901 | URL | Download |
| WSCAD Universe 770-901    | URL | Download |
| ZUKEN Portal 770-901      | URL | Download |

CAD data

|                      |     |          |
|----------------------|-----|----------|
| 2D/3D Models 770-901 | URL | Download |
|----------------------|-----|----------|

Asset Administration Shell

|                                    |     |          |
|------------------------------------|-----|----------|
| Asset Administration Shell 770-901 | URL | Download |
|------------------------------------|-----|----------|

Environmental Product Compliance

Compliance Search

|  |     |          |
|--|-----|----------|
| Environmental Product Compliance 770-901                   | URL | Download |
| Intermediate coupler; 5-pole/3-pole; Cod. A; L1 - L; black |     |          |

Installation Notes

Product family

WINSTA® MIDI  
[Show all products from the family](#)

Subject to changes. Please also observe the further product documentation!