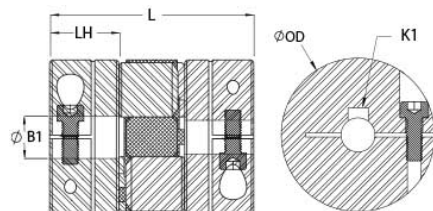




MJCC57-22-A


Ruland MJCC57-22-A, 22mm Jaw Coupling Hub, Aluminum, Clamp Style With Keyway, 57.2mm OD, 28.7mm Length



Description

Ruland MJCC57-22-A is a clamp zero-backlash jaw coupling hub with a 22mm bore, 6mm keyway, 57.2mm OD, and 28.7mm length. It is a component in a three-piece design consisting of two aluminum hubs and an elastomeric insert called the spider creating a lightweight low inertia coupling capable of speeds up to 8,000 RPM. This three-piece design allows for a highly customizable coupling that easily combines clamp or set screw hubs with inch, metric, keyed, and keyless bores. Spiders are available in three durometers allowing the user to tailor coupling performance to their application. Ruland jaw couplings have a balanced design for reduced vibration at high speeds. Hardware is metric and tests beyond DIN 912 12.9 standards for maximum torque capabilities. MJCC57-22-A is machined from bar stock that is sourced exclusively from North American mills and is RoHS3 and REACH compliant. It is manufactured in our Marlborough, MA factory under strict controls using proprietary processes.

Product Specifications

Bore (B1)	22 mm	Keyway (K)	6 mm
B1 Max Shaft Penetration	28.7 mm	Outer Diameter (OD)	2.250 in (57.2 mm)
Bore Tolerance	+0.03 mm / -0.00 mm	Hub Width (LH)	28.70 mm
Length (L)	3.150 in (80.0 mm)	Recommended Shaft Tolerance	+0.000 mm / -0.013 mm
Forged Clamp Screw	M6	Number of Screws	1 ea
Screw Material	Alloy Steel	Screw Finish	Black Oxide
Hex Wrench Size	5.0 mm	Seating Torque	16 Nm
Torque Specifications	Torque ratings vary with insert selection	Misalignment	Misalignment ratings vary with insert selection
Maximum Speed	8,000 RPM	Moment of Inertia	$9.225 \times 10^{-5} \text{ kg-m}^2$
Full Bearing Support Required?	Yes	Recommended Inserts	JD36/57-98R , JD36/57-92Y
Zero-Backlash?	Yes	Balanced Design	Yes
Fail Safe?	Yes	Weight (lbs)	0.418100
Temperature	-10°F to 180°F (-23°C to 82°C)	Material Specification	2024-T351 Aluminum Bar
Finish	Bright	Finish Specification	Bright, No Plating
Manufacturer	Ruland Manufacturing	Recommended Gap Between Hubs	0.050 in (1.25 mm)
Country of Origin	USA	UPC	634529111000
UNSPC	31163011	Tariff Code	8483.60.8000
Note 1	Stainless steel hubs are available upon request.		
Note 2	Performance ratings are for guidance only. The user must determine suitability for a particular application.		
Note 3	Torque ratings for the couplings are based on the physical limitations/failure point of the spiders. Under normal/typical conditions the hubs are capable of holding up to the nominal torque of the spiders. Please consult technical support for more assistance.		
Prop 65	 WARNING This product can expose you to the chemical Ethylene Thiourea		

Installation Instructions

1. Align the bores of the MJCC57-22-A jaw coupling hubs on the shafts that are to be joined and determine if the misalignment parameters are within the limits of the coupling. (See spider for misalignment parameters.)
2. Fully tighten the M6 screw(s) on the first hub to the recommended seating torque of 16 Nm using a 5.0 mm hex torque wrench.
3. Insert a spider into the jaws of one hub until the raised points contact the base of the hub.

4. Insert the jaws of the second hub into the spider openings until the raised points contact the base of the second hub. Some force will be required to insert the second hub. This is normal.
 5. Assure that a gap is maintained between the two hubs so there is no metal to metal contact. Fully tighten the screw(s) on the second hub to the recommended seating torque.
-