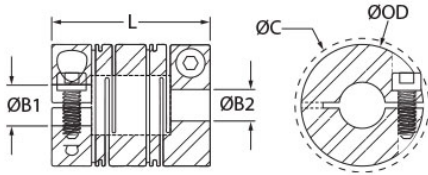




RLC16-5-5-A

Ruland RLC16-5-5-A, 0.313" x 0.313" Long Slit Coupling, Aluminum, Clamp Style, 0.984" OD, 1.339" length




Description

Ruland RLC16-5-5-A is a clamp style slit coupling with 0.3125" x 0.3125" bores, 0.984" OD, and 1.339" length. It is manufactured from a single piece of material and has two sets of intermittent slit cuts allowing for a maintenance-free coupling with high torsional stiffness in relation to comparable couplings, such as beam type. RLC16-5-5-A is commonly used in precise positioning applications found in semiconductor, medical, and test and measurement equipment. This long style slit coupling has added torque and misalignment capabilities compared to the short style. RLC16-5-5-A is zero-backlash, has a balanced design for reduced vibration at speeds up to 10,000 RPM, and can accommodate all forms of misalignment with light bearing loads. It is manufactured by Reliance Precision Ltd. in their County Cork, Ireland factory from 7075 aluminum for lightweight and low inertia. RLC16-5-5-A is inventoried by Ruland and RoHS3 and REACH compliant.

Product Specifications

Bore (B1)	0.3125 in	Small Bore (B2)	0.3125 in
B1 Max Shaft Penetration	0.378 in	B2 Max Shaft Penetration	0.378 in
Outer Diameter (OD)	0.984 in	Bore Tolerance	+0.001 in / -0.000 in
Length (L)	1.339 in	Clearance Diameter (C) MAX	1.059 in
Cap Screw	M3	Screw Material	18-8 300 Series Stainless Steel
Hex Wrench Size	2.5 mm	Screw Finish	Bright
Seating Torque	1.10 Nm	Number of Screws	2
Dynamic Torque Reversing	13.7 lb-in	Angular Misalignment	3.0°
Dynamic Torque Non-Reversing	20.8 lb-in	Parallel Misalignment	0.016 in
Peak Torque	34.5 in-lb	Axial Motion	0.028 in
Torsional Stiffness	34.5 lb-in/Deg	Moment of Inertia	0.0106969 lb-in ²
Maximum Speed	5,000 RPM	Full Bearing Support Required?	Yes
Zero-Backlash?	Yes	Balanced Design	Yes
Material Specification	7075-T651 Extruded and Drawn Aluminum Bar	Temperature	-110°F to 175°F (-80°C to 80°C)
Finish Specification	SurTec 650	Manufacturer	Reliance Precision Limited
Country of Origin	Ireland	Weight (lbs)	0.079200
UPC	634529301524	Tariff Code	8483.60.8000
UNSPC	31163003		
Note 1	Performance ratings are for guidance only. The user must determine suitability for a particular application.		
Prop 65			

 **WARNING** This product can expose you to the chemical Nickel (metallic), known to the State of California to cause cancer. For more information go to www.P65Warnings.ca.gov.