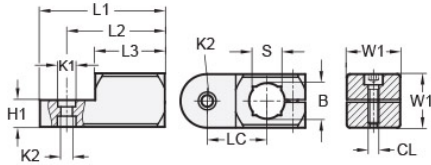
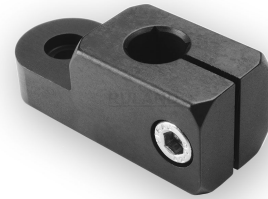




MT8-CCSWV-16-AN

Ruland Swivel Clamp Joint, Swivel Thru Hole 4.5mm, Clamp Width 16mm, Thru Hole 8mm, Clamp Screw M4, L 40mm, Black Anodized Aluminum




Description

Ruland MT8-CCSWV-16-AN is a swivel clamp joint with a thru hole for 8mm round tube, M4 clamp screw, 8mm base height, 16mm width and height, and 40mm overall length. It is designed to fit with MT8 swivel clamp bases, MT8 clamp connectors and mounting blocks, and MT8 round tubes. When combined with a swivel bases or attachment clamp joints, it is an ideal articulating mounting solution for screens, sensors, reflectors, plexiglass machine guards, and other components that require frequent adjustments. The vertical bore is parallel to the swivel axis. An MT8-SWALKS-M4-16 adjustable clamping handle can be used to join it to other Ruland swivel components or tubes for rapid repositioning without the use of tools. This part is aluminum with a black anodized finish for added corrosion resistance when compared to unplated types. MT8-CCSWV-16-AN is manufactured by Otto Ganter, inventoried by Ruland, and RoHS3 compliant.

Product Specifications

Thru Hole Diameter B	8 mm	Thru Hole Tolerance	+0.09/-0 mm
Counterbore 1 Diameter K1	7 mm	Counterbore 2 Diameter K2	4.5 mm
Clamp Screw CL	M4	Overall Length L1	40 mm
Hub Length LH	23 mm	Edge To Center Of Counterbore L2	32 mm
Center To Center LC	18.5 mm	Width & Height W1	16 mm
Base Height H1	8 mm	Material Specification	Anodized Aluminum
Manufacturer	JW Winco/ Otto Ganter	Country of Origin	Germany
Weight (lbs)	0.041500	UPC	634529230565
Tariff Code	7609.00.0000	UNSPC	31162908

Note 1	Performance ratings are for guidance only. The user must determine suitability for a particular application.
Prop 65	 WARNING This product can expose you to the chemical Nickel (metallic), known to the State of California to cause cancer. For more information go to www.P65Warnings.ca.gov .