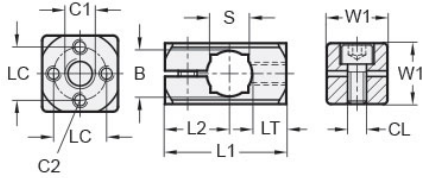




MT16-CSBC-M6-AN


Ruland Sensor Bracket Clamp Connector, Thru Hole 16mm, Thread M6, L 40mm, Black Anodized Aluminum



Description

Ruland MT16-CSBC-M6-AN is a cross pattern sensor bracket clamp connector that attaches to a 16mm round tube and has an M6 center tapped hole, M4 tapped holes in the cross, a 20mm width and height, and a 40mm overall length. It is designed to fit on Ruland tubes and flange bolt bases that begin with MT16. MT16-CSBC-M6-AN is aluminum with a black anodized finish and screws are 304 stainless steel for added corrosion resistance when compared to unplated types. This bracket clamp is used to support brackets for mounting sensors, screens, reflectors, plexiglass machine guards, and other industrial components. It has a cross pattern allowing the user to mount with a single M6 screw through the center of the bracket or with multiple M4 screws in the arms of the cross. The use of a cross pattern prevents the bracket from rotating if the mounted component has high mass or will have force applied to it such as a screen. An MT15:16:20-ALK-M6-25 adjustable clamping handle can be used to rapidly reposition MT16-CSBC-M6-AN or the tube it is attached to without the use of tools. MT16-CSBC-M6-AN is manufactured by Otto Ganter, inventoried by Ruland, and RoHS3 compliant.

Product Specifications

Thru Hole Diameter B	16 mm	Thru Hole Tolerance	+0.11/-0 mm
Center Thread C1	M6	Cross Thread C2	M4 x 4
Thread Depth LT	11.5 mm	Center To Center LC	14 mm
Edge To Center L2	20.5 mm	Width & Height W1	20 mm
Overall Length L1	40 mm	Clamp Screw CL	M6
Weight (lbs)	0.071100	Material Specification	Anodized Aluminum
Manufacturer	JW Winco/ Otto Ganter	UPC	634529230664
Country of Origin	Germany	Tariff Code	7609.00.0000
UNSPC	31162908		
Note 1	Performance ratings are for guidance only. The user must determine suitability for a particular application.		
Prop 65	 WARNING This product can expose you to the chemical Nickel (metallic), known to the State of California to cause cancer. For more information go to www.P65Warnings.ca.gov .		