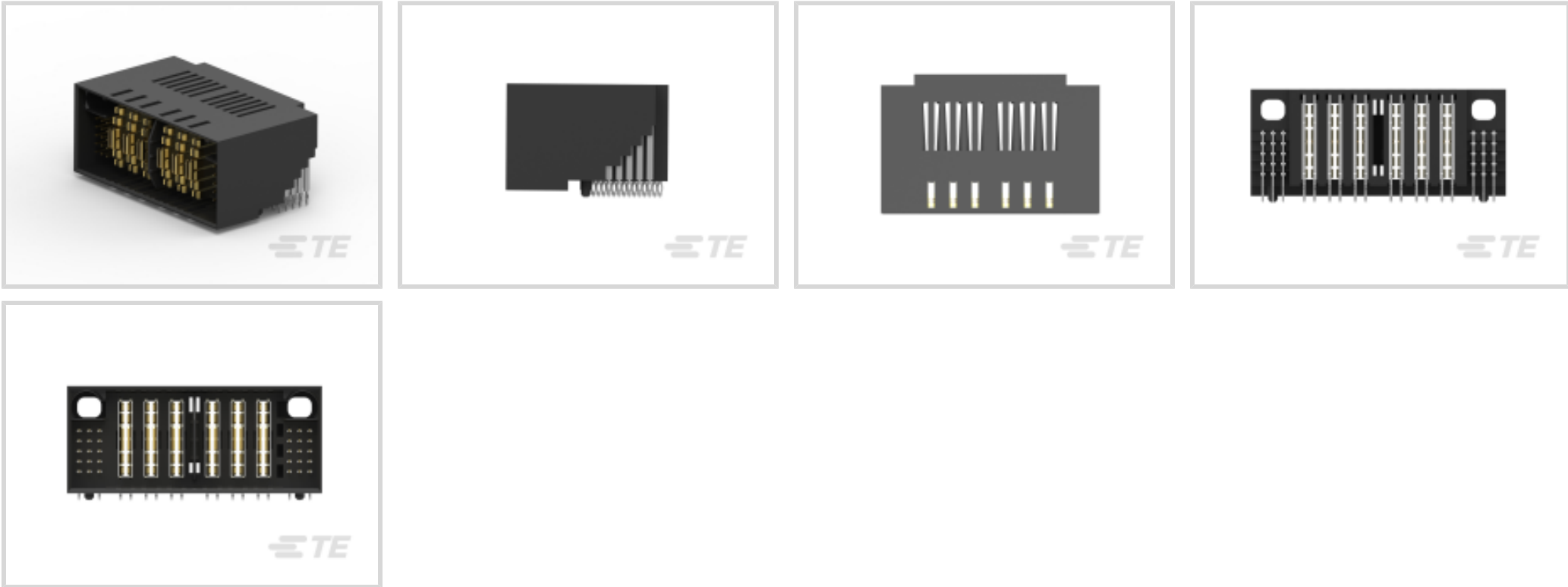




Connectors > Power Connectors > Rectangular Power > Rectangular Power Connectors



Rectangular Power Connector Type: **Header**

Connector & Housing Type: **Plug**

Connector System: **Board-to-Board**

Number of Positions: **36**

Centerline (Pitch): **2 mm, 5 mm [ .078 in, .196 in ]**

Features

Product Type Features

Header Type	Fully Shrouded
Rectangular Power Connector Type	Header
Connector & Housing Type	Plug
Connector System	Board-to-Board
Sealable	No
Connector & Contact Terminates To	Printed Circuit Board

Configuration Features

Number of Positions by Circuit Application	6P/Power, 30/Signal
Number of Positions	36
PCB Mount Orientation	Right Angle
Number of Power Positions	6
Number of Signal Positions	30
Number of Rows	5

Electrical Characteristics



Operating Voltage	60 VDC
-------------------	--------

Contact Features

Contact Mating Area Plating Material	Gold Flash over Palladium Nickel
Contact Underplating Material	Nickel
Contact Current Rating (Max)	558 A
Contact Retention Within Housing	Without
Contact Type	Blade, Pin
PCB Contact Termination Area Plating Material	Tin
Contact Mating Area Plating Material Thickness	.076 µm[3 µin]

Termination Features

Termination Post & Tail Length	3.2 mm
Termination Method to Printed Circuit Board	Through Hole - Press-Fit

Mechanical Attachment

Connector Mounting Type	Board Mount
-------------------------	-------------

Housing Features

Centerline (Pitch)	2 mm, 5 mm [.078 in][.196 in]
Housing Color	Black
Housing Material	High Temperature Thermoplastic

Dimensions

Row-to-Row Spacing	2 mm [.079 in]
--------------------	----------------

Usage Conditions

Operating Temperature Range	-40 – 125 °C[-40 – 257 °F]
-----------------------------	----------------------------

Operation/Application

Circuit Application	Power & Signal
---------------------	----------------

Industry Standards

UL Flammability Rating	UL 94V-0
Glow Wire Rating	High Temperature Part - Not Glow Wire

Packaging Features

Packaging Method	Box & Tray
------------------	------------

Product Compliance

For compliance documentation, visit the product page on TE.com>



EU RoHS Directive 2011/65/EU	Compliant
EU ELV Directive 2000/53/EC	Compliant
China RoHS 2 Directive MIIT Order No 32, 2016	No Restricted Materials Above Threshold
EU REACH Regulation (EC) No. 1907/2006	Current ECHA Candidate List: JAN 2024 (240) Candidate List Declared Against: JAN 2024 (240) Does not contain REACH SVHC
Halogen Content	Low Halogen - Br, Cl, F, I < 900 ppm per homogenous material. Also BFR/CFR/PVC Free
Solder Process Capability	Not reviewed for solder process capability

Product Compliance Disclaimer

This information is provided based on reasonable inquiry of our suppliers and represents our current actual knowledge based on the information they provided. This information is subject to change. The part numbers that TE has identified as EU RoHS compliant have a maximum concentration of 0.1% by weight in homogenous materials for lead, hexavalent chromium, mercury, PBB, PBDE, DBP, BBP, DEHP, DIBP, and 0.01% for cadmium, or qualify for an exemption to these limits as defined in the Annexes of Directive 2011/65/EU (RoHS2). Finished electrical and electronic equipment products will be CE marked as required by Directive 2011/65/EU. Components may not be CE marked. Additionally, the part numbers that TE has identified as EU ELV compliant have a maximum concentration of 0.1% by weight in homogenous materials for lead, hexavalent chromium, and mercury, and 0.01% for cadmium, or qualify for an exemption to these limits as defined in the Annexes of Directive 2000/53/EC (ELV). Regarding the REACH Regulation, the information TE provides on SVHC in articles for this part number is based on the latest European Chemicals Agency (ECHA) 'Guidance on requirements for substances in articles' posted at this URL: <https://echa.europa.eu/guidance-documents/guidance-on-reach>

Compatible Parts



TE Part # 2204420-9  
MULTI-BEAM HD VERTICAL REC.  
15S+3P+3P+15

Also in the Series | MULTI-BEAM HD



Rectangular Power Connectors(46)

Customers Also Bought



TE Part #4-2176305-7  
RP 1E 0.1W 324R 0.1% 25PPM 5K RL



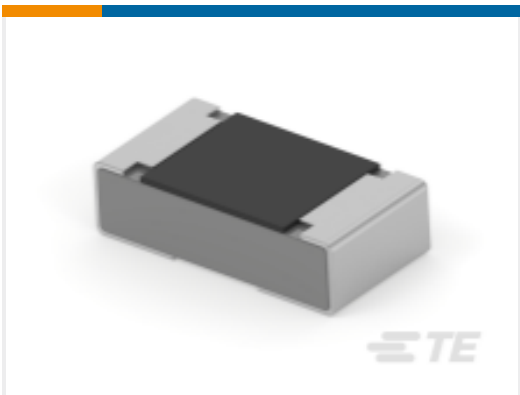
TE Part #2176378-2  
RQ 0805 10R2 0.1% 10PPM 5K RL



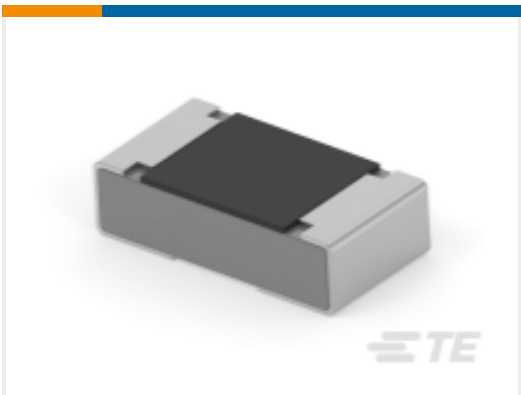
TE Part #2204420-9  
MULTI-BEAM HD VERTICAL REC.  
15S+3P+3P+15



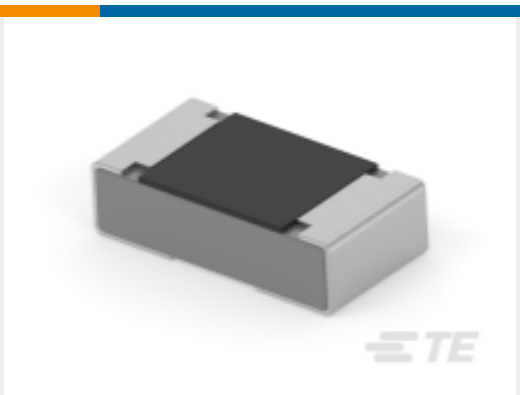
TE Part #4-2176481-1  
RA73F 1J 15K4 0.1% 5K RL



TE Part #6-2176481-3  
RA73F 1J 26K1 0.1% 5K RL



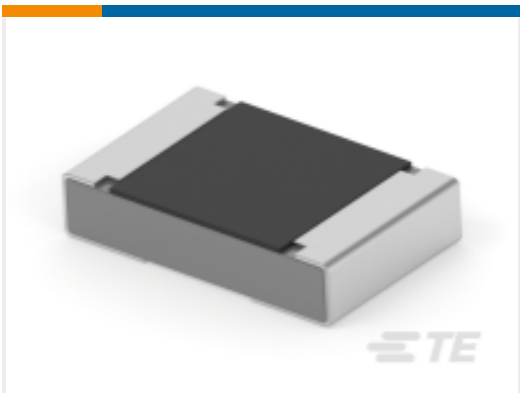
TE Part #6-2176481-8  
RA73F 1J 29K4 0.1% 5K RL



TE Part #7-2176480-9  
RA73F 1J 3K57 0.1% 5K RL



TE Part #2-2176484-4  
RA73F 2A 10K2 0.1% 5K RL



TE Part #6-2176483-2  
RA73F 2A 2K37 0.1% 5K RL

Documents

Product Drawings

MULTI-BEAM HD R/A PLUG 15S+3P+3P+15S

English

CAD Files

3D PDF

3D

Customer View Model

ENG\_CVM\_CVM\_2204440-8\_A.2d\_dxf.zip



English

Customer View Model

[ENG\\_CVM\\_CVM\\_2204440-8\\_A.3d\\_igs.zip](#)

English

Customer View Model

[ENG\\_CVM\\_CVM\\_2204440-8\\_A.3d\\_stp.zip](#)

English

By downloading the CAD file I accept and agree to the [Terms and Conditions](#) of use.

Product Specifications

[Application Specification](#)

English

Agency Approvals

[UL](#)

English