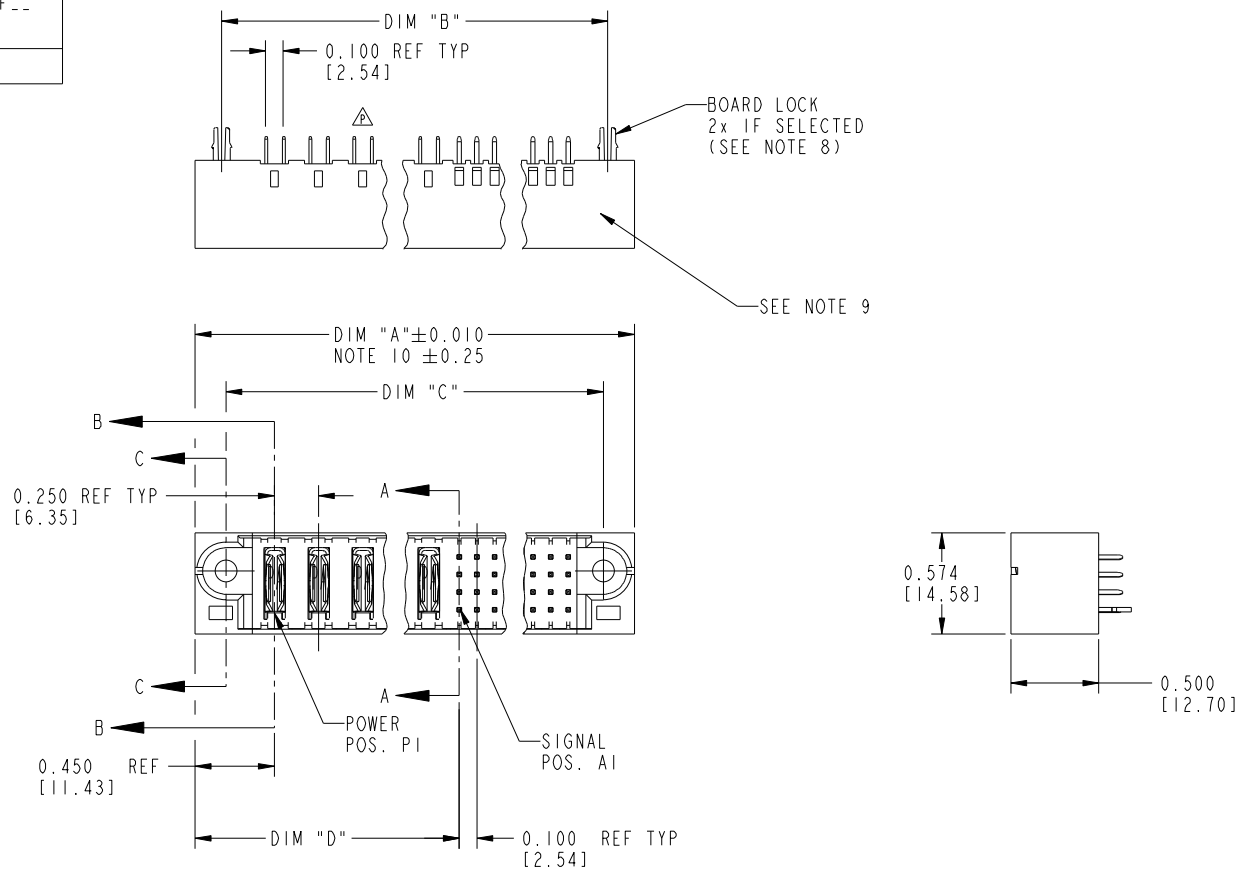




All rights strictly reserved. Reproduction or issue to third parties in any form whatever is not permitted without written authority from the proprietor. Property of FCI. Copyright FCI.

Tous droits strictement réservés. Reproduction ou communication à des tiers interdite sous quelque forme que ce soit sans autorisation écrite du propriétaire. Propriété de c FCI. Droits de reproduction FCI.

PRODUCT NUMBER
51702-ABBCCC00EF--
Note: ①
SEE NOTE 1



mat'l code				NOTE 2		tolerances unless otherwise specified		CUSTOMER		FCI	
ltr	ecn no.	dr	date					COPY		www.fciconnect.com	
L	DG05-0132	SJ	05/30/05	linear		.XX±.01/0.X±0.3		projection		title VERTICAL HEADER w/ GUIDE PIN POWER / SIGNAL	
M	DG06-0505	CS	01/13/05			.XXX±.005/0.XX±0.13				product family PWRBLADE code 213	
N	DG08-0239	JC	09/03/08	angles		.XXX±.0020/.XXX±.051					
P	DG10-0078	AL	02/23/10	dr	JRW	10-16-01		INCH/MM		size dwg no 51702 sheet 1 of 3	
				enrg	J. ALLISON	10-16-01		scale 1:1		A	
				chr	J. ALLISON	10-16-01					
				apdd	J. ALLISON	10-16-01					
sheet index	revision sheet	P	P	P							
		I	2	3							

Pro/E

cage code 22526

PDM: Rev: P

STATUS: Released

Printed: Apr 12, 2022

Tous droits strictement réservés. Reproduction ou communication à des tiers interdite sous quelque forme que ce soit sans autorisation écrite du propriétaire.
Propriété de c FCI. Droits de reproduction FCI.



All rights strictly reserved. Reproduction or issue to third parties in any form whatever is not permitted without written authority from the proprietor.
Property of FCI. Copyright FCI.

PRODUCT NUMBER	DIM	LENGTH FORMULAS (SEE NOTE 10)
51702-ABBCCC00EF-- Note: ①	DIM "A"	.250 [6.35] x BB + .100 [2.54] x (CCC/4) + .650 [16.51] (NOTE 10)
SEE NOTE 1	DIM "B"	.250 [6.35] x BB + .100 [2.54] x (CCC/4) + .350 [8.89]
	DIM "C"	.250 [6.35] x BB + .100 [2.54] x (CCC/4) + .300 [7.62]
	DIM "D"	.250 [6.35] x BB + .375 [9.53]
	DIM "F"	.250 [6.35] x BB + .100 [2.54] x (CCC/4) + .680 [17.27]
	DIM "G"	.250 [6.35] x BB + .225 [5.72]

CONNECTOR NOTES

- ① PRODUCT NUMBER CODE:
51702 - A BB CCC 00 E F LF
NO THIS SUFFIX: 100u"/2.54um SnPb ON PCB INTERFACE
ADD THIS SUFFIX: 78u"/2.00um Sn ON PCB INTERFACE
RETENTION TO PCB (NOTE 8)
TAIL OPTIONS (NOTE 7)
ALWAYS "00" (ZERO, ZERO) (NOTE 6)
NUMBER OF SIGNAL CONTACTS (NOTE 5)
NUMBER OF LEFT POWER CONTACTS (NOTE 4)
PLATING (NOTE 3)
BASE NUMBER
- ② HOUSING MATERIAL: UL94 V-0 GLASS FILLED HIGH TEMP THERMO PLASTIC.
SIGNAL CONTACT MATERIAL: COPPER ALLOY
POWER CONTACT MATERIAL: COPPER ALLOY
- ③ PLATING OPTION:
I = SEE PRINT 10064183 FOR PLATING SPEC OF 51702-1BBCCC00EF; 51702-1BBCCC00EFLF.
- ④ LEFT END POWER CONTACTS, 01 TO 20 AVAILABLE.
- ⑤ SIGNAL CONTACT, 004 TO 148 AVAILABLE.
- ⑥ THIS PART NOT AVAILABLE WITH RIGHT SIDE POWER CONTACTS.
- ⑦ TAIL OPTIONS:
A = 0.135 +0.015/-0.010 [3.43 +0.38/-0.25] SOLDER TO BOARD
B = 0.165 +0.015/-0.010 [4.19 +0.38/-0.25] SOLDER TO BOARD
C = 0.165 +0.015/-0.010 [4.19 +0.38/-0.25] PRESS FIT
- ⑧ RETENTION TO PCB OPTIONS:
A = BOARD LOCK (REQUIRES 0.098 +0.002/-0.001 [2.49 +0.05/-0.03] THRU HOLE IN PCB).
(NOT AVAILABLE WITH PRESS FIT)
C = NO RETENTION FEATURE (ALL PRESS FIT).

- ⑨ MANUFACTURE'S NAME, P/N, AND DATE CODE TO APPEAR ON THIS SURFACE.
- ⑩ THE MAXIMUM OVERALL LENGTH (DIM A) OF A PART IS 8.00 [203.2]
- ⑪ PRODUCT SPECIFICATION GS-12-149
12. SEE PWRBLADE VERTICAL HEADER SPECIAL WORKSHEET (91696) FOR MATING LENGTH OPTIONS.
13. DIMENSIONS AND TOLERANCES ARE IN ACCORDANCE WITH ASME Y14.5M, 1994 UNLESS OTHERWISE SPECIFIED.
- PCB NOTES:
14. ALL DIMENSIONS ARE BASIC UNLESS OTHERWISE SPECIFIED.
15. ALL THROUGH HOLES ARE LOCATED WITH A TRUE POSITION OF 0.004 [0.10]
16. ALL HOLE DIAMETERS ARE FINISHED HOLE SIZE.
17. $\varnothing 0.098$ [2.49] THROUGH HOLES ARE UNPLATED
18. $\varnothing 0.0453 \pm 0.0010$ [1.151 ± 0.025] DRILLED HOLES PLATED WITH 0.0003 [0.008] MIN SnPb OVER 0.001 [0.03] TO 0.003 [0.08] Cu PLATING TO ACHIEVE A $\varnothing 0.040 \pm 0.003$ [1.02 ± 0.07] HOLE.
19. FOR PRESS FIT APPLICATION USE FCI CAM TOOL 430169-XXX.
20. A Δ SYMBOL WILL BE NEXT TO ANY DIMENSION, VIEW, OR NOTE WHICH HAS BEEN MODIFIED WITH THE CURRENT DRAWING REVISION.

mal'ti code				NOTE 2		tolerances unless otherwise specified		CUSTOMER		FCI	
litr	ecn no.	dr	date			.XX \pm .01/0.X \pm 0.3		COPY		www.fciconnect.com	
P						linear .XXX \pm .005/0.XX \pm 0.13		projection		title	VERTICAL HEADER w/ GUIDE PIN
						.XXX \pm .0020/.XXX \pm .051					POWER / SIGNAL
						angles 0° \pm 2°				product family	PWRBLADE
					dr	JRW 10-16-01		scale		size	213
					enrg	J.ALLISON 10-16-01		1:1		dwg no	sheet
					chr	J.ALLISON 10-16-01				51702	2
					appd	J.ALLISON 10-16-01					
sheet index	revision sheet										

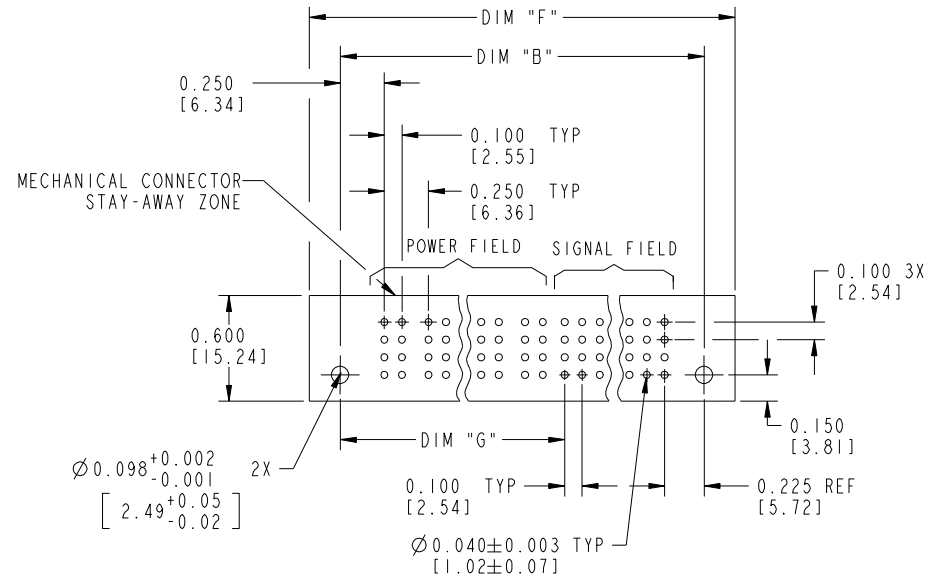
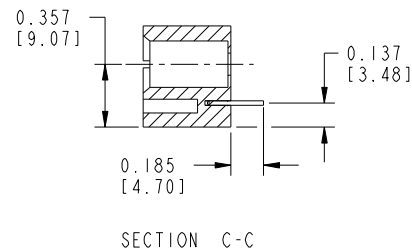
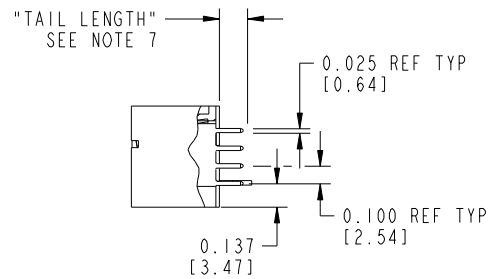
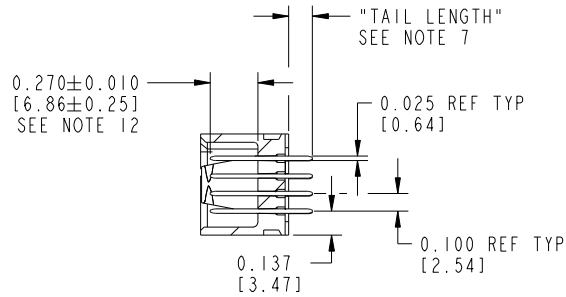
cage code 22526

Tous droits strictement réservés. Reproduction ou communication à des tiers interdite sous quelque forme que ce soit sans autorisation écrite du propriétaire. Propriété de c FCI. Droits de reproduction FCI.



All rights strictly reserved. Reproduction or issue to third parties in any form whatever is not permitted without written authority from the proprietor. Property of FCI. Copyright FCI.

PRODUCT NUMBER
51702-ABBCCC00EF--
Note: ①
SEE NOTE 1



RECOMMENDED PCB LAYOUT

mat'l code				NOTE 2		tolerances unless otherwise specified		CUSTOMER		FCI		www.fciconnect.com	
litr	ecn no.	dr	date	linear	.XX±.01/0.X±0.3	projection	COPY	INCH/MM	scale	A	product family	PWRBLADE	code
P													
				angles	.XXX±.005/0.XX±0.13	0°±2°	JRW	10-16-01	J. ALLISON	10-16-01	size	dwg no	213
				enrg	.XXXX±.0020/.XXX±.051	0°±2°	JRW	10-16-01	J. ALLISON	10-16-01	scale	51702	sheet
				chr	J. ALLISON	10-16-01	JRW	10-16-01	J. ALLISON	10-16-01	A	51702	3
				appd	J. ALLISON	10-16-01	JRW	10-16-01	J. ALLISON	10-16-01	A	51702	3
sheet index	revision sheet												

Pro/E

3

cage code 22526

4