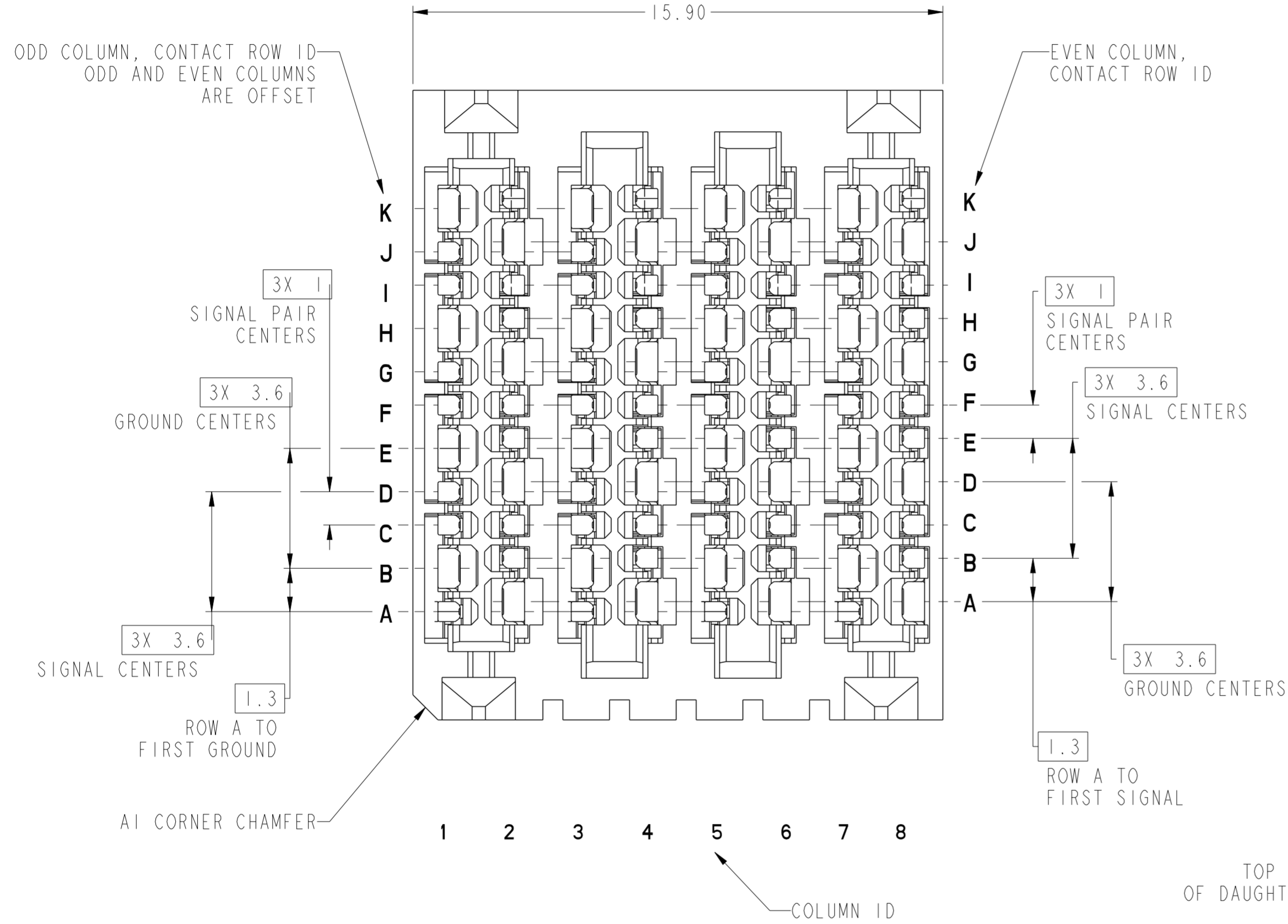
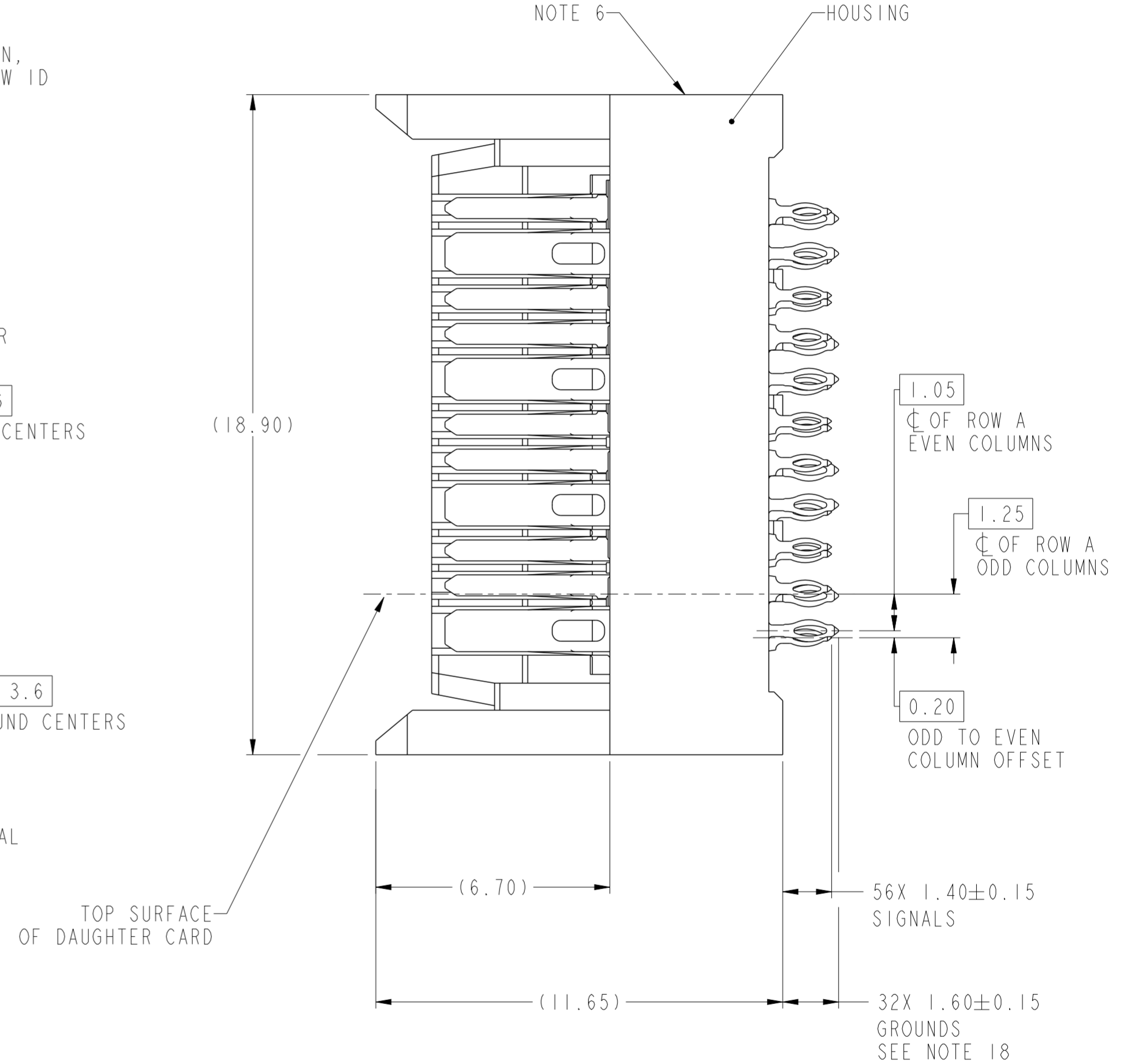


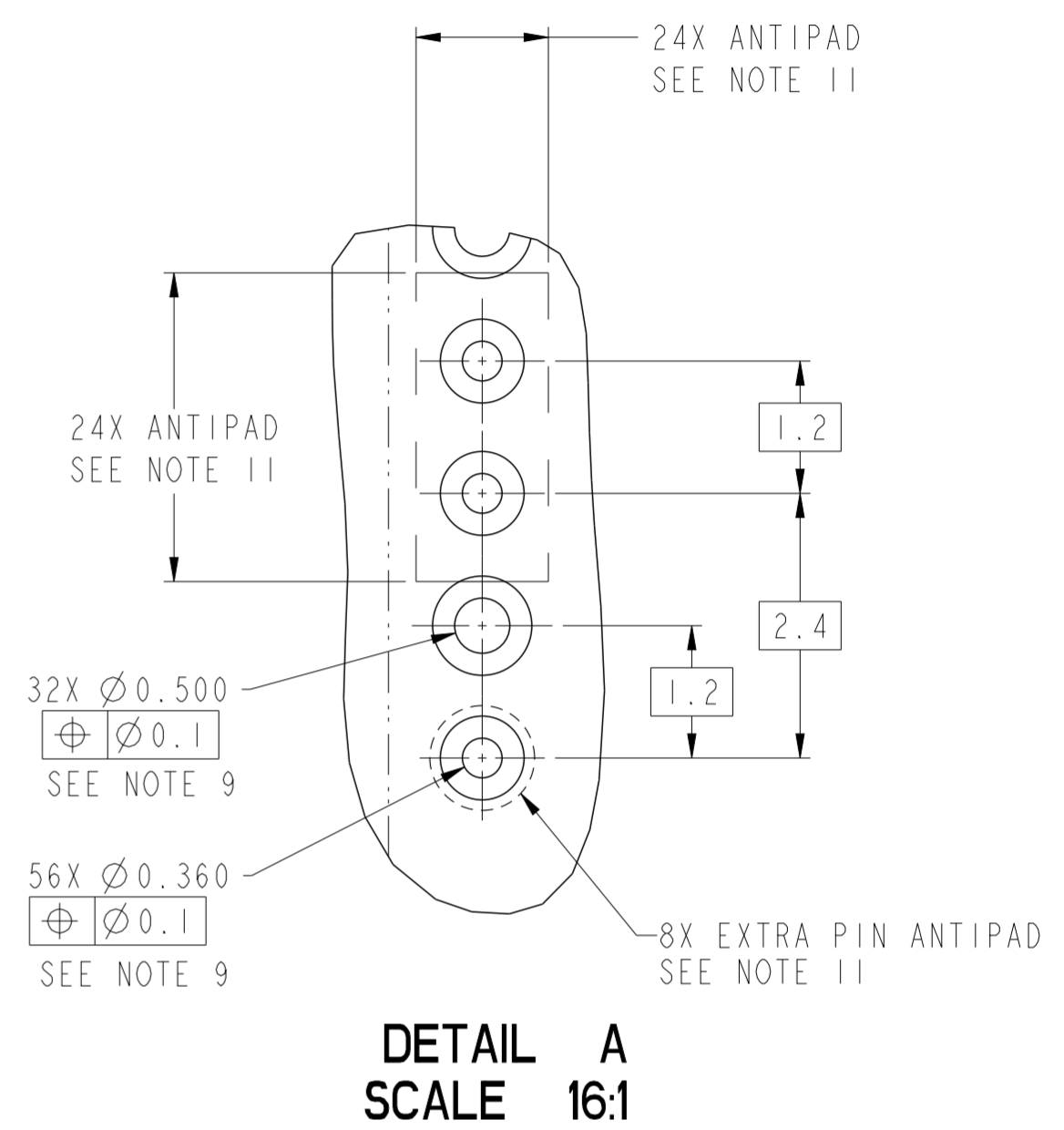
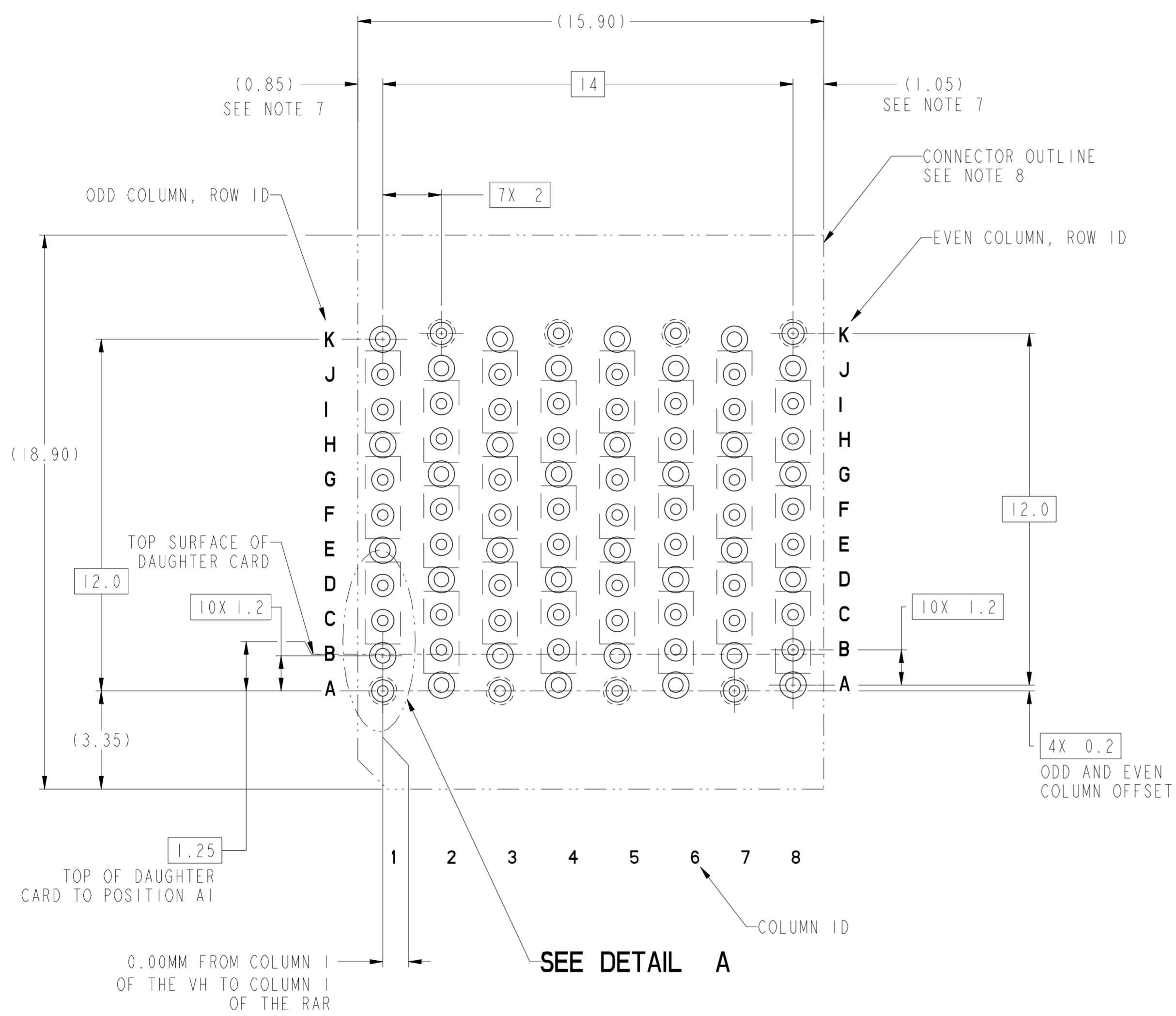
PRODUCT NUMBER
SEE SHEET 10



10124311-Y01YLF
(10124311-101LF STANDARD MATE CONNECTOR SHOWN)

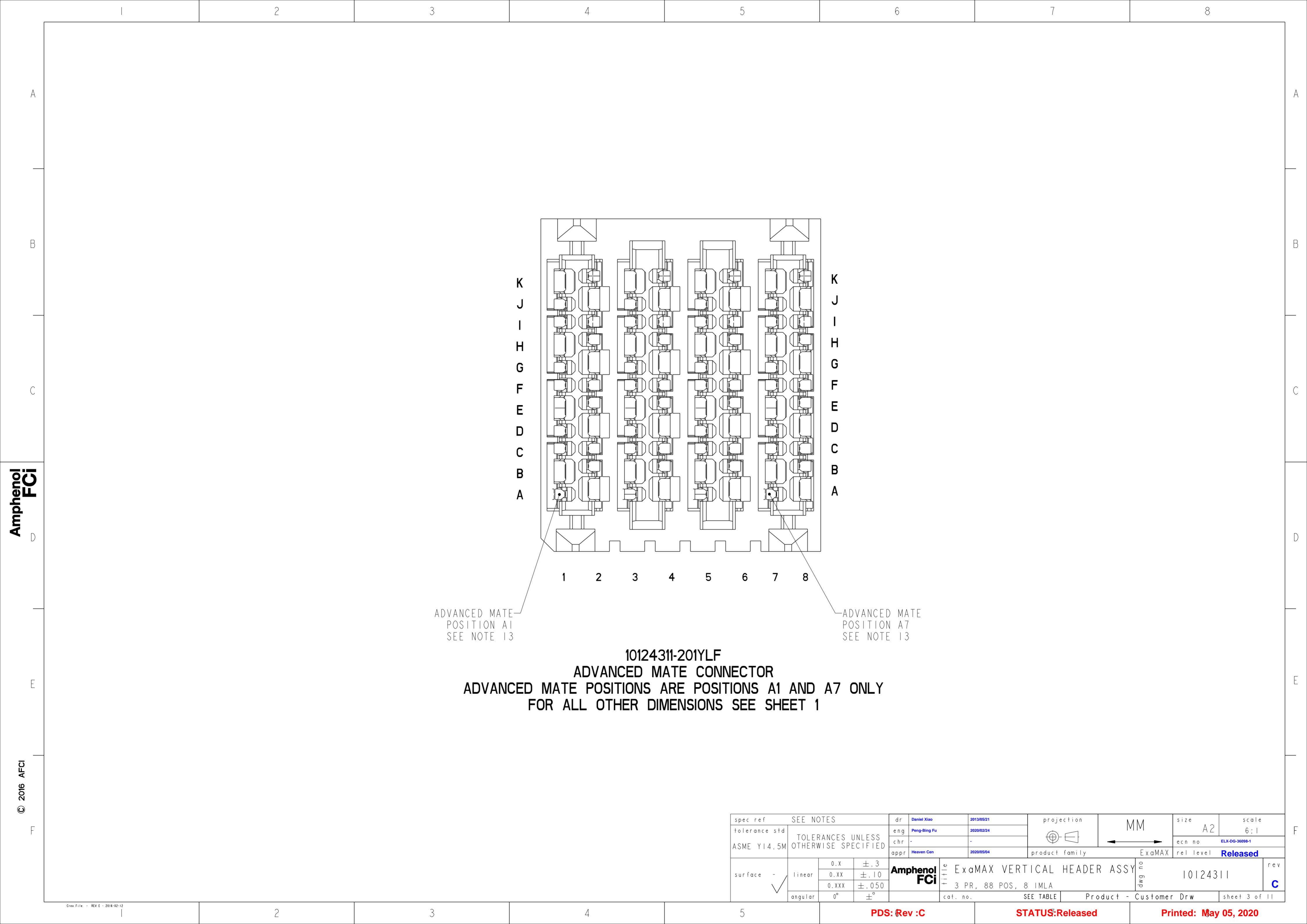


spec ref	SEE NOTES	dr	Daniel Xiao	2013/05/21	projection	MM	size	A2	scale	8:1
tolerance std	TOLERANCES UNLESS OTHERWISE SPECIFIED	eng	Peng-Bing Fu	2020/02/24			ecn no	ELX-DG-36098-1		
ASME Y14.5M		chr	-	-			rel level	Released		
		appr	Heaven Cen	2020/05/04	product family	ExaMAX				
surface	linear	0.X	±.3		Amphenol FCI	title	ExaMAX VERTICAL HEADER ASSY	dwg no	10124311	rev
		0.XX	±.10							C
		0.XXX	±.050							
	angular	0°	±°							
					cat. no.	SEE TABLE	Product - Customer Drw	sheet 1 of 11		



RECOMMENDED PCB LAYOUT FOR
10124311-Y01YLF COMPONENT SIDE
SEE NOTES 7, 8, 9, & 11

spec ref	SEE NOTES	dr	Daniel Xiao	2013/05/21	projection	MM	size	A2	scale	3:1
tolerance std	TOLERANCES UNLESS OTHERWISE SPECIFIED	eng	Peng-Bing Fu	2020/02/24	chr	-	ecn no	ELX-DG-36098-1	rel level	Released
ASME Y14.5M		appr	Heaven Cen	2020/05/04	product family	ExaMAX	rel level	Released		
surface	linear	0.X	±.3	Amphenol FCI	title	ExaMAX VERTICAL HEADER ASSY	dwg no	10124311	rev	C
		0.XX	±.10			3 PR, 88 POS, 8 IMLA				
		0.XXX	±.050							
	angular	0°	±°		cat. no.	SEE TABLE	Product - Customer Drw	sheet 2 of 11		



Amphenol
FCi

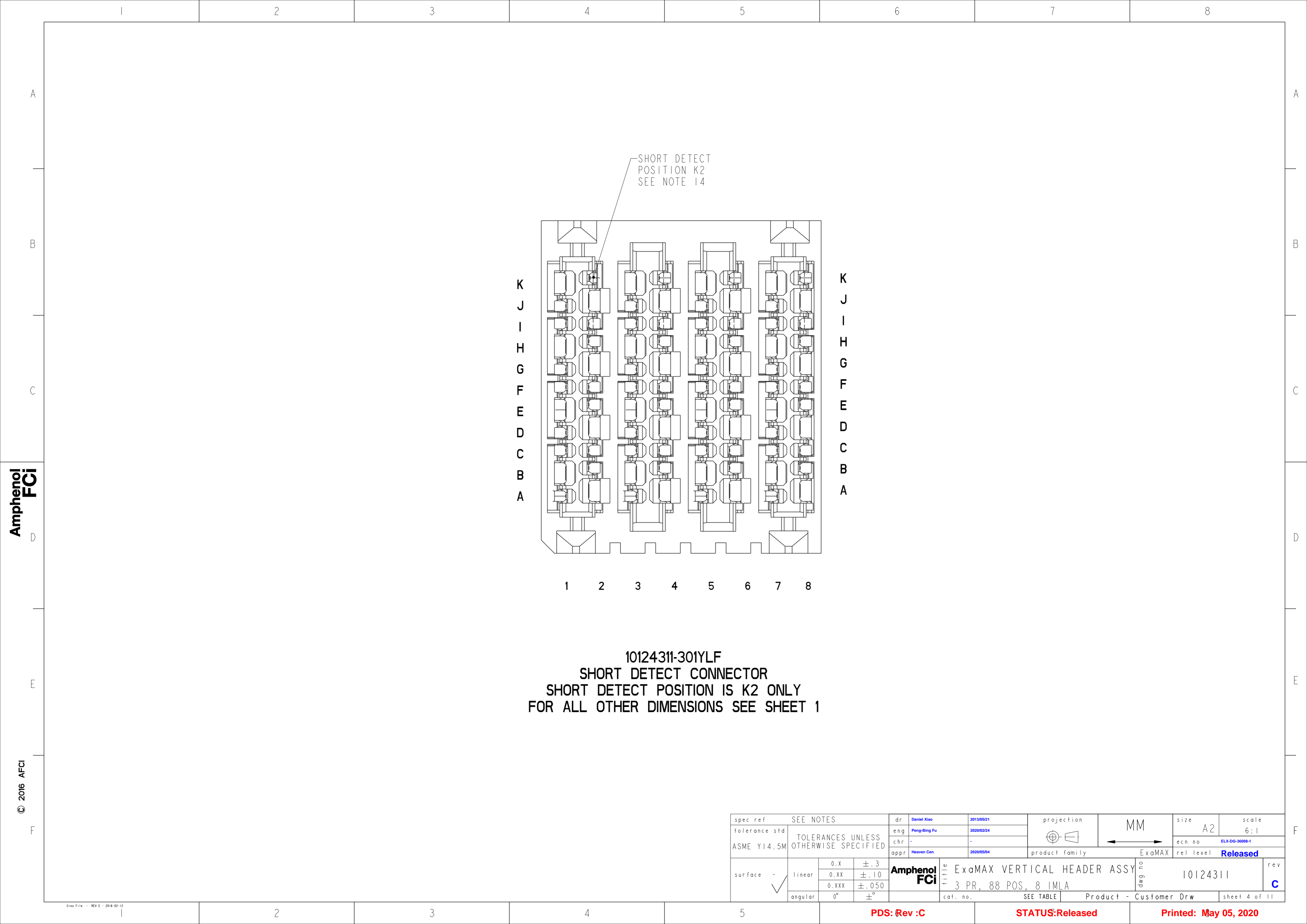
© 2016 AFCi

spec ref	SEE NOTES				dr	Daniel Xiao	2013/05/21	<div>projection</div> <div></div> <div>MM</div>	size	A2	scale	6:1		
tolerance std	TOLERANCES UNLESS OTHERWISE SPECIFIED				eng	Peng-Bing Fu	2020/02/24		ecn no	ELX-DG-36098-1				
ASME Y14.5M					chr	-	-			rel level	Released			
					appr	Heaven Cen	2020/05/04							
					product family				ExaMAX					
surface - <div>✓</div>	linear	0.X	±.3	Amphenol FCI	title	ExaMAX VERTICAL HEADER ASSY					dwg no	10124311	rev	C
		0.XX	±.10											
		0.XXX	±.050			3 PR, 88 POS, 8 IMLA								
		angular	0°											
					cat. no.	SEE TABLE	Product - Customer Drw				sheet 3 of 11			

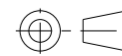
PDS: Rev :C

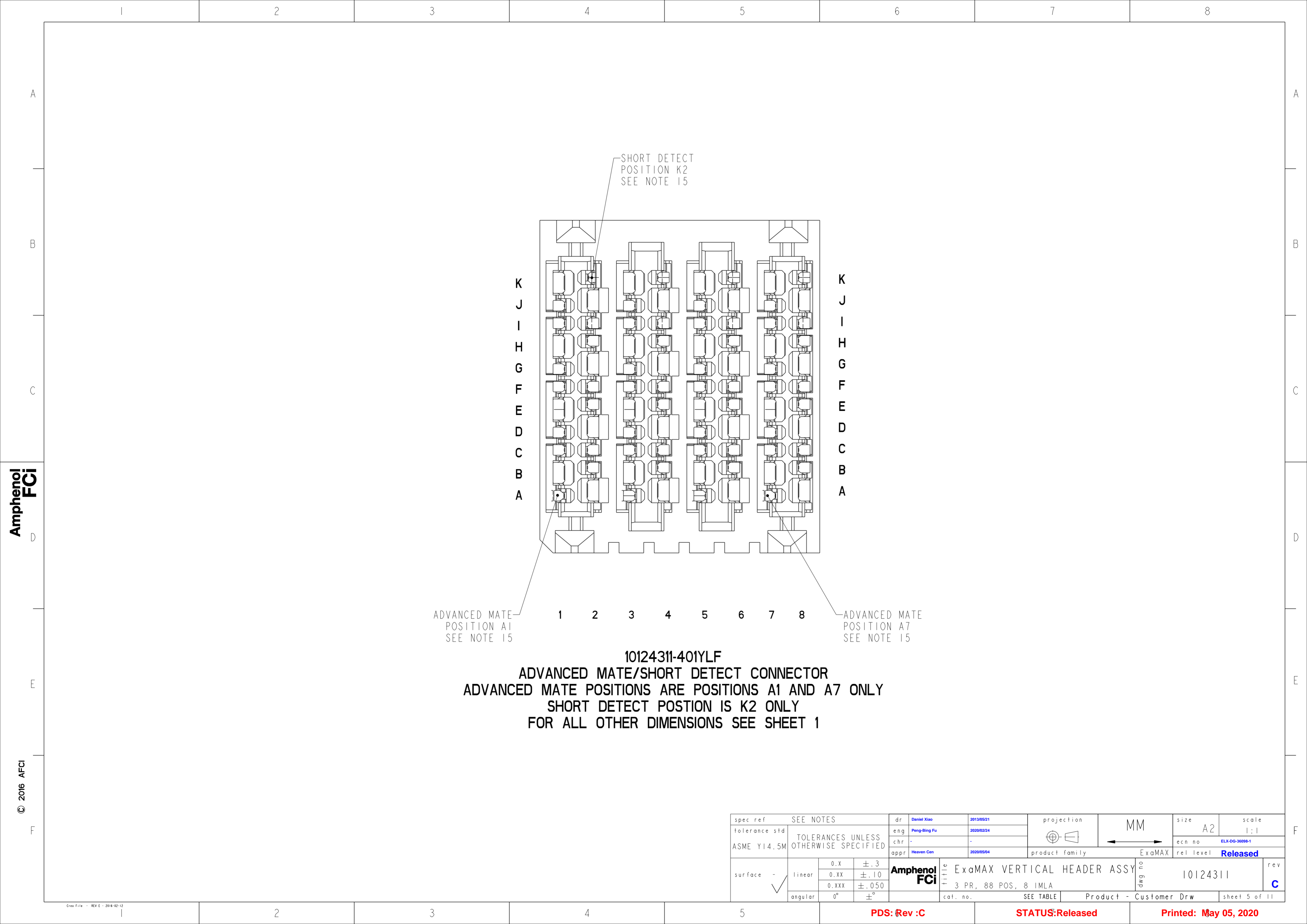
STATUS:Released

Printed: May 05, 2020



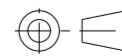
10124311-301YLF
SHORT DETECT CONNECTOR
SHORT DETECT POSITION IS K2 ONLY
FOR ALL OTHER DIMENSIONS SEE SHEET 1

spec ref	SEE NOTES				dr	Daniel Xiao	2013/05/21	<div>projection</div> <div></div> <div>MM</div>	size	A2	scale	6:1			
tolerance std	TOLERANCES UNLESS OTHERWISE SPECIFIED				eng	Peng-Bing Fu	2020/02/24		ecn no	ELX-DG-36098-1					
ASME Y14.5M					chr	-	-		rel level	Released					
					appr	Heaven Cen	2020/05/04		product family		ExaMAX				
surface	-	linear	0.X	±.3	Amphenol FCi	title	ExaMAX VERTICAL HEADER ASSY				dwg no	10124311	rev	C	
	✓		0.XX	±.10											
		0.XXX	±.050	cat. no.			SEE TABLE	Product - Customer Drw		sheet 4 of 11					
		angular	0°	±°											



Amphenol
FCi

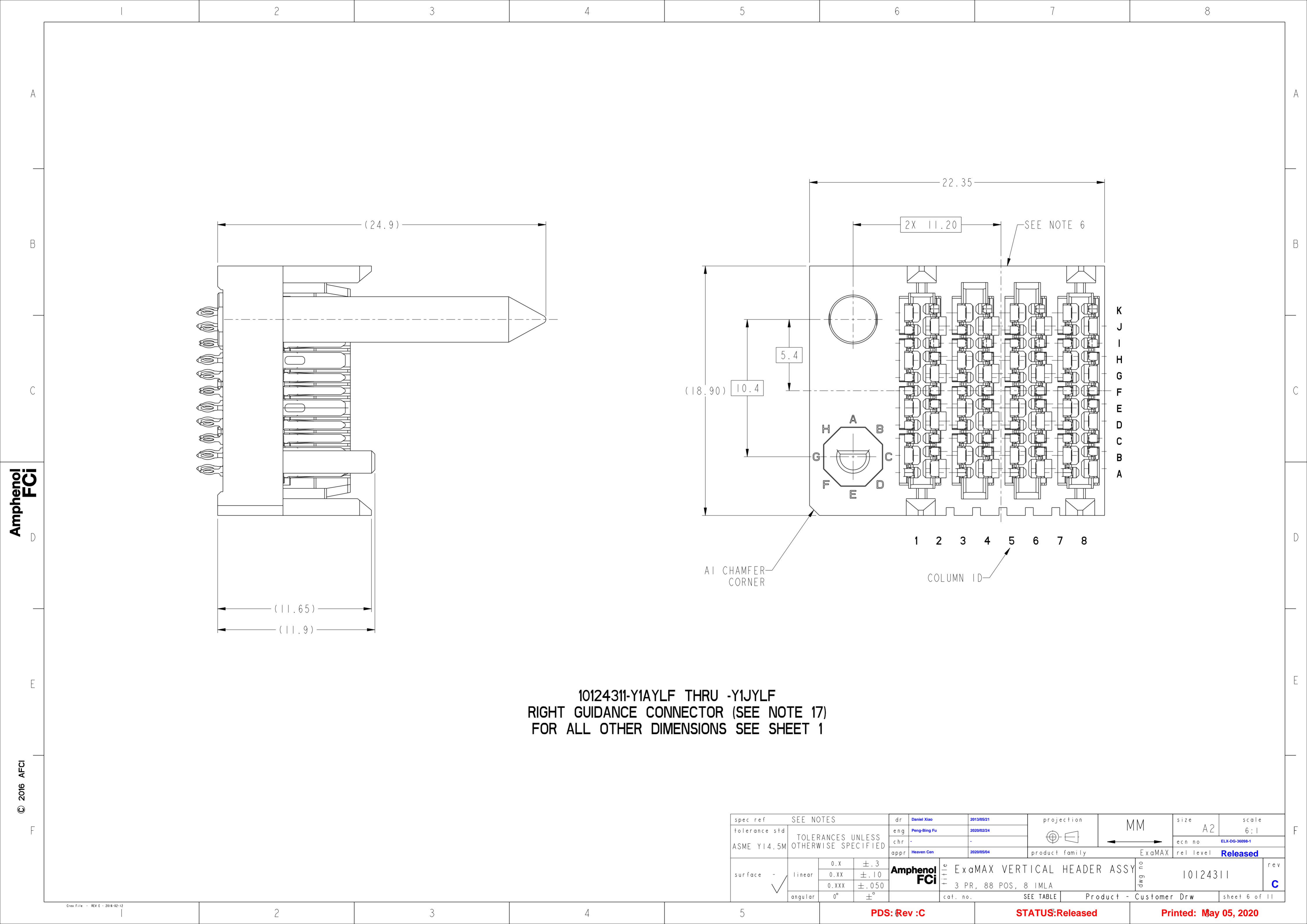
© 2016 AFCi

spec ref		SEE NOTES			dr		Daniel Xiao		2013/05/21		projection		<div>MM</div>		size		A2		scale		1:1								
tolerance std		TOLERANCES UNLESS OTHERWISE SPECIFIED			eng		Peng-Bing Fu		2020/02/24				<div>←</div> <div>→</div>		ecn no		ELX-DG-36098-1												
ASME Y14.5M					chr		-		-						rel level		Released												
					appr		Heaven Cen		2020/05/04						product family		ExaMAX												
surface - <div>✓</div>		linear		0.X		±.3		Amphenol FCi		title		ExaMAX VERTICAL HEADER ASSY										dwg no		10124311		rev		C	
				0.XX		±.10																							
				0.XXX		±.050																							
		angular		0°		±°		cat. no.		SEE TABLE		Product - Customer Drw										sheet 5 of 11							

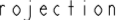



PDS: Rev :C

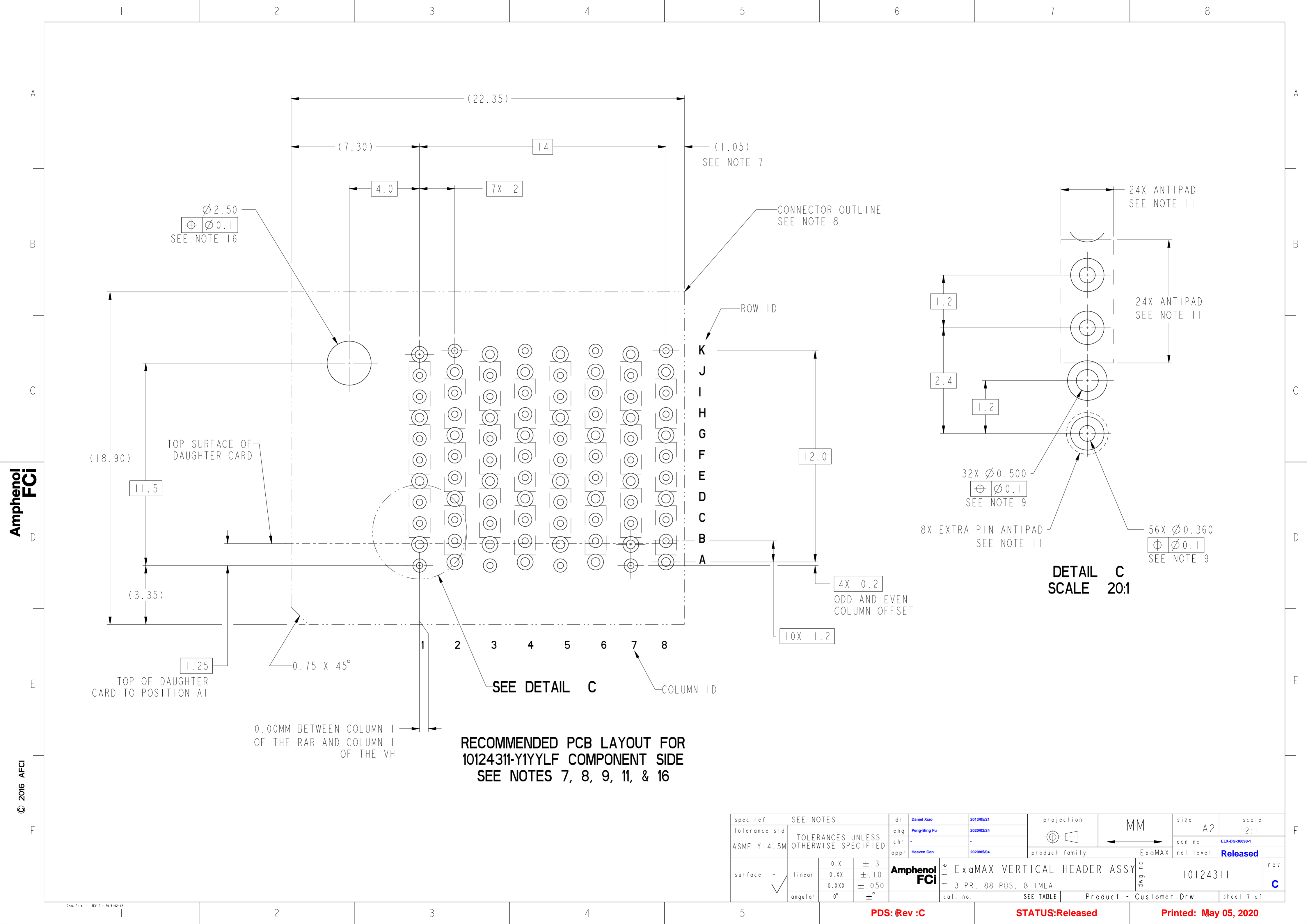
STATUS:Released

Printed: May 05, 2020



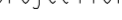


10124311-Y1AYLF THRU -Y1JYLF
RIGHT GUIDANCE CONNECTOR (SEE NOTE 17)
FOR ALL OTHER DIMENSIONS SEE SHEET 1

spec ref	SEE NOTES				dr	Daniel Xiao	2013/05/21			size	A2	scale	6:1		
tolerance std	TOLERANCES UNLESS OTHERWISE SPECIFIED				eng	Peng-Bing Fu	2020/02/24			ecn no	ELX-DG-36098-1				
ASME Y14.5M					chr	-	-			rel level	Released				
				appr	Heaven Cen	2020/05/04	product family			ExaMAX					
	linear	0.X	±.3		title	ExaMAX VERTICAL HEADER ASSY					dwg no	10124311		rev	C
		0.XX	±.10												
		0.XXX	±.050												
		angular	0°	±°		cat. no.	SEE TABLE	Product - Customer Drw					sheet 6 of 11		



Amphenol
FCi

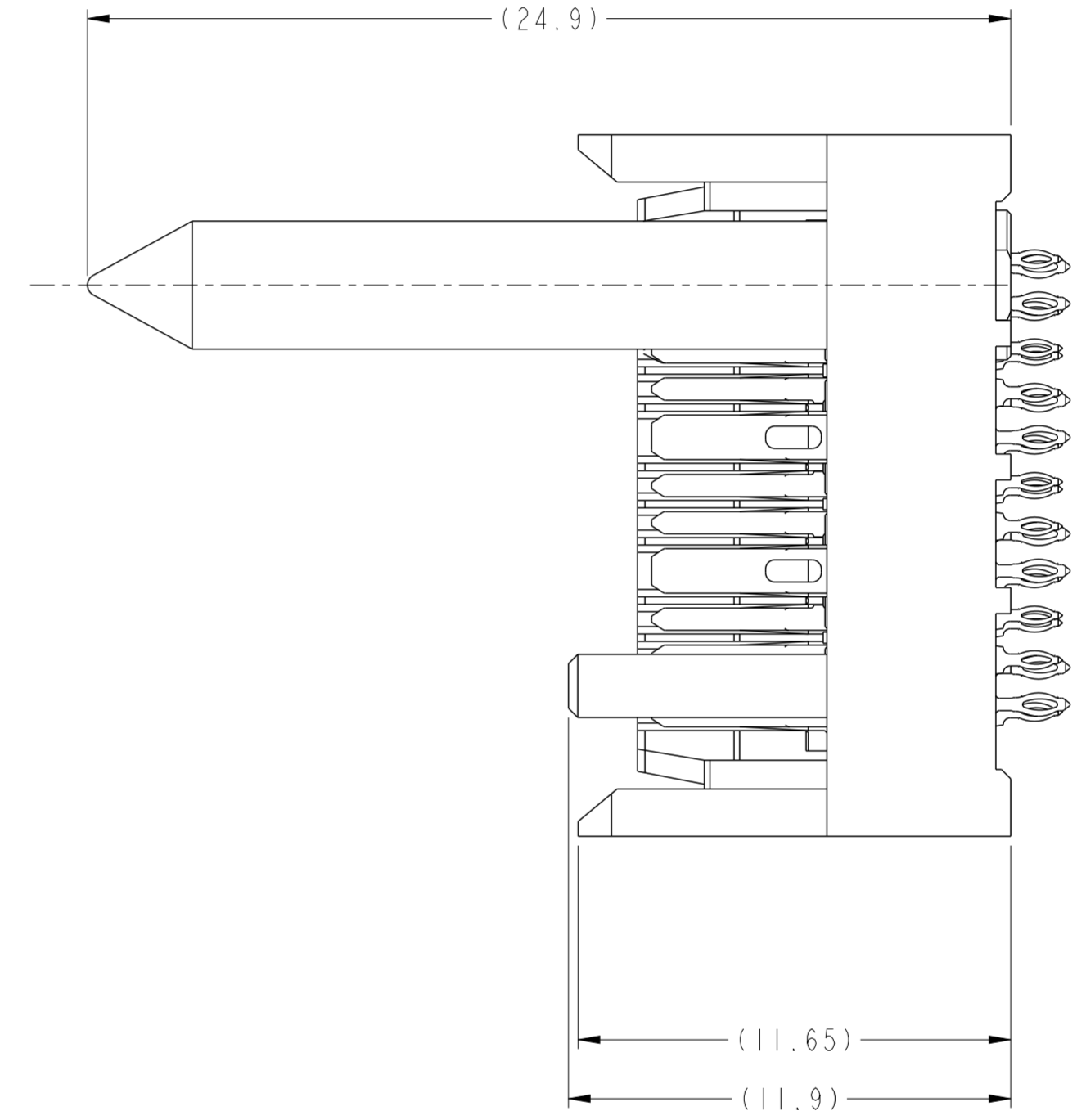
© 2016 AFCi

spec ref		SEE NOTES			dr	Daniel Xiao	2013/05/21	projection 	MM 	size	A2	scale	2:1		
tolerance std		TOLERANCES UNLESS OTHERWISE SPECIFIED			eng	Peng-Bing Fu	2020/02/24			ecn no	ELX-DG-36098-1				
ASME Y14.5M					chr	-	-			product family	ExaMAX			rel level	Released
		appr	Heaven Cen			2020/05/04									
surface - 	linear	0.X	±.3		Amphenol FCi	title	ExaMAX VERTICAL HEADER ASSY					dwg no	10124311		rev C
		0.XX	±.10												
		0.XXX	±.050				3 PR, 88 POS, 8 IMLA								
	angular	0°	±°												
					cat. no.	SEE TABLE	Product - Customer Drw					sheet 7 of 11			

PDS: Rev :C

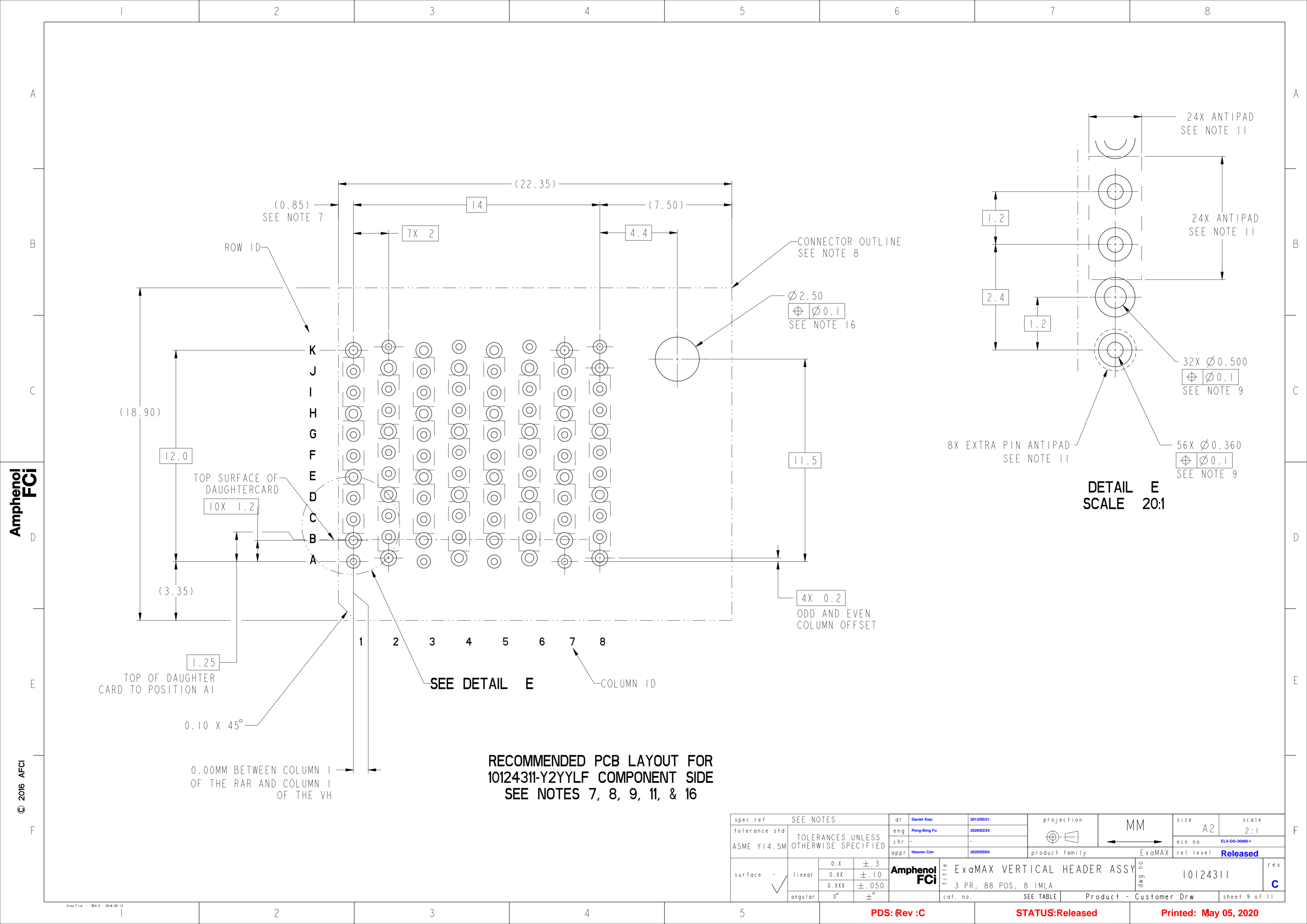
STATUS:Released

Printed: May 05, 2020



**Amphenol
FCi**

Printed: May 05, 2020



Amphenol
FCi

© 2016 AFCi

spec ref		SEE NOTES			dr		Daniel Xiao		2013/05/21		projection		MM		size		A2		scale		2:1		
tolerance std		TOLERANCES UNLESS OTHERWISE SPECIFIED			eng		Peng-Bing Fu		2020/02/24						ecn no		ELX-DG-36098-1						
ASME Y14.5M					chr		-		-														
					appr		Heaven Cen		2020/05/04														product family
surface		-		linear		0.X		±.3		Amphenol FCi		title		ExaMAX VERTICAL HEADER ASSY		dwg no		10124311		rev		C	
		0.XX		±.10																			
		0.XXX		±.050																			
		angular		0°		±°		cat. no.		SEE TABLE		Product - Customer Drw		sheet 9 of 11									

PDS: Rev :C

STATUS:Released

Printed: May 05, 2020

10124311 - Y Y Y Y L F

PLATING
SEE NOTE 2

ASSEMBLY PART NUMBER	DESCRIPTION
10124311-1YYYYLF	STANDARD MATE
10124311-2YYYYLF	ADVANCED MATE
10124311-3YYYYLF	SHORT DETECT
10124311-4YYYYLF	ADVANCED MATE & SHORT DETECT

MODULE DESCRIPTION	DESIGNATION REPRESENTED IN DASH NUMBER									BASE MODULE
STANDARD NO GUIDANE (SEE SHEET 1)	01									
RIGHT GUIDANCE MODULE (SEE SHEET 6)	1A	1B	1C	1D	1E	1F	1G	1H	1J (NO KEY)	
LEFT GUIDANCE MODULE (SEE SHEET 8)	2A	2B	2C	2D	2E	2F	2G	2H	2J (NO KEY)	

spec ref	SEE NOTES			dr	Daniel Xiao	2013/05/21			size	A2	scale	1:1		
tolerance std	TOLERANCES UNLESS OTHERWISE SPECIFIED			eng	Peng-Bing Fu	2020/02/24			ecn no	ELX-DG-36098-1				
ASME Y14.5M				chr	-	-			rel level	Released				
appr				Heaven Cen	2020/05/04	product family			ExaMAX					
	linear	0.X	±.3		title	ExaMAX VERTICAL HEADER ASSY 3 PR, 88 POS, 8 IMLA				dwg no	10124311		rev	C
		0.XX	±.10											
		0.XXX	±.050											
		angular	0°											
				cat. no.		SEE TABLE	Product - Customer Drw				sheet 10 of 11			

	1	2	3	4	5	6	7	8																																																																																
A	<div>NOTES</div> <div>①- CONNECTOR MATERIALS: HOUSING: HIGH TEMP THERMOPLASTIC, BLACK, UL94-V0 IMLA PLASTIC: HIGH TEMP THERMOPLASTIC, BLACK, UL94-V0 CONTACT: COPPER ALLOY GUIDE PIN: ZINC ALLOY KEY PIN: ZINC ALLOY</div> <div>2 - CONTACT PLATING: SEPARABLE INTERFACE: -YYYYLF: PERFORMANCE-BASED PLATING, QUALIFIED TO MEET THE REQUIREMENTS OF FCI PRODUCT SPECIFICATION GS-12-1096 INCLUDING TELCORDIA GR-1217-CORE (NOVEMBER 1995) CENTRAL OFFICE TEST SEQUENCE. -YYY2LF: GXT+ OVER NICKEL -YYY9LF: GXT OVER NICKEL PRESS-FIT TAILS: TIN OVER NICKEL (LEAD FREE)</div> <div>3 - PRODUCT SPECIFICATION: GS-12-1096</div> <div>4 - APPLICATION SPECIFICATION: GS-20-0361</div> <div>5 - PACKAGING MEETS GS-14-920 LEAD FREE LABELING SPECIFICATION.</div> <div>⑥- PRODUCT MARKING, (PART NUMBER & LOT CODE), ON THIS SURFACE.</div> <div>⑦- THE MINIMUM VIA SPACING BETWEEN STACKED CONNECTORS WILL BE 2.0 mm OR 3.0 mm AS DEFINED BY NOTE 7 ON THE MATING RECEPTACLE CUSTOMER DRAWING. REFER TO THE APPLICATION SPECIFICATION FOR DETAILS.</div> <div>⑧- CONNECTOR OUTLINE MAY BE SCREEN PRINTED ONTO CUSTOMER PCB TO BE USED AS A GUIDE FOR MANUAL CONNECTOR PLACEMENT.</div> <div>⑨- REFER TO CUSTOMER DRAWING 10119933 FOR INFORMATION ON PCB HOLE DIAMETERS AND PLATING OPTIONS</div> <div>10- THIS PRODUCT MEETS THE EUROPEAN UNION DIRECTIVES & OTHER COUNTRY REGULATIONS AS DESCRIBED IN GS-47-0004</div> <div>⑪- REFER TO ROUTING GUIDE GS-20-0511 FOR RECOMMENDATIONS ON OPTIMIZATION OF FOOTPRINT AND TRACE ROUTING LAYOUT.</div> <div>12- THE HOUSING WILL WITHSTAND EXPOSURE TO 260°C PEAK TEMPERATURE FOR 10-30 SECONDS IN A CONVECTION, INFRA-RED, OR VAPOR PHASE REFLOW OVEN.</div> <div>⑬- THE ADVANCED MATE HEADER, 10124311-2YYYYLF, WHEN MATED WITH AN ADVANCED MATE RECEPTACLE WILL PROVIDE 2 PAIRS OF MATING CONTACTS THAT MATE 0.75MM BEFORE THE REMAINDER OF THE SIGNAL AND GROUND CONTACTS.</div> <div>⑭- THE SHORT DETECT HEADER, 10124311-3YYYYLF, WHEN MATED WITH A STANDARD MATE RECEPTACLE WILL PROVIDE 1 PAIR OF MATING CONTACTS THAT MATE 1.00MM AFTER THE REMAINDER OF THE SIGNAL AND GROUND CONTACTS.</div> <div>⑮- THE ADVANCED MATE/SHORT DETECT HEADER, 10124311-4YYYYLF, WHEN MATED WITH AN ADVANCED MATE RECEPTACLE WILL PROVIDE 2 PAIRS OF MATING CONTACTS THAT MATE 0.75MM BEFORE THE REMAINDER OF THE SIGNAL AND GROUND CONTACTS, AND 1 PAIR OF MATING CONTACTS THAT MATE 1.00MM AFTER THE REMAINDER OF THE SIGNAL AND GROUND CONTACTS.</div> <div>⑯- FOR CONNECTORS WITH EITHER A RIGHT OR LEFT GUIDE MODULE, ONE PHILLIPS PAN HEAD M2 HOLD DOWN SCREW MUST BE USED TO SECURE GUIDE PIN/CONNECTOR TO THE PCB. THE SCREW LENGTH SHALL BE 2.0 - 6.0mm PLUS THE THICKNESS OF THE BOARD. SCREW IS NOT PROVIDED WITH CONNECTOR.</div> <div>⑰- LEFT / RIGHT INTEGRATED GUIDE ORIENTATION IS DETERMINED BY THE LOCATION OF THE GUIDE FEATURES WHEN LOOKING AT THE MATING FACE OF THE RIGHT ANGEL RECEPTACLE. THE LEFT / RIGHT DESIGNATION OF THE MATING HEADER IS DEFINED BY THE RIGHT ANGEL RECEPTACLE THAT IT MATES WITH (i. e. A RIGHT GUIDE VERTICAL HEADER MATES A RIGHT GUIDE RIGHT ANGEL RECEPTACLE.)</div> <div>⑱- ALL GROUND CONTACTS WITHIN A COLUMN ARE COMMONED.</div>								A																																																																															
B									B																																																																															
C									C																																																																															
D									D																																																																															
E									E																																																																															
F									F																																																																															
<div>Amphenol FCI</div> <div>© 2016 AFCI</div>																																																																																								
<table><tr><td>spec ref</td><td colspan="3">SEE NOTES</td><td>dr</td><td>Daniel Xiao</td><td>2013/05/21</td><td>projection</td><td rowspan="3"></td><td rowspan="3"></td><td>size</td><td>A2</td><td>scale</td><td>2:1</td></tr><tr><td>tolerance std</td><td colspan="3" rowspan="2">TOLERANCES UNLESS OTHERWISE SPECIFIED</td><td>eng</td><td>Peng-Bing Fu</td><td>2020/02/24</td><td>ecn no</td><td>ELX-DG-36098-1</td></tr><tr><td>ASME Y14.5M</td><td>chr</td><td>-</td><td>-</td><td>rel level</td><td>Released</td></tr><tr><td></td><td>appr</td><td>Heaven Cen</td><td>2020/05/04</td><td colspan="3">product family</td><td>ExaMAX</td><td colspan="4"></td></tr><tr><td>surface</td><td rowspan="3">- </td><td>linear</td><td>0.X</td><td>±.3</td><td rowspan="3">Amphenol FCI</td><td colspan="3" rowspan="3">title</td><td colspan="3" rowspan="3">ExaMAX VERTICAL HEADER ASSY</td><td rowspan="3">no</td><td rowspan="3">10124311</td><td rowspan="3">rev</td><td rowspan="3">C</td></tr><tr><td></td><td></td><td>0.XX</td><td>±.10</td></tr><tr><td></td><td></td><td>0.XXX</td><td>±.050</td></tr><tr><td></td><td></td><td>angular</td><td>0°</td><td>±°</td><td></td><td colspan="3">cat. no.</td><td>SEE TABLE</td><td colspan="3">Product - Customer Drw</td><td colspan="2">sheet 11 of 11</td></tr></table>									spec ref	SEE NOTES			dr	Daniel Xiao	2013/05/21	projection			size	A2	scale	2:1	tolerance std	TOLERANCES UNLESS OTHERWISE SPECIFIED			eng	Peng-Bing Fu	2020/02/24	ecn no	ELX-DG-36098-1	ASME Y14.5M	chr	-	-	rel level	Released		appr	Heaven Cen	2020/05/04	product family			ExaMAX					surface	- 	linear	0.X	±.3	Amphenol FCI	title			ExaMAX VERTICAL HEADER ASSY			no	10124311	rev	C			0.XX	±.10			0.XXX	±.050			angular	0°	±°		cat. no.			SEE TABLE	Product - Customer Drw			sheet 11 of 11	
spec ref	SEE NOTES			dr	Daniel Xiao	2013/05/21	projection			size	A2	scale	2:1																																																																											
tolerance std	TOLERANCES UNLESS OTHERWISE SPECIFIED			eng	Peng-Bing Fu	2020/02/24	ecn no			ELX-DG-36098-1																																																																														
ASME Y14.5M				chr	-	-	rel level			Released																																																																														
	appr	Heaven Cen	2020/05/04	product family			ExaMAX																																																																																	
surface	- 	linear	0.X	±.3	Amphenol FCI	title			ExaMAX VERTICAL HEADER ASSY			no	10124311	rev	C																																																																									
			0.XX	±.10																																																																																				
			0.XXX	±.050																																																																																				
		angular	0°	±°		cat. no.			SEE TABLE	Product - Customer Drw			sheet 11 of 11																																																																											
<div>Creo File - REV E - 2016-02-12</div>																																																																																								
	1	2	3	4	5	PDS: Rev :C		STATUS:Released		Printed: May 05, 2020																																																																														