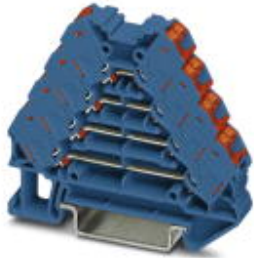


## Marshalling panel - PTRV 4 BU/RD - 3270120

Please be informed that the data shown in this PDF Document is generated from our Online Catalog. Please find the complete data in the user's documentation. Our General Terms of Use for Downloads are valid (<http://phoenixcontact.com/download>)



Marshalling panel, Nom. voltage: 250 V, Nominal current: 10 A, Cross section: 0.14 mm<sup>2</sup> - 2.5 mm<sup>2</sup>, AWG: 12 - 26, Connection type: Push-in connection, Width: 8.3 mm, Length: 64 mm, Color: blue, Assembly: NS 35/7,5, NS 35/15

### Product Features

- Blue design for use in EXi areas
- High contact quality thanks to push-in technology as a replacement for Wire-Wrap®, TERMI-POINT®, etc.
- Individual color assignment of cable and terminal point to ensure error-free, safe operation
- Tool-free wiring in a confined space thanks to compact size
- The 2.3 mm test connection enables testing between the conductors with test pins commonly used in the industry



### Key Commercial Data

|                        |          |
|------------------------|----------|
| Packing unit           | 1 pc     |
| Minimum order quantity | 10 pc    |
| Custom tariff number   | 85369010 |
| Country of origin      | Poland   |

### Technical data

#### General

|  |                     |
|--|---------------------|
| Number of levels                       | 4                   |
| Number of connections                  | 16                  |
| Nominal cross section                  | 1.5 mm <sup>2</sup> |
| Color                                  | blue                |
| Insulating material                    | PA                  |
| Flammability rating according to UL 94 | V0                  |
| Rated surge voltage                    | 6 kV                |
| Overvoltage category                   | III                 |
| Insulating material group              | I                   |

# Marshalling panel - PTRV 4 BU/RD - 3270120

## Technical data

### General

|                                  |   |
|----------------------------------|---|
| Connection in acc. with standard | IEC 60947-7-1   |
| Maximum load current             | 10 A (with 1.5 mm <sup>2</sup> conductor cross section) |
| Nominal current I <sub>N</sub>   | 10 A  |
| Nominal voltage U <sub>N</sub>   | 250 V   |
| Open side panel                  | Yes   |

### Dimensions

|                  |         |
|------------------|---------|
| Width            | 8.3 mm  |
| Length           | 64 mm   |
| Height NS 35/7,5 | 55.5 mm |
| Height NS 35/15  | 63 mm   |

### Connection data

|  |                      |
|--|----------------------|
| Connection method  | Push-in connection   |
| Connection in acc. with standard   | IEC 60947-7-1        |
| Conductor cross section solid min.   | 0.14 mm <sup>2</sup> |
| Conductor cross section solid max.   | 2.5 mm <sup>2</sup>  |
| Conductor cross section AWG min.   | 26                   |
| Conductor cross section AWG max.   | 12                   |
| Conductor cross section flexible min.                                      | 0.14 mm <sup>2</sup> |
| Conductor cross section flexible max.                                      | 1.5 mm <sup>2</sup>  |
| Min. AWG conductor cross section, flexible                                 | 26                   |
| Max. AWG conductor cross section, flexible                                 | 14                   |
| Conductor cross section flexible, with ferrule without plastic sleeve min. | 0.14 mm <sup>2</sup> |
| Conductor cross section flexible, with ferrule without plastic sleeve max. | 1.5 mm <sup>2</sup>  |
| Conductor cross section flexible, with ferrule with plastic sleeve min.    | 0.14 mm <sup>2</sup> |
| Conductor cross section flexible, with ferrule with plastic sleeve max.    | 1.5 mm <sup>2</sup>  |
| Stripping length   | 8 mm ... 10 mm       |

### Standards and Regulations

|  |               |
|--|---------------|
| Connection in acc. with standard       | IEC 60947-7-1 |
| Flammability rating according to UL 94 | V0            |

### Classifications

#### eCl@ss

|            |          |
|------------|----------|
| eCl@ss 4.0 | 27141121 |
| eCl@ss 4.1 | 27141121 |
| eCl@ss 5.0 | 27141120 |

# Marshalling panel - PTRV 4 BU/RD - 3270120

## Classifications

### eCl@ss

|            |          |
|------------|----------|
| eCl@ss 5.1 | 27141120 |
| eCl@ss 6.0 | 27141120 |
| eCl@ss 7.0 | 27141120 |
| eCl@ss 8.0 | 27141120 |
| eCl@ss 9.0 | 27141120 |

### ETIM

|          |          |
|----------|----------|
| ETIM 3.0 | EC000897 |
| ETIM 4.0 | EC000897 |
| ETIM 5.0 | EC000897 |

### UNSPSC

|               |          |
|---------------|----------|
| UNSPSC 6.01   | 30211811 |
| UNSPSC 7.0901 | 39121410 |
| UNSPSC 11     | 39121410 |
| UNSPSC 12.01  | 39121410 |
| UNSPSC 13.2   | 39121410 |

## Approvals

### Approvals

---

#### Approvals

UL Recognized / cUL Recognized

---

#### Ex Approvals

---

#### Approvals submitted

---

### Approval details

|                                |       |
|--------------------------------|-------|
| UL Recognized                  |       |
|                                | D     |
| mm <sup>2</sup> /AWG/kcmil     | 26-14 |
| Nominal current I <sub>N</sub> | 10 A  |
| Nominal voltage U <sub>N</sub> | 300 V |

## Marshalling panel - PTRV 4 BU/RD - 3270120

### Approvals

|                                |       |
|--------------------------------|-------|
| cUL Recognized                 |       |
|                                | D     |
| mm <sup>2</sup> /AWG/kcmil     | 26-14 |
| Nominal current I <sub>N</sub> | 10 A  |
| Nominal voltage U <sub>N</sub> | 300 V |

### Drawings

#### Circuit diagram

