

# PTU 16/14X2,5 GY - Potential collective terminal



3214016

<https://www.phoenixcontact.com/us/products/3214016>

Please be informed that the data shown in this PDF document is generated from our online catalog. Please find the complete data in the user documentation. Our general terms of use for downloads are valid.



Potential collective terminal, nom. voltage: 1000 V, nominal current: 25 A, number of connections: 15, connection method: Push-in connection, First level connection, interior, Rated cross section: 2.5 mm<sup>2</sup>, cross section: 1 mm<sup>2</sup> - 2.5 mm<sup>2</sup>, Screw connection, 1st level connection left, Rated cross section: 16 mm<sup>2</sup>, cross section: 1.5 mm<sup>2</sup> - 25 mm<sup>2</sup>, mounting type: NS 35/7,5, NS 35/15, color: gray

## Your advantages

- The terminal block base is ideal for use in building installation and machine building applications
- The Push-in connection terminal blocks are characterized by the system features of the CLIPLINE complete system and by easy and tool-free wiring of conductors with ferrules or solid conductors
- The compact design and front connection enable wiring in a confined space
- In addition to the testing option in the double function shaft, all terminal blocks provide an additional test pick-off

## Commercial data

Item number	3214016
Packing unit	10 pc
Minimum order quantity	10 pc
Sales key	BE29
Product key	BE2ZWX
Catalog page	Page 123 (C-3-2015)
GTIN	4046356701723
Weight per piece (including packing)	41.17 g
Weight per piece (excluding packing)	41.1 g
Customs tariff number	85369010
Country of origin	DE

## Technical data

### Product properties

Product type	Potential distributor
Number of connections	15
Number of rows	1
Potentials	1

### Insulation characteristics

Overvoltage category	III
Degree of pollution	2

### Electrical properties

Rated surge voltage	8 kV
Maximum power dissipation for nominal condition	2.43 W

### Connection data

Number of connections per level	15
---------------------------------	----

#### First level connection, interior

Internal cylindrical gage	A3
Connection in acc. with standard	VDE 0609, Part 1/EN 60999-1
Conductor cross section rigid	1 mm <sup>2</sup> ... 2.5 mm <sup>2</sup>
Cross section AWG	18 ... 14 (converted acc. to IEC)
Conductor cross section flexible	1 mm <sup>2</sup> ... 2.5 mm <sup>2</sup>
Conductor cross-section flexible (ferrule without plastic sleeve)	0.75 mm <sup>2</sup> ... 1.5 mm <sup>2</sup>
Flexible conductor cross section (ferrule with plastic sleeve)	0.75 mm <sup>2</sup> ... 1.5 mm <sup>2</sup>
Nominal current	25 A (The sum of the individual currents may not exceed the max. value of 80 A)
Maximum load current	25 A (The sum of the individual currents may not exceed the max. value of 80 A)
Nominal voltage	1000 V
Nominal cross section	2.5 mm <sup>2</sup>

#### 1st level connection left

Screw thread	M5
Tightening torque	2 ... 3 Nm
Stripping length	12 mm
Internal cylindrical gage	A7
Connection in acc. with standard	VDE 0609, Part 1/EN 60999-1
Conductor cross section rigid	1.5 mm <sup>2</sup> ... 25 mm <sup>2</sup>
Cross section AWG	16 ... 4 (converted acc. to IEC)
Conductor cross section flexible	1 mm <sup>2</sup> ... 16 mm <sup>2</sup>
Conductor cross section, flexible [AWG]	18 ... 6 (converted acc. to IEC)
Conductor cross-section flexible (ferrule without plastic sleeve)	1 mm <sup>2</sup> ... 16 mm <sup>2</sup>

# PTU 16/14X2,5 GY - Potential collective terminal



3214016

<https://www.phoenixcontact.com/us/products/3214016>

Flexible conductor cross section (ferrule with plastic sleeve)	1 mm <sup>2</sup> ... 16 mm <sup>2</sup>
2 conductors with same cross section, solid	1.5 mm <sup>2</sup> ... 10 mm <sup>2</sup>
2 conductors with same cross section, flexible	1.5 mm <sup>2</sup> ... 6 mm <sup>2</sup>
2 conductors with same cross section, flexible, with ferrule without plastic sleeve	1.5 mm <sup>2</sup> ... 6 mm <sup>2</sup>
2 conductors with the same cross section, flexible, with TWIN ferrule with plastic sleeve	1.5 mm <sup>2</sup> ... 6 mm <sup>2</sup>
Nominal current	80 A (with 16 mm <sup>2</sup> conductor cross section)
Maximum load current	80 A (with 25 mm <sup>2</sup> conductor cross section)
Nominal voltage	1000 V
Nominal cross section	16 mm <sup>2</sup>

## Dimensions

Width	17.5 mm
Height	89.5 mm
Depth on NS 35/7,5	36 mm
Depth on NS 35/15	43.5 mm

## Material specifications

Color	gray
Flammability rating according to UL 94	V0
Insulating material group	I
Insulating material	PA

## Mechanical properties

### Mechanical data

Open side panel	No
-----------------	----

## Environmental and real-life conditions

### Ambient conditions

Ambient temperature (storage/transport)	-25 °C ... 60 °C (for a short time, not exceeding 24 h, -60 °C to +70 °C)
Ambient temperature (assembly)	-5 °C ... 70 °C
Ambient temperature (actuation)	-5 °C ... 70 °C ()
Permissible humidity (storage/transport)	30 % ... 70 %

## Standards and regulations

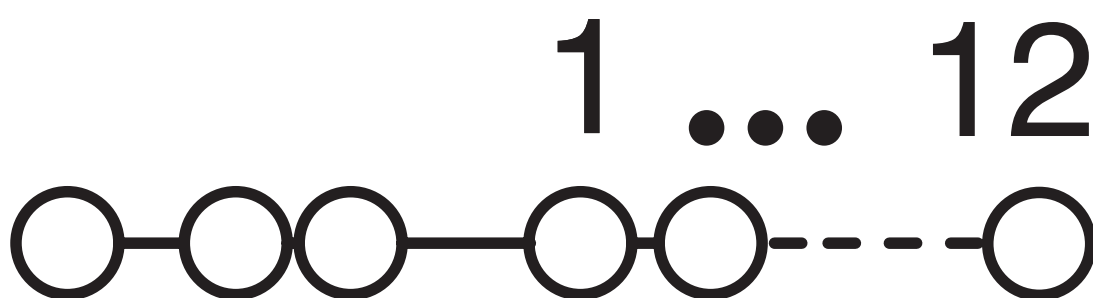
Connection in acc. with standard	VDE 0609, Part 1/EN 60999-1
	VDE 0609, Part 1/EN 60999-1

## Mounting

Mounting type	NS 35/7,5
	NS 35/15

Drawings

Circuit diagram



# PTU 16/14X2,5 GY - Potential collective terminal



3214016

<https://www.phoenixcontact.com/us/products/3214016>

## Approvals

To download certificates, visit the product detail page: <https://www.phoenixcontact.com/us/products/3214016>



**EAC**

Approval ID: RU C-DE.BL08.B.00644

# PTU 16/14X2,5 GY - Potential collective terminal



3214016

<https://www.phoenixcontact.com/us/products/3214016>

## Classifications

### ECLASS

ECLASS-11.0	27141120
ECLASS-13.0	27250119

### ETIM

ETIM 9.0	EC000897
----------	----------

### UNSPSC

UNSPSC 21.0	39121400
-------------	----------

# PTU 16/14X2,5 GY - Potential collective terminal



3214016

<https://www.phoenixcontact.com/us/products/3214016>

## Environmental product compliance

### EU RoHS

Fulfills EU RoHS substance requirements	Yes, No exemptions
---	--------------------

### China RoHS

Environment friendly use period (EFUP)	EFUP-E
	No hazardous substances above the limits

### EU REACH SVHC

REACH candidate substance (CAS No.)	No substance above 0.1 wt%
-------------------------------------	----------------------------

# PTU 16/14X2,5 GY - Potential collective terminal



3214016

<https://www.phoenixcontact.com/us/products/3214016>

## Accessories

### STP 5-3 - Marker carriers

0810562

<https://www.phoenixcontact.com/us/products/0810562>



Marker carriers, snaps into the ST 2,5-3L three-level spring-cage terminal block, can be marked with UC-TM 5, UC-TMF 5, UCT-TM 5, UCT-TMF 5, ZB 5, or ZBF 5, gray, unlabeled, mounting type: plug in, lettering field size: 5 x 10.5 mm

---

### CEC 2,5 - Filler plug

3062757

<https://www.phoenixcontact.com/us/products/3062757>



Cover for conductor shaft, 10-pos., for spring cage terminal blocks (ST) and terminal blocks with push-in technology (PT) with a width of 5.2 mm



# PTU 16/14X2,5 GY - Potential collective terminal



3214016

<https://www.phoenixcontact.com/us/products/3214016>

## STP 5-2 - Marker carriers

0800967

<https://www.phoenixcontact.com/us/products/0800967>



Marker carriers, snaps into STTB 2,5, STTB 4, PTTB 2,5, and PTTB 4 double-level spring-cage terminal blocks, can be marked with UC-TM 5, UC-TMF 5, UCT-TM 5, UCT-TMF 5, ZB 5, or ZBF 5, gray, unlabeled, mounting type: plug in, lettering field size: 5 x 10.5 mm

---

## NS 35/ 7,5 PERF 2000MM - DIN rail perforated

0801733

<https://www.phoenixcontact.com/us/products/0801733>



DIN rail perforated, Pack of 25 (50 m), acc. to EN 60715, material: Steel, galvanized, passivated with a thick layer, Standard profile, color: silver

## PTU 16/14X2,5 GY - Potential collective terminal

3214016

<https://www.phoenixcontact.com/us/products/3214016>



## NS 35/ 7,5 UNPERF 2000MM - DIN rail, unperforated

0801681

<https://www.phoenixcontact.com/us/products/0801681>



DIN rail, unperforated, Pack of 25 (50 m), acc. to EN 60715, material: Steel, galvanized, passivated with a thick layer, Standard profile, color: silver

---

## NS 35/ 7,5 WH PERF 2000MM - DIN rail perforated

1204119

<https://www.phoenixcontact.com/us/products/1204119>



DIN rail perforated, Pack of 25 (50 m), acc. to EN 60715, material: Steel, Galvanized, white passivated, Standard profile, color: silver

## PTU 16/14X2,5 GY - Potential collective terminal

3214016

<https://www.phoenixcontact.com/us/products/3214016>



## NS 35/ 7,5 WH UNPERF 2000MM-VPE 10 - DIN rail, unperforated

1204122

<https://www.phoenixcontact.com/us/products/1204122>



DIN rail, unperforated, Pack of 10 (20 m), acc. to EN 60715, material: Steel, Galvanized, white passivated, Standard profile, color: silver

---

## NS 35/ 7,5 AL UNPERF 2000MM - DIN rail, unperforated

0801704

<https://www.phoenixcontact.com/us/products/0801704>



DIN rail, unperforated, Pack of 25 (50 m), acc. to EN 60715, material: Aluminum, uncoated, Standard profile, color: silver

# PTU 16/14X2,5 GY - Potential collective terminal



3214016

<https://www.phoenixcontact.com/us/products/3214016>

## NS 35/ 7,5 ZN PERF 2000MM - DIN rail perforated

1206421

<https://www.phoenixcontact.com/us/products/1206421>



DIN rail perforated, Pack of 25 (50 m), acc. to EN 60715, material: Steel, galvanized, Standard profile, color: silver

---

## NS 35/ 7,5 ZN UNPERF 2000MM - DIN rail, unperforated

1206434

<https://www.phoenixcontact.com/us/products/1206434>



DIN rail, unperforated, Pack of 25 (50 m), acc. to EN 60715, material: Steel, galvanized, Standard profile, color: silver

# PTU 16/14X2,5 GY - Potential collective terminal

3214016

<https://www.phoenixcontact.com/us/products/3214016>



## NS 35/ 7,5 CU UNPERF 2000MM-VPE 10 - DIN rail, unperforated

0801762

<https://www.phoenixcontact.com/us/products/0801762>



DIN rail, unperforated, Pack of 10 (20 m), acc. to EN 60715, material: Copper, uncoated, Standard profile, color: copper-colored

---

## NS 35/ 7,5 CAP - End cap

1206560

<https://www.phoenixcontact.com/us/products/1206560>

DIN rail end piece, for DIN rail NS 35/7.5



## PTU 16/14X2,5 GY - Potential collective terminal

3214016

<https://www.phoenixcontact.com/us/products/3214016>



### NS 35/15 PERF 2000MM - DIN rail perforated

1201730

<https://www.phoenixcontact.com/us/products/1201730>



DIN rail perforated, Pack of 25 (50 m), similar to EN 60715, material: Steel, galvanized, passivated with a thick layer, Standard profile, color: silver

---

### NS 35/15 UNPERF 2000MM - DIN rail, unperforated

1201714

<https://www.phoenixcontact.com/us/products/1201714>



DIN rail, unperforated, Pack of 25 (50 m), similar to EN 60715, material: Steel, galvanized, passivated with a thick layer, Standard profile, color: silver

## PTU 16/14X2,5 GY - Potential collective terminal

3214016

<https://www.phoenixcontact.com/us/products/3214016>



### NS 35/15 WH PERF 2000MM - DIN rail perforated

0806602

<https://www.phoenixcontact.com/us/products/0806602>



DIN rail perforated, Pack of 25 (50 m), similar to EN 60715, material: Steel, Galvanized, white passivated, Standard profile, color: white

---

### NS 35/15 WH UNPERF 2000MM-VPE 10 - DIN rail, unperforated

1204135

<https://www.phoenixcontact.com/us/products/1204135>



DIN rail, unperforated, Pack of 10 (20 m), similar to EN 60715, material: Steel, Galvanized, white passivated, Standard profile, color: silver

# PTU 16/14X2,5 GY - Potential collective terminal



3214016

<https://www.phoenixcontact.com/us/products/3214016>

## NS 35/15 AL UNPERF 2000MM - DIN rail, unperforated

1201756

<https://www.phoenixcontact.com/us/products/1201756>



DIN rail, unperforated, similar to EN 60715, material: Aluminum, uncoated, Standard profile, color: silver

---

## NS 35/15 ZN PERF 2000MM - DIN rail perforated

1206599

<https://www.phoenixcontact.com/us/products/1206599>



DIN rail perforated, Pack of 25 (50 m), similar to EN 60715, material: Steel, galvanized, Standard profile, color: silver



# PTU 16/14X2,5 GY - Potential collective terminal

3214016

<https://www.phoenixcontact.com/us/products/3214016>



## NS 35/15 ZN UNPERF 2000MM - DIN rail, unperforated

1206586

<https://www.phoenixcontact.com/us/products/1206586>



DIN rail, unperforated, Pack of 25 (50 m), similar to EN 60715, material: Steel, galvanized, Standard profile, color: silver

---

## NS 35/15 CU UNPERF 2000MM-VPE 10 - DIN rail, unperforated

1201895

<https://www.phoenixcontact.com/us/products/1201895>



DIN rail, unperforated, Pack of 10 (20 m), similar to EN 60715, material: Copper, uncoated, Standard profile, color: copper-colored

# PTU 16/14X2,5 GY - Potential collective terminal

3214016

<https://www.phoenixcontact.com/us/products/3214016>



## NS 35/15 CAP - End cap

1206573

<https://www.phoenixcontact.com/us/products/1206573>

DIN rail end piece, for DIN rail NS 35/15



---

## NS 35/15-2,3 UNPERF 2000MM-VPE 10 - DIN rail, unperforated

1201798

<https://www.phoenixcontact.com/us/products/1201798>

DIN rail, unperforated, Pack of 10 (20 m), acc. to EN 60715, material: Steel, galvanized, passivated with a thick layer, Standard profile 2.3 mm, color: silver



# PTU 16/14X2,5 GY - Potential collective terminal



3214016

<https://www.phoenixcontact.com/us/products/3214016>

## CLIPFIX 35 - End bracket

3022218

<https://www.phoenixcontact.com/us/products/3022218>



Quick mounting end clamp for NS 35/7,5 DIN rail or NS 35/15 DIN rail, with marking option, width: 9.5 mm, color: gray

---

## CLIPFIX 35-5 - End bracket

3022276

<https://www.phoenixcontact.com/us/products/3022276>



Quick mounting end clamp for NS 35/7,5 DIN rail or NS 35/15 DIN rail, with marking option, with parking option for FBS...5, FBS...6, KSS 5, KSS 6, width: 5.15 mm, color: gray

# PTU 16/14X2,5 GY - Potential collective terminal

3214016

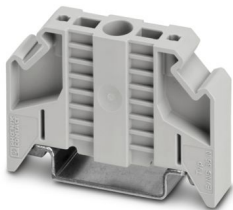
<https://www.phoenixcontact.com/us/products/3214016>

## E/NS 35 N - End bracket

0800886

<https://www.phoenixcontact.com/us/products/0800886>

End clamp, width: 9.5 mm, color: gray



---

## E/UK - End bracket

1201442

<https://www.phoenixcontact.com/us/products/1201442>

End bracket, Mounting on a DIN rail NS 32 or NS 35, material: PA, color: gray



# PTU 16/14X2,5 GY - Potential collective terminal



3214016

<https://www.phoenixcontact.com/us/products/3214016>

## E/UK 1 - End bracket

1201413

<https://www.phoenixcontact.com/us/products/1201413>



End clamps, for supporting the ends of double-level and three-level terminal blocks, width: 10 mm, color: gray

---

## SZS 1,0X4,0 VDE - Screwdriver

1205066

<https://www.phoenixcontact.com/us/products/1205066>



Screwdriver, slot-headed, VDE insulated, size: 1.0 x 4.0 x 100 mm, 2-component grip, with non-slip grip

# PTU 16/14X2,5 GY - Potential collective terminal



3214016

<https://www.phoenixcontact.com/us/products/3214016>

## SZF 2-0,8X4,0 - Screwdriver

1204520

<https://www.phoenixcontact.com/us/products/1204520>



Actuation tool, for ST terminal blocks, also suitable for use as a bladed screwdriver, size: 0.8 x 4.0 x 100 mm, 2-component grip, with non-slip grip

---

## SZF 1-0,6X3,5 - Screwdriver

1204517

<https://www.phoenixcontact.com/us/products/1204517>



Actuation tool, for ST terminal blocks, also suitable for use as a bladed screwdriver, size: 0.6 x 3.5 x 100 mm, 2-component grip, with non-slip grip

---

Phoenix Contact 2024 © - all rights reserved  
<https://www.phoenixcontact.com>

Phoenix Contact USA  
586 Fulling Mill Road  
Middletown, PA 17057, United States  
(+717) 944-1300  
[info@phoenixcon.com](mailto:info@phoenixcon.com)