

PTTB 1,5/S/2P BK - Double-level terminal block



3212444

<https://www.phoenixcontact.com/us/products/3212444>

Please be informed that the data shown in this PDF document is generated from our online catalog. Please find the complete data in the user documentation. Our general terms of use for downloads are valid.



Double-level terminal block, Current and voltage are determined by the plug used., nom. voltage: 500 V, nominal current: 16 A, connection method: Push-in / plug connection, 1st and 2nd level, Rated cross section: 1.5 mm², cross section: 0.14 mm² - 1.5 mm², mounting type: NS 35/7,5, NS 35/15, color: black

Your advantages

- The Push-in connection terminal blocks are characterized by the system features of the CLIPLINE complete system and by easy and tool-free wiring of conductors with ferrules or solid conductors
- The compact design and front connection enable wiring in a confined space
- In addition to the testing option in the double function shaft, all terminal blocks provide an additional test pick-off
- Tested for railway applications

Commercial data

Item number	3212444
Packing unit	50 pc
Minimum order quantity	50 pc
Sales key	BE22
Product key	BE2241
GTIN	4055626012834
Weight per piece (including packing)	6.23 g
Weight per piece (excluding packing)	6.23 g
Customs tariff number	85369010
Country of origin	DE

PTTB 1,5/S/2P BK - Double-level terminal block



3212444

<https://www.phoenixcontact.com/us/products/3212444>

Technical data

Notes

General	Current and voltage are determined by the plug used.
---------	--

Product properties

Product type	Plug-in terminal block
Area of application	Railway industry
	Machine building
	Plant engineering
Number of connections	4
Number of rows	2
Potentials	2

Insulation characteristics

Overvoltage category	III
Degree of pollution	3

Electrical properties

Rated surge voltage	6 kV
Maximum power dissipation for nominal condition	0.56 W

Connection data

Number of connections per level	2
Nominal cross section	1.5 mm ²

1st and 2nd level

Stripping length	8 mm
Internal cylindrical gage	A1 / B1
Connection in acc. with standard	IEC 61984
Conductor cross section rigid	0.14 mm ² ... 1.5 mm ²
Cross section AWG	26 ... 16 (converted acc. to IEC)
Conductor cross section flexible	0.14 mm ² ... 1.5 mm ²
Conductor cross section, flexible [AWG]	26 ... 16 (converted acc. to IEC)
Conductor cross-section flexible (ferrule without plastic sleeve)	0.14 mm ² ... 1.5 mm ²
Flexible conductor cross section (ferrule with plastic sleeve)	0.14 mm ² ... 1 mm ² Using the AI-S 1-8 TQ ferrule, Item No. 1200293, is recommended
Nominal current	16 A (observe derating)
Maximum load current	16 A (with 1.5 mm ² conductor cross section)
Nominal voltage	500 V
Nominal cross section	1.5 mm ²

1st and 2nd level Connection cross sections directly pluggable

Conductor cross section rigid	0.25 mm ² ... 1.5 mm ²
Conductor cross-section flexible (ferrule without plastic sleeve)	0.34 mm ² ... 1.5 mm ²

PTTB 1,5/S/2P BK - Double-level terminal block



3212444

<https://www.phoenixcontact.com/us/products/3212444>

Flexible conductor cross section (ferrule with plastic sleeve)	0.34 mm ² ... 1 mm ²
--	--

Dimensions

Width	3.5 mm
End cover width	2.2 mm
Height	69.3 mm
Depth on NS 35/7,5	42.6 mm
Depth on NS 35/15	50.1 mm

Material specifications

Color	black
Flammability rating according to UL 94	V0
Insulating material group	I
Insulating material	PA
Static insulating material application in cold	-60 °C
Temperature index of insulation material (DIN EN 60216-1 (VDE 0304-21))	130 °C
Relative insulation material temperature index (Elec., UL 746 B)	130 °C
Fire protection for rail vehicles (DIN EN 45545-2) R22	HL 1 - HL 3
Fire protection for rail vehicles (DIN EN 45545-2) R23	HL 1 - HL 3
Fire protection for rail vehicles (DIN EN 45545-2) R24	HL 1 - HL 3
Fire protection for rail vehicles (DIN EN 45545-2) R26	HL 1 - HL 3
Calorimetric heat release NFPA 130 (ASTM E 1354)	28 MJ/kg
Surface flammability NFPA 130 (ASTM E 162)	passed
Specific optical density of smoke NFPA 130 (ASTM E 662)	passed
Smoke gas toxicity NFPA 130 (SMP 800C)	passed

Mechanical properties

Mechanical data

Open side panel	Yes
-----------------	-----

Environmental and real-life conditions

Ambient conditions

Ambient temperature (operation)	-60 °C (max. operating temperature see derating curve)
Ambient temperature (storage/transport)	-25 °C ... 60 °C (for a short time, no longer than 24 h, -60°C to +70°C)
Ambient temperature (assembly)	-5 °C ... 70 °C
Ambient temperature (actuation)	-5 °C ... 70 °C
Permissible humidity (operation)	20 % ... 90 %
Permissible humidity (storage/transport)	30 % ... 70 %

Standards and regulations

Connection in acc. with standard	IEC 61984
----------------------------------	-----------

PTTB 1,5/S/2P BK - Double-level terminal block



3212444

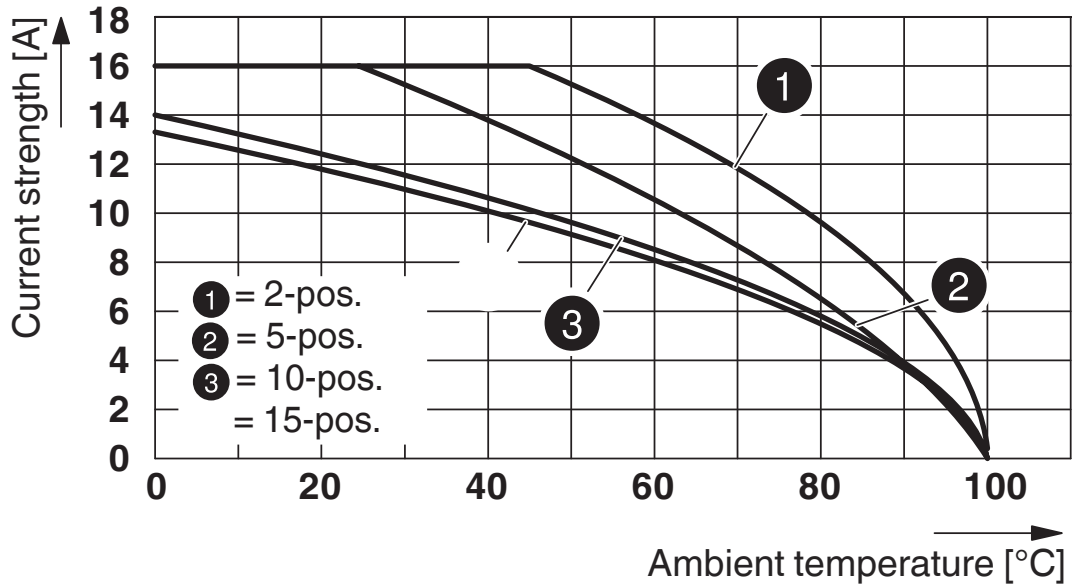
<https://www.phoenixcontact.com/us/products/3212444>

Mounting

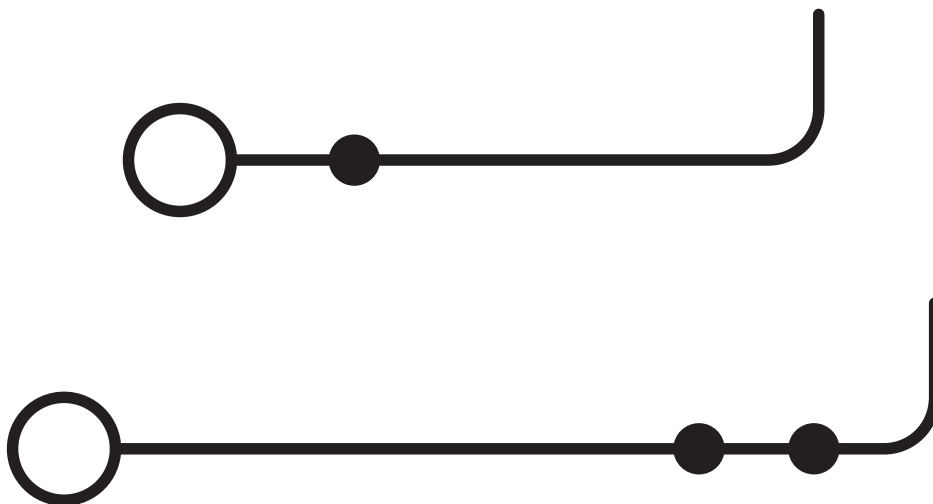
Mounting type	NS 35/7,5
	NS 35/15

Drawings

Diagram



Circuit diagram



PTTB 1,5/S/2P BK - Double-level terminal block



3212444

<https://www.phoenixcontact.com/us/products/3212444>

Approvals

To download certificates, visit the product detail page: <https://www.phoenixcontact.com/us/products/3212444>

DNV

Approval ID: TAE00003JE



CSA

Approval ID: 2030668

	Nominal voltage U_N	Nominal current I_N	Cross section AWG	Cross section mm^2
Use group B	300 V	15 A	26 - 14	-
Use group C	300 V	15 A	26 - 14	-
Use group D	600 V	5 A	26 - 14	-



IECEE CB Scheme

Approval ID: DE1-65179

	Nominal voltage U_N	Nominal current I_N	Cross section AWG	Cross section mm^2
	500 V	-	-	0.14 - 1.5



EAC

Approval ID: RU C-DE.BL08.B.00644



cULus Recognized

Approval ID: E60425

	Nominal voltage U_N	Nominal current I_N	Cross section AWG	Cross section mm^2
Use group B	300 V	15 A	26 - 14	-
Use group C	300 V	15 A	26 - 14	-
Use group D	600 V	5 A	26 - 14	-



LR

Approval ID: LR2371832TA



NK

Approval ID: 14ME0912

PTTB 1,5/S/2P BK - Double-level terminal block



3212444

<https://www.phoenixcontact.com/us/products/3212444>



BV

Approval ID: 39979/B0 BV



VDE Gutachten mit Fertigungsüberwachung

Approval ID: 40034766

	Nominal voltage U_N	Nominal current I_N	Cross section AWG	Cross section mm^2
	500 V	-	-	-

PTTB 1,5/S/2P BK - Double-level terminal block



3212444

<https://www.phoenixcontact.com/us/products/3212444>

Classifications

ECLASS

ECLASS-11.0	27141120
ECLASS-13.0	27250117

ETIM

ETIM 9.0	EC000897
----------	----------

UNSPSC

UNSPSC 21.0	39121400
-------------	----------

PTTB 1,5/S/2P BK - Double-level terminal block



3212444

<https://www.phoenixcontact.com/us/products/3212444>

Environmental product compliance

EU RoHS

Fulfills EU RoHS substance requirements	Yes, No exemptions
---	--------------------

China RoHS

Environment friendly use period (EFUP)	EFUP-E
	No hazardous substances above the limits

EU REACH SVHC

REACH candidate substance (CAS No.)	No substance above 0.1 wt%
-------------------------------------	----------------------------

PTTB 1,5/S/2P BK - Double-level terminal block

3212444

<https://www.phoenixcontact.com/us/products/3212444>

Accessories

 Note: Applying some accessories below might limit this product.


FBS 2-3,5 - Plug-in bridge

3213014

<https://www.phoenixcontact.com/us/products/3213014>



Plug-in bridge, pitch: 3.5 mm, number of positions: 2, color: red

 Max. current carrying capacity: 17.5 A


FBS 3-3,5 - Plug-in bridge

3213027

<https://www.phoenixcontact.com/us/products/3213027>



Plug-in bridge, pitch: 3.5 mm, number of positions: 3, color: red

 Max. current carrying capacity: 17.5 A

PTTB 1,5/S/2P BK - Double-level terminal block

3212444

<https://www.phoenixcontact.com/us/products/3212444>


FBS 4-3,5 - Plug-in bridge

3213030

<https://www.phoenixcontact.com/us/products/3213030>



Plug-in bridge, pitch: 3.5 mm, number of positions: 4, color: red

 Max. current carrying capacity: 17.5 A

FBS 5-3,5 - Plug-in bridge

3213043

<https://www.phoenixcontact.com/us/products/3213043>



Plug-in bridge, pitch: 3.5 mm, number of positions: 5, color: red

 Max. current carrying capacity: 17.5 A

PTTB 1,5/S/2P BK - Double-level terminal block

3212444

<https://www.phoenixcontact.com/us/products/3212444>


FBS 10-3,5 - Plug-in bridge

3213056

<https://www.phoenixcontact.com/us/products/3213056>



Plug-in bridge, pitch: 3.5 mm, number of positions: 10, color: red

 Max. current carrying capacity: 17.5 A


FBS 20-3,5 - Plug-in bridge

3213069

<https://www.phoenixcontact.com/us/products/3213069>



Plug-in bridge, pitch: 3.5 mm, number of positions: 20, color: red

 Max. current carrying capacity: 17.5 A

PTTB 1,5/S/2P BK - Double-level terminal block

3212444

<https://www.phoenixcontact.com/us/products/3212444>


FBS 2-3,5 BU - Plug-in bridge

3213086

<https://www.phoenixcontact.com/us/products/3213086>



Plug-in bridge, pitch: 3.5 mm, number of positions: 2, color: blue

 Max. current carrying capacity: 17.5 A


FBS 3-3,5 BU - Plug-in bridge

3213099

<https://www.phoenixcontact.com/us/products/3213099>



Plug-in bridge, pitch: 3.5 mm, number of positions: 3, color: blue

 Max. current carrying capacity: 17.5 A

PTTB 1,5/S/2P BK - Double-level terminal block

3212444

<https://www.phoenixcontact.com/us/products/3212444>


FBS 4-3,5 BU - Plug-in bridge

3213109

<https://www.phoenixcontact.com/us/products/3213109>



Plug-in bridge, pitch: 3.5 mm, number of positions: 4, color: blue

 Max. current carrying capacity: 17.5 A


FBS 5-3,5 BU - Plug-in bridge

3213112

<https://www.phoenixcontact.com/us/products/3213112>



Plug-in bridge, pitch: 3.5 mm, number of positions: 5, color: blue

 Max. current carrying capacity: 17.5 A

PTTB 1,5/S/2P BK - Double-level terminal block

3212444

<https://www.phoenixcontact.com/us/products/3212444>


FBS 10-3,5 BU - Plug-in bridge

3213125

<https://www.phoenixcontact.com/us/products/3213125>



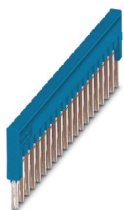
Plug-in bridge, pitch: 3.5 mm, number of positions: 10, color: blue

 Max. current carrying capacity: 17.5 A


FBS 20-3,5 BU - Plug-in bridge

3213138

<https://www.phoenixcontact.com/us/products/3213138>



Plug-in bridge, pitch: 3.5 mm, number of positions: 20, color: blue

 Max. current carrying capacity: 17.5 A

PTTB 1,5/S/2P BK - Double-level terminal block

3212444

<https://www.phoenixcontact.com/us/products/3212444>


FBS 2-3,5 GY - Plug-in bridge

3213153

<https://www.phoenixcontact.com/us/products/3213153>



Plug-in bridge, pitch: 3.5 mm, number of positions: 2, color: gray

 Max. current carrying capacity: 17.5 A

FBS 3-3,5 GY - Plug-in bridge

3213167

<https://www.phoenixcontact.com/us/products/3213167>



Plug-in bridge, pitch: 3.5 mm, number of positions: 3, color: gray

 Max. current carrying capacity: 17.5 A

PTTB 1,5/S/2P BK - Double-level terminal block

3212444

<https://www.phoenixcontact.com/us/products/3212444>


FBS 4-3,5 GY - Plug-in bridge

3213180

<https://www.phoenixcontact.com/us/products/3213180>



Plug-in bridge, pitch: 3.5 mm, number of positions: 4, color: gray

 Max. current carrying capacity: 17.5 A


FBS 5-3,5 GY - Plug-in bridge

3213183

<https://www.phoenixcontact.com/us/products/3213183>



Plug-in bridge, pitch: 3.5 mm, number of positions: 5, color: gray

 Max. current carrying capacity: 17.5 A

PTTB 1,5/S/2P BK - Double-level terminal block

3212444

<https://www.phoenixcontact.com/us/products/3212444>


FBS 10-3,5 GY - Plug-in bridge

3213196

<https://www.phoenixcontact.com/us/products/3213196>



Plug-in bridge, pitch: 3.5 mm, number of positions: 10, color: gray

 Max. current carrying capacity: 17.5 A


FBS 20-3,5 GY - Plug-in bridge

3213206

<https://www.phoenixcontact.com/us/products/3213206>



Plug-in bridge, pitch: 3.5 mm, number of positions: 20, color: gray

 Max. current carrying capacity: 17.5 A

PTTB 1,5/S/2P BK - Double-level terminal block

3212444

<https://www.phoenixcontact.com/us/products/3212444>



FBS 1,5/S-PV - Potential bridge

3216263

<https://www.phoenixcontact.com/us/products/3216263>



Vertical potential bridge, to connect the upper and lower level

ATP-STTB 4 - Partition plate

3030747

<https://www.phoenixcontact.com/us/products/3030747>



Partition plate, depth: 53 mm, width: 2 mm, height: 88.7 mm, color: gray

PTTB 1,5/S/2P BK - Double-level terminal block



3212444

<https://www.phoenixcontact.com/us/products/3212444>

D-PTTB 1,5/S/2P - End cover

3212471

<https://www.phoenixcontact.com/us/products/3212471>

End cover, depth: 34.9 mm, width: 2.2 mm, height: 69.3 mm, color: gray



PC - Coding star

3040588

<https://www.phoenixcontact.com/us/products/3040588>

Coding star, 4-section, depth: 6 mm, width: 3 mm, height: 3 mm, color: red



PTTB 1,5/S/2P BK - Double-level terminal block



3212444

<https://www.phoenixcontact.com/us/products/3212444>

AI-S 1 - 8 TQ - Ferrule

1200293

<https://www.phoenixcontact.com/us/products/1200293>



Ferrule, S-Slimline, sleeve length: 8 mm, color: turquoise

NS 35/ 7,5 PERF 2000MM - DIN rail perforated

0801733

<https://www.phoenixcontact.com/us/products/0801733>



DIN rail perforated, Pack of 25 (50 m), acc. to EN 60715, material: Steel, galvanized, passivated with a thick layer, Standard profile, color: silver

PTTB 1,5/S/2P BK - Double-level terminal block

3212444

<https://www.phoenixcontact.com/us/products/3212444>



NS 35/ 7,5 UNPERF 2000MM - DIN rail, unperforated

0801681

<https://www.phoenixcontact.com/us/products/0801681>



DIN rail, unperforated, Pack of 25 (50 m), acc. to EN 60715, material: Steel, galvanized, passivated with a thick layer, Standard profile, color: silver

NS 35/ 7,5 WH PERF 2000MM - DIN rail perforated

1204119

<https://www.phoenixcontact.com/us/products/1204119>



DIN rail perforated, Pack of 25 (50 m), acc. to EN 60715, material: Steel, Galvanized, white passivated, Standard profile, color: silver

PTTB 1,5/S/2P BK - Double-level terminal block

3212444

<https://www.phoenixcontact.com/us/products/3212444>



NS 35/ 7,5 WH UNPERF 2000MM-VPE 10 - DIN rail, unperforated

1204122

<https://www.phoenixcontact.com/us/products/1204122>



DIN rail, unperforated, Pack of 10 (20 m), acc. to EN 60715, material: Steel, Galvanized, white passivated, Standard profile, color: silver

NS 35/ 7,5 AL UNPERF 2000MM - DIN rail, unperforated

0801704

<https://www.phoenixcontact.com/us/products/0801704>



DIN rail, unperforated, Pack of 25 (50 m), acc. to EN 60715, material: Aluminum, uncoated, Standard profile, color: silver

PTTB 1,5/S/2P BK - Double-level terminal block

3212444

<https://www.phoenixcontact.com/us/products/3212444>



NS 35/ 7,5 ZN PERF 2000MM - DIN rail perforated

1206421

<https://www.phoenixcontact.com/us/products/1206421>



DIN rail perforated, Pack of 25 (50 m), acc. to EN 60715, material: Steel, galvanized, Standard profile, color: silver

NS 35/ 7,5 ZN UNPERF 2000MM - DIN rail, unperforated

1206434

<https://www.phoenixcontact.com/us/products/1206434>



DIN rail, unperforated, Pack of 25 (50 m), acc. to EN 60715, material: Steel, galvanized, Standard profile, color: silver

PTTB 1,5/S/2P BK - Double-level terminal block

3212444

<https://www.phoenixcontact.com/us/products/3212444>



NS 35/ 7,5 CU UNPERF 2000MM-VPE 10 - DIN rail, unperforated

0801762

<https://www.phoenixcontact.com/us/products/0801762>



DIN rail, unperforated, Pack of 10 (20 m), acc. to EN 60715, material: Copper, uncoated, Standard profile, color: copper-colored

NS 35/ 7,5 CAP - End cap

1206560

<https://www.phoenixcontact.com/us/products/1206560>

DIN rail end piece, for DIN rail NS 35/7.5



PTTB 1,5/S/2P BK - Double-level terminal block



3212444

<https://www.phoenixcontact.com/us/products/3212444>

NS 35/15 PERF 2000MM - DIN rail perforated

1201730

<https://www.phoenixcontact.com/us/products/1201730>



DIN rail perforated, Pack of 25 (50 m), similar to EN 60715, material: Steel, galvanized, passivated with a thick layer, Standard profile, color: silver

NS 35/15 UNPERF 2000MM - DIN rail, unperforated

1201714

<https://www.phoenixcontact.com/us/products/1201714>



DIN rail, unperforated, Pack of 25 (50 m), similar to EN 60715, material: Steel, galvanized, passivated with a thick layer, Standard profile, color: silver

PTTB 1,5/S/2P BK - Double-level terminal block

3212444

<https://www.phoenixcontact.com/us/products/3212444>



NS 35/15 WH PERF 2000MM - DIN rail perforated

0806602

<https://www.phoenixcontact.com/us/products/0806602>



DIN rail perforated, Pack of 25 (50 m), similar to EN 60715, material: Steel, Galvanized, white passivated, Standard profile, color: white

NS 35/15 WH UNPERF 2000MM-VPE 10 - DIN rail, unperforated

1204135

<https://www.phoenixcontact.com/us/products/1204135>



DIN rail, unperforated, Pack of 10 (20 m), similar to EN 60715, material: Steel, Galvanized, white passivated, Standard profile, color: silver

PTTB 1,5/S/2P BK - Double-level terminal block



3212444

<https://www.phoenixcontact.com/us/products/3212444>

NS 35/15 AL UNPERF 2000MM - DIN rail, unperforated

1201756

<https://www.phoenixcontact.com/us/products/1201756>



DIN rail, unperforated, similar to EN 60715, material: Aluminum, uncoated, Standard profile, color: silver

NS 35/15 ZN PERF 2000MM - DIN rail perforated

1206599

<https://www.phoenixcontact.com/us/products/1206599>



DIN rail perforated, Pack of 25 (50 m), similar to EN 60715, material: Steel, galvanized, Standard profile, color: silver

PTTB 1,5/S/2P BK - Double-level terminal block

3212444

<https://www.phoenixcontact.com/us/products/3212444>



NS 35/15 ZN UNPERF 2000MM - DIN rail, unperforated

1206586

<https://www.phoenixcontact.com/us/products/1206586>



DIN rail, unperforated, Pack of 25 (50 m), similar to EN 60715, material: Steel, galvanized, Standard profile, color: silver

NS 35/15 CU UNPERF 2000MM-VPE 10 - DIN rail, unperforated

1201895

<https://www.phoenixcontact.com/us/products/1201895>



DIN rail, unperforated, Pack of 10 (20 m), similar to EN 60715, material: Copper, uncoated, Standard profile, color: copper-colored

PTTB 1,5/S/2P BK - Double-level terminal block

3212444

<https://www.phoenixcontact.com/us/products/3212444>

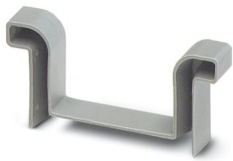


NS 35/15 CAP - End cap

1206573

<https://www.phoenixcontact.com/us/products/1206573>

DIN rail end piece, for DIN rail NS 35/15



NS 35/15-2,3 UNPERF 2000MM-VPE 10 - DIN rail, unperforated

1201798

<https://www.phoenixcontact.com/us/products/1201798>

DIN rail, unperforated, Pack of 10 (20 m), acc. to EN 60715, material: Steel, galvanized, passivated with a thick layer, Standard profile 2.3 mm, color: silver



PTTB 1,5/S/2P BK - Double-level terminal block



3212444

<https://www.phoenixcontact.com/us/products/3212444>

MPS-MT - Test plug

0201744

<https://www.phoenixcontact.com/us/products/0201744>



Test plug, with solder connection up to 1 mm² conductor cross section, number of positions: 1, color: gray

MPS-IH WH - Insulating sleeve

0201663

<https://www.phoenixcontact.com/us/products/0201663>

Insulating sleeve, color: white



PTTB 1,5/S/2P BK - Double-level terminal block

3212444

<https://www.phoenixcontact.com/us/products/3212444>



MPS-IH RD - Insulating sleeve

0201676

<https://www.phoenixcontact.com/us/products/0201676>

Insulating sleeve, color: red

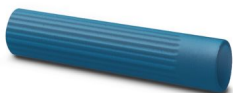


MPS-IH BU - Insulating sleeve

0201689

<https://www.phoenixcontact.com/us/products/0201689>

Insulating sleeve, color: blue



PTTB 1,5/S/2P BK - Double-level terminal block

3212444

<https://www.phoenixcontact.com/us/products/3212444>

MPS-IH YE - Insulating sleeve

0201692

<https://www.phoenixcontact.com/us/products/0201692>

Insulating sleeve, color: yellow



MPS-IH GN - Insulating sleeve

0201702

<https://www.phoenixcontact.com/us/products/0201702>

Insulating sleeve, color: green



PTTB 1,5/S/2P BK - Double-level terminal block

3212444

<https://www.phoenixcontact.com/us/products/3212444>



MPS-IH GY - Insulating sleeve

0201728

<https://www.phoenixcontact.com/us/products/0201728>

Insulating sleeve, color: gray



MPS-IH BK - Insulating sleeve

0201731

<https://www.phoenixcontact.com/us/products/0201731>

Insulating sleeve, color: black



PTTB 1,5/S/2P BK - Double-level terminal block



3212444

<https://www.phoenixcontact.com/us/products/3212444>

PS-3,5 - Test plug

3031010

<https://www.phoenixcontact.com/us/products/3031010>

Test plug, Modular test plug, number of positions: 1, color: red



DP PS-3,5 - Spacer plate

3031011

<https://www.phoenixcontact.com/us/products/3031011>

Spacer plate, depth: 33.5 mm, width: 3.5 mm, height: 15.9 mm, number of positions: 1, color: red



PTTB 1,5/S/2P BK - Double-level terminal block

3212444

<https://www.phoenixcontact.com/us/products/3212444>



PS-3,5/E - Test plug

3031012

<https://www.phoenixcontact.com/us/products/3031012>

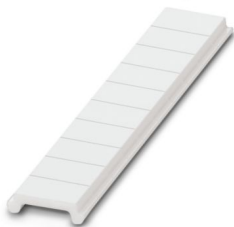


Test plug, Individual test plug, number of positions: 1, color: red

ZBF 3,5:UNBEDRUCKT - Zack Marker strip, flat

0829392

<https://www.phoenixcontact.com/us/products/0829392>



Zack Marker strip, flat, Strip, white, unlabeled, can be labeled with: PLOTMARK, CMS-P1-PLOTTER, mounting type: snapped, for terminal block width: 3.5 mm, lettering field size: 3.5 x 5.2 mm, Number of individual labels: 10

PTTB 1,5/S/2P BK - Double-level terminal block



3212444

<https://www.phoenixcontact.com/us/products/3212444>

ZBF 3,5 CUS - Zack Marker strip, flat

0829394

<https://www.phoenixcontact.com/us/products/0829394>



Zack Marker strip, flat, can be ordered: Strip, white, labeled according to customer specifications, mounting type: snap into flat marker groove, for terminal block width: 3.5 mm, lettering field size: 3.5 x 5.2 mm, Number of individual labels: 10

ZBF 3,5,LGS:FORTL.ZAHLEN - Zack Marker strip, flat

0801406

<https://www.phoenixcontact.com/us/products/0801406>



Zack Marker strip, flat, Strip, white, labeled, printed horizontally: consecutive numbers 1 ... 10, 11 ... 20, etc. up to 91 ... 100, mounting type: snapped, for terminal block width: 3.5 mm, lettering field size: 5.15 x 3.5 mm, Number of individual labels: 10

PTTB 1,5/S/2P BK - Double-level terminal block



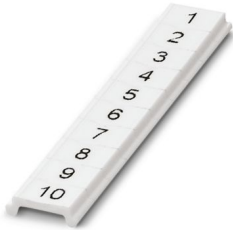
3212444

<https://www.phoenixcontact.com/us/products/3212444>

ZBF 3,5,QR:FORTL.ZAHLEN - Zack Marker strip, flat

0801407

<https://www.phoenixcontact.com/us/products/0801407>



Zack Marker strip, flat, Strip, white, labeled, Printed vertically: consecutive numbers 1 ... 10, 11 ... 20, etc. up to 91 ... 100, mounting type: snapped, for terminal block width: 3.5 mm, lettering field size: 5.15 x 3.5 mm, Number of individual labels: 10

UCT-TMF 3,5 - Marker for terminal blocks

0829486

<https://www.phoenixcontact.com/us/products/0829486>



Marker for terminal blocks, Sheet, white, unlabeled, can be labeled with: TOPMARK NEO, TOPMARK LASER, BLUEMARK ID COLOR, BLUEMARK ID, BLUEMARK CLED, THERMOMARK PRIME, THERMOMARK CARD 2.0, THERMOMARK CARD, mounting type: snapped, for terminal block width: 3.5 mm, lettering field size: 2.7 x 4.7 mm, Number of individual labels: 108

PTTB 1,5/S/2P BK - Double-level terminal block

3212444

<https://www.phoenixcontact.com/us/products/3212444>



UCT-TMF 3,5 CUS - Marker for terminal blocks

0829644

<https://www.phoenixcontact.com/us/products/0829644>



Marker for terminal blocks, can be ordered: by sheet, white, labeled according to customer specifications, mounting type: snap into flat marker groove, for terminal block width: 3.5 mm, lettering field size: 2.7 x 4.7 mm, Number of individual labels: 108

PP-H 1,5/S/1 - Plug

3212484

<https://www.phoenixcontact.com/us/products/3212484>



Plug, nom. voltage: 500 V, nominal current: 17.5 A, number of connections: 1, number of positions: 1, connection method: Push-in connection, 1 level, Rated cross section: 1.5 mm², cross section: 0.14 mm² - 1.5 mm², mounting type: Plug-in mounting, color: gray

PTTB 1,5/S/2P BK - Double-level terminal block



3212444

<https://www.phoenixcontact.com/us/products/3212444>

PP-H 1,5/S/1 BU - Plug

3212497

<https://www.phoenixcontact.com/us/products/3212497>



Plug, nom. voltage: 500 V, nominal current: 17.5 A, number of connections: 1, number of positions: 1, connection method: Push-in connection, 1 level, Rated cross section: 1.5 mm², cross section: 0.14 mm² - 1.5 mm², color: blue

PP-H 1,5/S/1 GNYE - Plug

3212507

<https://www.phoenixcontact.com/us/products/3212507>



Plug, nom. voltage: 500 V, nominal current: 17.5 A, number of connections: 1, number of positions: 1, connection method: Push-in connection, 1 level, Rated cross section: 1.5 mm², cross section: 0.14 mm² - 1.5 mm², color: green-yellow

PTTB 1,5/S/2P BK - Double-level terminal block



3212444

<https://www.phoenixcontact.com/us/products/3212444>

PP-H 1,5/S/2 - Plug

3212510

<https://www.phoenixcontact.com/us/products/3212510>



Plug, nom. voltage: 500 V, nominal current: 17.5 A, number of connections: 2, number of positions: 2, connection method: Push-in connection, 1 level, Rated cross section: 1.5 mm², cross section: 0.14 mm² - 1.5 mm², mounting type: Plug-in mounting, color: gray

PP-H 1,5/S/3 - Plug

3212523

<https://www.phoenixcontact.com/us/products/3212523>



Plug, nom. voltage: 500 V, nominal current: 17.5 A, number of connections: 3, number of positions: 3, connection method: Push-in connection, 1 level, Rated cross section: 1.5 mm², cross section: 0.14 mm² - 1.5 mm², mounting type: Plug-in mounting, color: gray

PTTB 1,5/S/2P BK - Double-level terminal block

3212444

<https://www.phoenixcontact.com/us/products/3212444>

PP-H 1,5/S/4 - Plug

3212536

<https://www.phoenixcontact.com/us/products/3212536>



Plug, nom. voltage: 500 V, nominal current: 17.5 A, number of connections: 4, number of positions: 4, connection method: Push-in connection, 1 level, Rated cross section: 1.5 mm², cross section: 0.14 mm² - 1.5 mm², mounting type: Plug-in mounting, color: gray

PP-H 1,5/S/5 - Plug

3212549

<https://www.phoenixcontact.com/us/products/3212549>



Plug, nom. voltage: 500 V, nominal current: 17.5 A, number of connections: 5, number of positions: 5, connection method: Push-in connection, 1 level, Rated cross section: 1.5 mm², cross section: 0.14 mm² - 1.5 mm², mounting type: Plug-in mounting, color: gray

PTTB 1,5/S/2P BK - Double-level terminal block

3212444

<https://www.phoenixcontact.com/us/products/3212444>

PP-H 1,5/S/6 - Plug

3212552

<https://www.phoenixcontact.com/us/products/3212552>



Plug, nom. voltage: 500 V, nominal current: 17.5 A, number of connections: 6, number of positions: 6, connection method: Push-in connection, 1 level, Rated cross section: 1.5 mm², cross section: 0.14 mm² - 1.5 mm², mounting type: Plug-in mounting, color: gray

PP-H 1,5/S/7 - Plug

3212565

<https://www.phoenixcontact.com/us/products/3212565>



Plug, nom. voltage: 500 V, nominal current: 17.5 A, number of connections: 7, number of positions: 7, connection method: Push-in connection, 1 level, Rated cross section: 1.5 mm², cross section: 0.14 mm² - 1.5 mm², color: gray

PTTB 1,5/S/2P BK - Double-level terminal block



3212444

<https://www.phoenixcontact.com/us/products/3212444>

PP-H 1,5/S/8 - Plug

3212578

<https://www.phoenixcontact.com/us/products/3212578>



Plug, nom. voltage: 500 V, nominal current: 17.5 A, number of connections: 8, number of positions: 8, connection method: Push-in connection, 1 level, Rated cross section: 1.5 mm², cross section: 0.14 mm² - 1.5 mm², mounting type: Plug-in mounting, color: gray

PP-H 1,5/S/9 - Plug

3212581

<https://www.phoenixcontact.com/us/products/3212581>



Plug, nom. voltage: 500 V, nominal current: 17.5 A, number of connections: 9, number of positions: 9, connection method: Push-in connection, 1 level, Rated cross section: 1.5 mm², cross section: 0.14 mm² - 1.5 mm², color: gray

PTTB 1,5/S/2P BK - Double-level terminal block

3212444

<https://www.phoenixcontact.com/us/products/3212444>

PP-H 1,5/S/10 - Plug

3212594

<https://www.phoenixcontact.com/us/products/3212594>



Plug, nom. voltage: 500 V, nominal current: 17.5 A, number of connections: 10, number of positions: 10, connection method: Push-in connection, 1 level, Rated cross section: 1.5 mm², cross section: 0.14 mm² - 1.5 mm², color: gray

PP-H 1,5/S/11 - Plug

3212604

<https://www.phoenixcontact.com/us/products/3212604>



Plug, nom. voltage: 500 V, nominal current: 17.5 A, number of connections: 11, number of positions: 11, connection method: Push-in connection, 1 level, Rated cross section: 1.5 mm², cross section: 0.14 mm² - 1.5 mm², color: gray

PTTB 1,5/S/2P BK - Double-level terminal block



3212444

<https://www.phoenixcontact.com/us/products/3212444>

PP-H 1,5/S/12 - Plug

3212617

<https://www.phoenixcontact.com/us/products/3212617>



Plug, nom. voltage: 500 V, nominal current: 17.5 A, number of connections: 12, number of positions: 12, connection method: Push-in connection, 1 level, Rated cross section: 1.5 mm², cross section: 0.14 mm² - 1.5 mm², color: gray

PP-H 1,5/S/13 - Plug

3212620

<https://www.phoenixcontact.com/us/products/3212620>



Plug, nom. voltage: 500 V, nominal current: 17.5 A, number of connections: 13, number of positions: 13, connection method: Push-in connection, 1 level, Rated cross section: 1.5 mm², cross section: 0.14 mm² - 1.5 mm², color: gray

PTTB 1,5/S/2P BK - Double-level terminal block



3212444

<https://www.phoenixcontact.com/us/products/3212444>

PP-H 1,5/S/14 - Plug

3212633

<https://www.phoenixcontact.com/us/products/3212633>



Plug, nom. voltage: 500 V, nominal current: 17.5 A, number of connections: 14, number of positions: 14, connection method: Push-in connection, 1 level, Rated cross section: 1.5 mm², cross section: 0.14 mm² - 1.5 mm², color: gray

PP-H 1,5/S/15 - Plug

3212646

<https://www.phoenixcontact.com/us/products/3212646>



Plug, nom. voltage: 500 V, nominal current: 17.5 A, number of connections: 15, number of positions: 15, connection method: Push-in connection, 1 level, Rated cross section: 1.5 mm², cross section: 0.14 mm² - 1.5 mm², color: gray

PTTB 1,5/S/2P BK - Double-level terminal block



3212444

<https://www.phoenixcontact.com/us/products/3212444>

PP-H 1,5/S/1-L - Plug

3212659

<https://www.phoenixcontact.com/us/products/3212659>



Plug, nom. voltage: 500 V, nominal current: 17.5 A, number of connections: 1, number of positions: 1, connection method: Push-in connection, 1 level, Rated cross section: 1.5 mm², cross section: 0.14 mm² - 1.5 mm², color: gray

PP-H 1,5/S/1-L BU - Plug

3212662

<https://www.phoenixcontact.com/us/products/3212662>



Plug, nom. voltage: 500 V, nominal current: 17.5 A, number of connections: 1, number of positions: 1, connection method: Push-in connection, 1 level, Rated cross section: 1.5 mm², cross section: 0.14 mm² - 1.5 mm², color: blue

PTTB 1,5/S/2P BK - Double-level terminal block



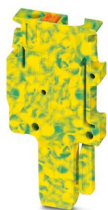
3212444

<https://www.phoenixcontact.com/us/products/3212444>

PP-H 1,5/S/1-L GNYE - Plug

3212675

<https://www.phoenixcontact.com/us/products/3212675>



Plug, nom. voltage: 500 V, nominal current: 17.5 A, number of connections: 1, number of positions: 1, connection method: Push-in connection, 1 level, Rated cross section: 1.5 mm², cross section: 0.14 mm² - 1.5 mm², color: green-yellow

PP-H 1,5/S/1-M - Plug

3212688

<https://www.phoenixcontact.com/us/products/3212688>



Plug, nom. voltage: 500 V, nominal current: 17.5 A, number of connections: 1, number of positions: 1, connection method: Push-in connection, 1 level, Rated cross section: 1.5 mm², cross section: 0.14 mm² - 1.5 mm², color: gray

PTTB 1,5/S/2P BK - Double-level terminal block



3212444

<https://www.phoenixcontact.com/us/products/3212444>

PP-H 1,5/S/1-M BU - Plug

3212691

<https://www.phoenixcontact.com/us/products/3212691>



Plug, nom. voltage: 500 V, nominal current: 17.5 A, number of connections: 1, number of positions: 1, connection method: Push-in connection, 1 level, Rated cross section: 1.5 mm², cross section: 0.14 mm² - 1.5 mm², color: blue

PP-H 1,5/S/1-M GNYE - Plug

3212701

<https://www.phoenixcontact.com/us/products/3212701>



Plug, nom. voltage: 500 V, nominal current: 17.5 A, number of connections: 1, number of positions: 1, connection method: Push-in connection, 1 level, Rated cross section: 1.5 mm², cross section: 0.14 mm² - 1.5 mm², color: green-yellow

PTTB 1,5/S/2P BK - Double-level terminal block



3212444

<https://www.phoenixcontact.com/us/products/3212444>

PP-H 1,5/S/1-R - Plug

3212714

<https://www.phoenixcontact.com/us/products/3212714>



Plug, nom. voltage: 500 V, nominal current: 17.5 A, number of connections: 1, number of positions: 1, connection method: Push-in connection, 1 level, Rated cross section: 1.5 mm², cross section: 0.14 mm² - 1.5 mm², color: gray

PP-H 1,5/S/1-R BU - Plug

3212727

<https://www.phoenixcontact.com/us/products/3212727>



Plug, nom. voltage: 500 V, nominal current: 17.5 A, number of connections: 1, number of positions: 1, connection method: Push-in connection, 1 level, Rated cross section: 1.5 mm², cross section: 0.14 mm² - 1.5 mm², color: blue

PTTB 1,5/S/2P BK - Double-level terminal block



3212444

<https://www.phoenixcontact.com/us/products/3212444>

PP-H 1,5/S/1-R GNYE - Plug

3212730

<https://www.phoenixcontact.com/us/products/3212730>



Plug, nom. voltage: 500 V, nominal current: 17.5 A, number of connections: 1, number of positions: 1, connection method: Push-in connection, 1 level, Rated cross section: 1.5 mm², cross section: 0.14 mm² - 1.5 mm², color: green-yellow

PZ 1,5/S/2 - Strain relief

3212918

<https://www.phoenixcontact.com/us/products/3212918>



Strain relief, width: 6.8 mm, height: 44.5 mm, number of positions: 2, color: black

PTTB 1,5/S/2P BK - Double-level terminal block



3212444

<https://www.phoenixcontact.com/us/products/3212444>

PRZ 1,5/S - Latching

3212905

<https://www.phoenixcontact.com/us/products/3212905>



Latching, length: 59 mm, color: orange

PR 1,5/S/2 - Latching

3212895

<https://www.phoenixcontact.com/us/products/3212895>



Latching, width: 6.8 mm, height: 28.9 mm, number of positions: 2, color: orange

PTTB 1,5/S/2P BK - Double-level terminal block



3212444

<https://www.phoenixcontact.com/us/products/3212444>

PR 1,5/S - Latching

3212882

<https://www.phoenixcontact.com/us/products/3212882>



Latching, width: 3.3 mm, height: 28.9 mm, number of positions: 1, color: orange

SZF 0-0,4X2,5 - Screwdriver

1204504

<https://www.phoenixcontact.com/us/products/1204504>



Actuation tool, for ST terminal blocks, also suitable for use as a bladed screwdriver, size: 0.4 x 2.5 x 75 mm, 2-component grip, with non-slip grip

PTTB 1,5/S/2P BK - Double-level terminal block



3212444

<https://www.phoenixcontact.com/us/products/3212444>

ST-BW 0 - Actuation tool

1200135

<https://www.phoenixcontact.com/us/products/1200135>

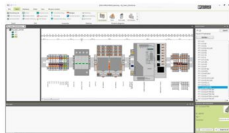
Actuation tool, for all 1.5 mm² spring cages from PT 1,5/S and FT 1,5/S



PROJECT COMPLETE - Software

1050453

<https://www.phoenixcontact.com/us/products/1050453>



Intuitive planning and marking software for configuring terminal strips and for professional marking of marking materials for terminal blocks, conductors, cables, devices, and systems. The software is available for download

PTTB 1,5/S/2P BK - Double-level terminal block



3212444

<https://www.phoenixcontact.com/us/products/3212444>

CRIMPFOX CENTRUS 6S - Crimping pliers

1213144

<https://www.phoenixcontact.com/us/products/1213144>



Crimping pliers, for uninsulated and insulated ferrules, DIN 46228 Part 1 and 4, from 0.14 mm² ... 6 mm², also for TWIN ferrules up to 2 x 4 mm², automatic cross section adjustment, lateral insertion, equipped with fall protection

CRIMPFOX CENTRUS 10S - Crimping pliers

1213154

<https://www.phoenixcontact.com/us/products/1213154>



Crimping pliers, for uninsulated and insulated ferrules, DIN 46228 Part 1 and 4, from 0.14 mm² ... 10 mm², also for TWIN ferrules up to 2 x 4 mm², automatic cross section adjustment, lateral insertion, equipped with fall protection

PTTB 1,5/S/2P BK - Double-level terminal block



3212444

<https://www.phoenixcontact.com/us/products/3212444>

CRIMPFOX CENTRUS 6H - Crimping pliers

1213146

<https://www.phoenixcontact.com/us/products/1213146>



Crimping pliers, for uninsulated and insulated ferrules, DIN 46228 Part 1 and 4, from 0.14 mm² ... 6 mm², also for TWIN ferrules up to 2 x 4 mm², automatic cross section adjustment, lateral insertion, equipped with fall protection

CRIMPFOX CENTRUS 10H - Crimping pliers

1213156

<https://www.phoenixcontact.com/us/products/1213156>



Crimping pliers, for uninsulated and insulated ferrules, DIN 46228 Part 1 and 4, from 0.14 mm² ... 10 mm², also for TWIN ferrules up to 2 x 4 mm², automatic cross section adjustment, lateral insertion, equipped with fall protection

PTTB 1,5/S/2P BK - Double-level terminal block

3212444

<https://www.phoenixcontact.com/us/products/3212444>

CRIMPFOX 10S - Crimping pliers

1212045

<https://www.phoenixcontact.com/us/products/1212045>



Crimping pliers, for ferrules without insulating collar according to DIN 46228 Part 1 and ferrules with insulating collar according to DIN 46228 Part 4, 0.14 mm² ... 10 mm², unlockable pressure lock, lateral entry

CRIMPFOX 6H - Crimping pliers

1212046

<https://www.phoenixcontact.com/us/products/1212046>



Crimping pliers, for ferrules without insulating collar according to DIN 46228 Part 1 and ferrules with insulating collar according to DIN 46228 Part 4, 0.14 mm² ... 6 mm², unlockable pressure lock, lateral entry

PTTB 1,5/S/2P BK - Double-level terminal block

3212444

<https://www.phoenixcontact.com/us/products/3212444>

CRIMPFOX 2,5-M - Crimping pliers

1212719

<https://www.phoenixcontact.com/us/products/1212719>



Crimping pliers, for ferrules without insulating collar according to DIN 46228 Part 1 and ferrules with insulating collar according to DIN 46228 Part 4, 0.25 mm² ... 2.5 mm², lateral entry, trapezoidal crimp

CRIMPFOX 6-M - Crimping pliers

1212720

<https://www.phoenixcontact.com/us/products/1212720>



Crimping pliers, for ferrules without insulating collar according to DIN 46228 Part 1 and ferrules with insulating collar according to DIN 46228 Part 4, 0.25 mm² ... 6.0 mm², lateral entry, trapezoidal crimp

PTTB 1,5/S/2P BK - Double-level terminal block



3212444

<https://www.phoenixcontact.com/us/products/3212444>

CRIMPFOX 6 - Crimping pliers

1212034

<https://www.phoenixcontact.com/us/products/1212034>



Crimping pliers, for ferrules without insulating collar according to DIN 46228 Part 1 and ferrules with insulating collar according to DIN 46228 Part 4, 0.25 mm² ... 6.0 mm², lateral entry, trapezoidal crimp

CRIMPFOX 6T - Crimping pliers

1212037

<https://www.phoenixcontact.com/us/products/1212037>



Crimping pliers, for ferrules without insulating collar according to DIN 46228 Part 1 and ferrules with insulating collar according to DIN 46228 Part 4, 0.25 mm² ... 6 mm², lateral entry, trapezoidal crimp

PTTB 1,5/S/2P BK - Double-level terminal block



3212444

<https://www.phoenixcontact.com/us/products/3212444>

CRIMPFOX 6T-F - Crimping pliers

1212038

<https://www.phoenixcontact.com/us/products/1212038>



Crimping pliers, for ferrules without insulating collar according to DIN 46228 Part 1 and ferrules with insulating collar according to DIN 46228 Part 4, 0.25 mm² ... 6 mm², front entry, trapezoidal crimp

CRIMPFOX 6S-F - Crimping pliers

1212043

<https://www.phoenixcontact.com/us/products/1212043>



Crimping pliers, for ferrules without insulating collar according to DIN 46228 Part 1 and ferrules with insulating collar according to DIN 46228 Part 4, 0.5 mm² ... 6 mm², front entry, square crimp

PTTB 1,5/S/2P BK - Double-level terminal block



3212444

<https://www.phoenixcontact.com/us/products/3212444>

CRIMPFOX-M - Crimping pliers

1212072

<https://www.phoenixcontact.com/us/products/1212072>



Basic pliers, for accommodating dies for a wide range of type of contacts

Phoenix Contact 2024 © - all rights reserved

<https://www.phoenixcontact.com>

Phoenix Contact USA
586 Fulling Mill Road
Middletown, PA 17057, United States
(+717) 944-1300
info@phoenixcon.com