

High-power stud terminal, Stud connection, Mounting type: Mounting rail TS 35/7.5, Rated cross-section: 35 mm<sup>2</sup>, Width: 27 mm, Colour: Beige

### Business data

Article number	<u>17170.2</u>
Article name	HSKG 35/M6/B/B BG
GTIN (EAN)	4044211189419
Packaging unit	10
Quantity unit	PC
Weight per piece (not including packaging)	80.69 g
Weight per piece (including packaging)	88.6 g
Unit of weight	G
Customs number	85369010
Country of origin	DE
Product description	High-power stud terminal
Colour	Beige

### Technical data

#### Dimensions

Length	107 mm
Length with TW/ADH	131 mm
Width	27 mm
Height TS 35/7.5	51 mm
Height TS 35/7.5 with TW/ADH	60 mm

#### Ratings

Rated voltage	1000 V
Rated current	125 A
Rated cross-section	35 mm <sup>2</sup>
Rated impulse voltage	8 kV
Overvoltage category	III
Contamination degree	3
Maximum power dissipation for nominal condition	4 W

#### Connection data

Connection principle	Stud connection
Connection position	Top
Connections	2
Number of terminals per level	2
Number of levels	1
Wire cross-section AWG, min.	14
Wire cross-section AWG, max.	1/0
Bolt head	Hexagon
Bolt thread	M 6
Tightening torque, min.	3 Nm
Tightening torque, max.	6 Nm
Contact wire range	≤ 50 mm <sup>2</sup>

#### Materials

Insulation housing	Polyamide 6.6
Flammability class UL 94	V-0
Working temperature, min.	-40 °C
Working temperature, max.	120 °C

### Technical data

#### Further technical data

Mounting type	Mounting rail TS 35/7,5
Spanner width (AF)	10 mm
Number of cross-connection channels	2
DIN 46234 / 1 cable lug per side, min.	2.5 mm <sup>2</sup>
DIN 46234 / 1 cable lug per side, max.	50 mm <sup>2</sup>
DIN 46234 / 2 cable lugs per side, min.	2.5 mm <sup>2</sup>
DIN 46234 / 2 cable lugs per side, max.	35 mm <sup>2</sup>
DIN 46235: 1 cable lug per side, max.	25 mm <sup>2</sup>
DIN 46235: 1 cable lug per side, min.	6 mm <sup>2</sup>
DIN 46235: 2 cable lugs per side, min.	6 mm <sup>2</sup>
DIN 46235: 2 cable lugs per side, max.	25 mm <sup>2</sup>

#### Environmental Product Compliance

REACH Conform	yes
REACH Reference date	2023-06-14
REACH Candidate Substance Note	No
RoHS Conform	yes

### Approvals

#### CSA approval

CSA approval	C22.2 No 158
CSA approval granted	yes
CSA Usegroup C: rated voltage	1000 V
CSA Usegroup C: rated current	130 A
CSA Usegroup D: rated voltage	1000 V
CSA Usegroup D: rated current	130 A
CSA wire cross-section AWG, min.	14
CSA wire cross-section AWG, max.	1/0
CSA torque, max.	6 Nm
CSA torque, min.	3 Nm

#### CSAus approval

CSAus approval	UL 1059
CSAus approval granted	yes
CSAus Usegroup C: rated voltage	1000 V
CSAus Usegroup C: rated current	130 A
CSAus Usegroup D: rated voltage	1000 V
CSAus Usegroup D: rated current	130 A
CSAus wire cross-section AWG, min.	14
CSAus wire cross-section AWG, max.	1/0
CSAus torque, min.	3 Nm
CSAus torque, max.	6 Nm

### Approvals

#### cUL Recognized

cUL approval	C22.2 No 158
cUL Usegroup B: rated voltage	1000 V
cUL Usegroup B: rated current	130 A
cUL Usegroup C: rated voltage	1000 V
cUL Usegroup C: rated current	130 A
cUL Usegroup D: rated voltage	1000 V
cUL Usegroup D: rated current	130 A
cUL Usegroup E: rated voltage	1000 V
cUL Usegroup E: rated current	130 A
cUL wire cross-section AWG, min.	14
cUL wire cross-section AWG, max.	1/0
cUL torque, min.	3 Nm
cUL torque, max.	6 Nm
cUL wire material	Cu
cUL Recognized	1

#### KEMA KEUR approval

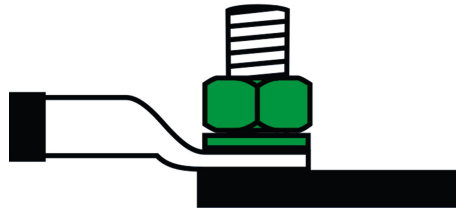
KEMA KEUR approval	EN 60947-7-1:2028
KEMA KEUR approval granted	yes
KEMA rated voltage	1000 V
KEMA rated current	125 A
KEMA rated impulse voltage	8 kV
KEMA wire cross-section, min.	2.5 mm <sup>2</sup>
KEMA wire cross-section, max.	50 mm <sup>2</sup>
KEMA torque, min.	3 Nm
KEMA torque, max.	6 Nm

### Approvals

#### UL Recognized

UL approval	UL 1059
UL Usegroup B: rated voltage	1000 V
UL Usegroup B: rated current (only for factory wiring)	130 A
UL Usegroup C: rated voltage	1000 V
UL Usegroup C: rated current (only for factory wiring)	130 A
UL Usegroup D: rated voltage	1000 V
UL Usegroup D: rated current	130 A
UL Usegroup E: rated voltage	1000 V
UL Usegroup E: rated current	130 A
UL wire cross-section AWG, min.	14
UL wire cross-section AWG, max.	1/0
UL torque, min.	26.5 Lb In.
UL torque, max.	53.1 Lb In.
UL wire material	Cu
UL factory wiring	1
UL field wiring	1
UL Recognized	1

### Media



### Accessories

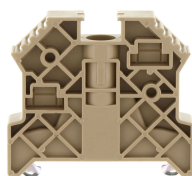
#### Protective hood



Cover profile, Length: 63.2 mm, Width: 26.7 mm, Colour: Yellow

Article number	Article name	GTIN (EAN)	Packaging unit
<u>17275.8</u>	ADH 35 YE	4044211189440	10

#### End stop



End stop, Mounting type: Mounting rail TS 35/7.5, Width: 9.5 mm, Colour: Beige

Article number	Article name	GTIN (EAN)	Packaging unit
<u>2828.0</u>	ES 35/K/ST BG	4044211055547	50

#### Cross-connection rail



Cross-connector, No. of poles: 2, Mounting type: Can be screwed on, Width: 42 mm, Colour: natural

Article number	Article name	GTIN (EAN)	Packaging unit
<u>17276.0</u>	QS 2/35/6	4044211189457	10 ST



Cross-connector, No. of poles: 3, Mounting type: Can be screwed on, Width: 69 mm, Colour: natural

Article number	Article name	GTIN (EAN)	Packaging unit
<u>17277.0</u>	QS 3/35/6	4044211189464	10 ST



### Quick marking



Terminal marker / Pocket Maxicard, Length: 5 mm, Width: 6 mm, Colour: White

Article number	Article name	GTIN (EAN)	Packaging unit
<u>4702.7</u>	PMC SB 6/50 WH	4044211089986	500 ST