

BC20-26

600 lb WLL*

LOW PROFILE BEAM CLAMP WITH SWIVEL EYE

BeamWare™



Swiveling Hang Point

CHANNEL STYLE BEAM CLAMP

Adaptive's low-profile channel style beam clamps anchor permanently to structural I-Beams and provide a safe, predictable method for suspending loads from overhead.

The channel style beam clamp is adjustable for beam flange widths ranging from between 20" and 26" (508-660 mm). The body of the clamp mounts flush underneath the beam's flange and is equipped with a load-rated swiveling shoulder eye bolt that rotates in the direction of the load to minimize side loading.

Specify this beam clamp for many types of suspensions from horizontally oriented I-Beams, including wire rope assemblies, bridles, rigging chain and other equipment.

A variety of spacers are included in the kits to accommodate beam flange thickness from .1875 to 1.0" (5mm to 25mm) and the only tools that are needed to install the clamp is a 1.0" and a 7/16" hex wrench.



Wood Beam Adapter
BC-LAM-KIT

* Steel I-Beams Only

KEY FEATURES:

- ▶ Single load-rated center hang point
- ▶ Provides safe load-rated suspension
- ▶ Secures to beam flanges ranging from 20" - 26"

OPTIONAL ACCESSORIES:

- ▶ See Rigging Components Datasheet
- ▶ See Gimballed Beam Clamp
- ▶ BC-LAM-KIT for wooden beams

* Not for human suspension

SPECIFICATIONS:

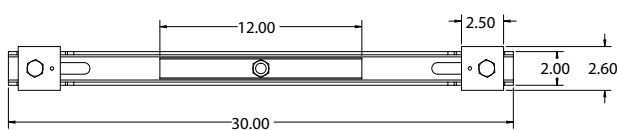
- Material:** Structural C-Channel
- Finish:** Powder Coat
- Color:** Black
- Design Factor:** 5:1
- WLL:** 600 lb / 272 kg Steel I-Beams Vertical
- WLL:** 358 lb / 163 kg at 45°
- WLL:** 300 lb / 136 kg Wood Beams
- Weight:** 12.25 lb / 5.6 kg
- * DO NOT EXCEED 45° OFF CENTER**

PACKAGE CONTENTS:

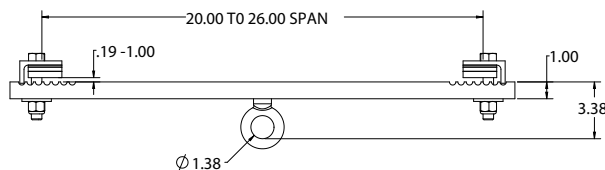
- 1 pc** 20"-26" Beam Clamp Channel
- 2 pcs** Locking Angle Plate
- 2 pcs** Flat Washer, 5/8"
- 2 pcs** Nyloc Nut, 5/8-11



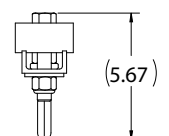
Top View



Front View



Side View



ALWAYS INSTALL SAFETY CABLES

WARNING: Mounting and/or suspension of equipment requires experienced professionals. Improperly installed equipment can result in property damage, personal injury and/or liability to the installing contractor.

Adaptive Technologies Group
1635 E. Burnett Street | Signal Hill, CA 90755 USA
Ph: 562.424.1100 | Fax: 562.424.3520
www.adaptivetechologiesgroup.com

