



WWW.BARRYIND.COM

TV0202*ZZ-XXXXWN-AA



Alumina and BeO CHIP TERMINATION

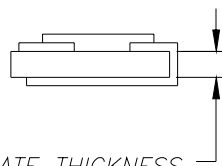
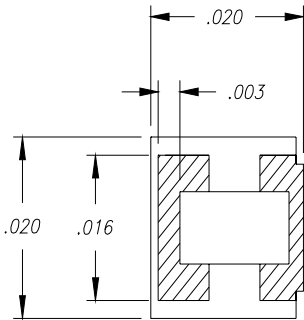
Features:

- ◆ Compact Design
- ◆ DC - 6 GHz Performance
- ◆ Several Mounting Options Available

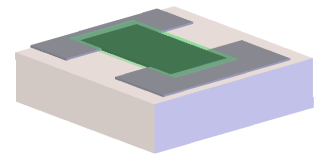
General Description:

The TV0202 series is a chip termination with a frequency range up to 6 GHz. It offers a small package design and has a peak voltage of 20V. It is available in BeO and Alumina with several mounting options.

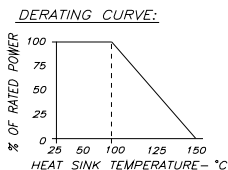
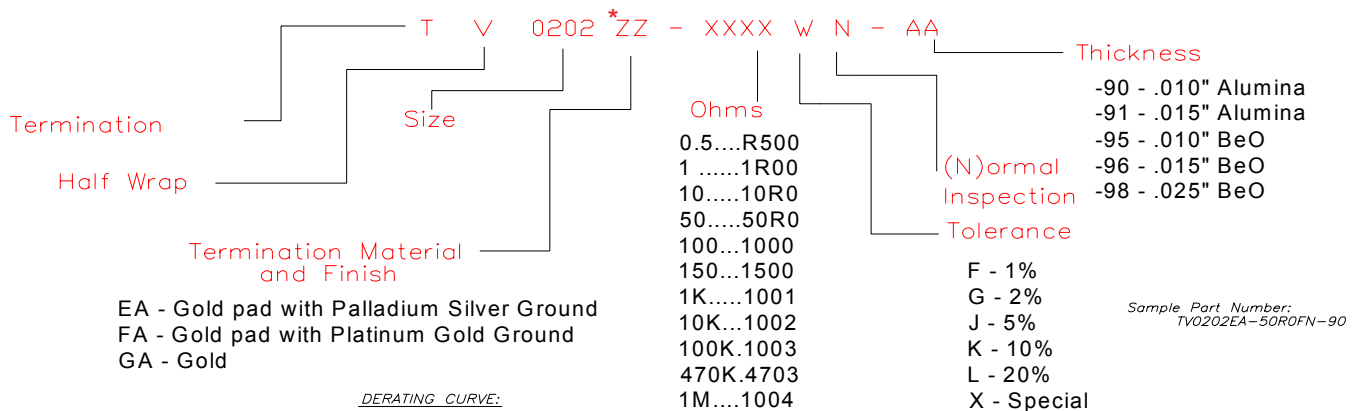
See below for ordering options and RF specs.



SUBSTRATE THICKNESS SEE TABLE -AA



See chart below for ordering options



DASH NO.	AA=SUBSTRATE THICKNESS	Power/Freq./VSWR/Cap pF
-90	.010 ALUMINA	0.05/DC-6/1.22:1/<0.1
-91	.015 ALUMINA	0.05/DC-6/1.22:1/<0.1
-95	.010 BeO	0.15/DC-6/1.22:1/<0.1
-96	.015 BeO	0.13/DC-6/1.22:1/<0.1
-98	.025 BeO	0.05/DC-6/1.22:1/<0.1

Barry Industries reserves the right to change part number and or process without notification.

Barry Industries, Inc., 60 Walton St., Attleboro, MA 02703 T: 508-226-3350 F: 508-226-3317 E-mail: ABSales@Vishay.com
 Barry Industries maintains an ISO 9001 Certified Quality Management System

Origination Date	Revision Date	Rev.
10/29/03	07/01/08	B