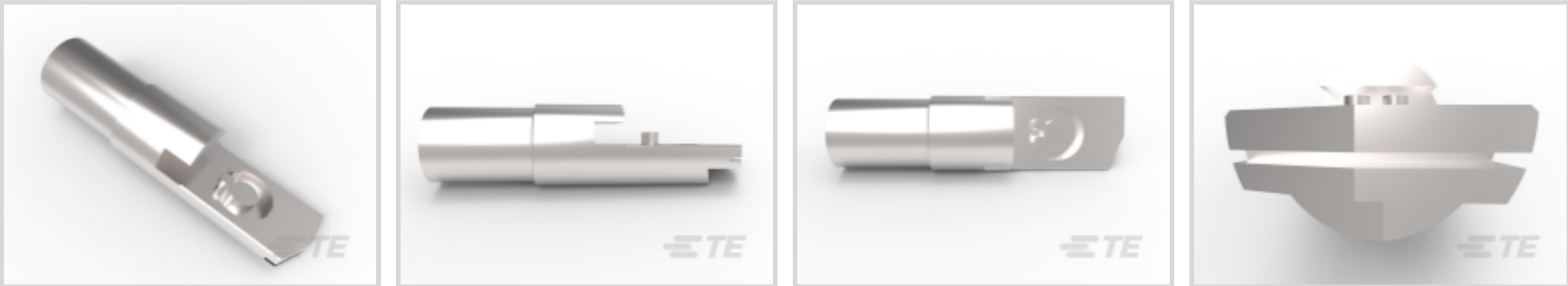




Terminals & Splices > Knife Disconnects > AMPOWER Knife Disconnect



Body Plating Material: **Silver**
Wire Insulation Support: **Without**
Wire Size: **400 kcmil**

[All AMPOWER Knife Disconnect \(12\)](#)

Features

Product Type Features

Disconnect Type	Dual Pin Disconnect
-----------------	---------------------

Body Features

Body Plating Material	Silver
-----------------------	--------

Mechanical Attachment

Wire Insulation Support	Without
-------------------------	---------

Dimensions

Wire Size	400 kcmil
-----------	-----------

Usage Conditions

Insulation Option	Uninsulated
-------------------	-------------

Operation/Application

Power Conductor Stranding	1100/24
---------------------------	---------

Packaging Features

Packaging Quantity	5
Packaging Method	Box

Product Compliance

[For compliance documentation, visit the product page on TE.com>](#)



EU RoHS Directive 2011/65/EU	Compliant with Exemptions
EU ELV Directive 2000/53/EC	Compliant with Exemptions
China RoHS 2 Directive MIIT Order No 32, 2016	Restricted Materials Above Threshold
EU REACH Regulation (EC) No. 1907/2006	Current ECHA Candidate List: JAN 2024 (240) Candidate List Declared Against: JAN 2024 (240) SVHC > Threshold: Pb (3.7% in Component Part) Article Safe Usage Statements: Do not eat, drink or smoke when using this product. Wash thoroughly after handling. Recycle if possible and dispose of the article by following all applicable governmental regulations relevant to your geographic location.
Halogen Content	Low Halogen - Br, Cl, F, I < 900 ppm per homogenous material. Also BFR/CFR/PVC Free
Solder Process Capability	Not applicable for solder process capability

Product Compliance Disclaimer

This information is provided based on reasonable inquiry of our suppliers and represents our current actual knowledge based on the information they provided. This information is subject to change. The part numbers that TE has identified as EU RoHS compliant have a maximum concentration of 0.1% by weight in homogenous materials for lead, hexavalent chromium, mercury, PBB, PBDE, DBP, BBP, DEHP, DIBP, and 0.01% for cadmium, or qualify for an exemption to these limits as defined in the Annexes of Directive 2011/65/EU (RoHS2). Finished electrical and electronic equipment products will be CE marked as required by Directive 2011/65/EU. Components may not be CE marked. Additionally, the part numbers that TE has identified as EU ELV compliant have a maximum concentration of 0.1% by weight in homogenous materials for lead, hexavalent chromium, and mercury, and 0.01% for cadmium, or qualify for an exemption to these limits as defined in the Annexes of Directive 2000/53/EC (ELV). Regarding the REACH Regulation, the information TE provides on SVHC in articles for this part number is based on the latest European Chemicals Agency (ECHA) 'Guidance on requirements for substances in articles' posted at this URL: <https://echa.europa.eu/guidance-documents/guidance-on-reach>

Compatible Parts



TE Part # 53853-2
PIN, KNIFE DISC, AMPPOWER, .835 LGTH



TE Part # 68332-1
HYP10 AMPMOWER 400MCM DIE SET



TE Part # 53434-2
TERMINAL, QUICK DISCONNECT

Customers Also Bought



TE Part # 34805
TERM, PIDG, RT, 16-14 HD, #10



TE Part # 1027-003-1200
CLIP, SS, 11MM HOLE, ST



TE Part # W3S
WEDGE LOCK, 3P, PLG, ORG, STD, DT



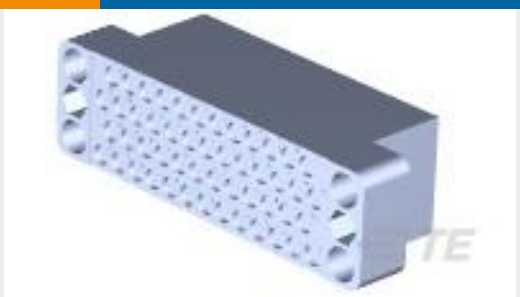
TE Part # DT04-3P-E004
REC, 3P, BLK, N



TE Part # 2040594-6
SEAL CAP HSG 12P, AMPSEAL16 SE



TE Part # 0460-202-1631
PIN, SOLID, SIZE 16, 16-20AWG, AU



TE Part # 200277-4
BLOCK,50 POSN,M SERIES



TE Part # 201501-1
SPIROL PIN



TE Part # 374Z-04025
Speed sen DSH 1840.01 SHV (2m) 008

Documents

Product Drawings

AMPOWER QUICK DISC 400MCM

English

CAD Files

3D PDF

3D

Customer View Model

ENG_CVM_CVM_53434-1_R.2d_dxf.zip

English

Customer View Model

ENG_CVM_CVM_53434-1_R.3d_igs.zip

English

Customer View Model

ENG_CVM_CVM_53434-1_R.3d_stp.zip

English

By downloading the CAD file I accept and agree to the Terms and Conditions of use.

Datasheets & Catalog Pages



AMPOWER Quick Disconnect Flyer

English

Product Specifications

AMPOWER Quick-Disconnect and Bolt-Disconnect Power Connectors for Traction Motor Leads

English

Product Specification

English

Instruction Sheets

Instruction Sheet (U.S.)

English