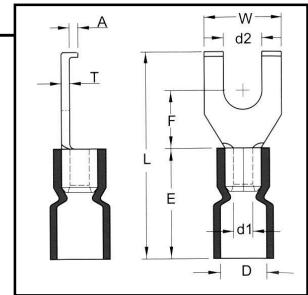


## Vinyl Insulated Flanged Spade Terminals

### 2216 AWG Vinyl Insulated Flanged Spade

**Material:** Tin Plated Copper with Butted Seam  
**Insulation Material:** Red PVC Vinyl  
**Maximum Electrical Current:** 18 Amps  
**Maximum Electrical Rating:** 75°C, 600V  
**Material Thickness (T):** .030

**Barrel ID (d1):** .067  
**Barrel OD (D):** .157  
**Barrel Length (E):** .441 **J Type:** .394



HOFFMAN PART NO.	STUD SIZE	DIMENSIONS (INCHES)					UL	TAPE MOUNTED REEL QTY	DIE FOR TAPE MOUNTED	HAND TOOL
		STUD DIAMETER	TONGUE WIDTH	STUD CLEARANCE	LENGTH	FLANGE HEIGHT				
		d2	W	F	L	A				
FVL2216S3BR2/J	6	0.146	0.295	0.201	0.752	0.059	Y	1000	3V2216	YNT2216
FVL2216S3BR	6	0.146	0.295	0.201	0.795	0.059	Y	1000	3V2216	YNM2210
FVL2216S4BR2/J	8	0.169	0.295	0.201	0.752	0.059	Y	1000	3V2216	YNT2216
FVL2216S4BR2	8	0.169	0.295	0.201	0.795	0.059	Y	1000	3V2216	YNM2210
FVL2216S5BR2/J	10	0.209	0.295	0.201	0.752	0.059	Y	1000	3V2216	YNT2216
FVL2216S5BR2	10	0.209	0.295	0.201	0.795	0.059	Y	1000	3V2216	YNM2210

### 1614 AWG Vinyl Insulated Flanged Spade

**Material:** Tin Plated Copper with Butted Seam  
**Insulation Material:** Blue PVC Vinyl  
**Maximum Electrical Current:** 50 Amps  
**Maximum Electrical Rating:** 75°C, 600V  
**Material Thickness (T):** .031

**Barrel ID (d1):** .091  
**Barrel OD (D):** .177 **J Type:** .177  
**Barrel Length (E):** .453 **J Type:** .394

HOFFMAN PART NO.	STUD SIZE	DIMENSIONS (INCHES)					UL	TAPE MOUNTED REEL QTY	DIE FOR TAPE MOUNTED	HAND TOOL
		STUD DIAMETER	TONGUE WIDTH	STUD CLEARANCE	LENGTH	FLANGE HEIGHT				
		d2	W	F	L	A				
FVL1614S3BR2/J	6	0.146	0.335	0.283	0.819	0.059	Y	1000	3V1614	YNT1614
FVL1614S3BR2	6	0.146	0.335	0.283	0.965	0.059	Y	1000	3V1614	YNM2210
FVL1614S4BR2/J	8	0.169	0.335	0.283	0.819	0.059	Y	1000	3V1614	YNT1614
FVL1614S4BR2	8	0.169	0.335	0.283	0.965	0.059	Y	1000	3V1614	YNM2210
FVL1614S5BR2/J	10	0.209	0.335	0.283	0.819	0.059	Y	1000	3V1614	YNT1614
FVL1614S5BR2	10	0.209	0.335	0.283	0.965	0.059	Y	1000	3V1614	YNM2210

