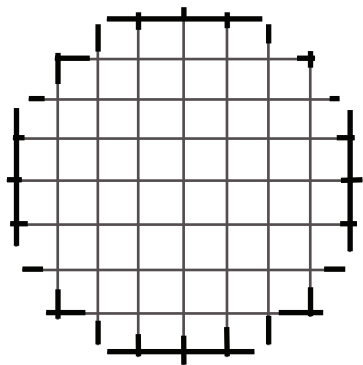




*Screen edges are sharp.  
Handle with care!*



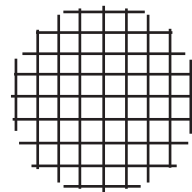
# 999-700

Debris Screen for  
the FA-430 Nozzle

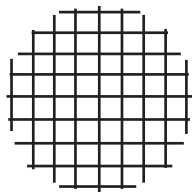


**AMERICAN HAKKO PRODUCTS, INC.**  
28920 AVENUE WILLIAMS VALENCIA, CA 91355, U.S.A.  
TEL.: (661) 294-0090 FAX: (661) 294-0096  
Toll Free (800)88-HAKKO  
<http://www.hakkousa.com>

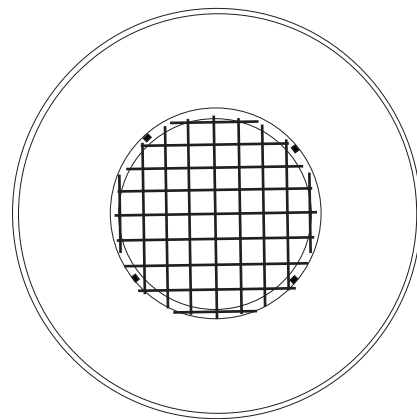
***Thank you for  
purchasing  
the 999-700!***



**1) Fit screen onto  
nozzle interior where  
duct will connect.**

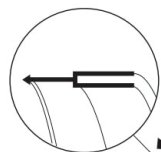


Align screen so  
that edges lay  
between tabs.

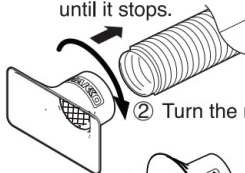


**2) Once screen is in  
place, attach duct  
back onto nozzle.**

Be sure the duct is  
facing in the  
proper direction  
during assembly.



① Insert the nozzle  
until it stops.



② Turn the nozzle clockwise.

