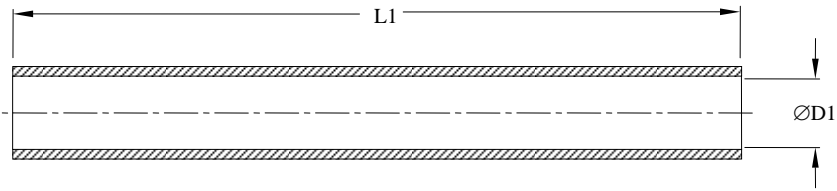
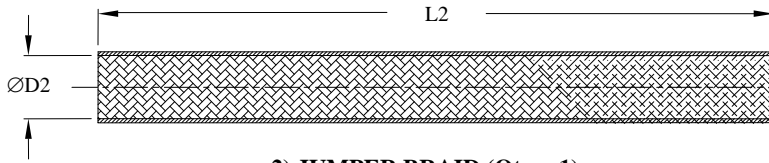


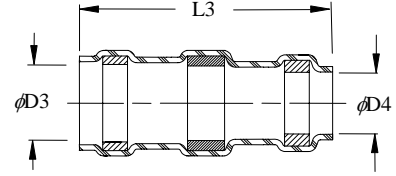
SPECIFICATION CONTROL DRAWING



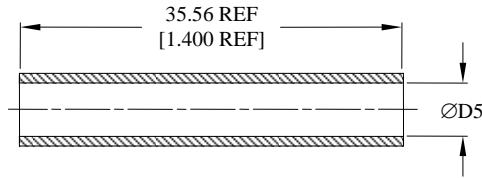
1) OUTER INSULATION SLEEVE (Qty = 1)



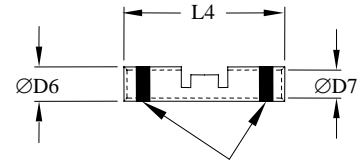
2) JUMPER BRAID (Qty = 1)



3) SOLDERSLEEVE, Qty.: 2



4) INNER SEALING SLEEVE, Qty.: See Table



COLOR CODE: See Table

5) CRIMP SPLICE, Qty.: See Table

OUTER INSULATION SLEEVE, JUMPER BRAID, AND SOLDERSLEEVE DIMENSIONS

Product Name	L1 Nom	ØD1		L2 Min (3)	ØD2 Ref	L3 Max	ØD3 Min	ØD4 Min
		(1)	(2)					
D-150-0342	139.70 [5.500]	4.82 [0.190]	1.78 [0.070]	101.60 [4.000]	4.34 [0.171]	18.20 [0.715]	4.95 [0.195]	4.45 [0.175]
D-150-0343	168.00 [6.615]	6.10 [0.240]	3.81 [0.150]	139.70 [5.500]	4.34 [0.171]	18.20 [0.715]	4.95 [0.195]	4.45 [0.175]
D-150-0344	168.00 [6.615]	8.90 [0.350]	5.34 [0.210]	139.70 [5.500]	8.74 [0.344]	20.80 [0.819]	7.62 [0.300]	7.11 [0.280]
D-150-0345	139.70 [5.500]	6.10 [0.240]	3.81 [0.150]	101.60 [4.000]	6.35 [0.250]	20.80 [0.819]	6.48 [0.255]	5.95 [0.235]

(1) Minimum ID as supplied; (2) Maximum ID after shrinking; (3) Minimum Length on a ØD2 OD mandrel

INNER SEALING SLEEVE AND CRIMP SPLICE DIMENSIONS

Product Name	Qty:	AWG Range	Color Code	ØD5 Min	L4±0.25 [L4±0.001]	ØD6±0.08 [ØD5±0.003]	ØD7±0.05 [ØD6±0.002]
D-150-0342	1	26 - 20	Red	3.30 [0.130]	12.70 [0.500]	1.97 [0.076]	1.20 [0.047]
D-150-0343	2	26 - 20	Red	3.30 [0.130]	12.70 [0.500]	1.97 [0.076]	1.20 [0.047]
D-150-0344	3	16 - 12	Yellow	4.06 [0.160]	14.60 [0.575]	3.81 [0.150]	2.54 [0.100]
D-150-0345	1	12 - 10	N/A	6.10 [0.240]	17.86 Max [0.703 Max]	5.74 Max [0.226 Max]	3.28 Min [0.129 Min]

Tyco Electronics		Tyco Electronics 300 Constitution Dr Menlo Park, CA 94025, U.S.A.	TITLE: SHIELDED CABLE SPLICE, FLEXIBLE, NI-PLATED BRAID AND CRIMP, 200 DEG C		
Unless otherwise specified dimensions are in millimeters. [Inches dimensions are shown in brackets]		<i>Raychem</i>	DOCUMENT NO.: D-150-0342/-0345		
TOLERANCES: 0.00 N/A 0.0 N/A 0 N/A	ANGLES: N/A ROUGHNESS IN MICRON	Tyco Electronics reserves the right to amend this drawing at any time. Users should evaluate the suitability of the product for their application.		REV: B	DATE: 23-Apr-07
DRAWN BY: P.TALLY	CAGE CODE: 06090	REPLACES: D070054	ECO NUMBER: 07-009364	SCALE: NTS	SIZE: A
				SHEET: 1 of 2	

SPECIFICATION CONTROL DRAWING

MATERIALS

1. OUTER INSULATION SLEEVE: Heat-shrinkable, transparent clear, modified polytetrafluorethylene with meltable liner
2. JUMPER BRAID: Nickel-plated copper alloy.
3. SOLDER SLEEVE: Qty.: 2
INSULATION SLEEVE: Heat-shrinkable, transparent blue, radiation cross-linked modified polyvinylidene fluoride..
SOLDER PREFORM WITH FLUX:
SOLDER: TYPE Sn96 per ANSI / J-STD-006.
FLUX: TYPE ROM1 per ANSI / J-STD-004.
MELTABLE RINGS: Environment resistant modified thermoplastic fluoroelastomer. Color: light blue.
4. INNER SEALING SLEEVE: Heat-shrinkable, transparent clear, modified polytetrafluorethylene with meltable liner
5. CRIMP SPLICE: Ni-plated copper. Color Code & Qty.: see table.
Base Metal: Copper Alloy 101 or 102 per ASTM B-75.
Plating: Nickel per SAE AMS-QQ-N-290.

APPLICATION

1. These Cable Splice kits may be used to obtain an immersion resistant cable splice. Both conductors and shield shall be nickel-plated and cables must be rated for not less than 150°C.
2. Temperature rating: -65°C to + 200°C.
3. Install using a Raychem-approved hot-air heaters or equivalent. Use Tyco Electronics Raychem AD-1377 crimp tool (or equivalent tool) to install crimp barrel for conductors gauges AWG 26-12, and Tyco Electronics AMP 46447 for wire gauges AWG 12-10.

Unless otherwise specified dimensions are in millimeters. [Inches dimensions are shown in brackets]

DOCUMENT NO: D-150-0342/-0345	REV: B	ECO NUMBER: 07-009364	DATE: 23-Apr-07	SHEET: 2 of 2
---	-----------	--------------------------	--------------------	------------------