

Features

- Low zener impedance
- High reliability
- Lead-free finish
- CASE: DO-15 molded plastic package
- Mounting position: Any
- Polarity: Cathode by color band
- Terminal: Solder plated



DO-15

Absolute Maximum Ratings (T_A=25°C unless otherwise specified)

Parameter	Symbol	Value	Unit
Power Dissipation	P _D	5	W
Thermal Resistance Junction to Ambient Air	R _{θJA}	100	°C/W
Thermal Resistance Junction to Leads	R _{θJL}	25	°C/W
Forward Voltage @ I _F =200mA	V _F	1.2	V
Storage Temperature Range	T _{STG}	-55 to +150	°C
Operating Junction Temperature Range	T _J	-55 to +150	°C

Electrical Characteristics (T_A = 25 °C unless otherwise noted)

Part Number	Zener Voltage			Test Current	Dynamic Impedance	Knee Current	Knee Impedance	Reverse Current	Reverse Voltage	Max.DC Current
	V _Z /V			I _{ZT}	Z _{ZT}	I _{ZK}	Z _{ZK}	I _{R(Max.)}	V _R	I _{ZM}
	V _{Z(MIN)}	V _{Z(NOR)}	V _{Z(MAX)}	mA	Ω	mA	Ω	μA _{dc}	V	mA
1N5333B	3.135	3.300	3.465	380	3	1	400	300	1	1440
1N5334B	3.420	3.600	3.780	350	2.5	1	500	150	1	1320
1N5335B	3.705	3.900	4.095	320	2	1	500	50	1	1220
1N5336B	4.085	4.300	4.515	290	2	1	500	10	1	1100
1N5337B	4.465	4.700	4.935	260	2	1	450	5	1	1010
1N5338B	4.845	5.100	5.355	240	1.5	1	400	1	1	930
1N5339B	5.320	5.600	5.880	220	1	1	400	1	2	856
1N5340B	5.700	6.000	6.300	200	1	1	300	1	3	790
1N5341B	5.890	6.200	6.510	200	1	1	200	1	4	765
1N5342B	6.460	6.800	7.140	175	1	1	200	150	4.9	700
1N5343B	7.125	7.500	7.875	175	1.5	1	200	150	5.4	630
1N5344B	7.790	8.200	8.610	150	1.5	1	200	150	5.9	580
1N5345B	8.265	9.700	9.135	150	2	1	200	150	6.3	545
1N5346B	8.645	9.100	9.555	150	2	1	150	150	6.6	520
1N5347B	9.500	10.000	10.500	125	2	1	125	150	7.2	475
1N5348B	10.450	11.000	11.550	125	2.5	1	125	150	8	430
1N5349B	11.400	12.000	12.600	100	2.5	1	125	2	8.6	395
1N5350B	12.350	13.000	13.650	100	2.5	1	100	1	9.4	365

Electrical Characteristics (T_A = 25 °C unless otherwise noted)

Part Number	Zener Voltage			Test Current	Dynamic Impedance	Knee Current	Knee Impedance	Reverse Current	Reverse Voltage	Max.DC Current
	Vz /V			IzT	ZzT	Izk	Zzk	IR(Max.)	VR	IzM
	Vz(MIN)	Vz(NOR)	Vz(MAX)	mA	Ω	mA	Ω	μA _{dc}	V	mA
1N5351B	13.330	14.000	14.700	100	2.5	1	75	1	10.1	340
1N5352B	14.280	15.000	15.750	75	2.5	1	75	1	10.8	315
1N5353B	15.230	16.000	16.800	75	2.5	1	75	1	11.5	295
1N5354B	16.190	17.000	17.850	70	2.5	1	75	0.5	12.2	280
1N5355B	17.140	18.000	18.900	65	2.5	1	75	0.5	13	265
1N5356B	18.090	19.000	19.950	65	8	1	75	0.5	13.7	250
1N5357B	19.040	20.000	21.000	65	3	1	75	0.5	14.4	237
1N5358B	20.950	22.000	23.100	50	3.5	1	75	0.5	15.8	216
1N5359B	22.850	24.000	25.200	50	3.5	1	100	0.5	17.3	198
1N5360B	22.800	25.000	26.250	50	4	1	110	0.5	18	190
1N5361B	25.710	27.000	28.350	50	5	1	120	0.5	19.4	176
1N5362B	26.660	28.000	29.400	50	6	1	130	0.5	20.1	170
1N5363B	28.570	30.000	31.500	40	8	1	140	0.5	21.6	158
1N5364B	31.420	33.000	34.650	40	10	1	150	0.5	23.8	144
1N5365B	34.280	36.000	37.800	30	11	1	160	0.5	25.9	132
1N5366B	37.140	39.000	40.950	30	14	1	170	0.5	28.1	122
1N5367B	40.950	43.000	45.150	30	20	1	190	0.5	31	110
1N5368B	44.760	47.000	49.350	25	25	1	210	0.5	33.8	100
1N5369B	48.570	51.000	53.550	25	27	1	230	0.5	36.7	93
1N5370B	53.330	56.000	58.800	20	35	1	280	0.5	40.3	86
1N5371B	57.140	60.000	63.000	20	40	1	350	0.5	43	79
1N5372B	59.050	62.000	65.100	20	42	1	400	0.5	44.6	76
1N5373B	64.760	68.000	71.400	20	44	1	500	0.5	49	70
1N5374B	71.430	75.000	78.750	20	45	1	620	0.5	54	63
1N5375B	78.100	82.000	86.100	15	65	1	720	0.5	59	58
1N5376B	82.650	87.000	91.350	15	75	1	760	0.5	63	54.5
1N5377B	86.450	91.000	95.550	15	75	1	760	0.5	65.5	52.5
1N5378B	95.000	100.000	105.000	12	90	1	800	0.5	72	47.5
1N5379B	104.500	110.000	115.500	12	125	1	1000	0.5	79.2	43
1N5380B	114.000	120.000	126.000	10	170	1	1150	0.5	86.4	39.5
1N5381B	123.500	130.000	136.500	10	190	1	1250	0.5	93.2	36.6
1N5382B	133.000	140.000	147.000	8	230	1	1500	0.5	101	34
1N5383B	142.500	150.000	157.500	8	330	1	1500	0.5	108	31.6
1N5384B	152.000	160.000	168.000	8	350	1	1650	0.5	115	29.4
1N5385B	161.500	170.000	178.500	8	380	1	1750	0.5	122	28
1N5386B	171.000	180.000	189.000	5	430	1	1750	0.5	130	26.4
1N5387B	180.500	190.000	199.500	5	450	1	1850	0.5	137	25
1N5388B	190.000	200.000	210.000	5	480	1	1850	0.5	144	23.6

Ratings and Characteristics Curves

($T_A = 25^\circ\text{C}$ unless otherwise noted)

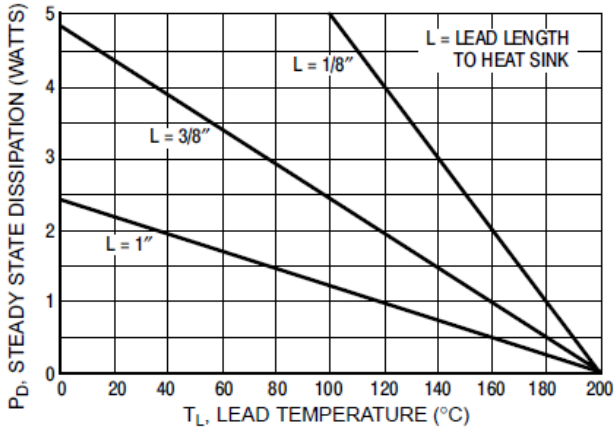
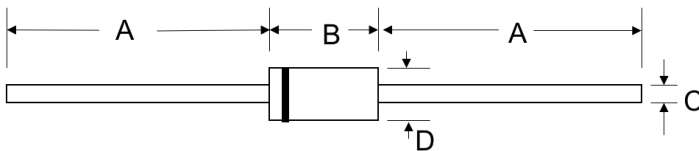


Figure 1. Power Temperature Derating Curve

Package Outline Dimensions

DO-15



Dim	Millimeters		Inches	
	Min	Max	Min	Max
A	25.4	---	1.000	---
B	5.80	7.60	0.230	0.300
C	0.70	0.90	0.028	0.034
D	2.60	3.60	0.104	0.140