

**SAW Filter 1234.4 MHz**  
**Part No: MP11472**

**Model: TA1925A**  
**Rev No: 1**

Electrostatic Sensitive Device (ESD)

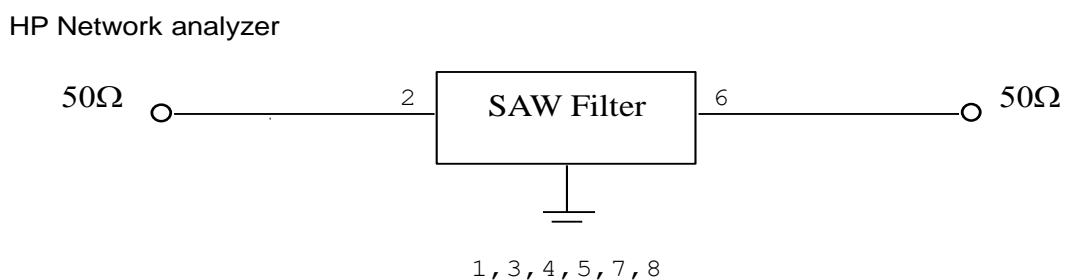
**A. MAXIMUM RATING:**

1. Input Power Level: 10 dBm
2. DC Voltage: +/- 3 V
3. Operating temperature range: -40 °C to +85 °C
4. Storage temperature range: -40 °C to +85 °C
5. Moisture Sensitivity Level: Level 1 (MSL 1)

**B. ELECTRICAL CHARACTERISTICS:**

Item	Unit	Min.	Typ.	Max.
Center frequency Fc	MHz	-	1234.4	-
Insertion loss (1211.9~1256.9 MHz) IL	dB	-	3.3	4.8
Amplitude Ripple (1211.9~1256.9 MHz)	dB	-	1.1	2.8
Group delay ripple (1211.9~1256.9 MHz)	ns	-	27	120
Attenuation (Reference level from 0 dB)				
10 ~ 1088 MHz	dB	40	50	-
1088 ~ 1178 MHz	dB	25	40	-
1297 ~ 1387 MHz	dB	25	40	-
1387 ~ 2000 MHz	dB	35	41	-
2000 ~ 3000 MHz	dB	17	22	-
Temperature coefficient of frequency	ppm/k	-	-36	-

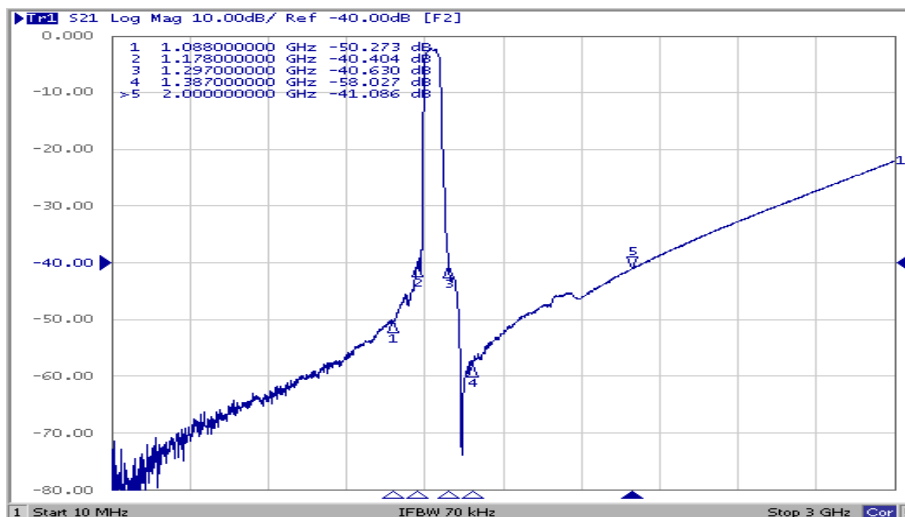
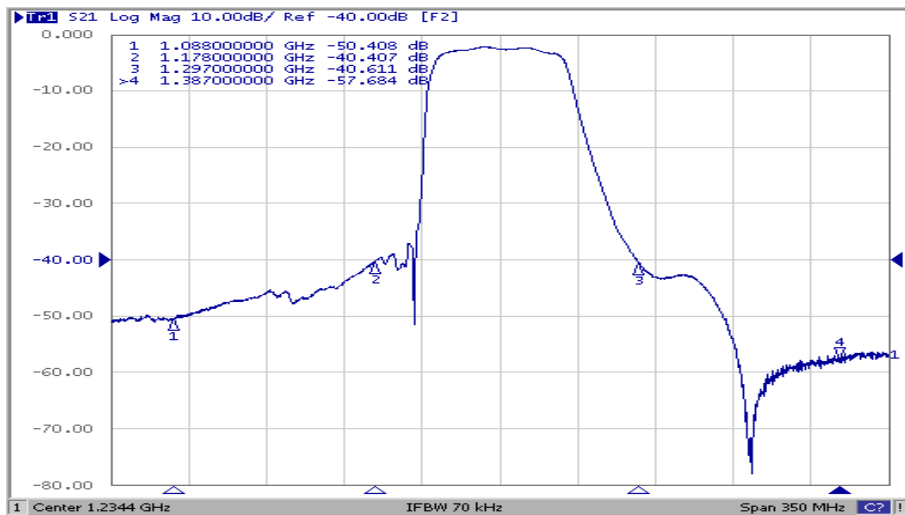
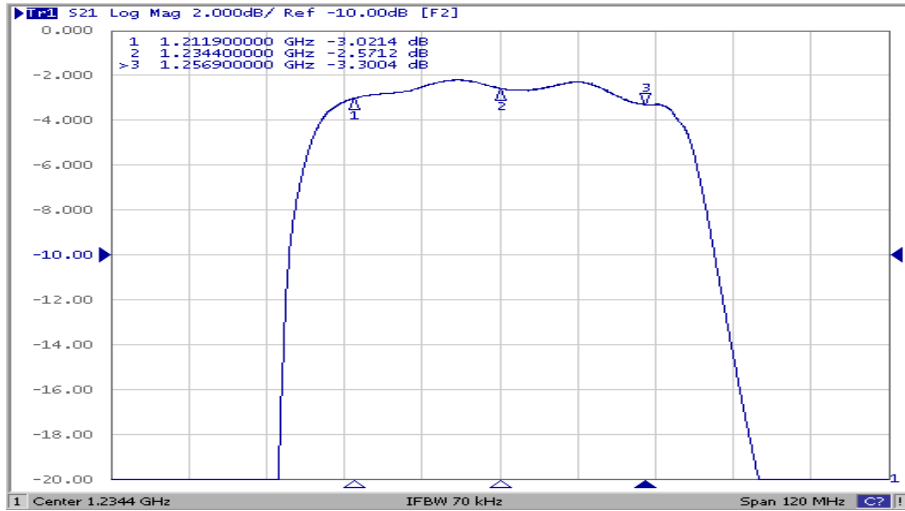
**C. MEASUREMENT CIRCUIT:**



**SAW Filter 1234.4 MHz**  
**Part No: MP11472**

**Model: TA1925A**  
**Rev No: 1**

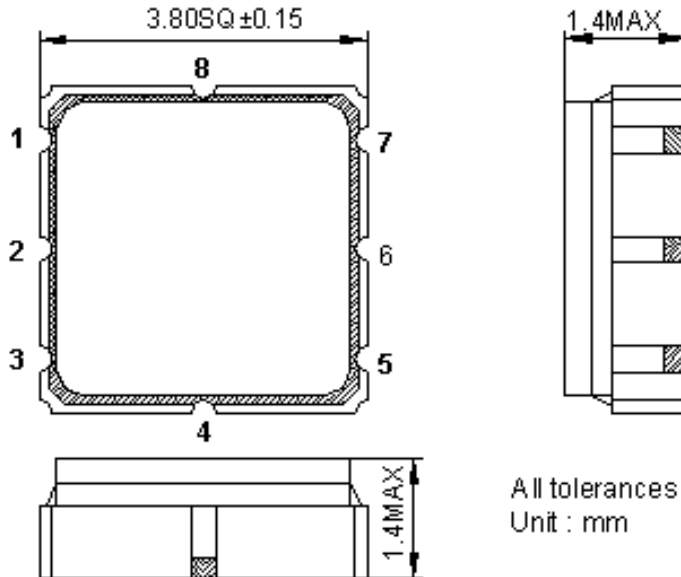
**D. FREQUENCY CHARACTERISTICS:**



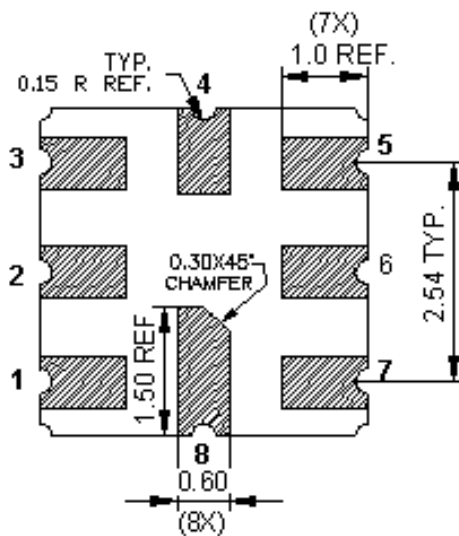
**SAW Filter 1234.4 MHz**  
**Part No: MP11472**

**Model: TA1925A**  
**Rev No: 1**

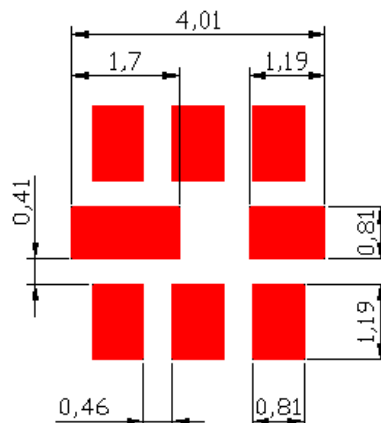
**E. OUTLINE DRAWING:**



All tolerances are +/-0.05 mm unless otherwise specified  
 Unit : mm



**F. PCB FOOTPRINT:**

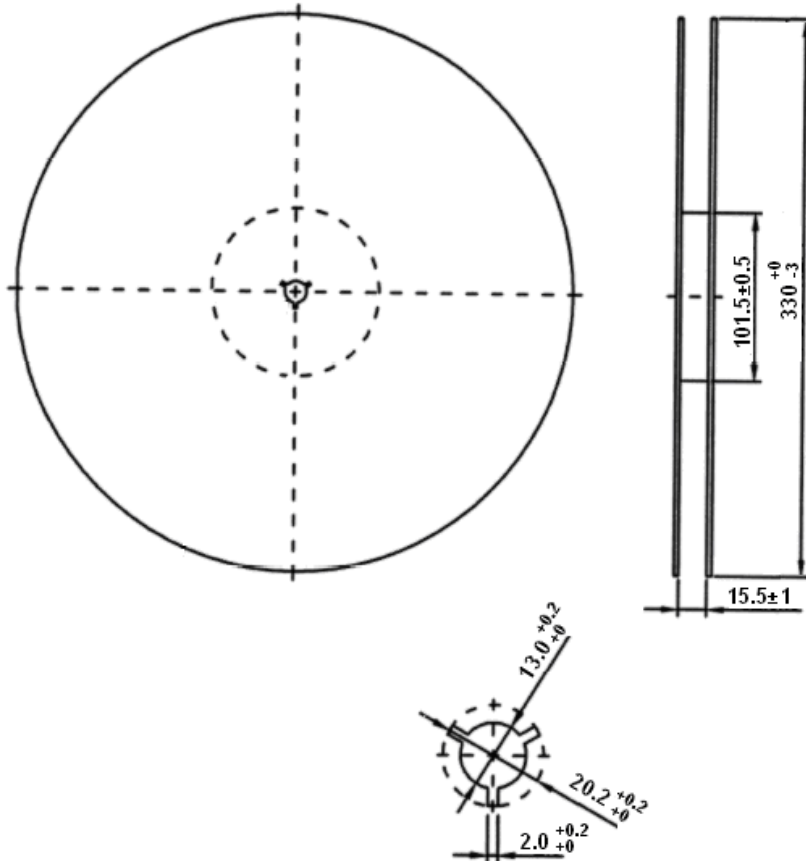


**SAW Filter 1234.4 MHz**  
**Part No: MP11472**

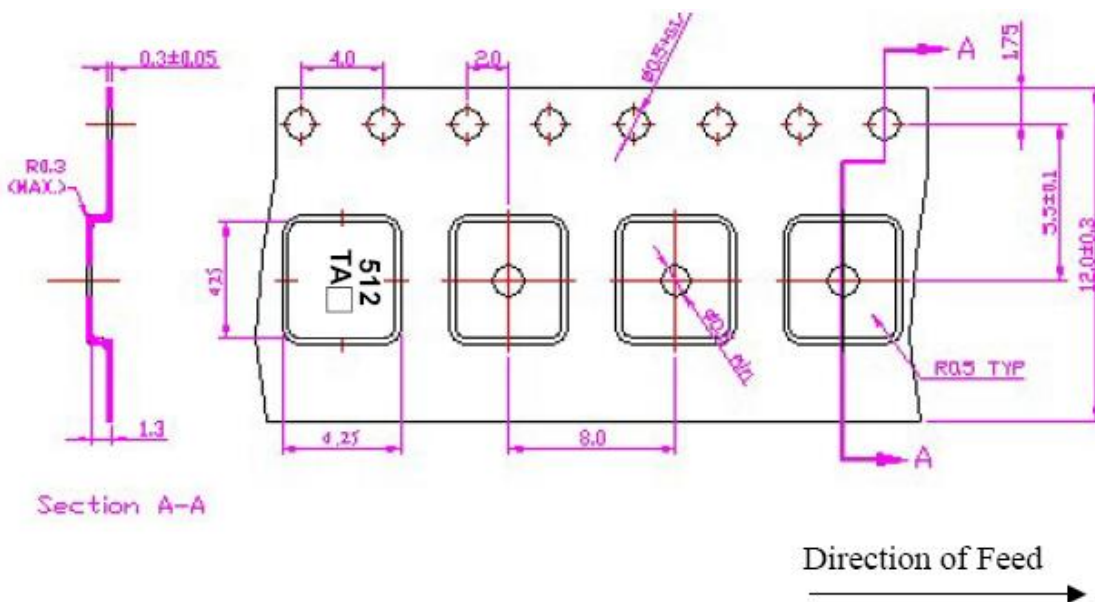
**Model: TA1925A**  
**Rev No: 1**

**G. PACKING:**

1. Reel dimension



2. Tape dimension



**SAW Filter 1234.4 MHz**  
**Part No: MP11472**

**Model: TA1925A**  
**Rev No: 1**

**H. RECOMMENDED REFLOW PROFILE:**

1. Preheating shall be fixed at 150~180°C for 60~90 seconds.
2. Ascending time to preheating temperature 150°C shall be 30 seconds min.
3. Heating shall be fixed at 220°C for 50~80 seconds and at 260°C+0/-5°C peak (20~40sec).
4. Time: 2 times.

