



SPDT, IP64 Rated Electromechanical Relay Failsafe Switch, DC to 26.5 GHz, 90W, 12VDC, SMA

Electromechanical Relay Switches Technical Data Sheet

PE71S6526

Features

- Single Pole Double Throw (SP2T) Ruggedized Electromechanical Relay Switch
- IP64 Level 1 Rated
- DC to 18 GHz Frequency Range
- Failsafe Actuator
- 2M Lifecycle Rating
- Insertion Loss 0.3 dB typ
- Isolation > 70 dB typ
- VSWR as low as 1.2:1 max
- 9 Pin D-SUB Connector for DC Control
- +12 Volt DC Bias
- SMA Female Connectors
- -54°C to +85°C Operating Temperature
- Up to 90 Watt Average Power Handling
- 50 Ohm Design
- Hot Switching Capability - Consult Factory
- S-Parameter Data available upon request
- Rugged Design meets Mil-STD-202 Test Conditions

Applications

- Aerospace & Defense
- Test & Measurement
- Microwave Radio Systems
- Military & Commercial Communication Systems
- Research & Development
- SATCOM
- Wireless Communications
- Enterprise
- IoT

Description

The PE71S6526 is a Ruggedized Single Pole Double Throw (SP2T) electromechanical relay switch that operates across a frequency range from DC to 26.5 GHz and can handle up to 90 Watts of average power in a break before make condition. The 50 Ohm design is IP64 compliant with a Level 1 moisture seal and specifically designed to operate reliably in harsh usage environments and conditions, such as over extreme temperatures and wet or dusty environments. Intrusion protection offers full protection against dust and other particulates. Moisture protection enables resistance to splashes in all directions. The switch has a Failsafe actuator and is rated for 2 million lifecycles. Impressive typical performance includes 0.3 dB insertion loss and isolation greater than 70 dB. The switch requires + 12 Vdc bias voltage and operates over a wide temperature range of -54°C to +85°C. The rugged and compact package assembly supports female SMA connectors and 9 Pin D-Sub connector for DC control. And for highly reliable operation, the model is guaranteed to meet MIL-STD-202 environmental test conditions for shock and random vibration.

Electrical Specifications (TA = 25°C, DC Voltage = 12 Vdc)

Switch Type SPDT
Actuator Type Failsafe

Description	Minimum	Typical	Maximum	Units
Frequency Range	DC		26.5	GHz
Impedance		50		Ohms
Operating Voltage	11	12	13	Volts
Actuating Set Current			420	mA
VSWR		1.2:1	1.7:1	
Insertion Loss		0.3	0.6	dB
Isolation	50	80		dB

Click the following link (or enter part number in "SEARCH" on website) to obtain additional part information including price, inventory and certifications: [SPDT, IP64 Rated Electromechanical Relay Failsafe Switch, DC to 26.5 GHz, 90W, 12VDC, SMA PE71S6526](#)



SPDT, IP64 Rated Electromechanical Relay Failsafe Switch, DC to 26.5 GHz, 90W, 12VDC, SMA

Electromechanical Relay Switches Technical Data

PE71S6526

Switching Time <20 ms Typ

Performance by Frequency

Description	F1	F2	F3	F4	F5	Units
Frequency Range	DC to 6	6 to 12	12 to 18	18 to 26.5		GHz
VSWR, Max	1.2:1	1.3:1	1.4:1	1.7:1		
Insertion Loss, Max	0.2	0.4	0.5	0.6		dB
Isolation, Min	70	60	60	50		dB

Mechanical Specifications

Size

Length	2.05 in [52.07 mm]
Width/Diameter	1.5 in [38.1 mm]
Height	0.52 in [13.21 mm]
Weight	0.072 lbs [32.66 g]

Connectors

RF Connector Type	SMA Female
Control Connector	D-Subminiature

Environmental Specifications

Temperature

Operating Range	-54 to +85 deg C
Storage Range	-55 to +100 deg C

Ingress Protection (IP) Rating

IP64

Shock

MIL-STD-202 Method 213, Condition D, 500 G (non oper)

Vibration

MIL-STD-202 Method 204, Condition D, 10G RMS (non oper)

Compliance Certifications (see [product page](#) for current document)

Plotted and Other Data

Notes:

Click the following link (or enter part number in "SEARCH" on website) to obtain additional part information including price, inventory and certifications: [SPDT, IP64 Rated Electromechanical Relay Failsafe Switch, DC to 26.5 GHz, 90W, 12VDC, SMA PE71S6526](#)

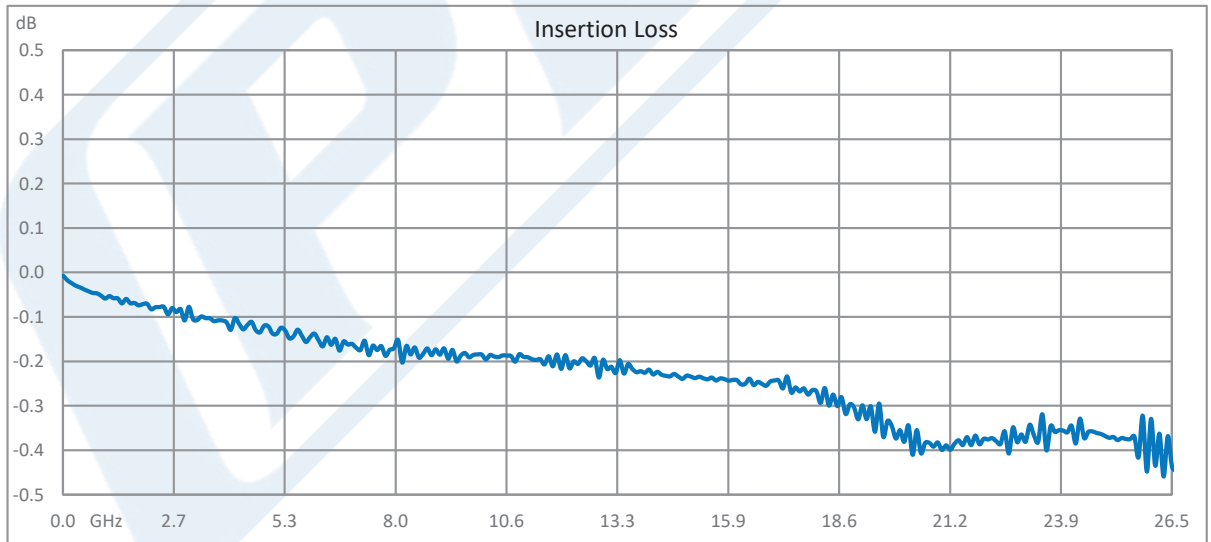
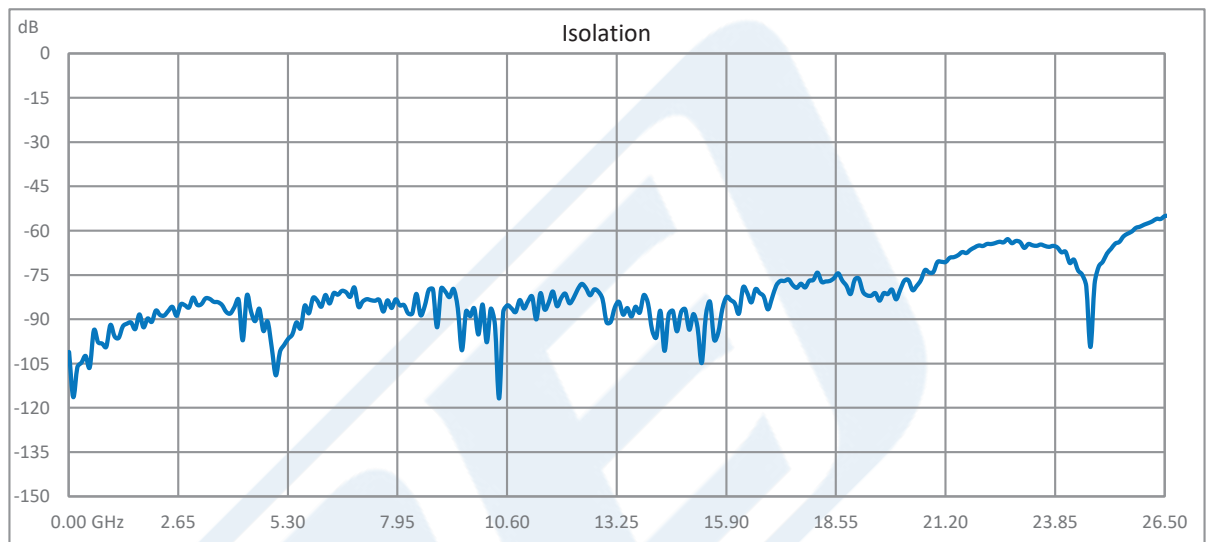


SPDT, IP64 Rated Electromechanical Relay Failsafe Switch, DC to 26.5 GHz, 90W, 12VDC, SMA

Electromechanical Relay Switches Technical Data

PE71S6526

Typical Performance Data



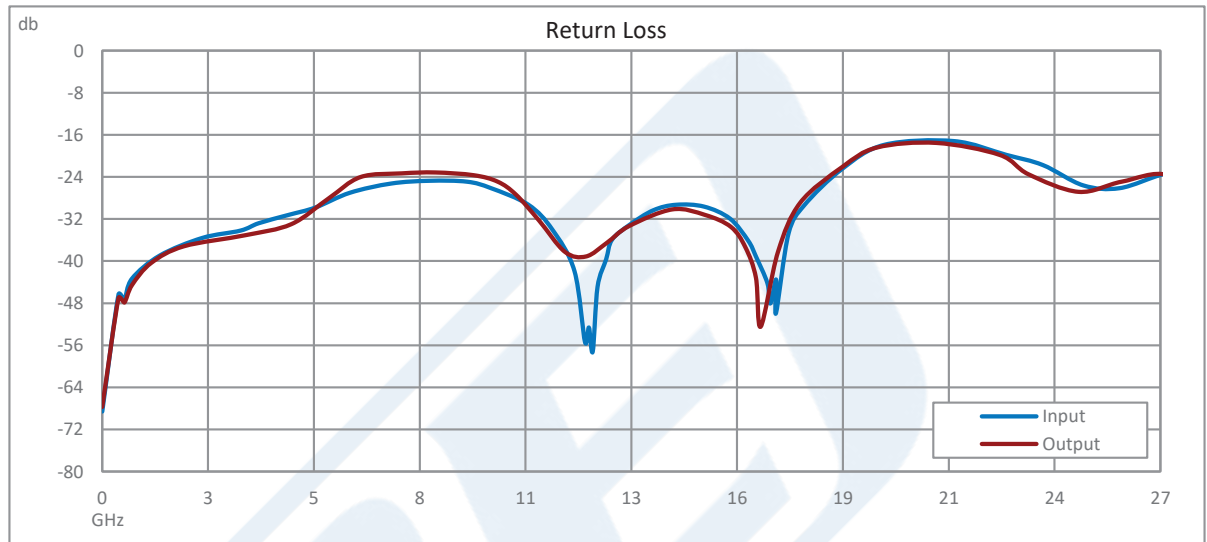
Click the following link (or enter part number in "SEARCH" on website) to obtain additional part information including price, inventory and certifications: [SPDT, IP64 Rated Electromechanical Relay Failsafe Switch, DC to 26.5 GHz, 90W, 12VDC, SMA PE71S6526](#)



SPDT, IP64 Rated Electromechanical Relay Failsafe
Switch, DC to 26.5 GHz, 90W, 12VDC, SMA

Electromechanical Relay Switches Technical Data

PE71S6526



Click the following link (or enter part number in "SEARCH" on website) to obtain additional part information including price, inventory and certifications: [SPDT, IP64 Rated Electromechanical Relay Failsafe Switch, DC to 26.5 GHz, 90W, 12VDC, SMA PE71S6526](#)

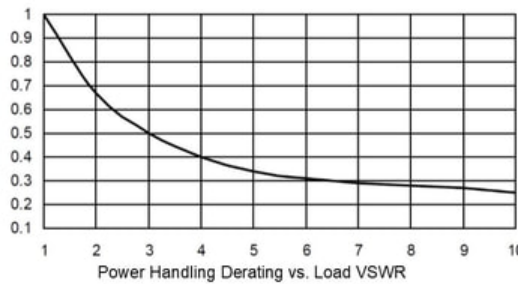
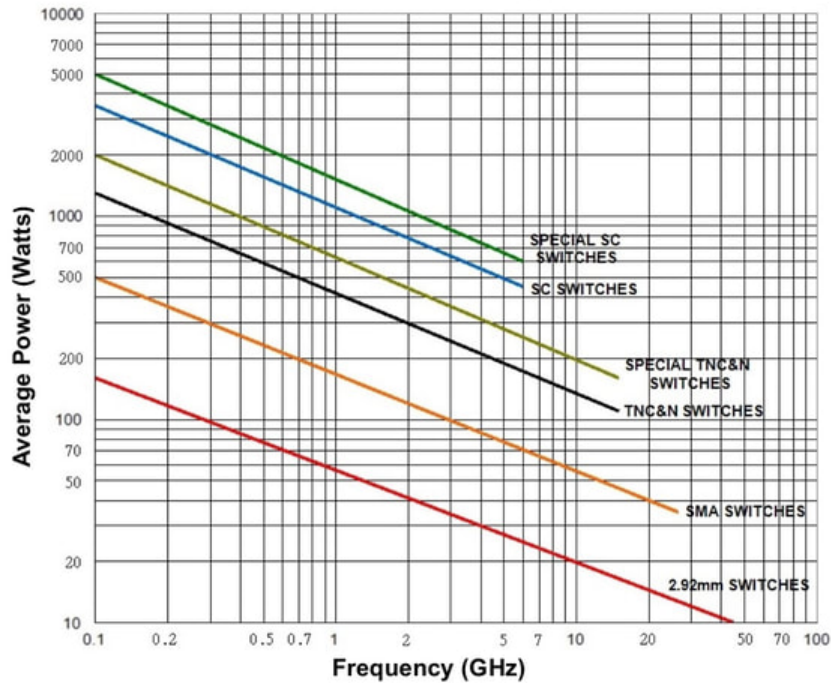


SPDT, IP64 Rated Electromechanical Relay Failsafe Switch, DC to 26.5 GHz, 90W, 12VDC, SMA

Electromechanical Relay Switches Technical Data

PE71S6526

Power Handling vs. Frequency



Power handling chart and derating curves based on the following conditions:

- Ambient temperature: 40°C or less
- Altitude: Sea level
- Load VSWR: 1.20:1 Maximum
- Relative Humidity: 40-50%
- Cold switching: RF signal off

Note: specifications subject to change without notice

Click the following link (or enter part number in "SEARCH" on website) to obtain additional part information including price, inventory and certifications: [SPDT, IP64 Rated Electromechanical Relay Failsafe Switch, DC to 26.5 GHz, 90W, 12VDC, SMA PE71S6526](#)



SPDT, IP64 Rated Electromechanical Relay Failsafe Switch, DC to 26.5 GHz, 90W, 12VDC, SMA

Electromechanical Relay Switches Technical Data

PE71S6526

SPDT, IP64 Rated Electromechanical Relay Failsafe Switch, DC to 26.5 GHz, 90W, 12VDC, SMA from Pasternack Enterprises has same day shipment for domestic and International orders. Our RF, microwave and millimeter wave products maintain a 99.4% availability and are part of the broadest selection in the industry.

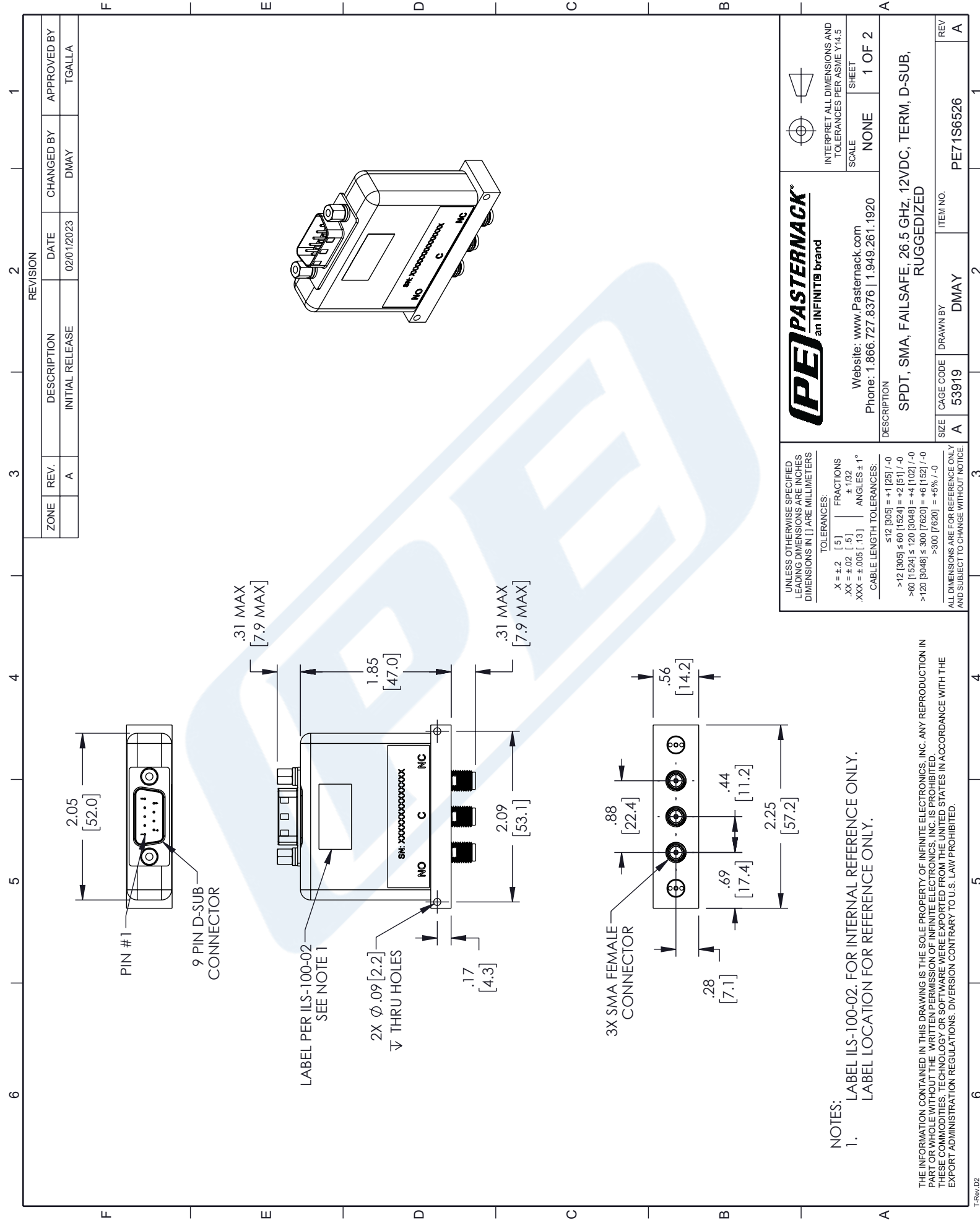
Click the following link (or enter part number in "SEARCH" on website) to obtain additional part information including price, inventory and certifications: [SPDT, IP64 Rated Electromechanical Relay Failsafe Switch, DC to 26.5 GHz, 90W, 12VDC, SMA PE71S6526](#)

URL: <https://www.pasternack.com/spdt-electromechanical-relay-failsafe-switch-26.5-ghz-sma-pe71s6526-p.aspx>

The information contained in this document is accurate to the best of our knowledge and representative of the part described herein. It may be necessary to make modifications to the part and/or the documentation of the part, in order to implement improvements. Pasternack reserves the right to make such changes as required. Unless otherwise stated, all specifications are nominal. Pasternack does not make any representation or warranty regarding the suitability of the part described herein for any particular purpose, and Pasternack does not assume any liability arising out of the use of any part or documentation.

PE71S6526 CAD Drawing

SPDT, IP64 Rated Electromechanical Relay Failsafe Switch, DC to 26.5 GHz, 90W, 12VDC, SMA



REVISION		CHANGED BY		APPROVED BY	
ZONE	REV.	DESCRIPTION	DATE		
	A	INITIAL RELEASE	02/01/2023	DMAY	TGALLA

UNLESS OTHERWISE SPECIFIED LEADING DIMENSIONS ARE INCHES DIMENSIONS IN [] ARE MILLIMETERS

TOLERANCES:

X = ±.2	[.5]	FRACTIONS
.XX = ±.02	[.5]	± 1/32
.XXX = ±.005	[.13]	ANGLES ± 1°

CABLE LENGTH TOLERANCES:

≤ 12 [305]	± .125 / -0
> 12 [305] ≤ 60 [1524]	± .25 / -0
> 60 [1524] ≤ 120 [3048]	± .50 / -0
> 120 [3048] ≤ 300 [7620]	± 1.00 / -0
> 300 [7620]	± 2.00 / -0

ALL DIMENSIONS ARE FOR REFERENCE ONLY AND SUBJECT TO CHANGE WITHOUT NOTICE

PE PASTERNAK®
an INFINITON brand

Website: www.Pasternack.com
Phone: 1.866.727.8376 | 1.949.261.1920

DESCRIPTION
SPDT, SMA, FAILSAFE, 26.5 GHz, 12VDC, TERM, D-SUB, RUGGEDIZED

SCALE	NONE	SHEET	1 OF 2
INTERPRET ALL DIMENSIONS AND TOLERANCES PER ASME Y14.5			

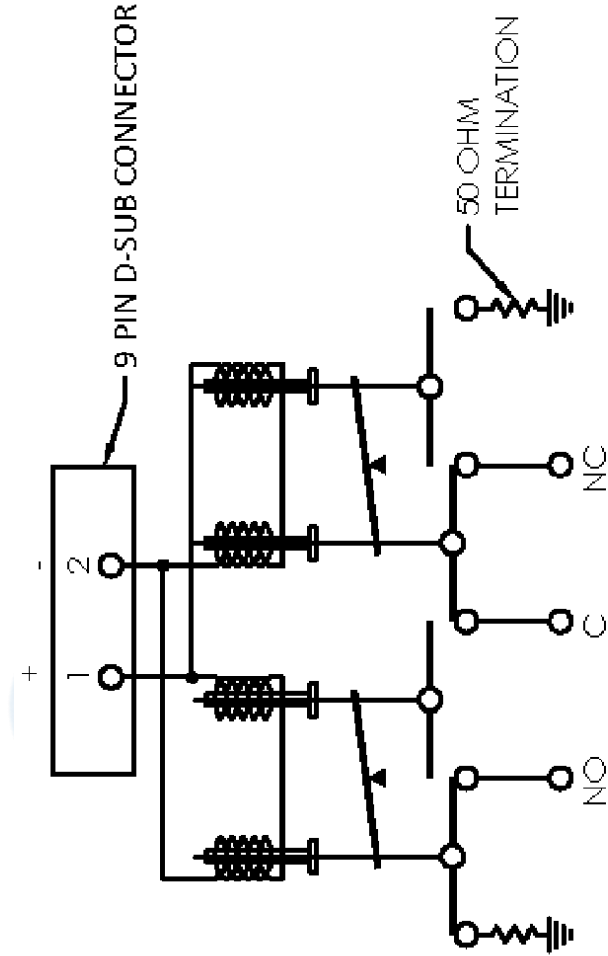
ITEM NO.	ITEM NO.
53919	PE71S6526
DRAWN BY	DMAY
CAGE CODE	
A	
REV	A

NOTES:
1. LABEL ILS-100-02. FOR INTERNAL REFERENCE ONLY.
LABEL LOCATION FOR REFERENCE ONLY.

THE INFORMATION CONTAINED IN THIS DRAWING IS THE SOLE PROPERTY OF INFINITE ELECTRONICS, INC. ANY REPRODUCTION IN PART OR WHOLE WITHOUT THE WRITTEN PERMISSION OF INFINITE ELECTRONICS, INC. IS PROHIBITED. THESE COMMODITIES, TECHNOLOGY OR SOFTWARE WERE EXPORTED FROM THE UNITED STATES IN ACCORDANCE WITH THE EXPORT ADMINISTRATION REGULATIONS. DIVERSION CONTRARY TO U.S. LAW PROHIBITED.

PE71S6526 CAD Drawing

F SPDT, IP64 Rated E Electromechanical D Relay Failsafe Switch, C DC to 26.5 GHz, B 90W, 12VDC, SMA A



SCHEMATIC (FAILSAFE POSITION)

UNLESS OTHERWISE SPECIFIED LEADING DIMENSIONS ARE INCHES DIMENSIONS IN [] ARE MILLIMETERS

TOLERANCES:
 X = ±.2 [.5] FRACTIONS
 .XX = ±.02 [.5] ±.132
 .XXX = ±.005 [.13] ANGLES ± 1°

CABLE LENGTH TOLERANCES:
 ≤12 [305] = +1 [25] / -0
 >12 [305] ≤ 60 [1524] = +2 [51] / -0
 >60 [1524] ≤ 120 [3048] = +4 [102] / -0
 >120 [3048] ≤ 300 [7620] = +6 [152] / -0
 >300 [7620] = +5% / -0

ALL DIMENSIONS ARE FOR REFERENCE ONLY AND SUBJECT TO CHANGE WITHOUT NOTICE

THE INFORMATION CONTAINED IN THIS DRAWING IS THE SOLE PROPERTY OF INFINITE ELECTRONICS, INC. ANY REPRODUCTION IN PART OR WHOLE WITHOUT THE WRITTEN PERMISSION OF INFINITE ELECTRONICS, INC. IS PROHIBITED. THESE COMMODITIES, TECHNOLOGY OR SOFTWARE WERE EXPORTED FROM THE UNITED STATES IN ACCORDANCE WITH THE EXPORT ADMINISTRATION REGULATIONS. DIVERSION CONTRARY TO U.S. LAW PROHIBITED.

	INTERPRET ALL DIMENSIONS AND TOLERANCES PER ASME Y14.5	SHEET 2 OF 2
	SCALE NONE	REV A
PE PASTERNAK® an INFINITIB® brand		
Website: www.Pasternack.com Phone: 1.866.727.8376 1.949.261.1920		
DESCRIPTION SPDT, SMA, FAILSAFE, 26.5 GHz, 12VDC, TERM, D-SUB, RUGGEDIZED		
SIZE A	CAGE CODE 53919	DRAWN BY DMAY
ITEM NO. PE71S6526		REV A