

**SP6T Electromechanical Relay Latching Switch,  
 +COM, DC to 18 GHz, 90W, 28VDC, SMA**

The FMSW6576 is a Single Pole Six Throw (SP6T) electromechanical relay switch that operates across a broadband frequency range from DC to 18 GHz and can handle 90W of average power in a break before make condition. The 50 Ohm design supports a positive common (+COM) biasing configuration and features a Latching Actuator with a 5 million lifecycle rating. The Latching Actuator magnetically latches in place after the control voltage is removed. For power sensitive applications, this is the best actuator option. Impressive typical performance includes 0.4 dB insertion loss and isolation greater than 80 dB. This switch requires 28 Vdc bias voltage and operates over a temperature range of -25°C to +65°C. The rugged and compact package assembly supports SMA female connectors and a 15 Pin D-SUB Connector for DC control. And for highly reliable operation, the model is guaranteed to meet MIL-STD-202 environmental test conditions for sh°ck and random vibration.

**Electrical Specifications** (TA = +25°C, DC Voltage = 28 Vdc)

Switch Type SP6T  
 Actuator Type Latching

Description	Min	Typ	Max	Units
Frequency Range	DC		18	GHz
Operating Voltage	26	28	30	Volts
Actuating Current @ 28 Volts		110		mA
Actuating Reset Current		660		mA
VSWR		1.25:1	1.4:1	
Insertion Loss		0.4	0.5	dB
Isolation		80		dB
Switching Time		20		ms

**Performance by Frequency**

Description	F1	F2	F3	F4	F5	Units
Frequency Range	DC - 6	6 - 12	12 - 18			GHz
VSWR, Max	1.25:1	1.4:1	1.5:1			
Insertion Loss, Max	0.2	0.4	0.5			dB
Isolation, Min	80	80	80			dB

**Mechanical Specifications**

**Size**  
 Length 1.95 in [49.53 mm]  
 Width/Diameter 2.75 in [69.85 mm]  
 Height 0.92 in [23.37 mm]  
 Weight 0.186 lbs [84.37 g]

**Connectors**

RF Connector Type SMA Female  
 Control Connector D-Subminiature


**Features:**

- Single Pole Six Throw (SP6T) Electromechanical Relay Switch
- DC to 18 GHz Frequency Range
- Latching Actuator
- Positive Common (+COM) Configuration
- 5M Lifecycle Rating
- Insertion Loss 0.4 dB typ
- Isolation > 80 dB typ
- VSWR as low as 1.25:1 max
- 15 PIN D-SUB Connector for DC Control
- 28 Volt DC Bias
- SMA Female Connectors
- -25°C to +65°C Operating Temperature
- 90 Watt Average Power Handling
- 50 Ohm Design
- Hot Switching Capability - Consult Factory
- S-Parameter Data available upon request
- Rugged Design meets Mil-STD-202 Test Conditions

**Applications:**

- Aerospace & Defense
- Test & Measurement
- Microwave Radio Systems
- Military & Commercial Communication Systems
- Research & Development
- SATCOM
- Wireless Communications
- Enterprise
- IoT

Fairview Microwave  
 301 Leora Ln., Suite 100  
 Lewisville, TX 75056  
 Tel: 1-800-715-4396 / (972) 649-6678  
 Fax: (972) 649-6689  
[www.fairviewmicrowave.com](http://www.fairviewmicrowave.com)  
[sales@fairviewmicrowave.com](mailto:sales@fairviewmicrowave.com)

**Environmental Specifications**

**Temperature**

Operating Range -25 to +65 deg C  
Storage Range -55 to +100 deg C

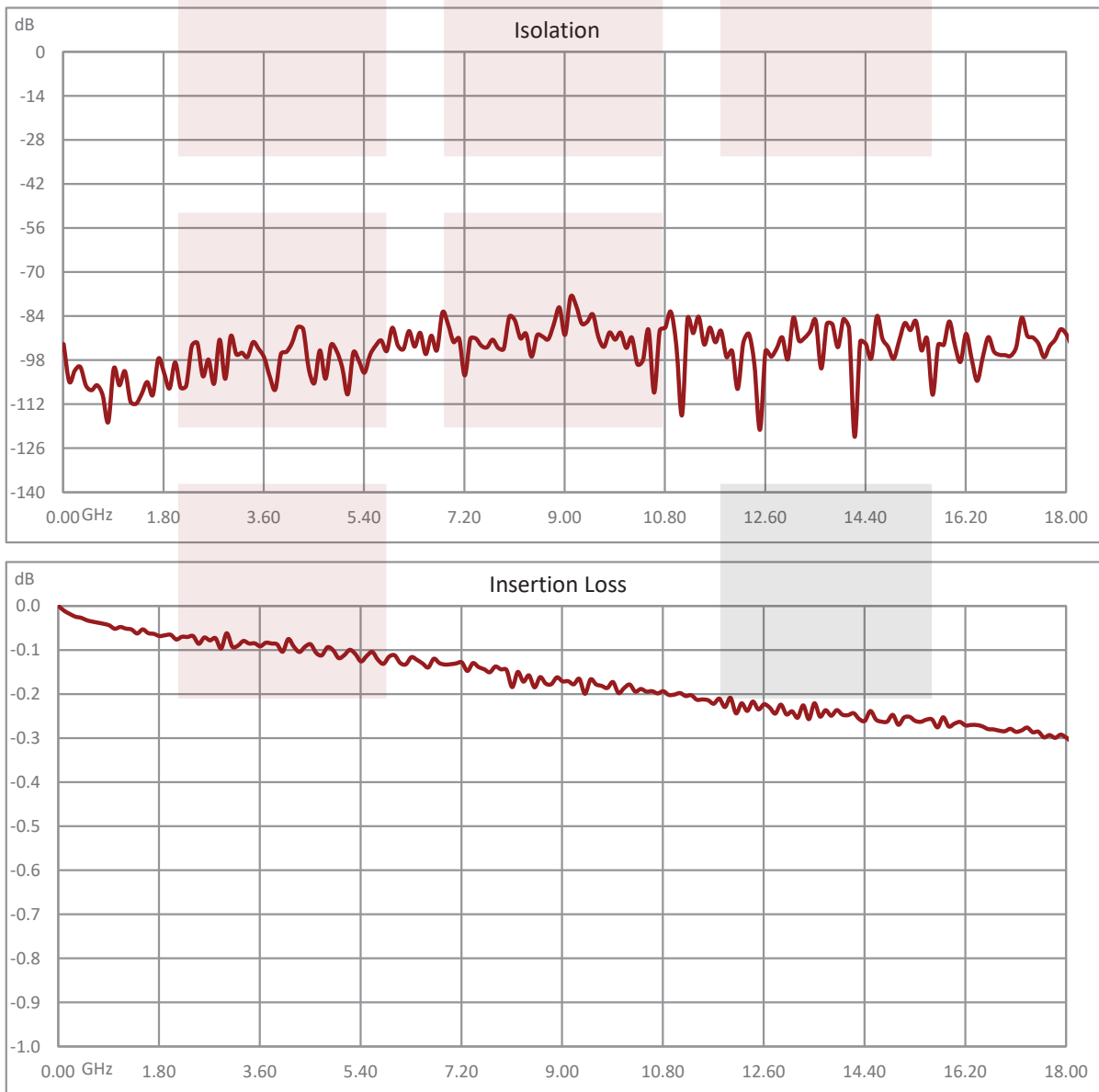
Shock MIL-STD-202 Method 213, Condition D, 500G (non oper)  
Vibration MIL-STD-202 Method 204, Condition D, 10G RMS (non oper)

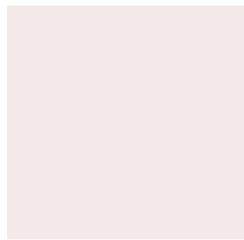
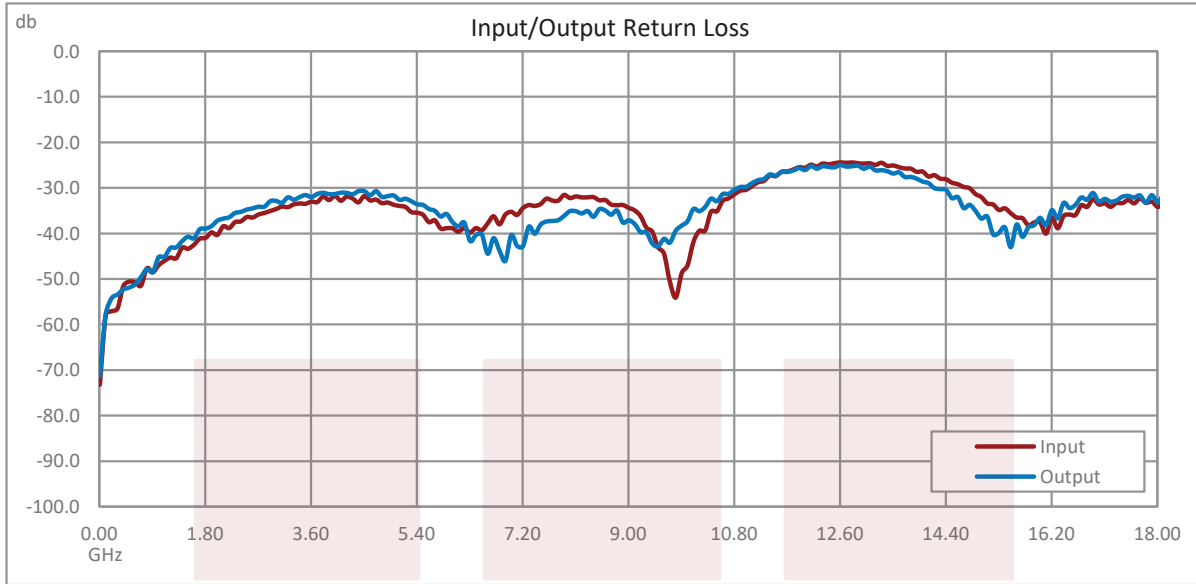
**Compliance Certifications** (see [product page](#) for current document)

**Plotted and Other Data**

Notes:

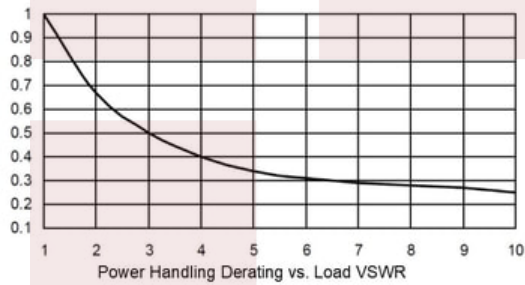
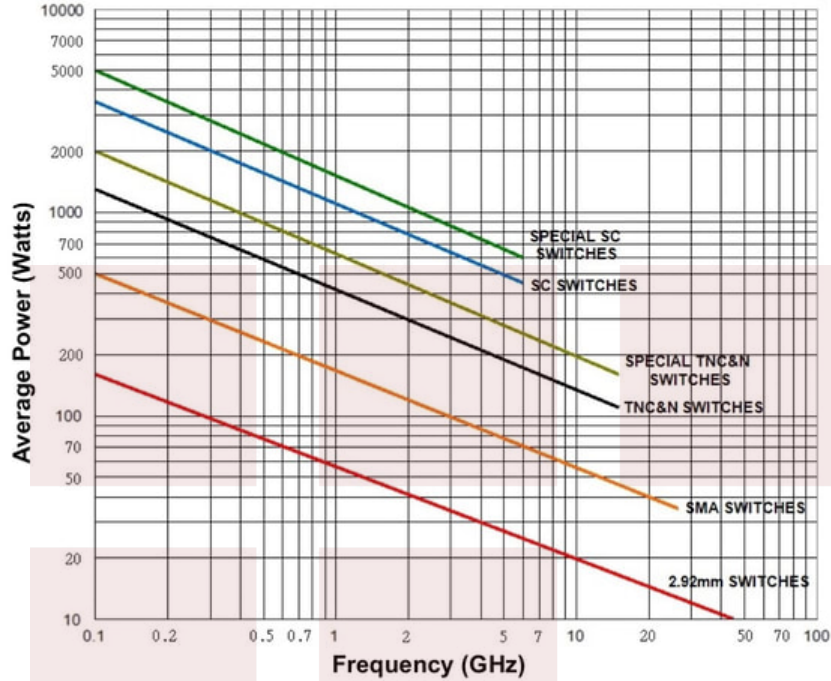
**Typical Performance Data**





**Power Handling vs. Frequency**

**Power Handling vs. Frequency**



Power handling chart and derating curves based on the following conditions:

- Ambient temperature: 40°C or less
- Altitude: Sea level
- Load VSWR: 1.20:1 Maximum
- Relative Humidity: 40-50%
- Cold switching: RF signal off

Note: specifications subject to change without notice

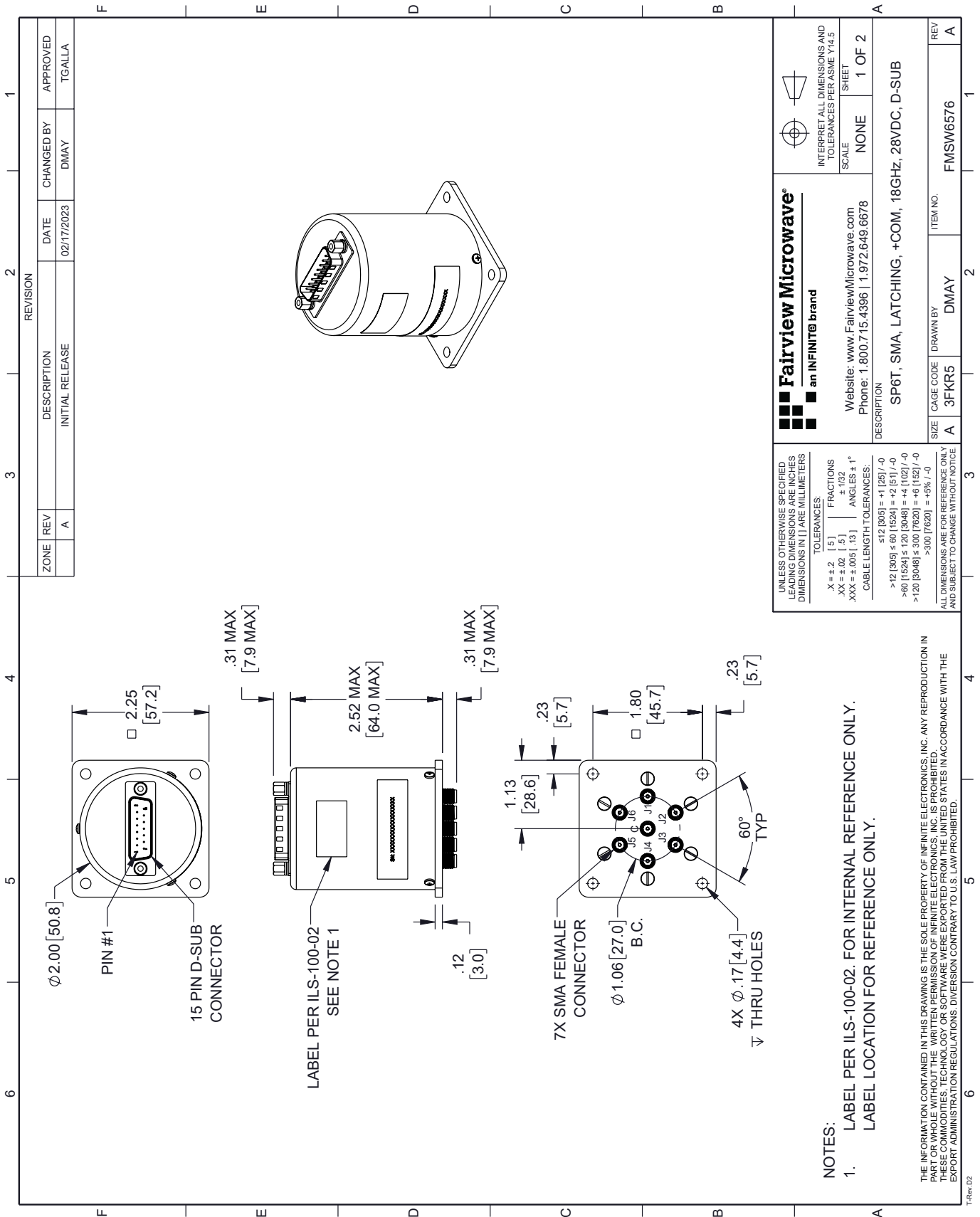
SP6T Electromechanical Relay Latching Switch, +COM, DC to 18 GHz, 90W, 28VDC, SMA from Fairview Microwave is in-stock and available to ship same-day. All of our RF/microwave products are available off-the-shelf from our ISO 9001:2008 certified facilities in Lewisville, Texas. Fairview Microwave is RF on-demand.

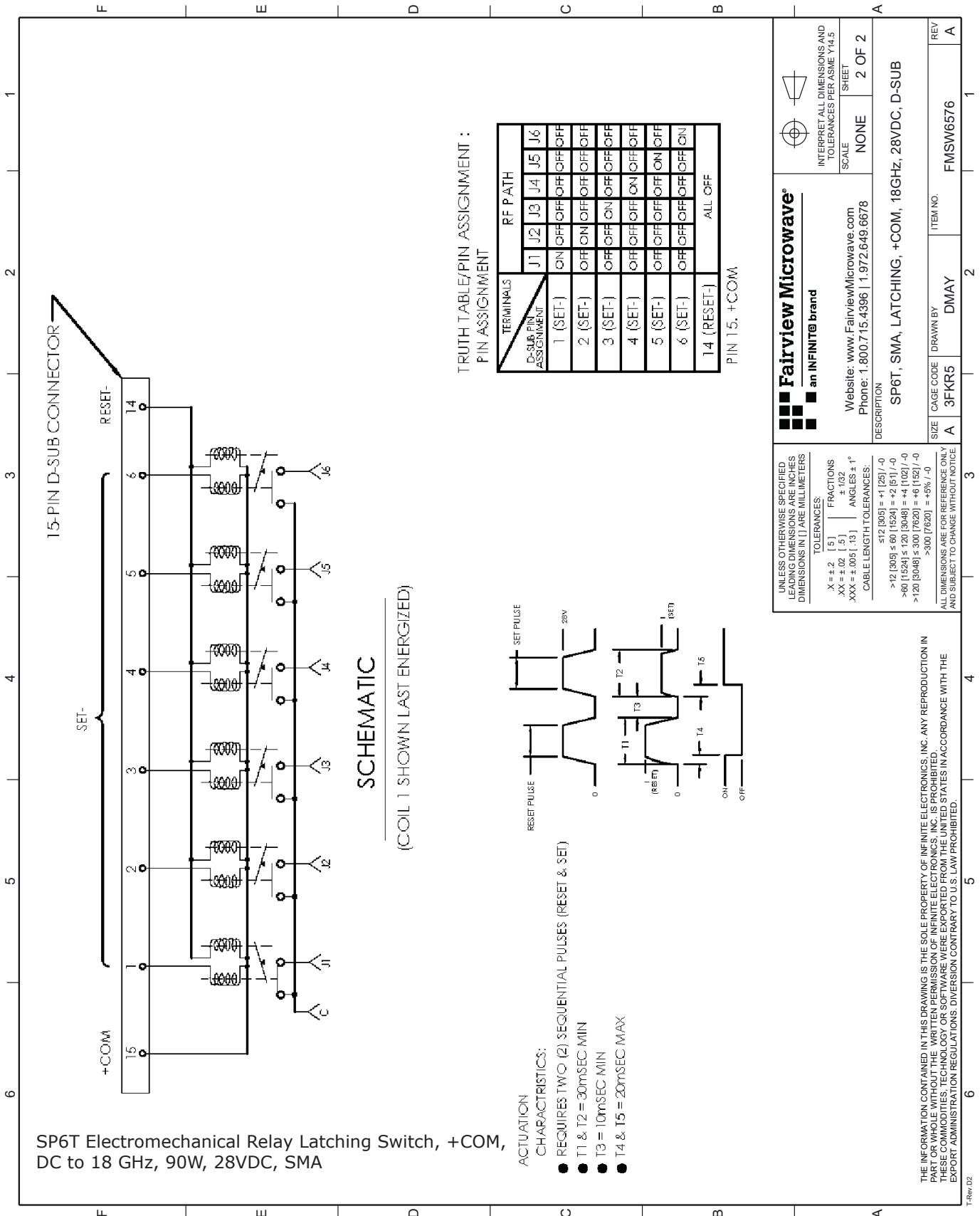
For additional information on this product, please click the following link: [SP6T Electromechanical Relay Latching Switch, +COM, DC to 18 GHz, 90W, 28VDC, SMA FMSW6576](#)

URL: <https://www.fairviewmicrowave.com/sp6t-latching-18-ghz-electro-mechanical-relay-switch-28v-sma-fmsw6576-p.aspx>

The information contained in this document is accurate to the best of our knowledge and representative of the part described herein. It may be necessary to make modifications to the part and/or the documentation of the part, in order to implement improvements. Fairview Microwave reserves the right to make such changes as required. Unless otherwise stated, all specifications are nominal. Fairview Microwave does not make any representation or warranty regarding the suitability of the part described herein for any particular purpose, and Fairview Microwave does not assume any liability arising out of the use of any part or documentation.







**Fairview Microwave**  
an INFINIT<sup>®</sup> brand

Website: [www.FairviewMicrowave.com](http://www.FairviewMicrowave.com)  
Phone: 1.800.715.4396 | 1.972.649.6678

INTERPRET ALL DIMENSIONS AND TOLERANCES PER ASME Y14.5 SHEET SCALE NONE 2 OF 2

DESCRIPTION: SP6T, SMA, LATCHING, +COM, 18GHZ, 28VDC, D-SUB

SIZE: A CAGE CODE: 3FKR5 DRAWN BY: DMAY ITEM NO.: FMSW6576 REV: A

UNLESS OTHERWISE SPECIFIED, LEADING DIMENSIONS ARE INCHES DIMENSIONS IN [ ] ARE MILLIMETERS

TOLERANCES:  
 .X = ±.2 [ .5 ] FRACTIONS  
 .XX = ±.02 [ .5 ] ANGLES ± 1°  
 .XXX = ±.005 [ .13 ]  
 CABLE LENGTH TOLERANCES:  
 >12 [305] ≤ +1 [25] / -0  
 >60 [1524] ≤ +2 [51] / -0  
 >120 [3048] ≤ +4 [102] / -0  
 >300 [7620] ≤ +6 [152] / -0  
 >600 [15240] ≤ +8 [203] / -0

ALL DIMENSIONS ARE FOR REFERENCE ONLY AND SUBJECT TO CHANGE WITHOUT NOTICE

THE INFORMATION CONTAINED IN THIS DRAWING IS THE SOLE PROPERTY OF INFINITE ELECTRONICS, INC. ANY REPRODUCTION IN PART OR WHOLE WITHOUT THE WRITTEN PERMISSION OF INFINITE ELECTRONICS, INC. IS PROHIBITED. THESE COMMODITIES, TECHNOLOGY OR SOFTWARE WERE EXPORTED FROM THE UNITED STATES IN ACCORDANCE WITH THE EXPORT ADMINISTRATION REGULATIONS. DIVERSION CONTRARY TO U.S. LAW PROHIBITED.