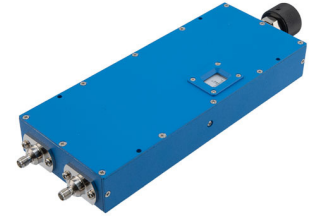


## Adjustable Phase Shifter, DC to 2GHz, With an Adjustable Phase of 90 Deg. Per GHz and SMA

Fairview Microwave FM82P5007 is a phase shifter that has phase adjustment range of 90 degrees per GHz with precision rotary dial design for controllable phase adjustment across a frequency range from 0 to 2GHz. With SMA female connectors, this RF phase shifter design is tried and true technology that offers exceptional RF performance characteristics that include 0.8 dB maximum insertion loss and a maximum VSWR of 1.3:1. Phase shifters are part of Pasternack's comprehensive RF passive product offerings which are available in stock and ready for same-day shipment.



### Features:

- Phase Tuning Range: 0 to 180 degrees
- Rotary Dial Design for Continuous Adjustment
- Frequency Range from DC to 2GHz
- SMA Female Connectorized Design
- Max VSWR 1.3:1
- Max Power Rating: 100 Watts (CW)
- Insertion Loss: 0.8 dB Max

### Applications:

- Test & Measurements
- Radar Development
- Military Communications Systems
- Phase Array Antenna System
- Satellite Communications

### Electrical Specifications (Values at +25° C, Sea Level)

Description	Min	Typ	Max	Units
Frequency Range	DC		2	GHz
Impedance		50		Ohms
Phase Shift	0		180	Degrees
Phase Adjustment	0		90	Deg/GHz
Input VSWR			1.3:1	
Output VSWR				
Insertion Loss			0.8	dB
Input Power, CW			100	Watts
Input Power, Peak			5	kWatts
	5μs pulse, 2% duty cycle			

### Mechanical Specifications

#### Size

Length	9.29 in [235.97 mm]
Width/Diameter	2.99 in [75.95 mm]
Height	1.2 in [30.48 mm]
Weight	1.35 lbs [612.35 g]
Body Material and Plating	Aluminum

#### Configuration

Input Connector	SMA Female
Output Connector	SMA Female

### Environmental Specifications

#### Temperature

Operating Range	-10 to 50 deg C
Storage Range	-40 to 70 deg C

### Compliance Certifications (see [product page](#) for current document)

### Plotted and Other Data

Notes:

Fairview Microwave  
 301 Leora Ln., Suite 100  
 Lewisville, TX 75056  
 Tel: 1-800-715-4396 / (972) 649-6678  
 Fax: (972) 649-6689  
[www.fairviewmicrowave.com](http://www.fairviewmicrowave.com)  
[sales@fairviewmicrowave.com](mailto:sales@fairviewmicrowave.com)

Adjustable Phase Shifter, DC to 2GHz, With an Adjustable Phase of 90 Deg. Per GHz and SMA from Fairview Microwave is in-stock and available to ship same-day. All of our RF/microwave products are available off-the-shelf from our ISO 9001:2008 certified facilities in Lewisville, Texas. Fairview Microwave is RF on-demand.

For additional information on this product, please click the following link: [Adjustable Phase Shifter, DC to 2GHz, With an Adjustable Phase of 90 Deg. Per GHz and SMA FM82P5007](#)

URL: <https://www.fairviewmicrowave.com/sma-adjustable-phase-shifter-dc-2-ghz-fm82p5007-p.aspx>

The information contained in this document is accurate to the best of our knowledge and representative of the part described herein. It may be necessary to make modifications to the part and/or the documentation of the part, in order to implement improvements. Fairview Microwave reserves the right to make such changes as required. Unless otherwise stated, all specifications are nominal. Fairview Microwave does not make any representation or warranty regarding the suitability of the part described herein for any particular purpose, and Fairview Microwave does not assume any liability arising out of the use of any part or documentation.



