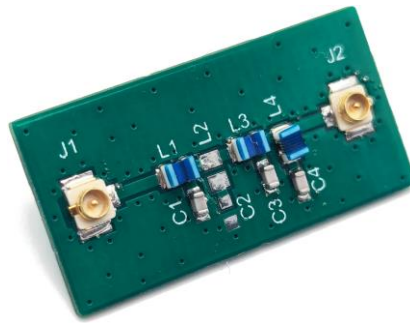


915 MHz PCB Low Pass Filter for Telecommunication



General information

Low-loss 915MHz LPF, Low amplitude ripple, Designed for 50 ohm Source/Load

Typical applications

RF filter for Telecommunication, VPF equipment, Remote controller, TBS Crossfire

Electrical data

Filter type	Embedded / internal PCB Filter	
Bands	0...915MHz	
Frequency [MHz]	868	915
Transmission coefficient [dB]	-0.7	-1
Ripple [dB]	0.5	
VSWR	1.3	2
Maximum input power [W]	-	

Mechanical data

Filter PCB dimensions [mm]	13.2 x 26 x 1
Connector type ¹⁾	U.FL ¹⁾
PCB material	FR4

Environmental data

Operating temperature [°C]	-40...+85
Storage temperature [°C]	-40...+85
Ambient relative humidity [%]	0...85
RoHS / REACH compliant	yes / yes

Additional information

¹⁾ Other connector types can be offered on request.

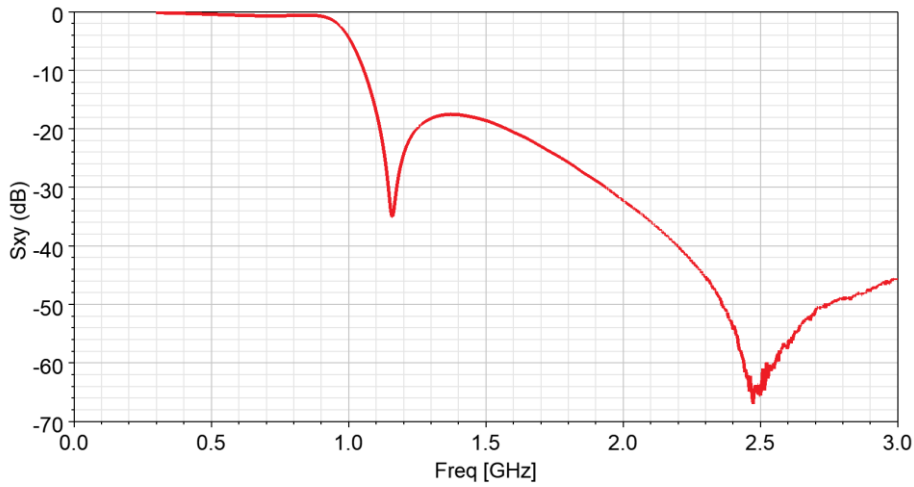
Filter's performance was measured in free space and at normal conditions.

Further customization, electromagnetic simulations and measurements can be offered on request.

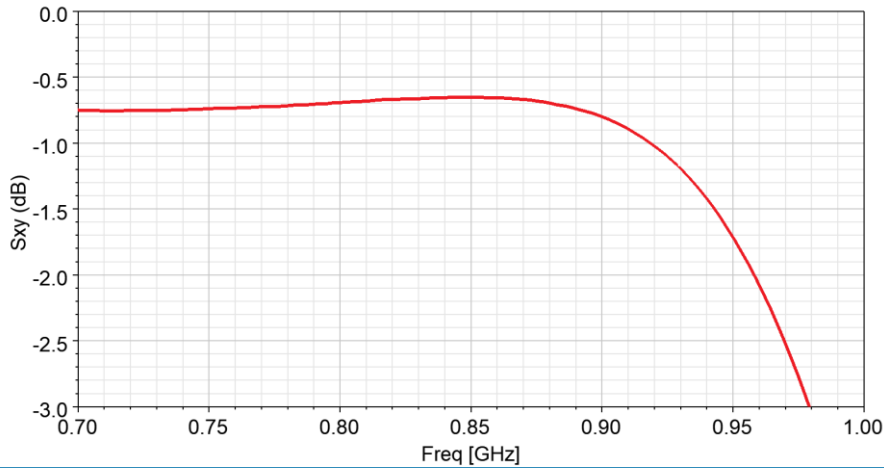
The filter can be additionally equipped with mounting holes.

915 MHz PCB Low Pass Filter for Telecommunication

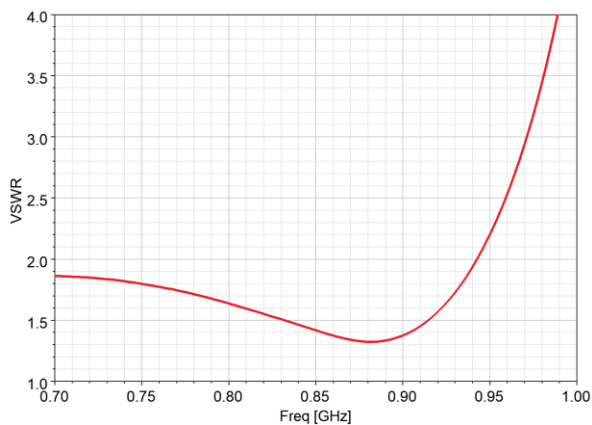
Measured transmission coefficient WB



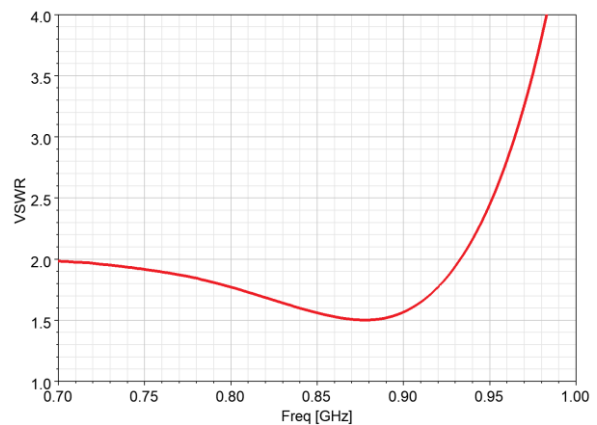
Measured transmission coefficient NB



Measured input/output matching (VSWR)



Input Port



Output Port

All information (including technical data and pictures) presented in this document is typical and subject to change without notice. Sevskiy is a registered trade mark of Sevskiy GmbH. Copyright © 2009 - 2024 Sevskiy GmbH. All rights reserved. No warranties.