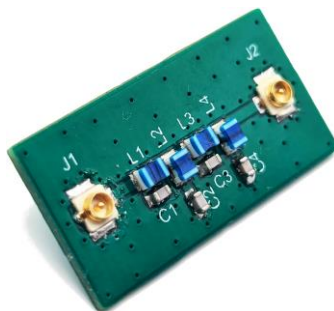


**410 – 915 MHz PCB Band Stop Filter for Telecommunication**



**General information**

410MHz...915MHz PCB BSF, Low insertion loss outside rejection band, Designed for 50 ohm Source/Load, Notch Filter – High Q and high rejection

**Typical applications**

RF filter for Telecommunication, VPF equipment, Remote controller, TBS Crossfire

**Electrical data**

Filter type	Embedded / internal PCB Filter		
Bands	410MHz...915MHz		
Frequency [GHz]	0.41	0.662	0.915
Transmission coef. [dB]	-8	-20	-20
Maximum input power [W]	-		

**Mechanical data**

Filter PCB dimensions [mm]	13.2 x 26 x 1
Connector type <sup>2)</sup>	U.FL <sup>2)</sup>
PCB material	FR4

**Environmental data**

Operating temperature [°C]	-40...+85
Storage temperature [°C]	-40...+85
Ambient relative humidity [%]	0...85
RoHS / REACH compliant	yes / yes

**Additional information**

<sup>1)</sup> Design target, for other frequencies see transmission coefficient curve.

<sup>2)</sup> Other connector types can be offered on request.

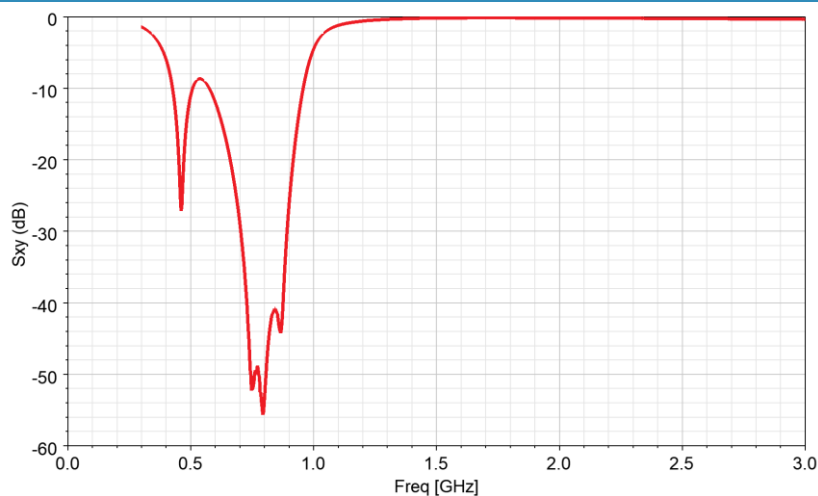
Filter's performance was measured in free space and at normal conditions.

Further customization, electromagnetic simulations and measurements can be offered on request.

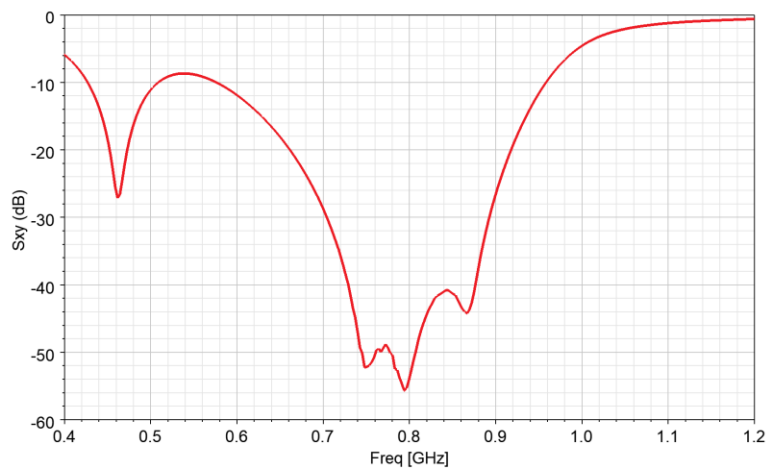
The filter can be additionally equipped with mounting holes.

**410 – 915 MHz PCB Band Stop Filter for Telecommunication**

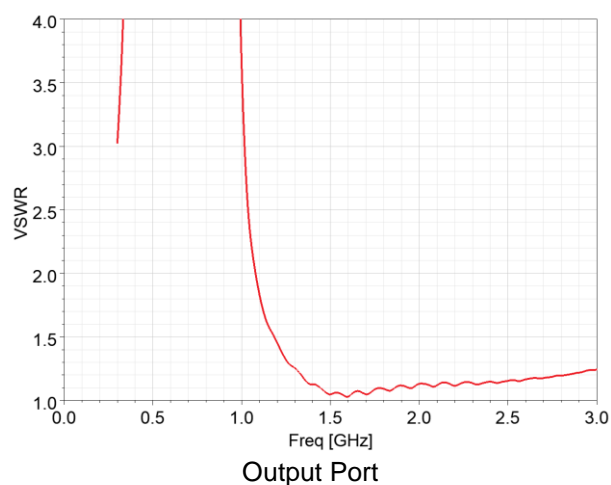
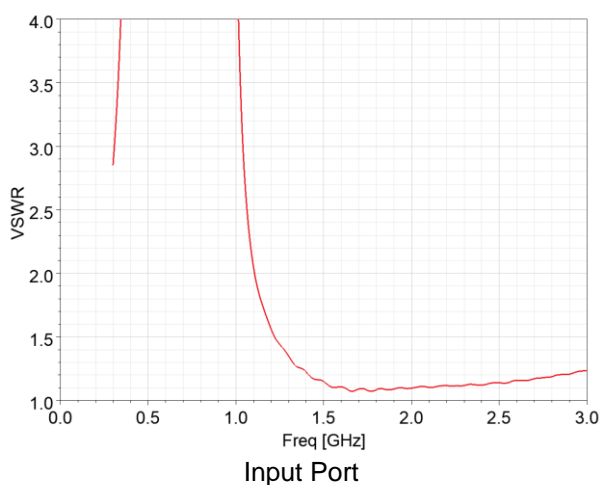
**Measured transmission coefficient WB**



**Measured transmission coefficient NB**



**Measured input/output matching (VSWR)**



All information (including technical data and pictures) presented in this document is typical and subject to change without notice. Sevskiy is a registered trade mark of Sevskiy GmbH. Copyright © 2009 - 2023 Sevskiy GmbH. All rights reserved. No warranties.