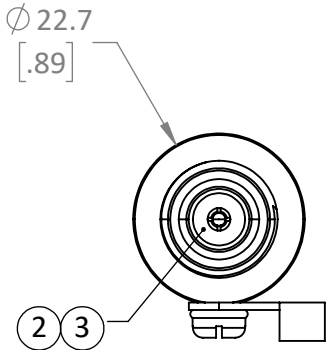
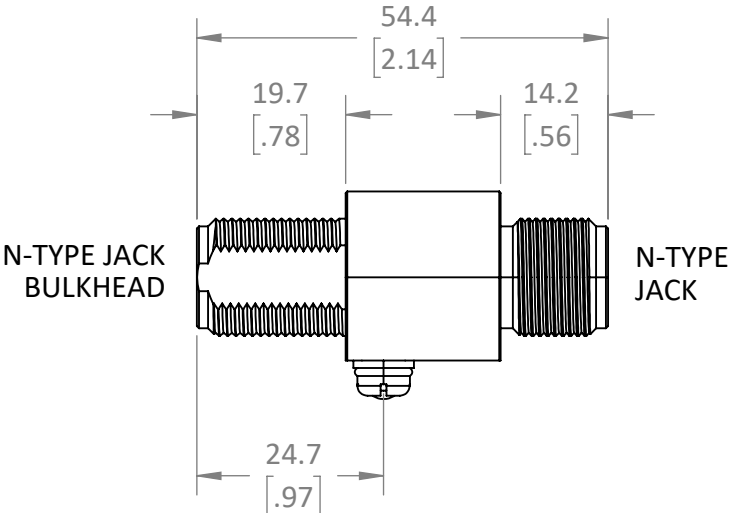
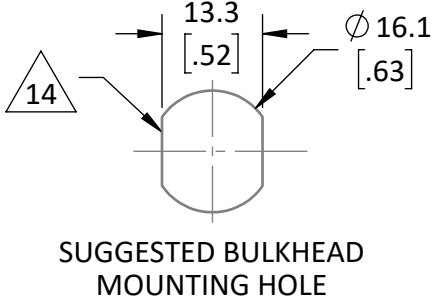


REVISIONS			
REV	DESCRIPTION	DATE	APPV
A	PRODUCTION RELEASE	JHAGER 9/21/21	


- NOTES: (UNLESS OTHERWISE SPECIFIED)
- ALL DIMENSIONS ARE IN MILLIMETERS [IN].
 - DIMENSIONS APPLY AFTER FINISHING.
 - MANUFACTURE TO BE COMPLIANT WITH EU RoHS DIRECTIVE,USE MATERIALS THAT DO NOT CONTAIN REACH SUBSTANCES OF VERY HIGH CONCERN >1000ppm, AND USE DRC CONFLICT-FREE SOURCED MATERIALS.
 - IMPEDANCE: 50Ω
 - FREQUANCY RANGE: DC~8GHz [PASS THROUGH]
 - INSERTION LOSS:
 - .08dB @ 2.4 GHz
 - .16dB @ 6 GHz
 - .50dB @ 8 GHz
 - VSWR:
 - 1.2 Max @2.4 GHz
 - 1.0 Max @6 GHz
 - 1.6 Max @8 GHz
 - FUSE CHERACTORISTICS:
 - DC SPARK OVER: 300V
 - IMPULSE DISCHARGE: 10KA (WAVE 8/20 uS)
 - 5 TIMES EACH SIDE
 - REPLACE TUBE AFTER 5 YEARS MAX
 - INSULATION RESISTANCE 2000MΩ
 - INTERFACE N-TYPE JACK IAW MIL-STD-348B
 - BULKHEAD MAXIMUM THICKNESS 6.2mm
 - TEMP RANGE: -55°C+105°C
 - TORQUE BULKHEAD SCREW TO 5in/Lbs MAX. COMPRESS GASKET AGAINCT BULKHEAD.
14. BREAK AND DEBURR ALL SHARP EDGES.
15. DURABILITY 500 CYCLES MINIMUM
16. DESIGNED TO MEET IP67 INGRESS AND ENVIRONMENTAL PERFORMANCE IAW MIL-STD-202
17. SEALED TO IP67 STANDARD



ITEM	QTY	DESCRIPTION
1	1	BODY ASY, ARR, NIC/BRAS,
2	2	INSULATOR, PTFE, WHITE
3	1	PIN, FM-FM, GOLD/BeCu,
4	1	PHP, 10-32UNF-2BX.25in, CRES
5	1	WASHE, SPLIT-LOC, CRES
6	1	RING, CRIMP, 5.5-6mm X 12-14awg, NON INSUL, TIN/COPPER
7	1	GASK, BLKHD, O-RING, SIL, 16mm X 1.5dia, BLAC [SHIP LOOSE]
8	1	WASHE, TOOTH, 16mmX.5mm [SHIP LOOSE]
9	1	BRACK, MOUNTING, ANGLE, ALU, ANO, CCLE [SHIP LOOSE]
10	2	SCREW, PHP, M4-.7 X 10mm CRES [SHIP LOOSE]
11	1	NUT, HEX, SLIM, 19MM 5/8-24UNEF, NIC/BRAS

WARNING: THIS DRAWING CONTAINS PROPRIETARY INFORMATION THAT IS THE SOLE PROPERTY OF LINX TECHNOLOGIES, AND SHALL BE TREATED AS SUCH. NO DISCLOSURE OR REPRODUCTION OF THIS DOCUMENT IS PERMITTED, IN WHOLE OR IN PART, WITHOUT THE EXPRESS WRITTEN PERMISSION OF LINX TECHNOLOGIES OR ITS DESIGNATED AGENTS.

MATERIAL: BRASS BeCu	INTERPRET DIMENSIONS AND TOLERANCES PER ASME Y14.5. .X ±2.0 .XX ±1.00 .XXX ±.500	ANGLES: ±1° SURFACE: √
WEIGHT:		
FINISH: NICKEL GOLD	DRAWN: JHAGER ENGR: DASARATHAN	DT: 9/21/21 DT: 9/21/21



159 ORT LANE
MERLIN, OR 97532

TITLE:
**N-JACK BULKHEAD TO N-JACK
LIGHTNING ARRESTOR**

SIZE B	DWG. NO. C-ARR-NF-NF-B-8	REV A
------------------	-----------------------------	-----------------

SCALE: 1:1 DO NOT SCALE DRAWING SHEET 1 OF 1