



WR-137 Waveguide 10 dB Broadwall Coupler, CPR137F Flange, N-Type Female Coupled Port, 5.38 GHz to 8.17 GHz, Aluminum

Waveguide Couplers Technical Data Sheet

PEW137CP001-10

The PEW137CP001-10 is a WR-137 Directional Broadwall waveguide coupler with N female coupled port that operates in the frequency range of 5.38 to 8.17 GHz. This Waveguide component has a maximum VSWR of 1.25:1. These designs are made of painted aluminum alloy and incorporate a broad wall configuration that result in a mid-band nominal coupling value of 10, 20, 30, 40 or 50 dB. Common applications for this component would be where power measurements are required within a system for measuring/sampling power or frequency monitoring with minimal signal loss to the main transmission line. Pasternack offers a complete family of waveguide Crossguide and Broadwall couplers that are in-stock and ship same day.

Features

- Three Port Broadwall Waveguide Coupler
- 10±0.7 dB Nominal Coupling Level
- Integrated N Female Connector coupled port
- 5.38 GHz to 8.17 GHz Frequency Range
- Main Line VSWR < 1.1:1
- Max Power 150W (CW)

Applications

- Test Benches
- Radar
- Satellite
- Microwave Radio
- Attenuation Measurements
- Power Measurements
- Source Leveling

Electrical Specifications

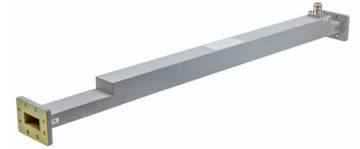
Description	Minimum	Typical	Maximum	Units
Frequency Range	5.38		8.17	GHz
Coupler				
Nominal Coupling Level		10		dB
Directivity	38			dB
Insertion Loss			0.6	dB
Main Line VSWR			1.1:1	
Secondary Line VSWR			1.25:1	
Coupling Flatness			±0.7	dB
Input Power (CW)			150	Watts
Input Power, Peak			2	kWatts

Mechanical Specifications

Size

- Length 25.98 in [659.89 mm]
- Width 2.69 in [68.33 mm]
- Height 1.94 in [49.28 mm]
- Weight 1.465 lbs [664.51 g]
- Flange Type CPR-137F

Click the following link (or enter part number in "SEARCH" on website) to obtain additional part information including price, inventory and certifications: [WR-137 Waveguide 10 dB Broadwall Coupler, CPR137F Flange, N-Type Female Coupled Port, 5.38 GHz to 8.17 GHz, Aluminum PEW137CP001-10](#)



WR-137 Waveguide 10 dB Broadwall Coupler, CPR137F Flange, N-Type Female Coupled Port, 5.38 GHz to 8.17 GHz, Aluminum

Waveguide Couplers Technical Data Sheet

PEW137CP001-10

Flange Material and Plating	Aluminum, Chromate
RF Connector Type	N Female
Coupler Body Material and Plating	Aluminum, Chromate

Environmental Specifications

Compliance Certifications (see [product page](#) for current document)

Plotted and Other Data

Notes:

WR-137 Waveguide 10 dB Broadwall Coupler, CPR137F Flange, N-Type Female Coupled Port, 5.38 GHz to 8.17 GHz, Aluminum from Pasternack Enterprises has same day shipment for domestic and International orders. Our RF, microwave and millimeter wave products maintain a 99.4% availability and are part of the broadest selection in the industry.

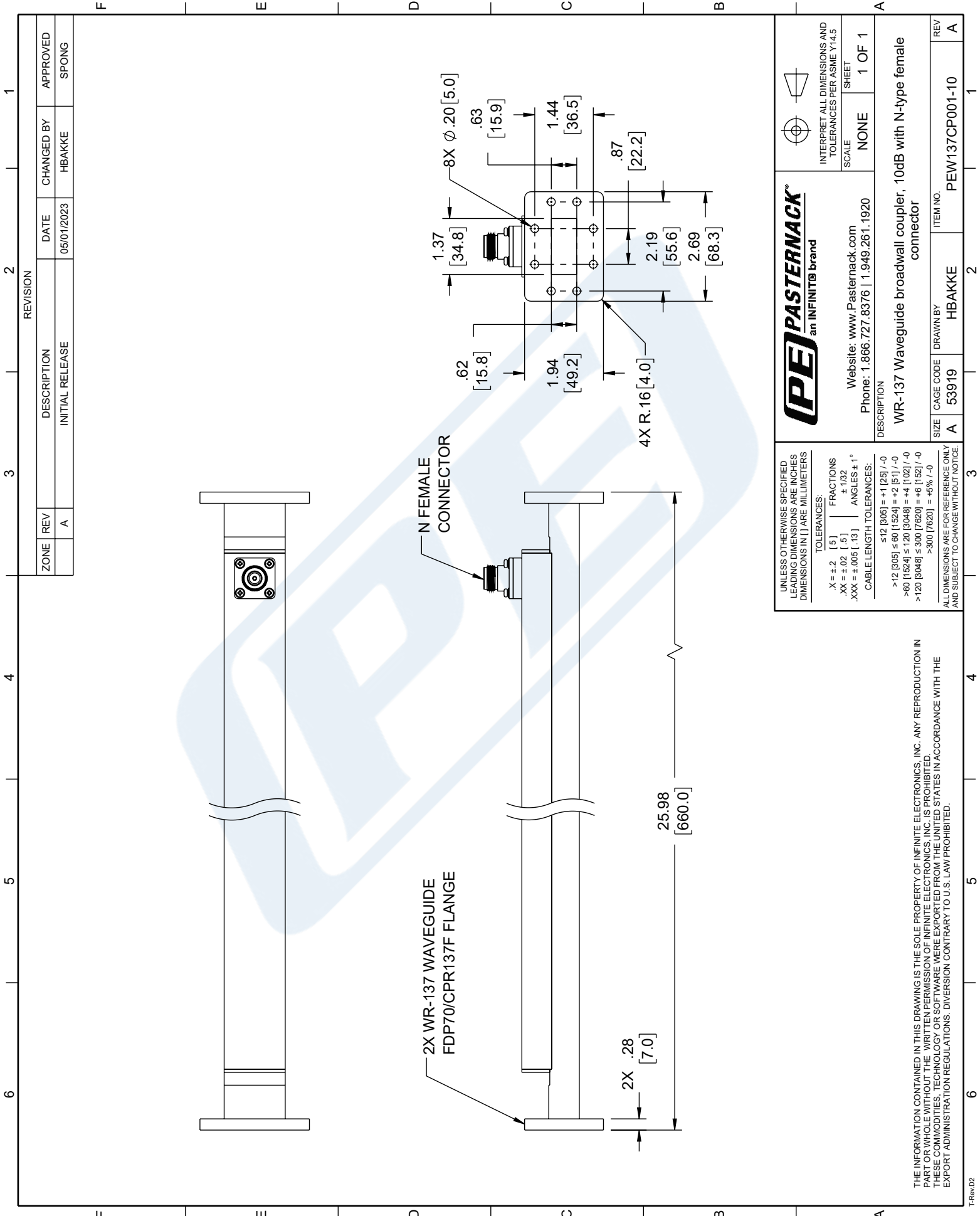
Click the following link (or enter part number in "SEARCH" on website) to obtain additional part information including price, inventory and certifications: [WR-137 Waveguide 10 dB Broadwall Coupler, CPR137F Flange, N-Type Female Coupled Port, 5.38 GHz to 8.17 GHz, Aluminum PEW137CP001-10](#)

URL: <https://www.pasternack.com/wr137-waveguide-10db-broadwall-coupler-cpr-137f-8.17mhz-pew137cp001-10-p.aspx>

The information contained in this document is accurate to the best of our knowledge and representative of the part described herein. It may be necessary to make modifications to the part and/or the documentation of the part, in order to implement improvements. Pasternack reserves the right to make such changes as required. Unless otherwise stated, all specifications are nominal. Pasternack does not make any representation or warranty regarding the suitability of the part described herein for any particular purpose, and Pasternack does not assume any liability arising out of the use of any part or documentation.

PEW137CP001-10 CAD Drawing

WR-137 Waveguide 10 dB Broadwall Coupler, CPR137F Flange, N-Type Female Coupled Port, 5.38 GHz to 8.17 GHz, Aluminum



ZONE	REV	DESCRIPTION	DATE	CHANGED BY	APPROVED
	A	INITIAL RELEASE	05/01/2023	HBAKKE	SPONG

PE PASTERNAK
an INFINIT® brand

Website: www.Pasternack.com
Phone: 1.866.727.8376 | 1.949.261.1920

DESCRIPTION: WR-137 Waveguide broadwall coupler, 10dB with N-type female connector

INTERPRET ALL DIMENSIONS AND TOLERANCES PER ASME Y14.5

SCALE: NONE SHEET: 1 OF 1

ITEM NO. PEW137CP001-10

UNLESS OTHERWISE SPECIFIED LEADING DIMENSIONS ARE INCHES DIMENSIONS IN [] ARE MILLIMETERS

TOLERANCES:

.X = ±.2	[.5]	FRACTIONS	±.1/32
.XX = ±.02	[.5]	ANGLES ± 1°	
.XXX = ±.005	[.13]	CABLE LENGTH TOLERANCES:	

ALL DIMENSIONS ARE FOR REFERENCE ONLY AND SUBJECT TO CHANGE WITHOUT NOTICE.

THE INFORMATION CONTAINED IN THIS DRAWING IS THE SOLE PROPERTY OF INFINITE ELECTRONICS, INC. ANY REPRODUCTION IN PART OR WHOLE WITHOUT THE WRITTEN PERMISSION OF INFINITE ELECTRONICS, INC. IS PROHIBITED. THESE COMMODITIES, TECHNOLOGY OR SOFTWARE WERE EXPORTED FROM THE UNITED STATES IN ACCORDANCE WITH THE EXPORT ADMINISTRATION REGULATIONS. DIVERSION CONTRARY TO U.S. LAW PROHIBITED.