



Directional 30 dB N Coupler from 100 MHz to 800 MHz Rated to 500 Watts

Couplers Technical Data Sheet

PE2CP1143-30

Features

- Directional Coupler
- N Female Connectorized Design
- 100 to 800 MHz Frequency Range
- Coupling 30±1.5 dB
- Directivity > 20 dB
- VSWR < 1.2:1
- Max Power 500 Watts (CW)

Applications

- Test and Measurement
- Military Communications
- Commercial Communications
- Wireless Communications
- SATCOM

Description

Directional couplers are indispensable components for isolating, separating and combining signals. For example, they provide a simple way of sampling microwave signals. They also can make accurate attenuator measurements since reflections are eliminated. The PE2CP1143-30 is a 30 dB directional coupler that operates from 100 to 800 MHz and can handle up to 500 Watts (CW) with 20 dB directivity minimum and 1.2:1 VSWR maximum. The package interface uses N female connectors.

The PE2CP1143-30 is part of Pasternack's family of directional/dual-directional couplers that offer coupling ratios up to 50 dB with excellent performance featuring high directivity, low insertion loss and VSWR. They are available in both narrow and broad bandwidths and can be used in a wide variety of applications including signal sampling, VSWR measurements, power combining and distribution.

Electrical Specifications

Description	Minimum	Typical	Maximum	Units
Frequency Range	100		800	MHz
Impedance		50		Ohms
Coupling	29	30	33	dB
Frequency Sensitivity		±0.7	±1.5	dB
Insertion Loss		0.2	0.4	dB
Directivity	20	22		dB
Main Line VSWR		1.15:1	1.2:1	
Secondary Line VSWR		1.15:1	1.2:1	
Input Power (CW)			500	Watts
Input Power (Peak) 10% Duty Cycle, 10us PW			3	kWatts

Click the following link (or enter part number in "SEARCH" on website) to obtain additional part information including price, inventory and certifications: [Directional 30 dB N Coupler from 100 MHz to 800 MHz Rated to 500 Watts PE2CP1143-30](#)



Directional 30 dB N Coupler from 100 MHz
to 800 MHz Rated to 500 Watts

Couplers Technical Data Sheet

PE2CP1143-30

Mechanical Specifications

Size

Length	12.402 in [315.01 mm]
Width/Dia.	1.521 in [38.63 mm]
Height	1.053 in [26.75 mm]
Weight	1.75 lbs [793.79 g]
Housing Material and Plating	Aluminum

Configuration

Input Connector	N Female
Output Connector	N Female
Coupled Connectors	N Female

Environmental Specifications

Temperature

Operating Range	-40 to +85 deg C
Storage Range	-50 to +105 deg C

Humidity	100% RH at 35°C, 95%RH at 40°C
Shock	20G for 11msec half sine wave, 3 axis both directions
Vibration	25g RMS (15 degrees 2KHz) endurance, 1 hour per axis
Altitude	30,000 ft.

Compliance Certifications (see [product page](#) for current document)

Plotted and Other Data

Notes:

Directional 30 dB N Coupler from 100 MHz to 800 MHz Rated to 500 Watts from Pasternack Enterprises has same day shipment for domestic and International orders. Our RF, microwave and millimeter wave products maintain a 99.4% availability and are part of the broadest selection in the industry.

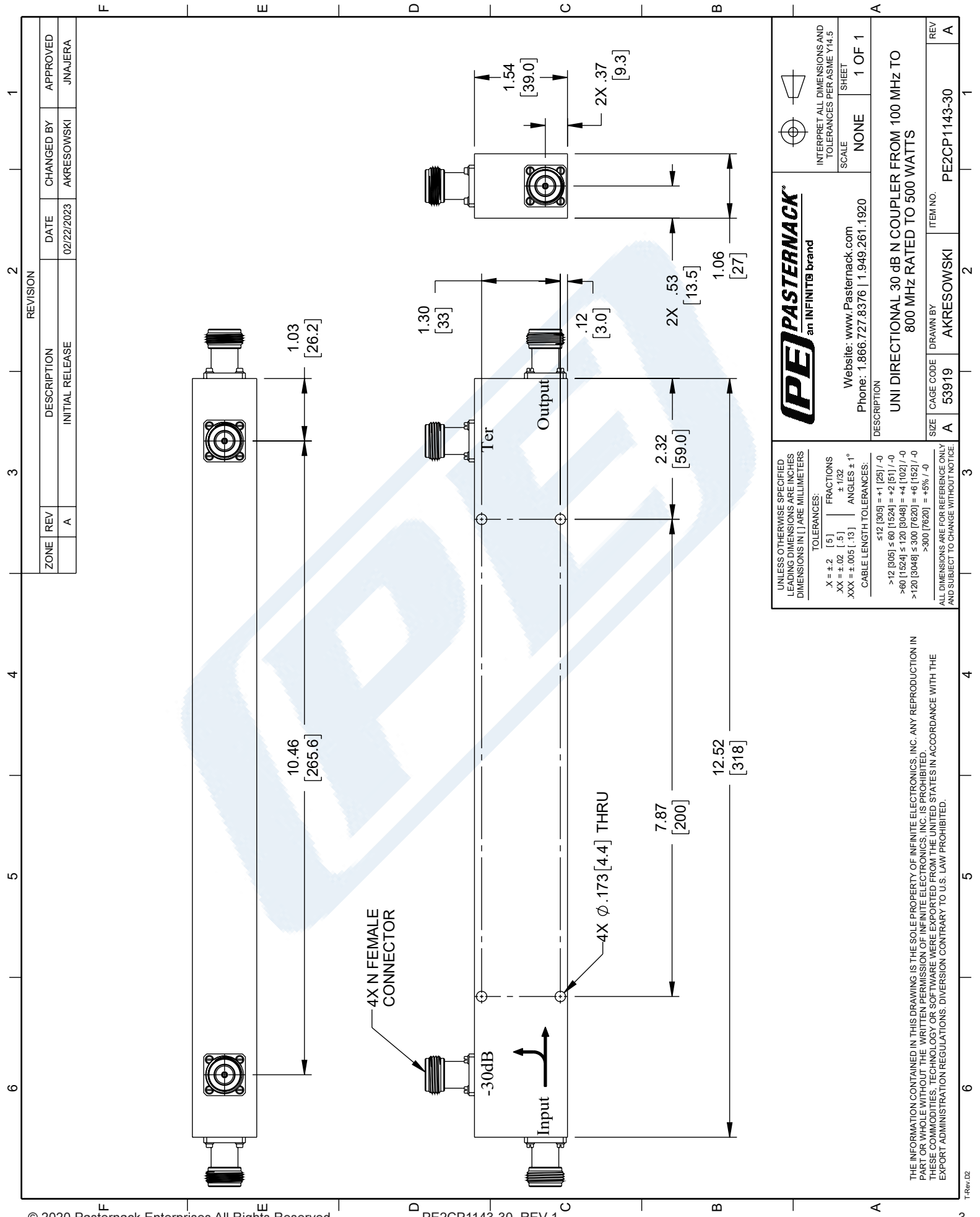
Click the following link (or enter part number in "SEARCH" on website) to obtain additional part information including price, inventory and certifications: [Directional 30 dB N Coupler from 100 MHz to 800 MHz Rated to 500 Watts PE2CP1143-30](#)

URL: <https://www.pasternack.com/directional-30-db-coupler-100-mhz-to-800-mhz-pe2cp1143-30-p.aspx>

The information contained in this document is accurate to the best of our knowledge and representative of the part described herein. It may be necessary to make modifications to the part and/or the documentation of the part, in order to implement improvements. Pasternack reserves the right to make such changes as required. Unless otherwise stated, all specifications are nominal. Pasternack does not make any representation or warranty regarding the suitability of the part described herein for any particular purpose, and Pasternack does not assume any liability arising out of the use of any part or documentation.

PE2CP1143-30 CAD Drawing

Directional 30 dB N Coupler from 100 MHz to 800 MHz Rated to 500 Watts



ZONE	REV	DESCRIPTION	DATE	CHANGED BY	APPROVED
	A	INITIAL RELEASE	02/22/2023	AKRESOWSKI	JNAJERA

REVISION

		INTERPRET ALL DIMENSIONS AND TOLERANCES PER ASME Y14.5 SCALE NONE SHEET 1 OF 1	
Website: www.Pasternack.com Phone: 1.866.727.8376 1.949.261.1920		DESCRIPTION UNI DIRECTIONAL 30 dB N COUPLER FROM 100 MHz TO 800 MHz RATED TO 500 WATTS	
UNLESS OTHERWISE SPECIFIED LEADING DIMENSIONS ARE INCHES DIMENSIONS IN [] ARE MILLIMETERS TOLERANCES: X = ±.2 [5] FRACTIONS ±.02 [.5] ± 1/32 XXX = ±.005 [.13] ANGLES ± 1° CABLE LENGTH TOLERANCES: ≤12 [305] = +1 [25] / -0 >12 [305] ≤ 60 [1524] = +2 [51] / -0 >60 [1524] ≤ 120 [3048] = +4 [102] / -0 >120 [3048] ≤ 300 [7620] = +6 [152] / -0 >300 [7620] = +5% / -0	SIZE A CAGE CODE A 53919 DRAWN BY AKRESOWSKI ITEM NO. PE2CP1143-30	ALL DIMENSIONS ARE FOR REFERENCE ONLY AND SUBJECT TO CHANGE WITHOUT NOTICE	

THE INFORMATION CONTAINED IN THIS DRAWING IS THE SOLE PROPERTY OF INFINITE ELECTRONICS, INC. ANY REPRODUCTION IN PART OR WHOLE WITHOUT THE WRITTEN PERMISSION OF INFINITE ELECTRONICS, INC. IS PROHIBITED. THESE COMMODITIES, TECHNOLOGY OR SOFTWARE WERE EXPORTED FROM THE UNITED STATES IN ACCORDANCE WITH THE EXPORT ADMINISTRATION REGULATIONS. DIVERSION CONTRARY TO U.S. LAW PROHIBITED.