



## 2.15 dBi, UHF Rubber Duck Antenna, 412-480 MHz, SMA Female Connector, Vertical Polarization

### Antennas Technical Data Sheet

**PEANRBD1011**

#### Features

- 412 MHz to 480 MHz, 2.15 dBi Gain
- SMA-Female connector
- Heliflex whip antenna
- Plug and play
- 10W power handling
- VSWR < 3:1
- Vertical polarization

#### Applications

- PtP or PtMP applications
- Trunking for two-way radio comms
- UHF applications
- Public Safety / Emergency services
- Tetra and P-25 applications exclusively supported
- Land and Private mobile radio (LMR) (PMR)
- Fixed and mobile services

#### Description

The PEANRBD1011 rubber duck antenna from Pasternack is part of our extensive line of directional antennas that we offer with global same-day shipping from our facilities certified to ISO 9001:2015. Pasternack's high-quality single-band rubber duck antenna has a 2.15 dBi nominal gain and can be procured with no order limit. This rubber duck single-band 2.15 dBi antenna has a frequency range of 412 MHz to 480 MHz.

We lead the industry in supplying products like this 412 MHz to 480 MHz single-band antenna, along with other RF, microwave, and millimeter wave components. This rubber duck antenna from Pasternack uses a SMA connector and has a maximum input power of 10 watts. Use our single-band rubber duck antenna with vertical polarization for fixed and mobile services, public safety or emergency services, trunking for two-way radio communications, land and private mobile radio (LMR) (PMR), PtP or PtMP, tetra, and P-25 applications.

Pasternack's rubber duck antenna with 2.15 dBi gain has a SMA-type female connector. This SMA-series female connectorized omnidirectional antenna is 0.5 inches tall, 0.5 inches wide, and 6.29 inches long. The PEANRBD1011 UHF antenna has 360-degrees of horizontal and 80-degrees of vertical HPBW.

Pasternack's 50 Ohms impedance antenna can operate at temperatures ranging from -40 °C to 60 °C. This single-band rubber duck antenna is offered with expert technical support, PDF datasheets, and CAD drawings with dimensions and specifications. Order your 2.15 dBi UHF rubber duck antennas now and enjoy our international or domestic same-day shipping.

#### Configuration

Design	Rubber Duck
Band Type	Single
Radiation Pattern	Omni Directional
Polarization	Vertical
Connector Type	SMA Female

#### Electrical Specifications

Description	Minimum	Typical	Maximum	Units
Frequency Range	412		480	MHz
Input VSWR			3:1	
Center Frequency VSWR			1.5:1	
Impedance		50		Ohms

Click the following link (or enter part number in "SEARCH" on website) to obtain additional part information including price, inventory and certifications: [2.15 dBi, UHF Rubber Duck Antenna, 412-480 MHz, SMA Female Connector, Vertical Polarization PEANRBD1011](#)



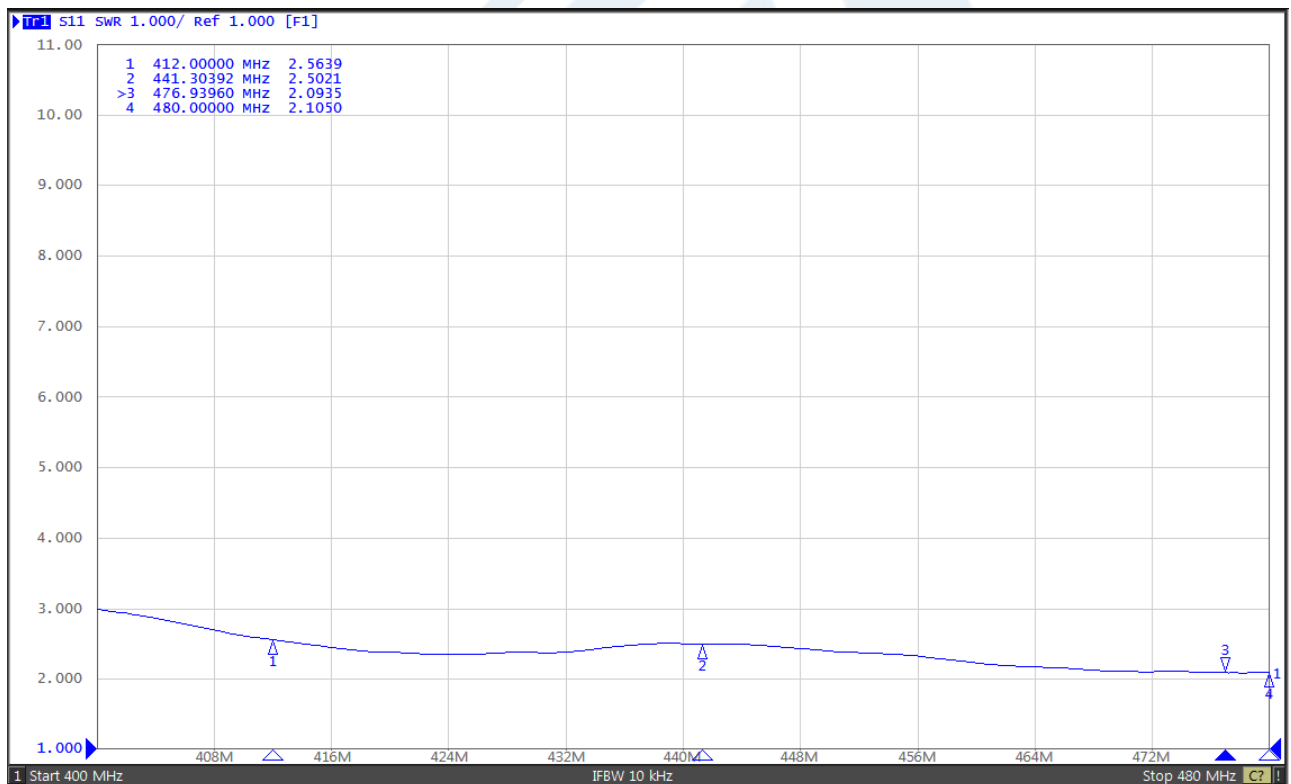
2.15 dBi, UHF Rubber Duck Antenna, 412-480 MHz,  
SMA Female Connector, Vertical Polarization

## Antennas Technical Data Sheet

**PEANRBD1011**

Gain	2.15	dBi
Horizontal (Azimuth) Beam Width	Omnidirectional	
Vertical (Elevation) Beam Width	80	Degrees
Input Power	10	Watts

VSWR plot:



Click the following link (or enter part number in "SEARCH" on website) to obtain additional part information including price, inventory and certifications: [2.15 dBi, UHF Rubber Duck Antenna, 412-480 MHz, SMA Female Connector, Vertical Polarization PEANRBD1011](#)



2.15 dBi, UHF Rubber Duck Antenna, 412-480 MHz,  
SMA Female Connector, Vertical Polarization

## Antennas Technical Data Sheet

**PEANRBD1011**

### Mechanical Specifications

Radome Material

TPEE

#### Size

Overall Length

6.29 in [159.77 mm]

Width

0.5 in [12.7 mm]

Height

0.5 in [12.7 mm]

Weight

0.04 lbs [18.14 g]

### Environmental Specifications

#### Temperature

Operating Range

-40 to +60 deg C

**Compliance Certifications** (see [product page](#) for current document)

### Plotted and Other Data

Notes:

2.15 dBi, UHF Rubber Duck Antenna, 412-480 MHz, SMA Female Connector, Vertical Polarization from Pasternack Enterprises has same day shipment for domestic and International orders. Our RF, microwave and millimeter wave products maintain a 99.4% availability and are part of the broadest selection in the industry.

Click the following link (or enter part number in "SEARCH" on website) to obtain additional part information including price, inventory and certifications: [2.15 dBi, UHF Rubber Duck Antenna, 412-480 MHz, SMA Female Connector, Vertical Polarization PEANRBD1011](#)

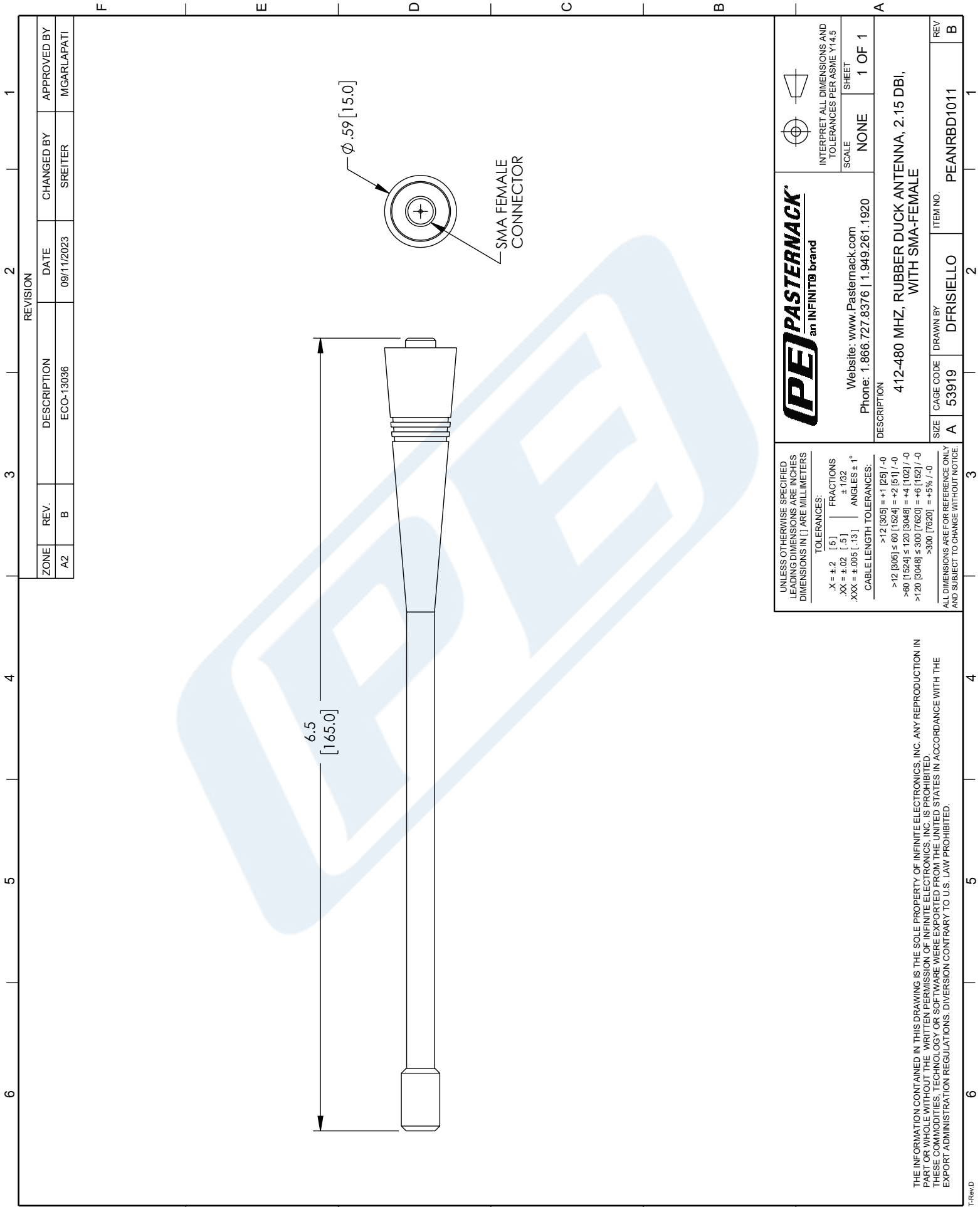
URL: <https://www.pasternack.com/2.15-dbi-uhf-rubber-duck-antenna-412-480-mhz-sma-female-connector-vertical-polarization-peanrbd1011-p.aspx>

The information contained in this document is accurate to the best of our knowledge and representative of the part described herein. It may be necessary to make modifications to the part and/or the documentation of the part, in order to implement improvements. Pasternack reserves the right to make such changes as required. Unless otherwise stated, all specifications are nominal. Pasternack does not make any representation or warranty regarding the suitability of the part described herein for any particular purpose, and Pasternack does not assume any liability arising out of the use of any part or documentation.

# PEANRBD1011 CAD Drawing

2.15 dBi, UHF Rubber Duck Antenna, 412-480 MHz, SMA

Female Connector, Vertical Polarization



THE INFORMATION CONTAINED IN THIS DRAWING IS THE SOLE PROPERTY OF INFINITE ELECTRONICS, INC. ANY REPRODUCTION IN PART OR WHOLE WITHOUT THE WRITTEN PERMISSION OF INFINITE ELECTRONICS, INC. IS PROHIBITED. THESE COMMODITIES, TECHNOLOGY OR SOFTWARE WERE EXPORTED FROM THE UNITED STATES IN ACCORDANCE WITH THE EXPORT ADMINISTRATION REGULATIONS. DIVERSION CONTRARY TO U.S. LAW PROHIBITED.

UNLESS OTHERWISE SPECIFIED  
LEADING DIMENSIONS ARE INCHES  
DIMENSIONS IN [ ] ARE MILLIMETERS

TOLERANCES:

X = ±.2	[.5]	FRACTIONS
.XX = ±.02	[.13]	±.102
.XXX = ±.005	[.13]	ANGLES ± 1°

CABLE LENGTH TOLERANCES:

>12 [305]	= +1 [25] / -0
>12 [305] ≤ 60 [1524]	= +2 [51] / -0
>60 [1524] ≤ 120 [3048]	= +4 [102] / -0
>120 [3048] ≤ 300 [7620]	= +6 [152] / -0
>300 [7620]	= +5% / -0

ALL DIMENSIONS ARE FOR REFERENCE ONLY  
AND SUBJECT TO CHANGE WITHOUT NOTICE.

Website: <a href="http://www.Pasternack.com">www.Pasternack.com</a> Phone: 1.866.727.8376   1.949.261.1920		INTERPRET ALL DIMENSIONS AND TOLERANCES PER ASME Y14.5 SCALE: NONE SHEET: 1 OF 1	
DESCRIPTION 412-480 MHZ, RUBBER DUCK ANTENNA, 2.15 DBI, WITH SMA-FEMALE			
SIZE	CAGE CODE	DRAWN BY	ITEM NO.
A	53919	DFRISIELLO	PEANRBD1011
			REV B