



2400-2500, 5150-7125 MHz Wi-Fi 6E Omni MIMO
 Antenna, 6 dBi Gain, 8 N Type Female Connectors

Antennas Technical Data Sheet

PEANOM1064

Features

- N Type Female Connector
- 8 x Vertical Polarization
- 8x8 MIMO Functionality
- Outdoor Rated Omnidirectional Antenna
- 2.4 GHz, 5 GHz, 6 GHz Wi-Fi Bands
- 6 dBi gain

Applications

- Infotainment systems, Routers, Wi-Fi hotspots, HD video transmission, Gateways, Dash cameras, Public transportation
- Connected cars or self-driving cars, Fleet management, Logistics
- Public Safety Networks
- Zigbee, Bluetooth, Wi-Fi

Description

The PEANOM1064 Wi-Fi 6e Omni Antenna from Pasternack's is a high performance omnidirectional antenna designed for the 2400 MHz to 7125 MHz bands and is available to ship same day. It is a UV protected, outdoor rated antenna with omnidirectional pattern. The PEANOM1064 is ideally suited for 802.11 protocols including 802.11ax as well as Zigbee, Bluetooth and is 8x8 MIMO capable.

The Pasternack's high performance omni PEANOM1064 is a rugged antenna providing broad coverage, low latency, increased network capacity and 6 dBi gain. This 8 port N Female omnidirectional antenna is suitable for commercial radios and access points in public and private networks that are equipped with N Type connectors.

This Wi-Fi 6e PEANOM1064 omni antenna with 8 N Female connectors, as well as our wide selection of superior quality RF parts, ships same day. Contact our knowledgeable and friendly technical support and sales staff for your answers on antennas or other Pasternack's products.

Configuration

| | |
|-------------------|------------------|
| Design | Omni |
| Application Band | Wi-Fi 6E |
| Band Type | Dual |
| Radiation Pattern | Omni Directional |
| Polarization | Vertical |
| Cable Type | RG58/U |
| Cable Length | 36 in [914.4 mm] |
| Connector Type | N Female |
| Number of Ports | 8 |

Electrical Specifications

| Description | Minimum | Typical | Maximum | Units |
|-----------------|---------|---------|---------|-------|
| Frequency Range | 2,400 | | 7,125 | MHz |
| Input VSWR | | | 2:1 | |
| Impedance | | 50 | | Ohms |
| Input Power | | | 50 | Watts |

Click the following link (or enter part number in "SEARCH" on website) to obtain additional part information including price, inventory and certifications: [2400-2500, 5150-7125 MHz Wi-Fi 6E Omni MIMO Antenna, 6 dBi Gain, 8 N Type Female Connectors PEANOM1064](#)



2400-2500, 5150-7125 MHz Wi-Fi 6E Omni MIMO
 Antenna, 6 dBi Gain, 8 N Type Female Connectors

Antennas Technical Data Sheet

PEANOM1064

Specifications by Band

| Description | Band 1 | Band 2 | Band 3 | Band 4 | Band 5 | Units |
|-----------------------|------------|---------------|--------|--------|--------|---------|
| Range | 2.4 to 2.5 | 5.15 to 7.125 | | | | GHz |
| Gain | 6 | 6 | | | | dBi |
| Horizontal Beam Width | 360 | 360 | | | | Degrees |
| Vertical Beam Width | 45 | 30 | | | | Degrees |

Mechanical Specifications

| | |
|-----------------|--------------------|
| Radome Material | UV Resistant ABS |
| Size | |
| Overall Length | 6.7 in [170.18 mm] |
| Width | 5.8 in [147.32 mm] |
| Height | 5.8 in [147.32 mm] |
| Weight | 3.5 lbs [1.59 kg] |
| Color | White |

Environmental Specifications

| | |
|--------------------|----------------------|
| Temperature | |
| Operating Range | -40 to +70 deg C |
| Wind Loading | 124 MPH [199.56 KPH] |
| Humidity | 5 to 95 |
| Ingress Protection | IP54 |

Compliance Certifications (see [product page](#) for current document)

Plotted and Other Data

Notes:

Click the following link (or enter part number in "SEARCH" on website) to obtain additional part information including price, inventory and certifications: [2400-2500, 5150-7125 MHz Wi-Fi 6E Omni MIMO Antenna, 6 dBi Gain, 8 N Type Female Connectors PEANOM1064](#)



2400-2500, 5150-7125 MHz Wi-Fi 6E Omni MIMO
Antenna, 6 dBi Gain, 8 N Type Female Connectors

Antennas Technical Data Sheet

PEANOM1064

2400-2500, 5150-7125 MHz Wi-Fi 6E Omni MIMO Antenna, 6 dBi Gain, 8 N Type Female Connectors from Pasternack Enterprises has same day shipment for domestic and International orders. Our RF, microwave and millimeter wave products maintain a 99.4% availability and are part of the broadest selection in the industry.

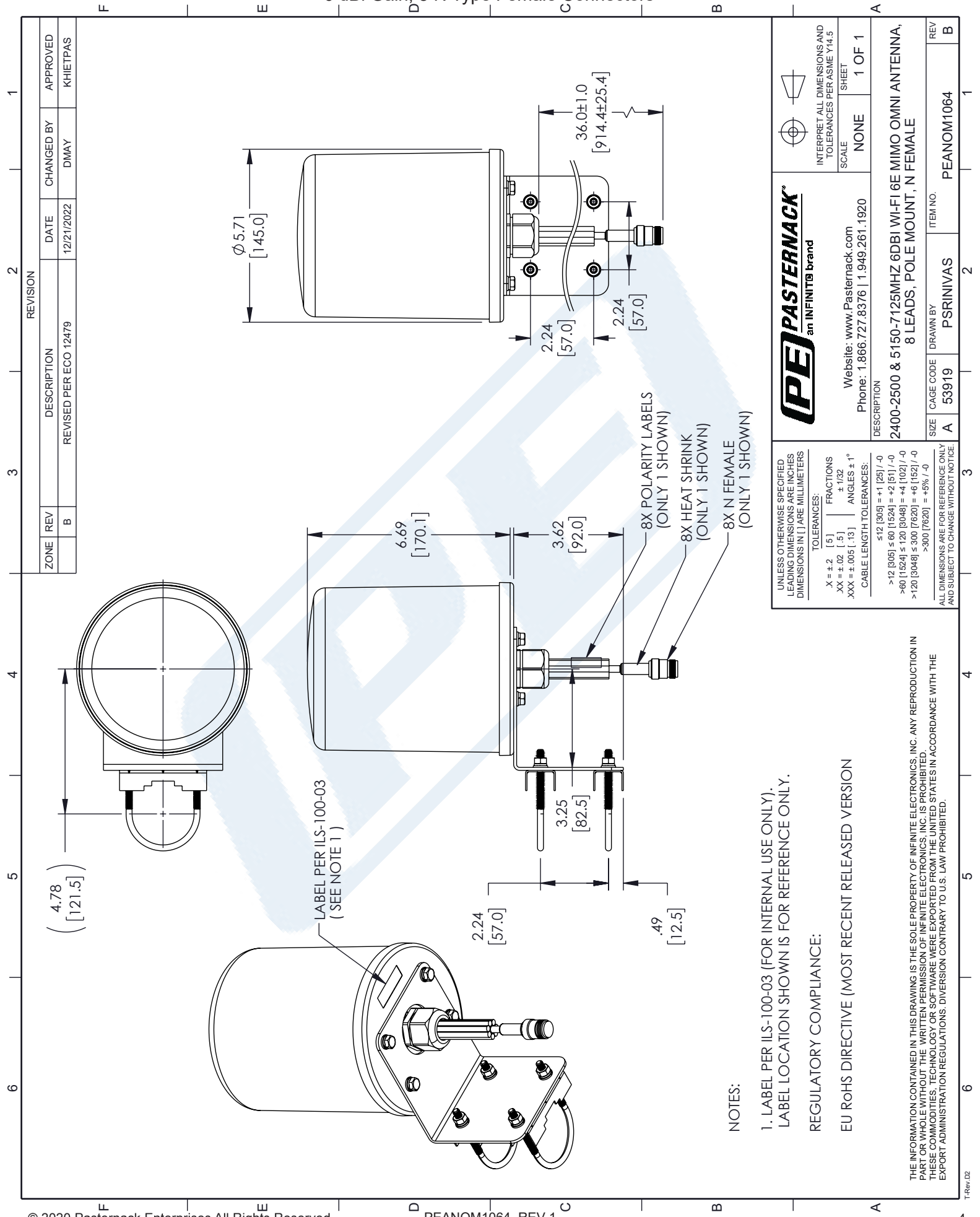
Click the following link (or enter part number in "SEARCH" on website) to obtain additional part information including price, inventory and certifications: [2400-2500, 5150-7125 MHz Wi-Fi 6E Omni MIMO Antenna, 6 dBi Gain, 8 N Type Female Connectors PEANOM1064](https://www.pasternack.com/2400-2500-5150-7125-mhz-wf-fi-6e-omni-mimo-antenna-6-dbi-gain-8-n-type-female-connectors-peanom1064)

URL: <https://www.pasternack.com/2400-2500-5150-7125-mhz-wf-fi-6e-omni-mimo-antenna-6-dbi-gain-8-n-type-female-connectors-peanom1064-p.aspx>

The information contained in this document is accurate to the best of our knowledge and representative of the part described herein. It may be necessary to make modifications to the part and/or the documentation of the part, in order to implement improvements. Pasternack reserves the right to make such changes as required. Unless otherwise stated, all specifications are nominal. Pasternack does not make any representation or warranty regarding the suitability of the part described herein for any particular purpose, and Pasternack does not assume any liability arising out of the use of any part or documentation.

PEANOM1064 CAD Drawing

2400-2500, 5150-7125 MHz Wi-Fi 6E Omni MIMO Antenna,
6 dBi Gain, 8 N Type Female Connectors



NOTES:

- LABEL PER ILS-100-03 (FOR INTERNAL USE ONLY). LABEL LOCATION SHOWN IS FOR REFERENCE ONLY.

REGULATORY COMPLIANCE:

EU ROHS DIRECTIVE (MOST RECENT RELEASED VERSION)

THE INFORMATION CONTAINED IN THIS DRAWING IS THE SOLE PROPERTY OF INFINITE ELECTRONICS, INC. ANY REPRODUCTION IN PART OR WHOLE WITHOUT THE WRITTEN PERMISSION OF INFINITE ELECTRONICS, INC. IS PROHIBITED. THESE COMMODITIES, TECHNOLOGY OR SOFTWARE WERE EXPORTED FROM THE UNITED STATES IN ACCORDANCE WITH THE EXPORT ADMINISTRATION REGULATIONS. DIVERSION CONTRARY TO U.S. LAW PROHIBITED.

| | | | |
|--|-------------------------|--|-----------------------------|
| <p>PASTERNAK an INFINITIB brand</p> | | <p>INTERPRET ALL DIMENSIONS AND TOLERANCES PER ASME Y14.5</p> <p>SCALE: NONE</p> <p>SHEET: 1 OF 1</p> | |
| <p>Website: www.Pasternack.com</p> <p>Phone: 1.866.727.8376 1.949.261.1920</p> | | <p>DESCRIPTION</p> <p>2400-2500 & 5150-7125MHZ 6DBI WI-FI 6E MIMO OMNI ANTENNA, 8 LEADS, POLE MOUNT, N FEMALE</p> | |
| <p>SIZE: A</p> | <p>CAGE CODE: 53919</p> | <p>DRAWN BY: PSRINIVAS</p> | <p>ITEM NO.: PEANOM1064</p> |
| <p>UNLESS OTHERWISE SPECIFIED LEADING DIMENSIONS ARE INCHES DIMENSIONS IN [] ARE MILLIMETERS</p> <p>TOLERANCES:</p> <p>X = ±.2 [5] FRACTIONS ±.02 [.5] ±.1/32 ANGLES ± 1°</p> <p>CABLE LENGTH TOLERANCES:</p> <p>≤12 [305] = +1 [25] / -0</p> <p>>12 [305] ≤60 [1524] = +2 [51] / -0</p> <p>>60 [1524] ≤120 [3048] = +4 [102] / -0</p> <p>>120 [3048] ≤300 [7620] = +6 [152] / -0</p> <p>>300 [7620] = +5% / -0</p> <p>ALL DIMENSIONS ARE FOR REFERENCE ONLY AND SUBJECT TO CHANGE WITHOUT NOTICE</p> | | | |