



698-4200, 10-11 dBi gain, Log Periodic, Type N Female, Low PIM

Antennas Technical Data Sheet

PEANLP1012

Features

- Frequency coverage for 698 MHz to 4200 MHz
- Very High Gain 11 dBi Low PIM Directional Antenna
- Each connector covers wide band of frequencies
- Easy Install universal mounting bracket provided
- Weatherproof ABS – UV Resistance PVC radome
- Pigtail - 8 inches
- N-Type Female connector

Applications

- Point-to-point, LPWAN, LoRA, LTE-M, NB-IoT, IoT, CBRS, M2M applications
- 5G / 4G LTE B1 to B10, B12 to B20, B23, B22, B24, B25, B28 / 3G / GSM / AWS / WLAN/ CBRS operation supported
- 5G Bands supported
- DAS (Distributed Antenna Systems)
- IEEE 802.11a / b / g / n / ac / ad / ah/ ax Wi-Fi applications
- Public safety, utilities, CCTV and local radio coverage
- Smart cities expansion for coverage and IOT / IIOT

Description

Pasternack's PEANLP1012 high gain log periodic antenna is designed to operate from 698 to 4200 MHz. With 11 dBi of gain, PEANLP1012 is ideal for boosting 5G, LTE, CMDA, LoRA, IoT, WIFI. The Pasternack log periodic PEANLP1012 can be used for long distance directional communication over a wide range of frequencies.

Log periodic antennas from Pasternack function as boosters where the existing cellular signal is weak and needs to reach further distances. The PEANLP1012 has Vertical polarization, 65 horizontal beamwidth, and 50 vertical beamwidth for point to point communication. The included mounting brackets allow for either vertical or horizontal mounting configurations. The directional PEANLP1012 antenna has 1 Type N Female connector on a 8 inches long pigtail.

The 11 dBi max gain log periodic PEANLP1012 antenna operates in 5G bands n1, n2, n3, n5, n7, n8, n12, n13, n14, n18, n20, n25, n26, n28, n29, n30, n34, n38, n39, n40, n41, n48, n53, n65, n66, n67, n67, n70, n71, n77, n78, n80, n81, n82, n83, n84, n85, n86, n89, n90, n91, n92, n93, n94, n95, n97, n98. This 698 to 4200 MHz 5G directional log periodic antenna with Type N connector is in stock and ready to ship the same day. Contact Pasternack's knowledgeable and friendly technical support and sales staff for your answers on antennas or other products.

Configuration

Design	Log Periodic
Band Type	Multi
Radiation Pattern	Directional
Polarization	Vertical
Cable Type	RG58U
Cable Length	7.87 in [199.9 mm]
Connector Type	N Female
Number of Ports	2

Electrical Specifications

Description	Minimum	Typical	Maximum	Units
Frequency Range	698		4,200	MHz
Input VSWR		1.7:1	2:1	
Impedance		50		Ohms
Gain	10		11	dBi

Click the following link (or enter part number in "SEARCH" on website) to obtain additional part information including price, inventory and certifications: [698-4200, 10-11 dBi gain, Log Periodic, Type N Female, Low PIM PEANLP1012](#)



698-4200, 10-11 dBi gain, Log Periodic, Type N Female, Low PIM

Antennas Technical Data Sheet

PEANLP1012

Horizontal Beam Width	50	65	Degrees
Vertical Beam Width	45	50	Degrees
Input Power		100	Watts

Specifications by Band

Description	Band 1	Band 2	Band 3	Band 4	Band 5	Units
Range	0.698 to 0.96	1.71 to 2.7	3.3 to 4.2			GHz
Gain	10	11	11			dBi
Horizontal Beam Width	65	50	50			Degrees
Vertical Beam Width	50	45	45			Degrees
VSWR Max	2:1	1.7:1	2:1			
Maximum Input Power	100	100	100			Watts

Mechanical Specifications

Radome Material

ABS

Size

Overall Length

16.14 in [409.96 mm]

Width

8.26 in [209.8 mm]

Height

2.51 in [63.75 mm]

Weight

1.85 lbs [839.15 g]

Environmental Specifications

Temperature

Operating Range

-40 to +60 deg C

Wind Loading

150 MPH [241.4 KPH]

Compliance Certifications (see [product page](#) for current document)

Plotted and Other Data

Notes:

Click the following link (or enter part number in "SEARCH" on website) to obtain additional part information including price, inventory and certifications: [698-4200, 10-11 dBi gain, Log Periodic, Type N Female, Low PIM PEANLP1012](#)



698-4200, 10-11 dBi gain, Log Periodic, Type N Female, Low PIM

Antennas Technical Data Sheet

PEANLP1012

698-4200, 10-11 dBi gain, Log Periodic, Type N Female, Low PIM from Pasternack Enterprises has same day shipment for domestic and International orders. Our RF, microwave and millimeter wave products maintain a 99.4% availability and are part of the broadest selection in the industry.

Click the following link (or enter part number in "SEARCH" on website) to obtain additional part information including price, inventory and certifications: [698-4200, 10-11 dBi gain, Log Periodic, Type N Female, Low PIM PEANLP1012](https://www.pasternack.com/multi-antenna-698-mhz-4.2-ghz-0-dbi-gain-n-peanlp1012-p.aspx)

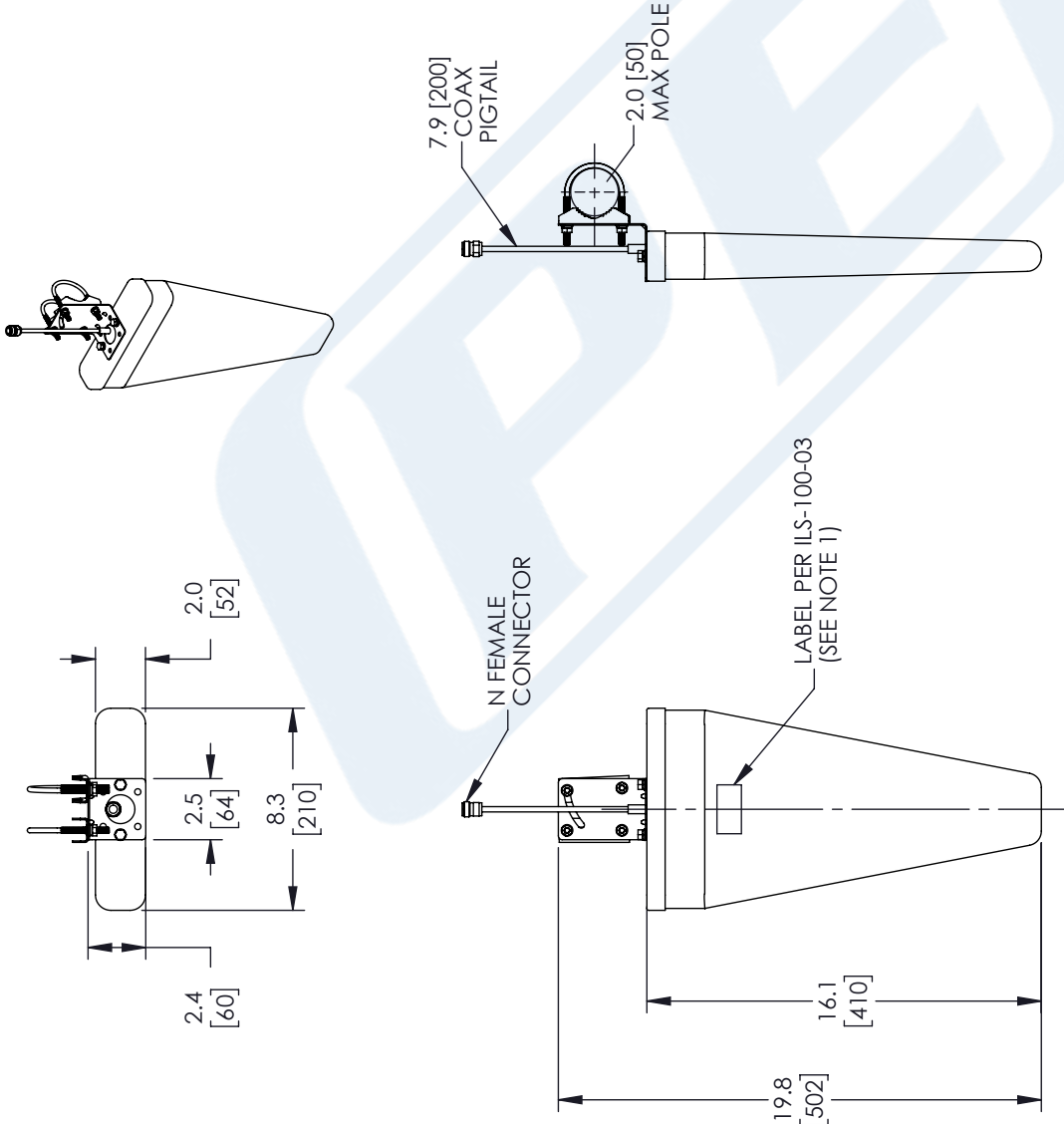
URL: <https://www.pasternack.com/multi-antenna-698-mhz-4.2-ghz-0-dbi-gain-n-peanlp1012-p.aspx>

The information contained in this document is accurate to the best of our knowledge and representative of the part described herein. It may be necessary to make modifications to the part and/or the documentation of the part, in order to implement improvements. Pasternack reserves the right to make such changes as required. Unless otherwise stated, all specifications are nominal. Pasternack does not make any representation or warranty regarding the suitability of the part described herein for any particular purpose, and Pasternack does not assume any liability arising out of the use of any part or documentation.

PEANLP1012 CAD Drawing

698-4200, 10-11 dBi gain, Log Periodic, Type N Female, Low PIM

REVISIONS			
REV.	DESCRIPTION	DATE	APPROVED
A	INITIAL RELEASE	03/31/2022	KHIETPAS



NOTES:

1. LABEL PER ILS-100-03 (FOR INTERNAL REFERENCE ONLY)
LABEL LOCATION FOR REFERENCE ONLY.

THESE COMMODITIES, TECHNOLOGY OR SOFTWARE WERE EXPORTED FROM THE UNITED STATES IN ACCORDANCE WITH THE EXPORT ADMINISTRATION REGULATIONS. DIVERSION CONTRARY TO U.S. LAW PROHIBITED.

UNLESS OTHERWISE SPECIFIED
LEADING DIMENSIONS ARE INCHES
DIMENSIONS IN [] ARE MILLIMETERS

TOLERANCES:

X = ± 2 [508] FRACTIONS

.XX = ± 0.02 [.51] ± 1/32

.XXX = ± 0.005 [.13] ANGLES ± 1°

CABLE LENGTH (L) TOLERANCES:

L ≤ 12 [305] = +1 [25] / -0

12 [305] < L ≤ 60 [1524] = +2 [51] / -0

60 [1524] < L ≤ 120 [3048] = +4 [102] / -0

120 [3048] < L ≤ 300 [7620] = +6 [152] / -0

300 [7620] < L = +5% / -0

ALL DIMENSIONS SHOWN
ARE FOR REFERENCE ONLY.



Pasternack Enterprises, Inc.
P.O. Box 16759, Irvine, CA 92623.
Phone: 1.949.261.1920 | 1.866.727.8376
Fax: 1.949.261.7451

Website: www.pasternack.com
E-mail: sales@pasternack.com

SIZE A CAGE CODE 53919 DRAWN BY K.GLEBOVA ITEM NO. PEANLP1012 REV A



THE INFORMATION AND
DESIGN IN THIS DOCUMENT
IS THE PROPERTY OF
PASTERNAK CORPORATION
ALL RIGHTS RESERVED.

SHEET 1 OF 1

SCALE N/A

REV A