

# Product Specification



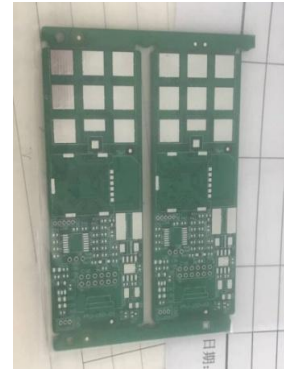
## Patch Antenna JLTD1575-1602S25N4G

### Feature

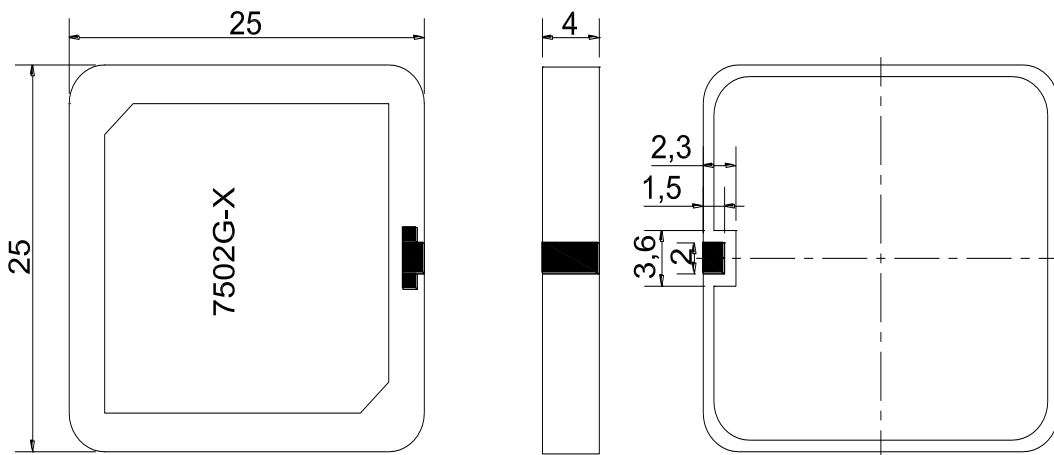
- High gain , Compact
- Pin type
- Customization available

### Electrical Specification

Center Frequency	1575.42 MHz	1602 MHz
Return Loss @ F0	$\geq 10\text{dB}$	
Polarization	RHCP	
Gain @ Zenith	-	
Ground plane	配机	
Impedance	50 $\Omega$	
Frequency Temperature Coefficient	$\pm 20\text{ ppm}/^\circ\text{C}$	
Operation Temperature Range	$-40 \sim +85^\circ\text{C}$	



### Mechanical Drawing



The last "X" is the serial number of month

Tolerance:  $\pm 0.3$   
Unit: mm

# Product Specification



**Patch Antenna**   
**JLTD1575-1602S25N4G**

## Test Fixture

## Characteristics