

698 to 2700 MHz Omni Antenna 6.5 dBi Gain, 5.5 mm Spring SMA Male Connector, Black Fiberglass Radome

Fairview Microwave's FMANOM1075 is a vertical polarized antenna that ships same day from our ISO 9001:2015 certified facility. This omni directional antenna has SMA male connectors. The FMANOM1075 is a single band antenna operating from 698 to 2700 MHz with 6.5 dBi gain.

Fairview Microwave's antenna with 698 to 2700 MHz frequency range has a maximum input VSWR of 1.5:1. The FMANOM1075 antenna has a black radome made of fiberglass, an overall length of 29.53 in, width of 2 in, and weighs 2.42 lbs.

Use our on-line ordering system to purchase your FMANOM1075 antenna 24 hours a day with same-day shipping and no MOQs (minimum order quantities).

Configuration

Gain	6.5
Polarization	Vertical
Connector Type	SMA Male

Electrical Specifications

Description	Min	Typ	Max	Units
Frequency Range	698		2,700	MHz
Input VSWR			1.5:1	
Impedance		50		Ohms
Gain		6.5		dBi
Input Power			100	Watts

Mechanical Specifications

Radome Material	Fiberglass
Size	
Length	29.53 in [750.06 mm]
Width	2 in [50.8 mm]
Height	2 in [50.8 mm]
Weight	2.42 lbs [1.1 kg]

Environmental Specifications

Temperature	
Operating Range	-40 to +80 deg C

Compliance Certifications (see [product page](#) for current document)

Plotted and Other Data

Notes:



Features:

- Heavy Duty 5.5mm Spring Diameter
- Vertically Polarized
- 6.5 dBi Gain
- SMA Male Connector
- 14.75 ft RG58 Cable
- Black Fiberglass Radome

Applications:

- Offroad/Overland Vehicles
- Mining/Industrial Heavy Equipment
- Commercial Trucking
- Fleet Management
- Farm Equipment

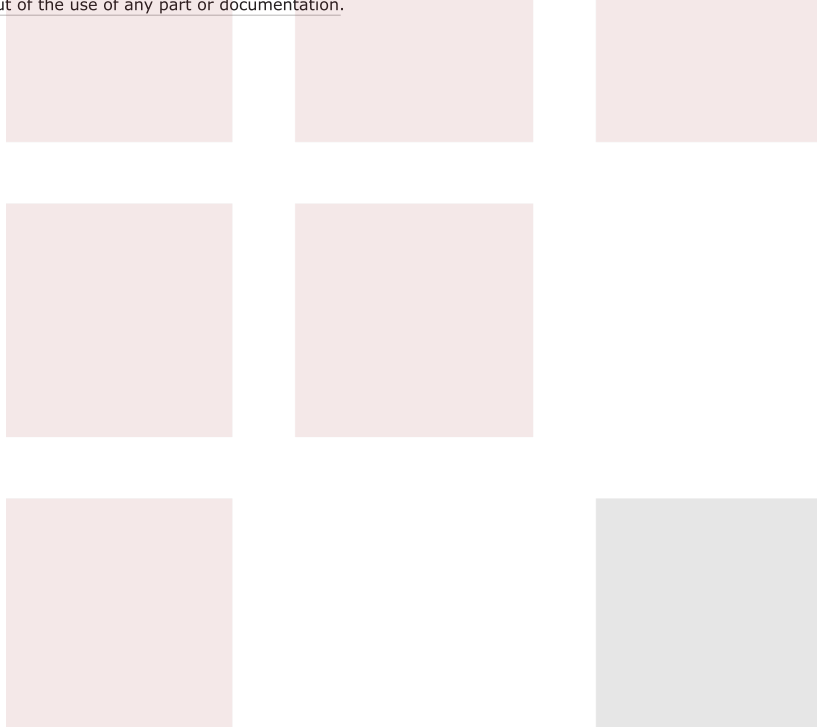
Fairview Microwave
301 Leora Ln., Suite 100
Lewisville, TX 75056
Tel: 1-800-715-4396 / (972) 649-6678
Fax: (972) 649-6689
www.fairviewmicrowave.com
sales@fairviewmicrowave.com

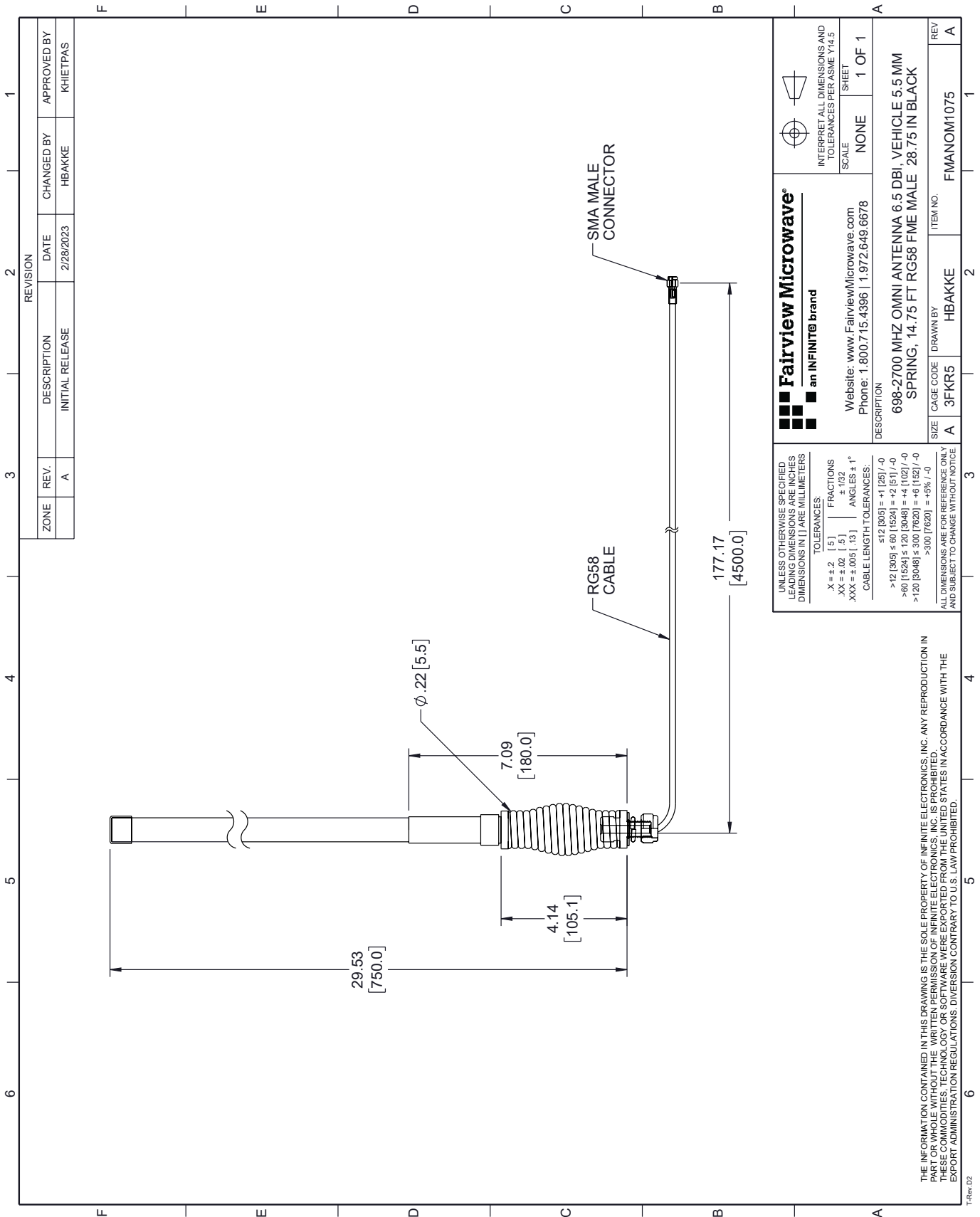
698 to 2700 MHz Omni Antenna 6.5 dBi Gain, 5.5 mm Spring SMA Male Connector, Black Fiberglass Radome from Fairview Microwave is in-stock and available to ship same-day. All of our RF/microwave products are available off-the-shelf from our ISO 9001:2008 certified facilities in Lewisville, Texas. Fairview Microwave is RF on-demand.

For additional information on this product, please click the following link: [698 to 2700 MHz Omni Antenna 6.5 dBi Gain, 5.5 mm Spring SMA Male Connector, Black Fiberglass Radome FMANOM1075](#)

URL: <https://www.fairviewmicrowave.com/698-to-2700-mhz-omni-antenna-6.5-dbi-gain-5.5-mm-spring-sma-male-connector-black-fiberglass-radome-fmanom1075-p.aspx>

The information contained in this document is accurate to the best of our knowledge and representative of the part described herein. It may be necessary to make modifications to the part and/or the documentation of the part, in order to implement improvements. Fairview Microwave reserves the right to make such changes as required. Unless otherwise stated, all specifications are nominal. Fairview Microwave does not make any representation or warranty regarding the suitability of the part described herein for any particular purpose, and Fairview Microwave does not assume any liability arising out of the use of any part or documentation.





REVISION		DATE	CHANGED BY	APPROVED BY
ZONE	REV.	DESCRIPTION	INITIAL RELEASE	
	A			KHIETPAS

Fairview Microwave an INFINIT [®] brand		INTERPRET ALL DIMENSIONS AND TOLERANCES PER ASME Y14.5 SCALE: NONE SHEET: 1 OF 1
Website: www.FairviewMicrowave.com Phone: 1.800.715.4396 1.972.649.6678		DESCRIPTION: 698-2700 MHZ OMNI ANTENNA 6.5 DBI, VEHICLE 5.5 MM SPRING, 14.75 FT RG58 FME MALE 28.75 IN BLACK
SIZE: A	CAGE CODE: 3FKR5	ITEM NO.: FMANOM1075
DRAWN BY: HBAKKE		REV: A

UNLESS OTHERWISE SPECIFIED, LEADING DIMENSIONS ARE IN INCHES DIMENSIONS IN [] ARE MILLIMETERS

TOLERANCES:

.X = ± .2 [5] FRACTIONS ± 1/32
 .XX = ± .02 [.5] ANGLES ± 1°
 .XXX = ± .005 [.13]

CABLE LENGTH TOLERANCES:

≤ 12 [305] = ± 1 [25] / -0
 > 12 [305] ≤ 60 [1524] = +2 [51] / -0
 > 60 [1524] ≤ 120 [3048] = +4 [102] / -0
 > 120 [3048] ≤ 300 [7620] = +6 [152] / -0
 > 300 [7620] = +5% / -0

ALL DIMENSIONS ARE FOR REFERENCE ONLY AND SUBJECT TO CHANGE WITHOUT NOTICE

THE INFORMATION CONTAINED IN THIS DRAWING IS THE SOLE PROPERTY OF INFINITE ELECTRONICS, INC. ANY REPRODUCTION IN PART OR WHOLE WITHOUT THE WRITTEN PERMISSION OF INFINITE ELECTRONICS, INC. IS PROHIBITED. THESE COMMODITIES, TECHNOLOGY OR SOFTWARE WERE EXPORTED FROM THE UNITED STATES IN ACCORDANCE WITH THE EXPORT ADMINISTRATION REGULATIONS. DIVERSION CONTRARY TO U.S. LAW PROHIBITED.