



40 dB Gain, 13 Watt P1dB, 800 MHz to 2.5 GHz, High Power Amplifier, SMA, 50 dBm IP3, Class A

TECHNICAL DATA SHEET

PE15A5020

PE15A5020 is a wideband GaAs amplifier module that is ideal for wideband communications, pulsed applications including radar, and medical and laboratory applications. It produces 3 Watts of linear, 10 MHz LTE. The high gain power coaxial amplifier operating in the 0.8 to 2.5 GHz frequency range. The amplifier offers 40 dB typical small signal gain with the gain flatness of ± 2 dB typical. The amplifier has several protection circuits including load VSWR protection, low and high bias protection, reverse bias protection and thermal protection. The connectorized SMA module is unconditionally stable and includes built-in voltage regulation, bias sequencing, and requires typically a +12V DC power supply. The amplifier operates over the temperature range of -40°C and $+85^{\circ}\text{C}$ and provides an RF Sample Port Output.

Features

- 0.8 GHz to 2.5 GHz Frequency Range
- P1dB 41 dBm typ
- Small Signal Gain: 40 dB typ
- Gain Flatness: ± 2 typ
- 50 Ohms Input and Output Matched
- Unconditionally Stable
- Regulated Supply & Bias Sequencing
- Overvoltage Protection
- Thermal Protection
- RF Sample Port

Applications

- L-band Military Radar
- Commercial Air Traffic Control
- Weather & Earth Observation Satellites
- Radar & Communication Systems
- High Gain Driver Power Amplifier
- High Gain Output Power Amplifier

Electrical Specifications (TA = $+25^{\circ}\text{C}$, DC Voltage = 12Volts)

Description	Minimum	Typical	Maximum	Units
Frequency Range	0.8		2.5	GHz
Small Signal Gain	38	40		dB
Gain Flatness		± 2		dB
Output Power at 1 dB Compression Point	+39	+41		dBm
RF Sample Port	+29	+30	+31	dB
Output 3rd Order Intercept Point		+50		dBm
Impedance (Input)		50		Ohms
Impedance (Output)		50		Ohms
Input Return Loss	-12	-14		dB
Rise/Fall Time		<1		usec
Operating DC Voltage	11	12	13	Volts
Standby DC Current		400		mA
Quiescent Current		5.5		A
Operating Temperature Range	-40		+85	$^{\circ}\text{C}$

Click the following link (or enter part number in "SEARCH" on website) to obtain additional part information including price, inventory and certifications: [40 dB Gain, 13 Watt P1dB, 800 MHz to 2.5 GHz, High Power Amplifier, SMA, 50 dBm IP3, Class A PE15A5020](#)



40 dB Gain, 13 Watt P1dB, 800 MHz to 2.5 GHz, High Power Amplifier, SMA, 50 dBm IP3, Class A

TECHNICAL DATA SHEET

PE15A5020

Protections

ENVIRONMENTAL / PROTECTIONS			
PARAMETER	MIN	MAX	UNIT
Operating Temp. (Housing Temp.)	-40	+85	°C
Storage Temp Range	-60	+100	°C
Humidity Range	0-100		%
Altitude	0-30,000		ft.
Shock / Vibration	MIL-STD-810 and equivalents		--
Max RF Input	+3		dBm
Load VSWR @ P1dB	Open / Short Output Protection		--
PA Baseplate Shutoff Temperature	+ 90		°C

Mechanical Specifications

Size

Length 6 in [152.4 mm]
 Width 3.5 in [88.9 mm]
 Height 0.69 in [17.53 mm]

Input Connector SMA Female
 Output Connector SMA Female
 Cooling HEATSINK REQUIRED use PE15C5013 OR PE15C5013F

Environmental Specifications

Temperature

Operating Range -40 to +85 deg C
 Storage Range -60 to +100 deg C

Humidity 100
 Shock MIL-STD-810
 Vibration MIL-STD-810

Click the following link (or enter part number in "SEARCH" on website) to obtain additional part information including price, inventory and certifications: [40 dB Gain, 13 Watt P1dB, 800 MHz to 2.5 GHz, High Power Amplifier, SMA, 50 dBm IP3, Class A PE15A5020](#)



40 dB Gain, 13 Watt P1dB, 800 MHz to 2.5 GHz, High Power Amplifier, SMA, 50 dBm IP3, Class A

TECHNICAL DATA SHEET

PE15A5020

Compliance Certifications (see [product page](#) for current document)

Plotted and Other Data

Notes:

- Values at +25 °C, sea level
- ESD Sensitive Material, Transport material in Approved ESD bags. Handle only in approved ESD Workstation.
- Heat Sink Required for Proper Operation, Unit is cooled by conduction to heat sink.



Click the following link (or enter part number in "SEARCH" on website) to obtain additional part information including price, inventory and certifications: [40 dB Gain, 13 Watt P1dB, 800 MHz to 2.5 GHz, High Power Amplifier, SMA, 50 dBm IP3, Class A PE15A5020](#)



40 dB Gain, 13 Watt P1dB, 800 MHz to 2.5 GHz, High Power Amplifier, SMA, 50 dBm IP3, Class A

TECHNICAL DATA SHEET

PE15A5020

Amplifier Power-up Precautions

- 1.) Confirm that proper ESD precautions and controls are always in place before handling any Amplifier module.
- 2.) Confirm adequate thermal management is in place to effectively dissipate heat away from the Amplifier package. The Amplifier operational baseplate temperature must be within the operational temperature range stated in the Amplifier datasheet. Depending on the design and thermal requirements, using a heatsink with cooling fan is always recommended for safe reliable operation. A heat sink without a cooling fan may also be used. Damage caused from overheating will void the warranty.
- 3.) Confirm adequate system grounding is established. The DC power supply and Amplifier must have a common ground in order to operate properly.
- 4.) Power Amplifiers may require additional DC Current when initially powered-up. Depending on the design, the input current draw could range from an additional 10% to 100% above the maximum rated DC current of the Amplifier. This varies based on product part number.
- 5.) Confirm the DC power supply, if limited, is set to allow for additional start-up current that's rated for the Power Amplifier.
- 6.) Confirm the system is designed and calibrated for 50 ohms. Any impedance mismatch may cause performance issues.
- 7.) Perform a CALIBRATION (if required) with the loads before connecting the Amplifier to the Network Analyzer to ensure proper performance.
- 8.) Use a fixed attenuator between the signal source and input port of the Amplifier to optimize the input VSWR match.
- 9.) Confirm the input power level at the input port of the amplifier does not exceed the maximum rated limit for input power (as stated in the Amplifier datasheet).
 P_{in} for Small Signal Gain = P1dB-SSG-10 dB
 P_{in} for P1dB = P1dB-SSG+1 dB
- 10.) Confirm the Network Analyzer is always connected to the Amplifier first before DC power is applied to the Amplifier.
- 11.) As long as the input and output ports of the amplifier are connected to a 50Ohm load and RF signal power is applied, the Amplifier can be powered up with DC voltage.
- 12.) Confirm the Amplifier output load is matched for a 50 Ohm impedance and will not exceed the maximum rated VSWR or Return Loss limit for the Amplifier. Exceeding the maximum rated VSWR or Return Loss limit will result in reflected signal power that could damage the Amplifier and void the warranty.
- 13.) **Power Amplifier connected to an Antenna for signal transmission** - It's strongly recommended to use a high power fixed attenuator pad or an Isolator between the output port of the Amplifier and input port to the antenna. Any reflected signal power due to impedance mismatch will likely damage the Amplifier and void the warranty.
- 14.) The attenuator or isolator used at the output port of the Amplifier must be rated to handle the output power level and operational frequency band of the amplifier.

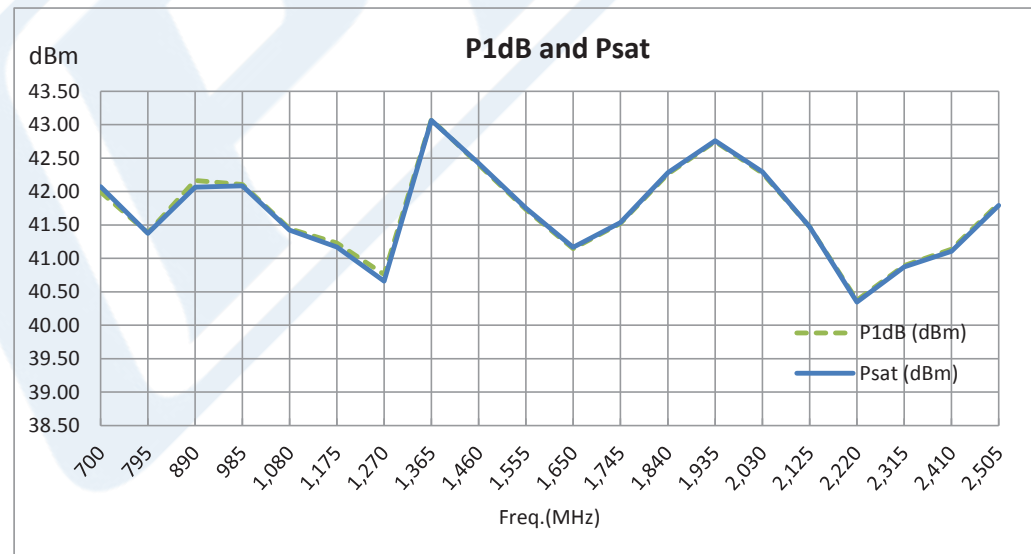
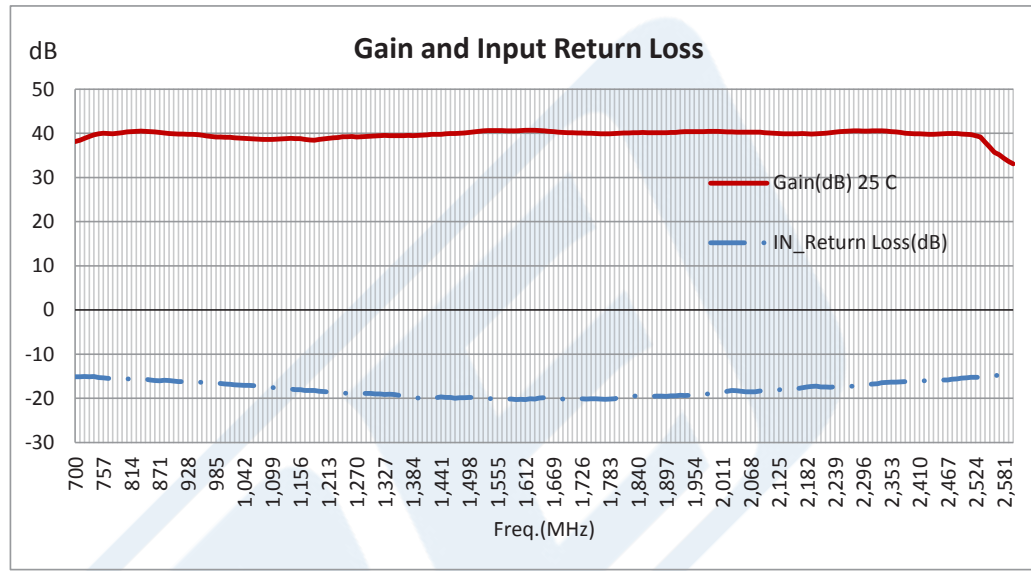
Click the following link (or enter part number in "SEARCH" on website) to obtain additional part information including price, inventory and certifications: [40 dB Gain, 13 Watt P1dB, 800 MHz to 2.5 GHz, High Power Amplifier, SMA, 50 dBm IP3, Class A PE15A5020](#)



40 dB Gain, 13 Watt P1dB, 800 MHz to 2.5 GHz, High Power Amplifier, SMA, 50 dBm IP3, Class A

TECHNICAL DATA SHEET PE15A5020

Typical Performance Data

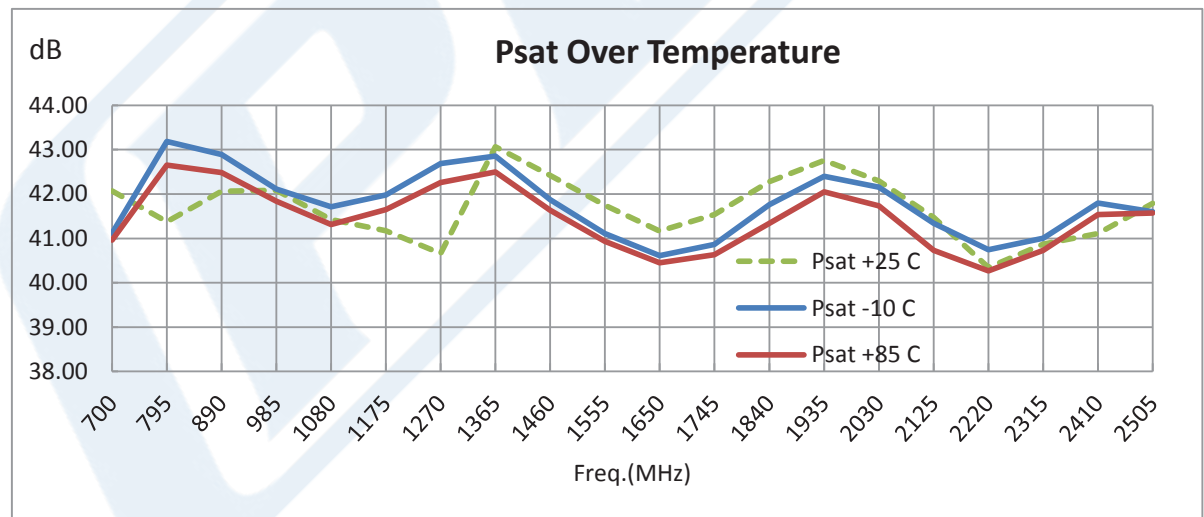
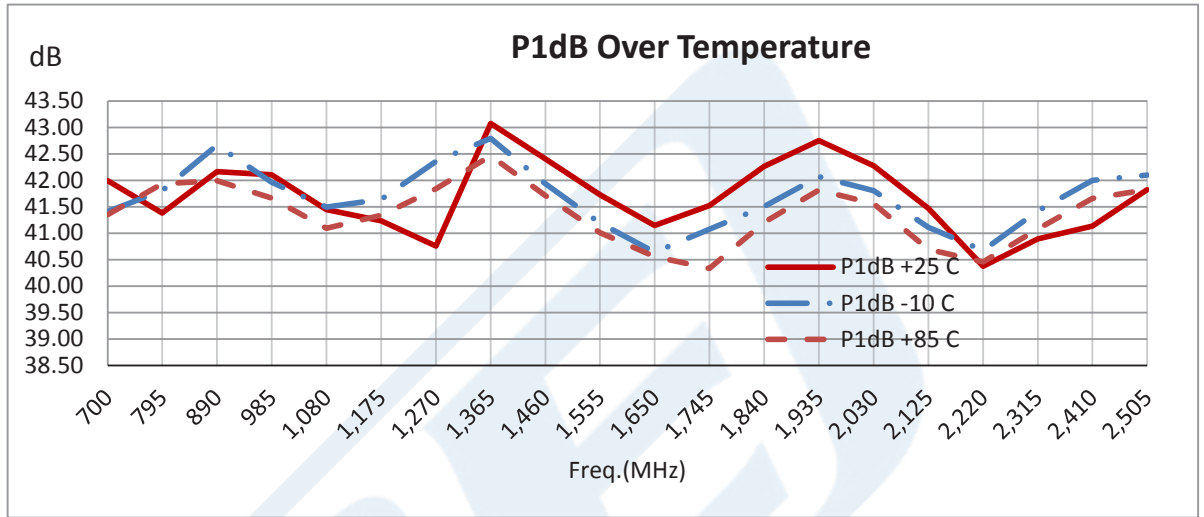


Click the following link (or enter part number in "SEARCH" on website) to obtain additional part information including price, inventory and certifications: [40 dB Gain, 13 Watt P1dB, 800 MHz to 2.5 GHz, High Power Amplifier, SMA, 50 dBm IP3, Class A PE15A5020](#)



40 dB Gain, 13 Watt P1dB, 800 MHz to 2.5 GHz, High Power Amplifier, SMA, 50 dBm IP3, Class A

TECHNICAL DATA SHEET PE15A5020



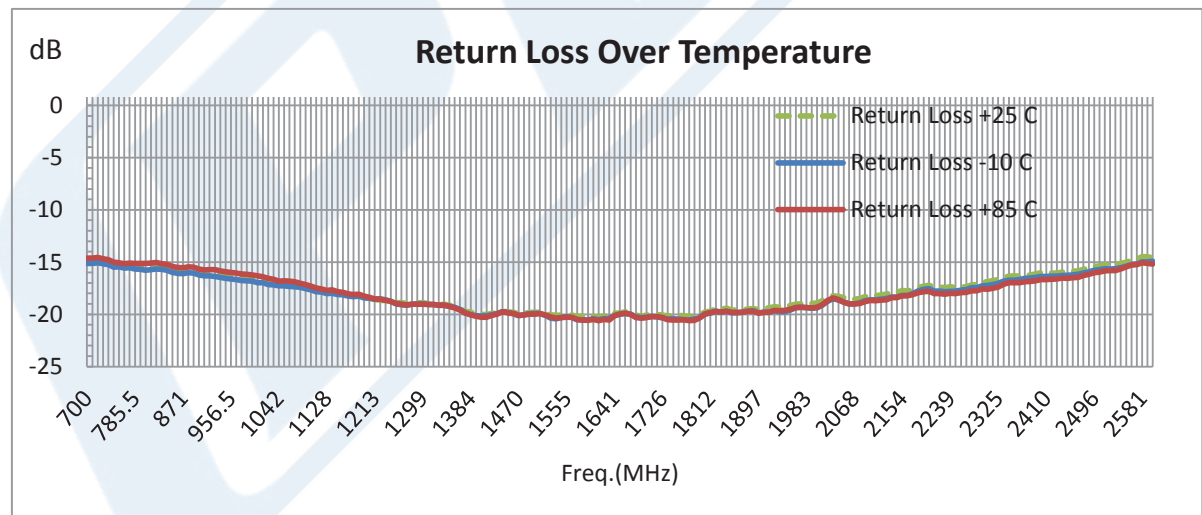
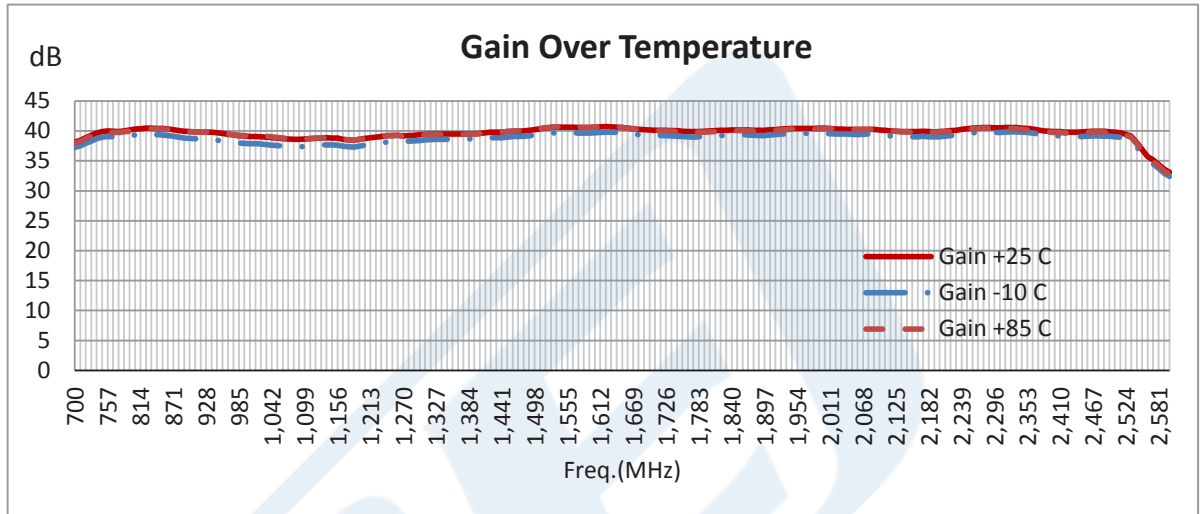
Click the following link (or enter part number in "SEARCH" on website) to obtain additional part information including price, inventory and certifications: [40 dB Gain, 13 Watt P1dB, 800 MHz to 2.5 GHz, High Power Amplifier, SMA, 50 dBm IP3, Class A PE15A5020](#)



40 dB Gain, 13 Watt P1dB, 800 MHz to 2.5 GHz, High Power Amplifier, SMA, 50 dBm IP3, Class A

TECHNICAL DATA SHEET

PE15A5020



Click the following link (or enter part number in "SEARCH" on website) to obtain additional part information including price, inventory and certifications: [40 dB Gain, 13 Watt P1dB, 800 MHz to 2.5 GHz, High Power Amplifier, SMA, 50 dBm IP3, Class A PE15A5020](#)



40 dB Gain, 13 Watt P1dB, 800 MHz to 2.5 GHz, High Power Amplifier, SMA, 50 dBm IP3, Class A

TECHNICAL DATA SHEET

PE15A5020

40 dB Gain, 13 Watt P1dB, 800 MHz to 2.5 GHz, High Power Amplifier, SMA, 50 dBm IP3, Class A from Pasternack Enterprises has same day shipment for domestic and International orders. Our RF, microwave and millimeter wave products maintain a 99.4% availability and are part of the broadest selection in the industry.

Click the following link (or enter part number in "SEARCH" on website) to obtain additional part information including price, inventory and certifications: [40 dB Gain, 13 Watt P1dB, 800 MHz to 2.5 GHz, High Power Amplifier, SMA, 50 dBm IP3, Class A PE15A5020](https://www.pasternack.com/40-db-gain-2.5-ghz-high-power-high-gain-amplifier-ip3-sma-pe15a5020-p.aspx)

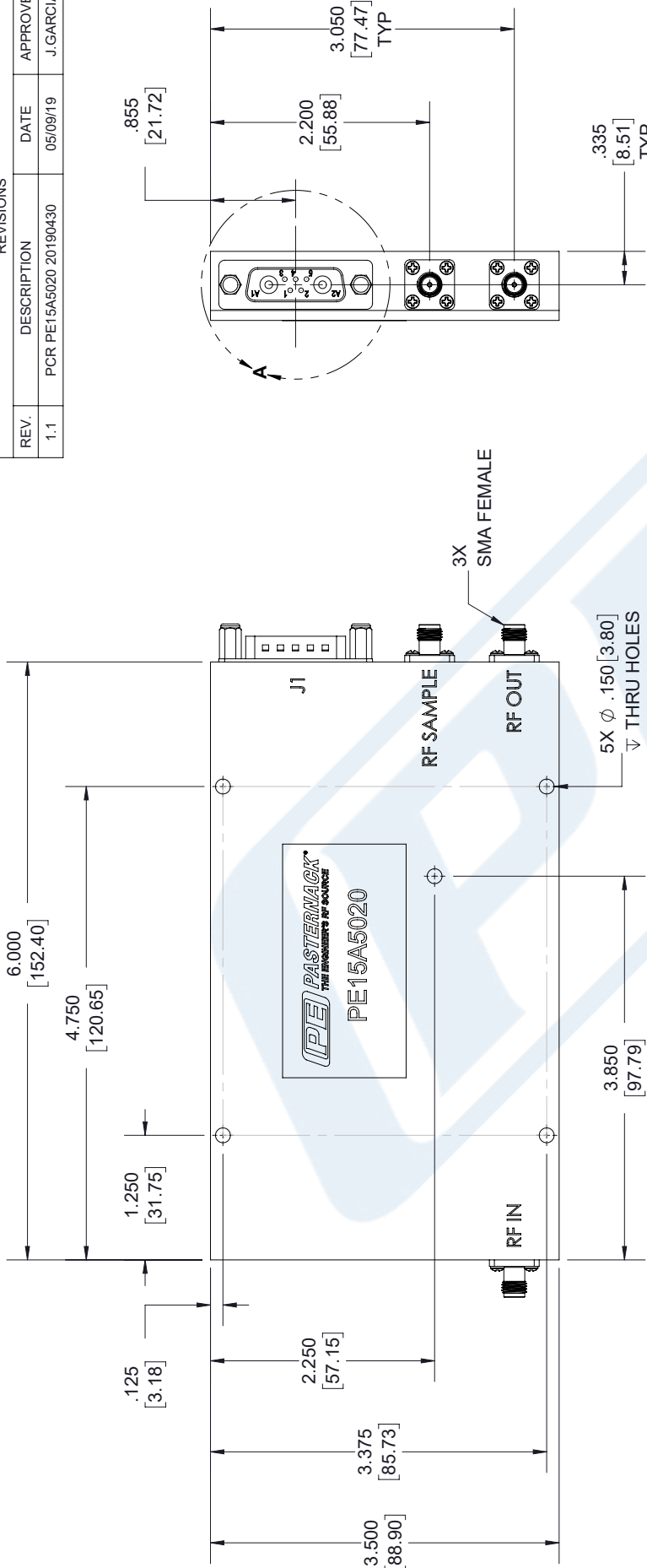
URL: <https://www.pasternack.com/40-db-gain-2.5-ghz-high-power-high-gain-amplifier-ip3-sma-pe15a5020-p.aspx>

The information contained in this document is accurate to the best of our knowledge and representative of the part described herein. It may be necessary to make modifications to the part and/or the documentation of the part, in order to implement improvements. Pasternack reserves the right to make such changes as required. Unless otherwise stated, all specifications are nominal. Pasternack does not make any representation or warranty regarding the suitability of the part described herein for any particular purpose, and Pasternack does not assume any liability arising out of the use of any part or documentation.

PE15A5020 CAD Drawing

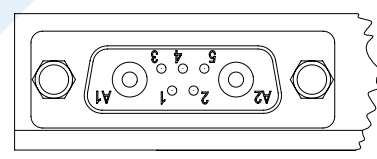
40 dB Gain, 13 Watt P1dB, 800 MHz to 2.5 GHz, High Power Amplifier, SMA, 50 dBm IP3, Class A

REVISIONS			
REV.	DESCRIPTION	DATE	APPROVED
1.1	PCR PE15A5020 20190430	05/09/19	J.GARCIA



7W2 DC Connections	
Pin	Description
A1	Ground
A2	+VDC
1	Temperature Sensor
2	Amplifier Enable
3	No Connection
4	Ground
5	Forward Power Detection

Pin	Specification
A1	VDC Ground
A2	+12 VDC ±0.5V **
1	.75V at +25°C, 1V at +50°C, 1.25V at +75°C (±0.05V)
2	Enable: +5V TTL HIGH, Disable: 0V TTL LOW (+5.5V Max.)
3	N/A
4	VDC Ground
5	N/A



UNLESS OTHERWISE SPECIFIED LEADING DIMENSIONS ARE INCHES DIMENSIONS IN [] ARE MILLIMETERS

TOLERANCES:
 X±.2 [5.08] FRACTIONS
 .XX±.01 [.25] ±132
 .XXX±.005 [.13] ANGLES ± 1°
 ALL DIMENSIONS SHOWN ARE FOR REFERENCE ONLY.
 THIRD-ANGLE PROJECTION

THE INFORMATION AND DESIGN IN THIS DOCUMENT IS THE PROPERTY OF PASTERNAK CORPORATION. ALL RIGHTS RESERVED.

PE PASTERNAK
 an INFINITO brand
 Pasternack Enterprises, Inc.
 P.O. Box 16759, Irvine, CA 92623.
 Phone: 1.949.261.1920 | 1.866.727.8376
 Fax: 1.949.261.7451
 www.pasternack.com | e-mail: sales@pasternack.com

SHEET 1 OF 1
 SCALE N/A

SIZE [CAGE] DRAWN BY PART NUMBER REV
 A 53919 K.DANG PE15A5020 1.1

Notes: Heatsink required for proper operation. Unit is cooled by conducting to heatsink.
 ** Specified operation at +12V. However, unit can be run from +10V to +14V.

THESE COMMODITIES, TECHNOLOGY OR SOFTWARE WERE EXPORTED FROM THE UNITED STATES IN ACCORDANCE WITH THE EXPORT ADMINISTRATION REGULATIONS. DIVERSION CONTRARY TO U.S. LAW PROHIBITED.