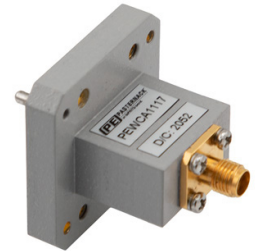


WRD-650 UG Square Cover Flange to SMA
Female Waveguide to Coax Adapter Operating
from 6.5 GHz to 18 GHz in Copper Alloy



PEWCA1117

Features

- 6.5 GHz to 18 GHz Frequency Range
- WRD-650 Double Ridge Waveguide Interface
- UG Square Cover Flange
- SMA Female RF Interface
- Comprehensive waveguide offering also include E-Bends, H-Bends, Sections, Filters, Terminations, Couplers, and more.

Applications

- Test Benches
- Radar
- Satellite
- Microwave Radio Systems
- Military and Space
- Communication Systems

Description

The PEWCA1117 is an end launch double ridge waveguide to coaxial adapter operating at a frequency range of 6.5 GHz to 18 GHz. This adapter offers a WRD-650 waveguide interface size coupled with a precision tolerance Square Cover flange. The PEWCA1117 is constructed of copper alloy and painted gray to ensure durability. The coaxial connector offered by this adapter uses an SMA Female connector.

Configuration

Waveguide Size	WRD-650
Flange	UG Square Cover
RF Connector	SMA Female
Impedance	50 Ohms
Body Geometry	End Launch

Electrical Specifications

Description	Minimum	Typical	Maximum	Units
Frequency Range	6.5		18	GHz
VSWR		1.5:1		
Insertion Loss			0.5	dB
Input Power (CW)			50	Watts

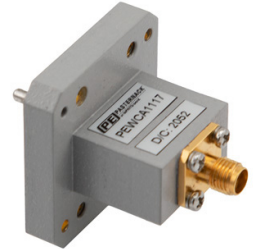
Mechanical Specifications

Size	
Length	1.36 in [36.54 mm]
Width	0.91 in [23.11 mm]
Height	1.378 in [35 mm]
Weight	0.5 lbs [226.8 g]

RF Connector	
Connector Type	SMA Female

Waveguide Interface	
Waveguide Type	WRD-650
Flange Type	Square Cover
Flange Designation	UG
Body Material and Plating	Copper Alloy

WRD-650 UG Square Cover Flange to SMA
Female Waveguide to Coax Adapter Operating
from 6.5 GHz to 18 GHz in Copper Alloy



PEWCA1117

Environmental Specifications

Temperature

Compliance Certifications (see [product page](#) for current document)

Plotted and Other Data

Notes:

- Values at +25 °C, sea level unless stated otherwise

Typical Performance Data

WRD-650 UG Square Cover Flange to SMA Female Waveguide to Coax Adapter Operating from 6.5 GHz to 18 GHz in Copper Alloy from Pasternack Enterprises has same day shipment for domestic and International orders. Our RF, microwave and millimeter wave products maintain a 99.4% availability and are part of the broadest selection in the industry.

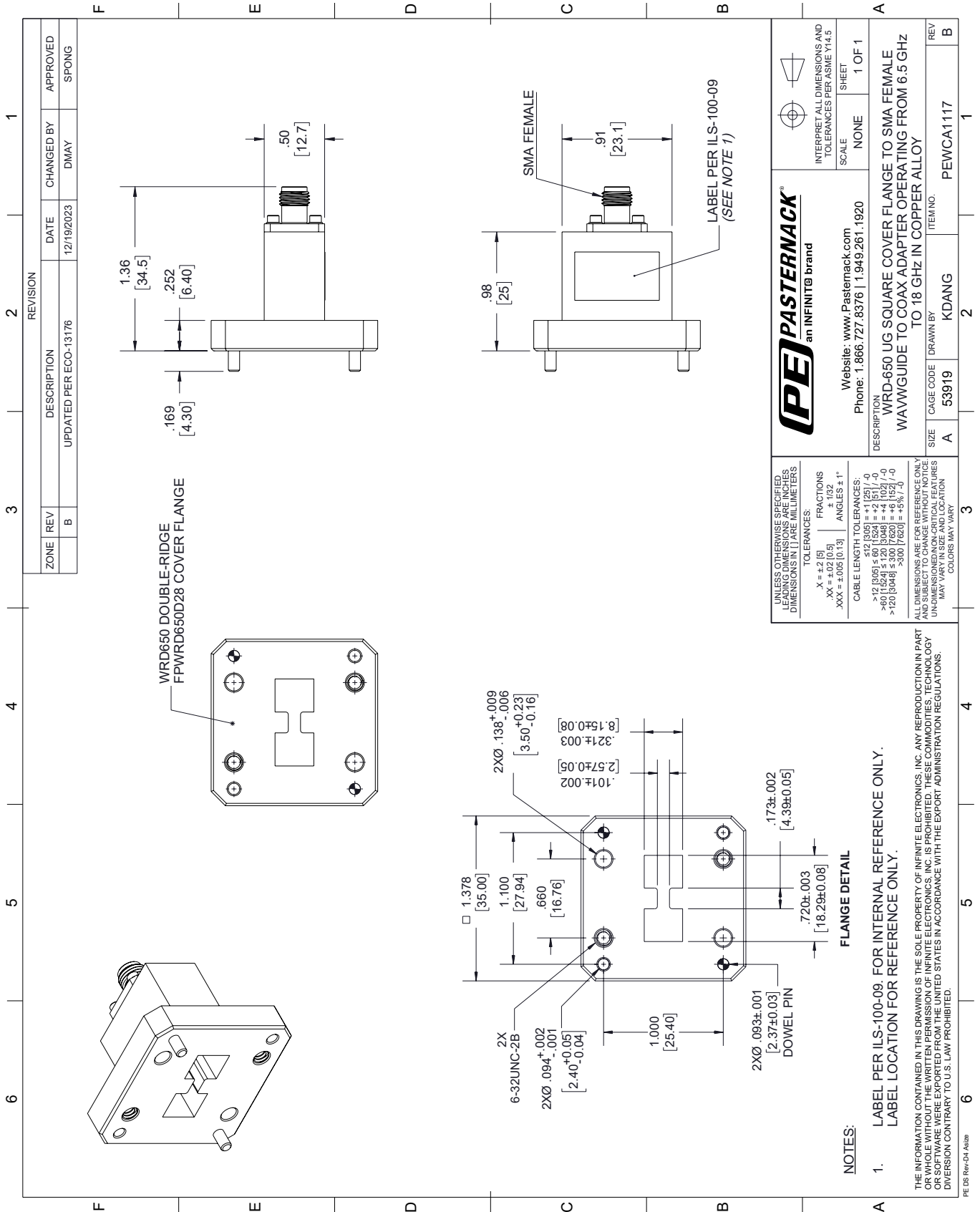
Click the following link (or enter part number in "SEARCH" on website) to obtain additional part information including price, inventory and certifications: [WRD-650 UG Square Cover Flange to SMA Female Waveguide to Coax Adapter Operating from 6.5 GHz to 18 GHz in Copper Alloy PEWCA1117](#)

URL: <https://www.pasternack.com/wrd650-ug-square-flange-to-end-launch-sma-female-waveguide-coax-adapter-pewca1117-p.aspx>

The information contained within this document is accurate to the best of our knowledge and representative of the part described herein. It may be necessary to make modifications to the part and/or the documentation of the part in order to implement improvements. Pasternack Enterprises reserves the right to make such changes as required. Unless otherwise stated, all specifications are nominal. Pasternack Enterprises does not make any representation or warranty regarding the suitability of the part described herein for any particular purpose, and Pasternack Enterprises does not assume liability arising out of the use of any part or document.

PEWCA1117 CAD Drawing

WRD-650 UG Square Cover Flange to SMA Female Waveguide to Coax Adapter Operating from 6.5 GHz to 18 GHz in Copper Alloy



ZONE	REV	DESCRIPTION	DATE	CHANGED BY	APPROVED
	B	UPDATED PER ECO-13176	12/19/2023	DMAY	SPONG

PE PASTERNAK
an INFINITI® brand

Website: www.Pasternack.com
Phone: 1.866.727.8376 | 1.949.261.1920

DESCRIPTION: WRD-650 UG SQUARE COVER FLANGE TO SMA FEMALE WAVEGUIDE TO COAX ADAPTER OPERATING FROM 6.5 GHz TO 18 GHz IN COPPER ALLOY

SCALE: NONE
SHEET: 1 OF 1

INTERPRET ALL DIMENSIONS AND TOLERANCES PER ASME Y14.5

ITEM NO. PEWCA1117

CAGE CODE: 53919
DRAWN BY: KDANG

SIZE: A

REVISION: B

UNLESS OTHERWISE SPECIFIED, DIMENSIONS ARE IN INCHES. DIMENSIONS IN PARENTHESES ARE IN MILLIMETERS.

TOLERANCES:
X = ±.2 (5)
XX = ±.02 (0.5)
XXX = ±.005 (0.13)

FRACTIONS:
±.1 (2)
±.002 (0.05)

ANGLES: ±1°

CABLE LENGTH TOLERANCES:
100' ±.005 (0.13)
>12 (305) ±.01 (0.25)
>60 (1524) ±.02 (0.50)
>20 (508) ±.03 (0.762)

ALL DIMENSIONS ARE FOR REFERENCE ONLY. DIMENSIONS ON CRITICAL FEATURES MAY VARY IN SIZE AND LOCATION. COLORS MAY VARY.

NOTES:

1. LABEL PER ILS-100-09. FOR INTERNAL REFERENCE ONLY. LABEL LOCATION FOR REFERENCE ONLY.

THE INFORMATION CONTAINED IN THIS DRAWING IS THE SOLE PROPERTY OF INFINITE ELECTRONICS, INC. ANY REPRODUCTION IN PART OR WHOLE WITHOUT THE WRITTEN PERMISSION OF INFINITE ELECTRONICS, INC. IS PROHIBITED. THESE COMMODITIES, TECHNOLOGY OR SOFTWARE WERE EXPORTED FROM THE UNITED STATES IN ACCORDANCE WITH THE EXPORT ADMINISTRATION REGULATIONS. DIVERSION CONTRARY TO U.S. LAW PROHIBITED.

PE DS Rev-D4 As28